

INDEX OF SHEETS

SHEET NO. 1	TITLE PAGE
" 2	TYPICAL CROSS-SECTION OF IMPROVEMENT
" 3	BANKING AND WIDENING TABLES
4-5	PLAN AND PROFILE STA.
6	STD. STRUCTURE SHEET 5-28, PIPE CULVERTS
7	" " 5-30, GUARD RAIL
8	" " 5-30A, FED. AID, BOUNDARY MKRS.
9	" " 5-40, BARRICADES, SIGNS, & LIGHTS
10	" " 5-41, ROUNDING TOPS OF SLOPES
11-18	CROSS SECTION SHEETS.

STANDARD STRUCTURE SHEETS
 APPROVED BY THE CHIEF ENGINEER:
 5-28, July 11, 1933
 5-30, Aug. 15, 1934

STATE OF VERMONT
 STATE HIGHWAY DEPARTMENT

PLAN AND PROFILE OF PROPOSED
 STATE HIGHWAY

FEDERAL AID PROJECT

TOWN OF JOHNSON *Pin# 00R296*

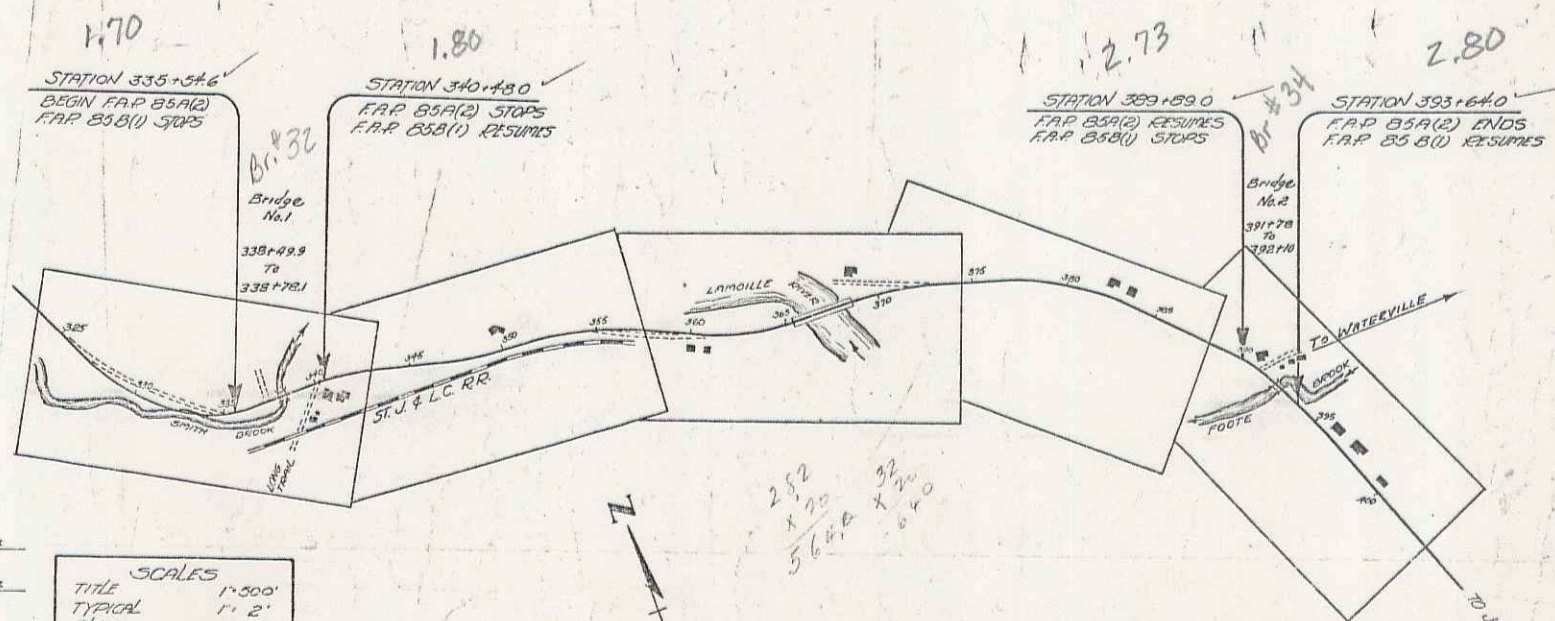
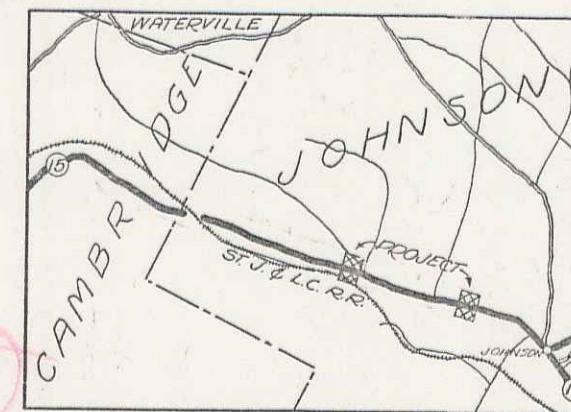
JEFFERSONVILLE-JOHNSON ROAD

BEGINNING AT A POINT 1.77 MILES SOUTHEASTERLY OF THE CAMBRIDGE
 JOHNSON TOWN LINE AND EXTENDING 1.10 MILES, EXCLUDING 0.874 MILES
 OF F.A.P. 85B(1)

LENGTH OF PROJECT 875 FT. = 0.165 MILES.

ROADWAY	814.8 FT.	=	0.154 MILES
BRIDGE NO. 1	28.2 FT.	=	0.005 MILES
BRIDGE NO. 2	32.0 FT.	=	0.006 MILES

FED. ROAD DIST. NO.	STATE	FED. AID PROJ. NO.	FISCAL YEAR	SHEET NO.	TOTAL SHEETS
9	Vt.	85A(2)	1946	1	18



RIGHT-OF-WAY DIVISION
 TOWN FILE
 PERPETUAL
 Town of Johnson
 (To Be Returned To R.O.W. Division)

APPROVED: Sep 25 1939
H. Sargent
 COMMISSIONER OF HIGHWAYS
 SUBMITTED BY ORDER OF THE STATE HIGHWAY BOARD

Project No. F.A.P. 85-A(2)

CONVENTIONAL SIGNS

- COUNTY LINE
- TOWN LINE
- FENCE LINE
- STONE WALL
- UNFENCED PROPERTY
- GUARD RAIL
- TRAVELED WAY
- RAILROAD
- RETAINING WALL
- CENTER LINE
- SURVEY LINE
- CULVERT
- DROP INLET
- TROLLEY POLE
- POWER POLE
- TELEPHONE POLE
- TREES
- HEGGE

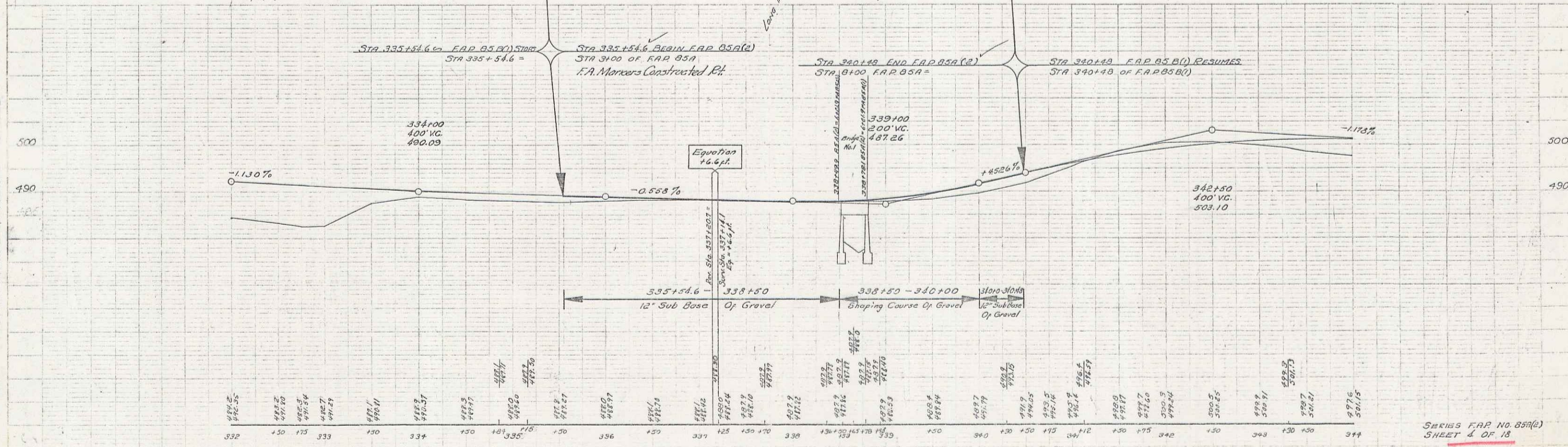
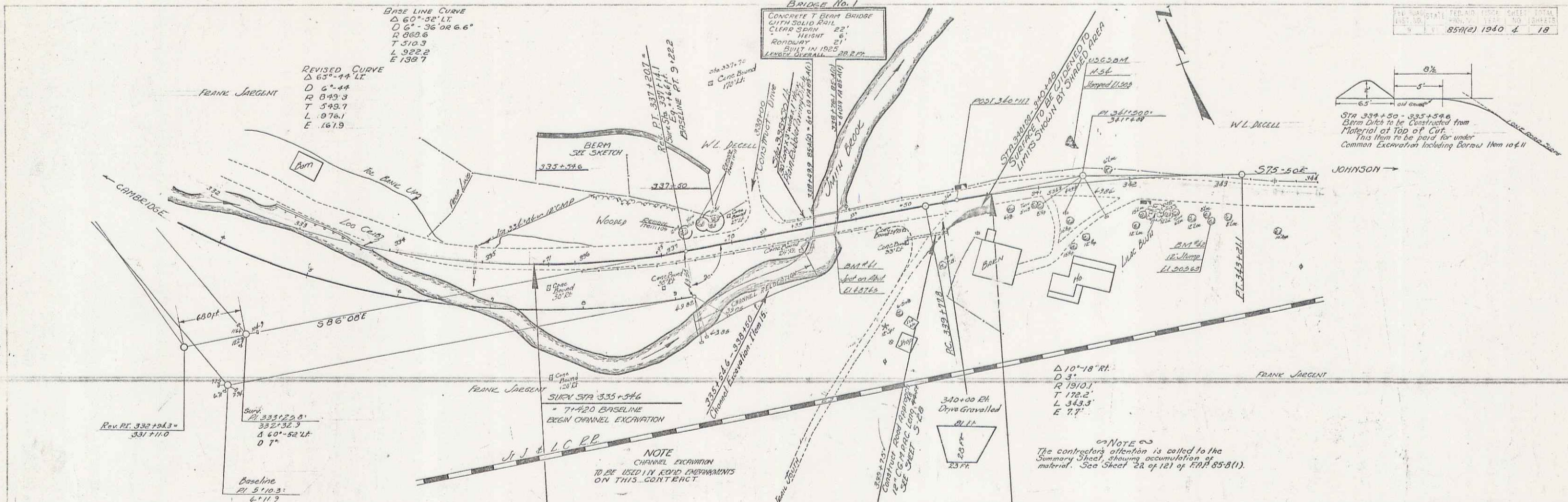
- GROUND ELEVATION
- GRADE ELEVATION
- CURVE DATA
- DEFLECTION ANGLE
- DEGREE OF CURVE
- RADIUS OF CURVE
- TANGENT DISTANCE
- LENGTH OF CURVE
- EXTERNAL DISTANCE
- POINT OF INTERSECTION
- POINT OF CURVE
- POINT OF TANGENT
- POINT ON TANGENT

SCALES
 TITLE 1"=500'
 TYPICAL 1"=20'
 PLAN 1"=30'
 PROFILE 1"=10'
 CROSS SECTIONS 1"=3'

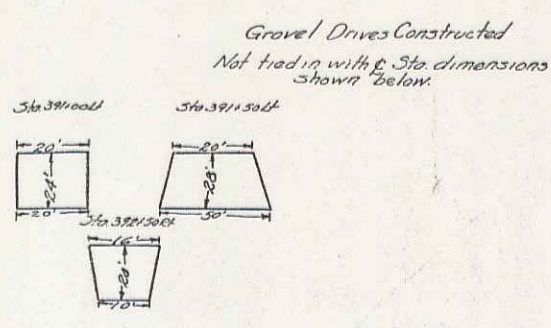
These plans are subject to such revisions as may be required by the Public Roads Administration or the Commissioner of Highways. Construction is to be carried on in accordance with the plans and Standard Road and Bridge Specifications of 1936 as approved December 23, 1936 by the Public Roads Administration including all subsequent approved revisions and such revised specifications and special provisions as are submitted with the plans.

APPROVED: <u>Sep 25 1939</u> DISTRICT ENGINEER	APPROVED: <u>Sep 25 1939</u> DISTRICT HIGHWAY COMMISSIONER	SERIES F.A.P. NO. 85A(2) FILED SHEET 1 OF 18
---	---	---

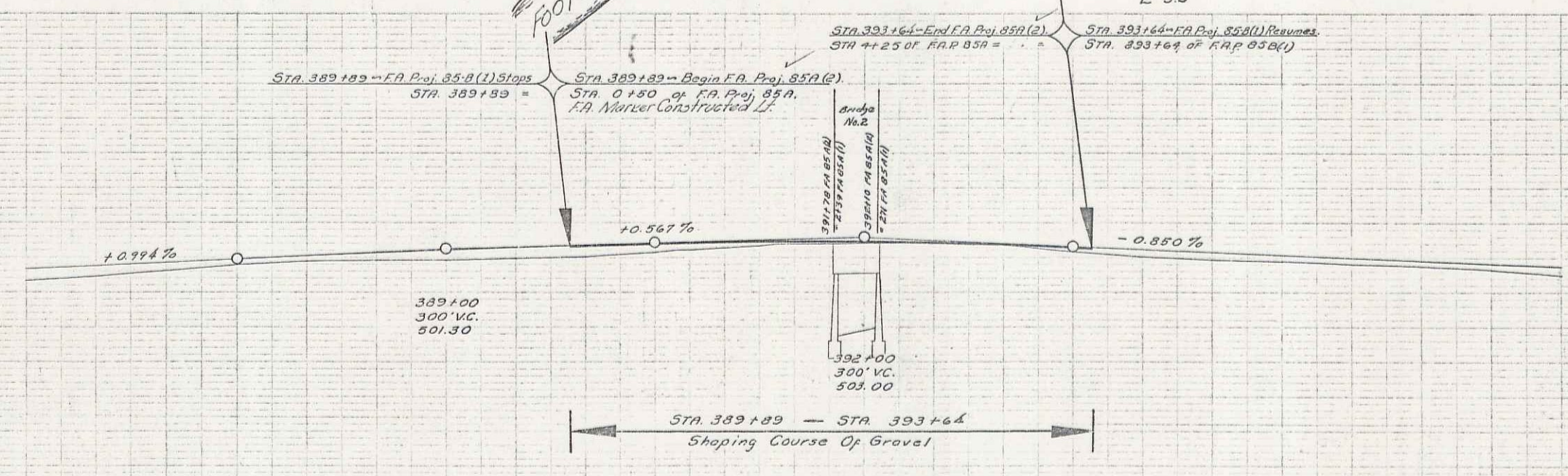
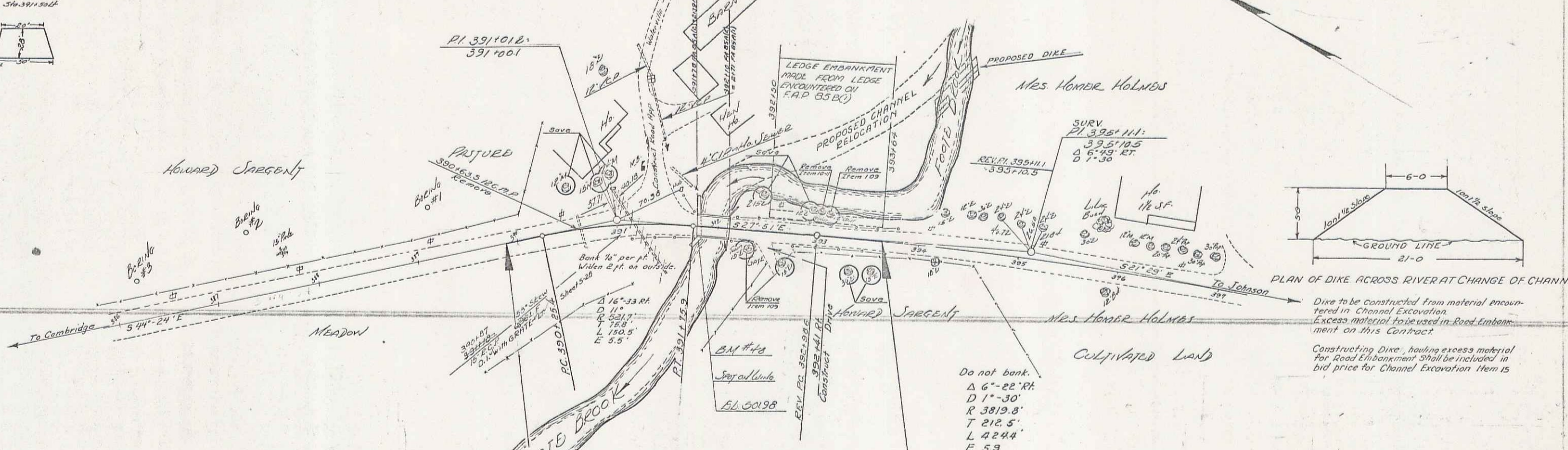
DIST # 8 PLANS 1



2



Bridge No. 1
 CONC. T BEAM BRIDGE
 Clear Span 28 FT
 Height 10 FT
 Roadway 20 FT
 Built in 1928
 Length 134.58



386	150	387	150	388	150	389	150	390	150	391	150	392	150	393	150	394	150	395	150	396	150	397
491.52	491.52	491.52	491.52	491.52	491.52	491.52	491.52	491.52	491.52	491.52	491.52	491.52	491.52	491.52	491.52	491.52	491.52	491.52	491.52	491.52	491.52	491.52

BM #40 Spig on Wink Sta 391.00 Elev. 501.30