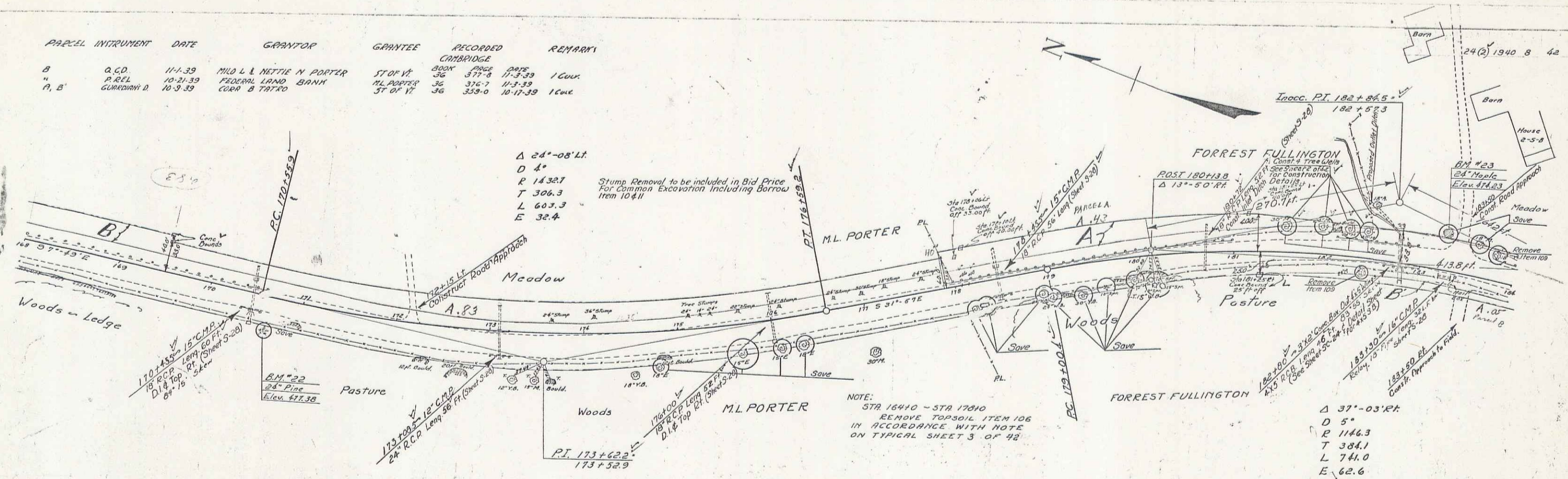


PARCEL	INSTRUMENT	DATE	GRANTOR	GRANTEE	RECORDED	REMARKS
B	A.C.D.	11-1-39	MILD L & NETTIE N PORTER	ST OF VT	36	377.8 11-3-39 1 Cont.
A	P.R.L.	10-21-39	FEDERAL LAND BANK	ML PORTER	36	376.7 11-3-39 1 Cont.
A, B	GLUCKWANI D	10-3-39	COAH & TRAFFO	ST OF VT	36	359.0 10-17-39 1 Cont.

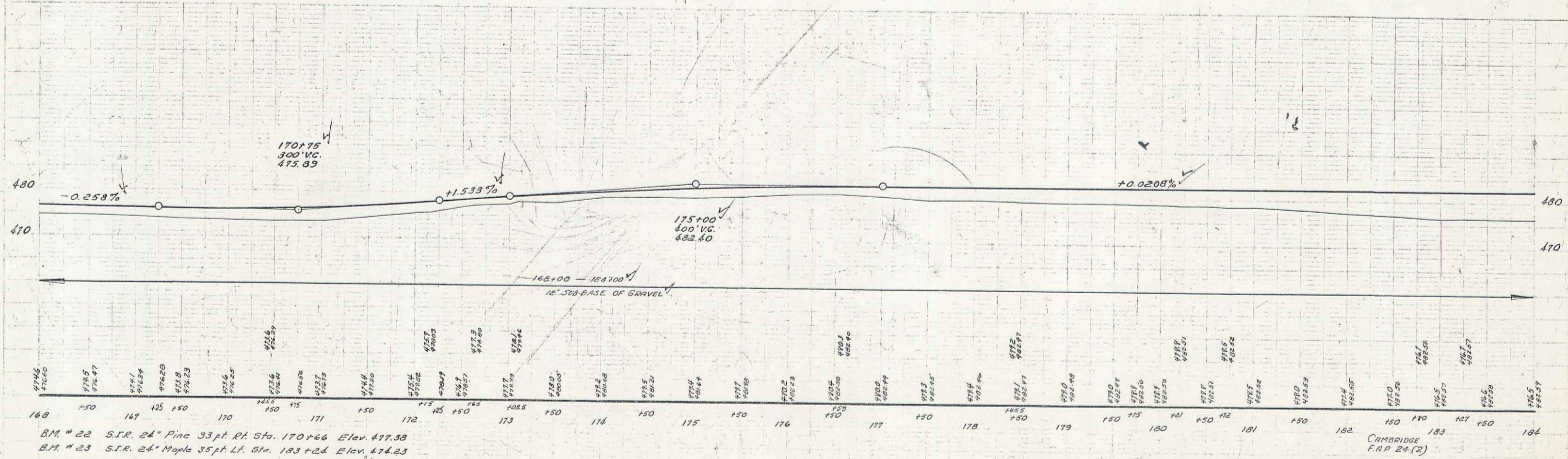


Δ 24°-08' LT.
 D 4°
 R 1432.7
 T 306.3
 L 603.3
 E 32.4

Stump Removal to be included in Bid Price For Common Excavation Including Borrow Item 10.4.11

NOTE:
 STA 16410 - STA 17810
 REMOVE TOPSOIL ITEM 106
 IN ACCORDANCE WITH NOTE
 ON TYPICAL SHEET 3 OF 48

Δ 37°-03' RT.
 D 5°
 R 1146.3
 T 384.1
 L 741.0
 E 62.6



B.M. # 22 S.I.R. 24" Pine 33 pt. Rt. Sta. 170+66 Elev. 477.38
 B.M. # 23 S.I.R. 24" Maple 35 pt. Lt. Sta. 183+24 Elev. 474.23

CAMBRIDGE
 F.A.P. 24(2)
 Sheet 8 of 42 Sheets