

INDEX OF SHEETS

| SHEET NO. | TITLE PAGE | ITEM | DESCRIPTION |
|-----------|--------------------------------------|---------|--|
| 2-3 | TYPICAL CROSS-SECTION OF IMPROVEMENT | 2A | CRUSHED GRAVEL MIXED IN PLACE SURFACE COURSE |
| 4 | BANKING AND WIDENING TABLES | 25 | WITH REFINED TAR ITEM 30 |
| 5-9 | PLAN AND PROFILE SHEETS | | |
| 10 | STANDARD STRUCTURE SHEET | S 28 | PIPE CULVERTS |
| 11 | " | S 30 | GUARD RAIL |
| 12 | " | S 30A | STD. UNDERDRAIN |
| 13 | " | S 31 | BOUNDARY MARKERS |
| 14 | " | S 40 | BARRICADES, SIGNS & LIGHTS |
| 15 | " | S 41 | ROUNDING OF SLOPES |
| 16 | " | SC 2' | BOX CULVERT |
| 17 | " | SCW 2.3 | WINGS FOR BOX CULVERT |
| 18 | DETAIL SHEET FOR | 4 X 5 | R.C. BOX |
| 19-42 | CROSS SECTION SHEETS. | | |

STANDARD STRUCTURE SHEETS APPROVED BY THE CHIEF ENGINEER:

528, JULY 11, 1933
 530, AUG. 15, 1934
 531, JULY 25, 1934

STATE OF VERMONT
 STATE HIGHWAY DEPARTMENT

PLAN AND PROFILE OF PROPOSED
 STATE HIGHWAY

FEDERAL AID PROJECT

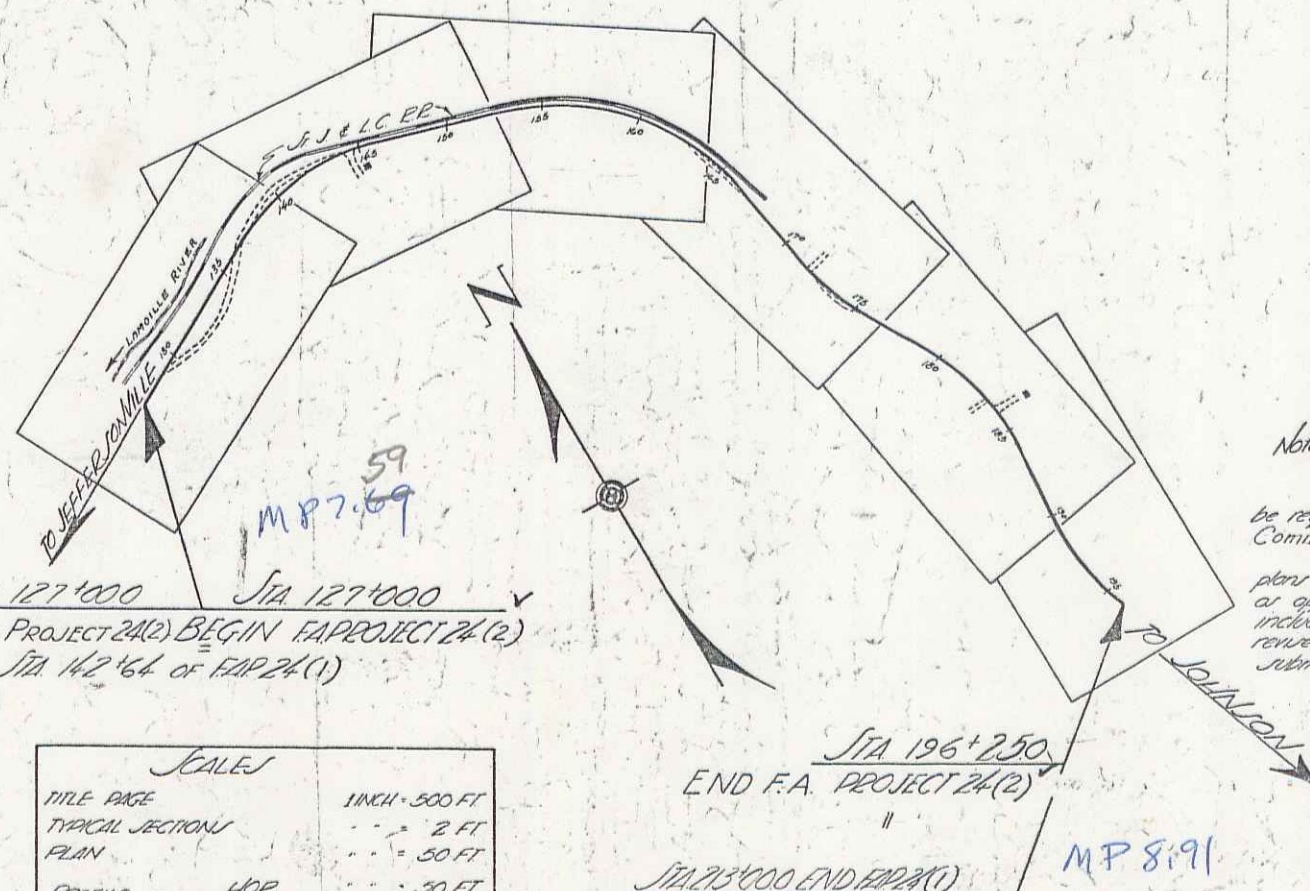
TOWN OF CAMBRIDGE Pin # 60R294

JEFFERSONVILLE-JOHNSON ROAD
 BEGINNING AT A POINT 2.46 MILES EASTERLY OF THE
 JUNCTION OF ROUTES 108 & 15 & EXTENDING NORTH-
 EASTERLY 1.311 MILES.

LENGTH OF PROJECT 6925.0 FEET = 1.311 MILES.

RECORD PLANS

BY A. C. BIRNIE 5-9-41



CONVENTIONAL SIGNS

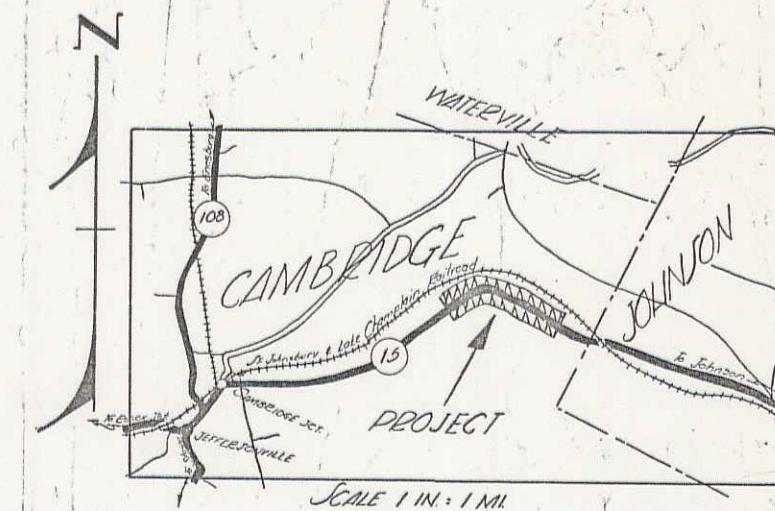
- COUNTY LINE
- TOWN LINE
- FENCE LINE
- STONE WALL
- UNFENCED PROPERTY
- GUARD RAIL
- TRAVELED WAY
- RAILROAD
- RETAINING WALL
- CENTER LINE
- SURVEY LINE
- CULVERT
- DROP INLET
- TROLLEY POLE
- POWER POLE
- TELEPHONE POLE
- TREES
- HEDGE

- CAMBRIDGE F.A.P. 24(2)
 RECORD PLANS
 CONSTR. CORR.
 FISCAL YEAR 1940
- CURVE DATA
- DEFLECTION ANGLE..... Δ
 - RADIUS OF CURVE..... R
 - TANGENT DISTANCE..... T
 - LENGTH OF CURVE..... L
 - EXTERNAL DISTANCE..... E
 - POINT OF INTERSECTION..... P. I.
 - POINT OF CURVE..... P. C.
 - POINT OF TANGENT..... P. T.
 - POINT ON TANGENT..... P. O. T.

SCALES

| | |
|------------------|-----------------|
| TITLE PAGE | 1 INCH = 500 FT |
| TYPICAL SECTIONS | " " 2 FT |
| PLAN | " " 50 FT |
| PROFILE | " " 30 FT |
| VERT. | " " 10 FT |
| CROSS SECTIONS | " " 5 FT |

| FED. ROAD DIST. NO. | STATE | FED. AID PROJ. NO. | FISCAL YEAR | SHEET NO. | TOTAL SHEETS |
|---------------------|-------|--------------------|-------------|-----------|--------------|
| 9 | Vt. | 24(2) | 1940 | 1 | 42 |



RIGHT-OF-WAY DIVISION
 TOWN FILE

PERPETUAL

Date
 Town of VT 15

(To Be Returned To R.O.W. Division)

NOTE: ANY REVISIONS MUST BE APPROVED BY THE DISTRICT ENGINEER AND THE PUBLIC ROADS ADMINISTRATION BEFORE THE FIELD STAFF OR THE LOCAL AGENCIES FILE.

APPROVED: *H. E. Sargent*
 COMMISSIONER OF HIGHWAYS

SUBMITTED BY ORDER OF THE STATE HIGHWAY BOARD

Note:

These plans are subject to such revisions as may be required by the Public Roads Administration or the Commissioner of Highways. Construction is to be carried on in accordance with the plans and Standard Road and Bridge Specifications of 1936 as approved Dec 29, 1936 by the Public Roads Administration including all subsequent approved revisions and such revised specifications and special provisions as are recommended for approval and submitted with the plans.

DISTRICT ENGINEER
 PUBLIC ROADS ADMINISTRATION
 FEDERAL ROAD AGENCY

APPROVED
 DISTRICT ENGINEER
 PUBLIC ROADS ADMINISTRATION
 FEDERAL ROAD AGENCY

Project No. F.A.P. 24(2)

APPROVED: *12-26-1939* APPROVED: *12-26-1939*
 SERIES F.A.P. No. 24(2) FILED
 SHEET 1 OF 42