

GUARD RAIL REQUIRED ON LEFT

Sta. 200+52	to Sta. 201+48	Length 96'
Sta. 205+13	to Sta. 205+37	" 24'
Sta. 207+57	to Sta. 207+83	" 26'
Sta. 208+50	to Sta. 212+50	" 400'

ON RIGHT

Sta. 205+13	to Sta. 205+37	" 24'
Sta. 207+57	to Sta. 207+83	" 26'
Sta. 212+20	to Sta. 212+44	" 24'

Total This Sheet 616'

STONE BASE REQUIRED

Sta. 200+00 to Sta. 207+65 Length 765'

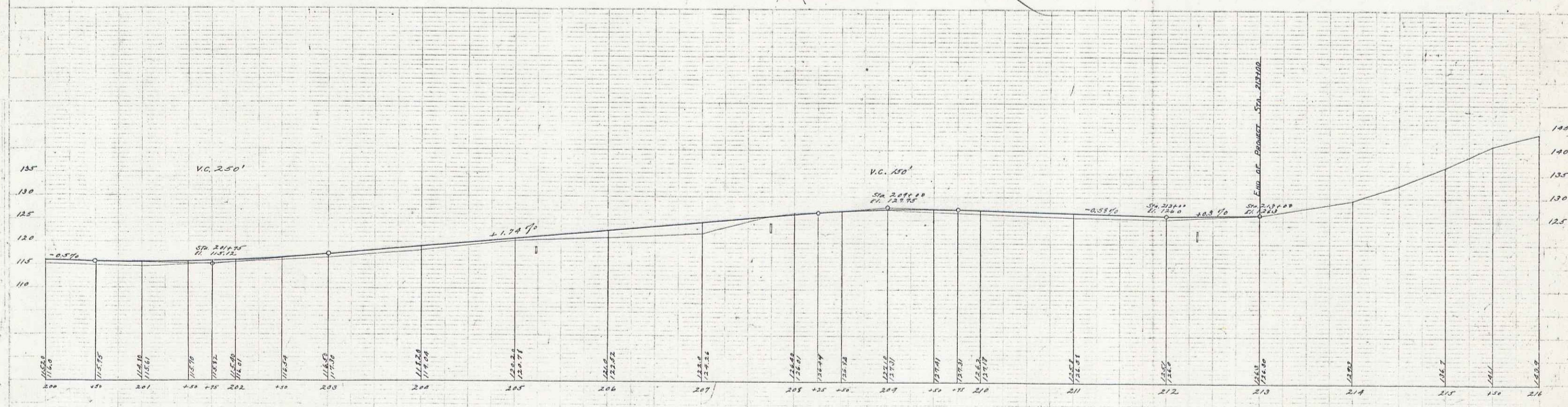
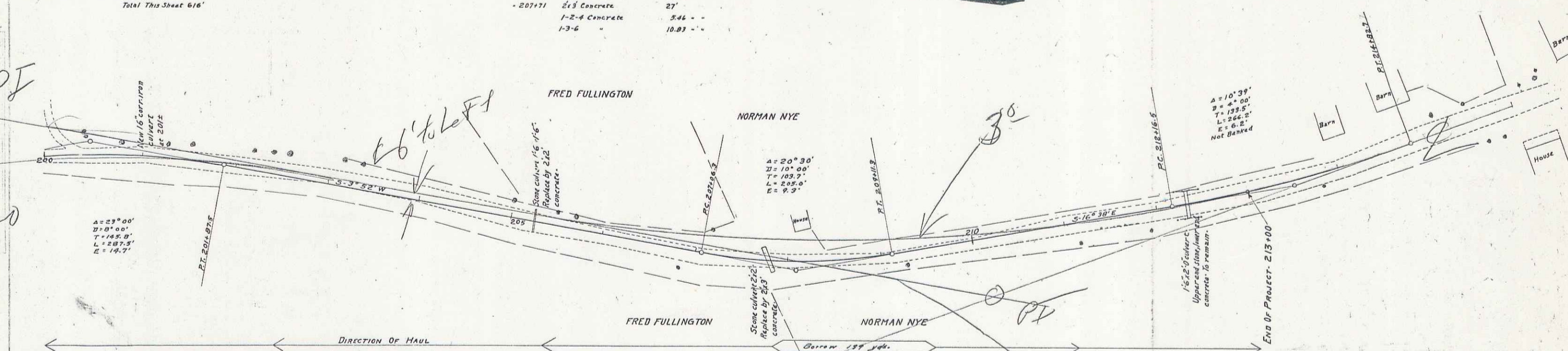
NEW CULVERTS REQUIRED

Sta. 201+00	16" Carr. Iron With D.I.	22'
	1-2-4 Concrete	10 Cu Yds.
	1-3-6 "	2.5 "

CULVERT REPAIRS REQUIRED

Sta. 205+23	24" Concrete	26'
	1-2-4 Concrete	527 Cu Yds.
	1-3-6 "	7.59 "
	2-3 Concrete	27 "
- 207+71	1-2-4 Concrete	5.44 "
	1-3-6 "	10.83 "

FOR ROAD DIST. STA.	FOR A.D. YEAR	FOR FISCAL YEAR	TOTAL SHEETS
9	VE	24	16 37



B.M. On Rock S. of Sta. 200+06 Elev. 118.52
 B.M. Set. Cur. Board No. W. Cor. Horse Barn on Nye Farm Elev. 145.92

Series P-16 24 Piped
 50207 16 vt 38