

**GUARD RAIL REQUIRED**

**ON LEFT**

Sta. 185+00 to Sta. 187+00	Length 200'
Sta. 189+54 to Sta. 189+78	24'
Sta. 199+92 to Sta. 197+00	200'
Sta. 199+28 to Sta. 199+52	24'

**ON RIGHT**

Sta. 186+78 to Sta. 187+00	22'
Sta. 189+34 to Sta. 189+78	24'
Sta. 194+93 to Sta. 195+17	24'
Sta. 199+28 to Sta. 199+52	24'

Total This Sheet 556'

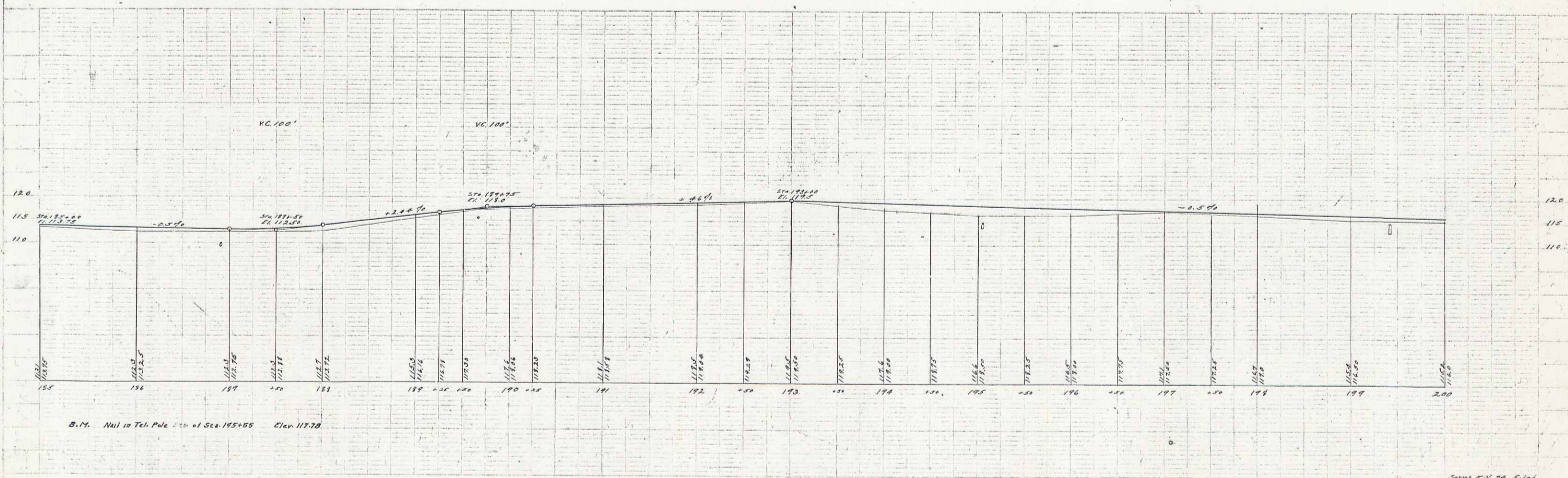
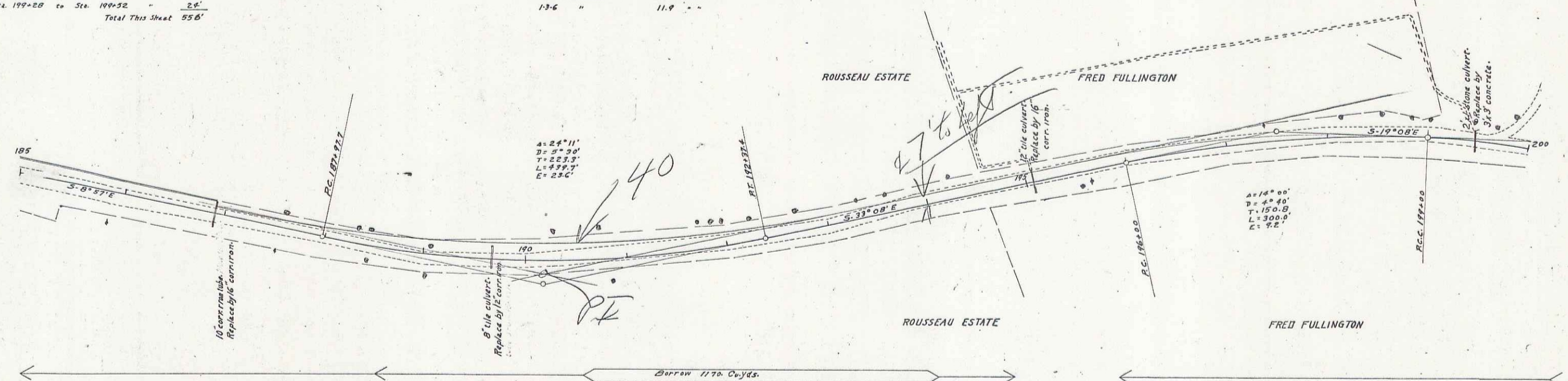
**STONE BASE REQUIRED**

Sta. 198+00 to Sta. 200+00	Length 200'
----------------------------	-------------

**GULVERT REPAIRS REQUIRED**

Sta. 186+90	16" Corr. Iron Pipe	32'
	Concrete Headwalls 1-2-4	15 Cu. Yds.
189+66	12" Corr. Iron Pipe	30'
	Concrete Headwalls 1-2-4	10 "
195+05	16" Corr. Iron Pipe With D.I.	30'
	1-E-4 Concrete	1.0 -
	1-3-6 "	2.5 -
199+40	3'x3' Concrete With D.I.	29'
	1-E-4 Concrete	7.85 Cu. Yds.
	1-3-6 "	11.9 -

SECTION	STAKE	TOP OF	SIGNAL	HEIGHT	TOTAL
NO.	VT.	24"	1920	15'	39'



Series N. 24. Filed  
Sheet 18 of 38

27