

GUARD RAIL REQUIRED ON LEFT

Sta. 174+22 to Sta. 174+70	Length	48'
Sta. 176+88 to Sta. 177+12	"	24'
Sta. 180+00 to Sta. 185+00	"	500'

ON RIGHT

Sta. 174+30 to Sta. 174+54	"	24'
Sta. 176+00 to Sta. 177+12	"	24'
Sta. 181+92 to Sta. 182+16	"	24'
Sta. 183+25 to Sta. 183+49	"	24'
Total This Sheet 668'		

NEW CULVERTS REQUIRED

Sta. 177+00	16" Cor. Iron Pipe With B.I. 30"	
	1-2-4 Concrete	1.0 Cu Yds.
	1-3-6 "	1.0 "

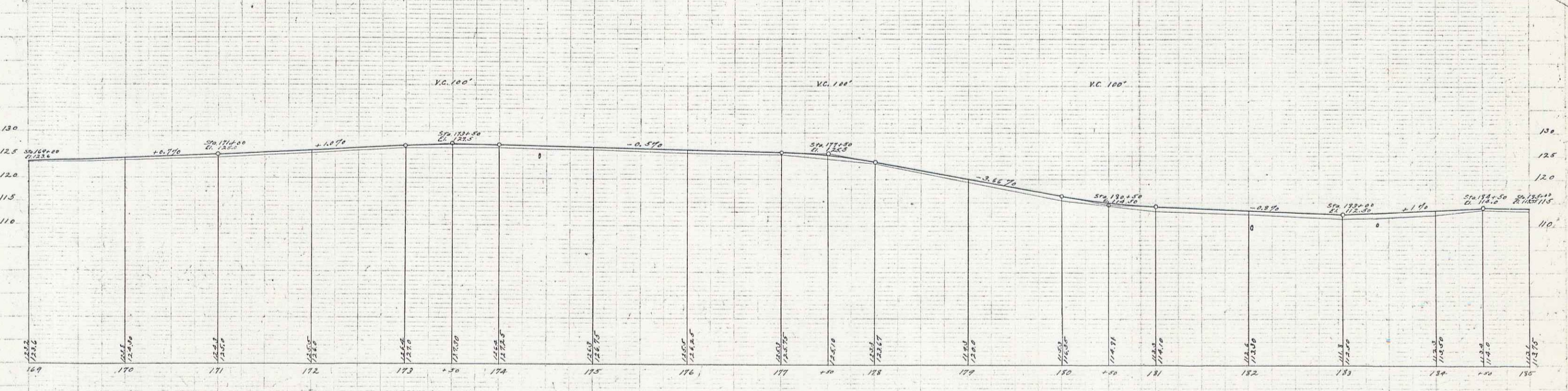
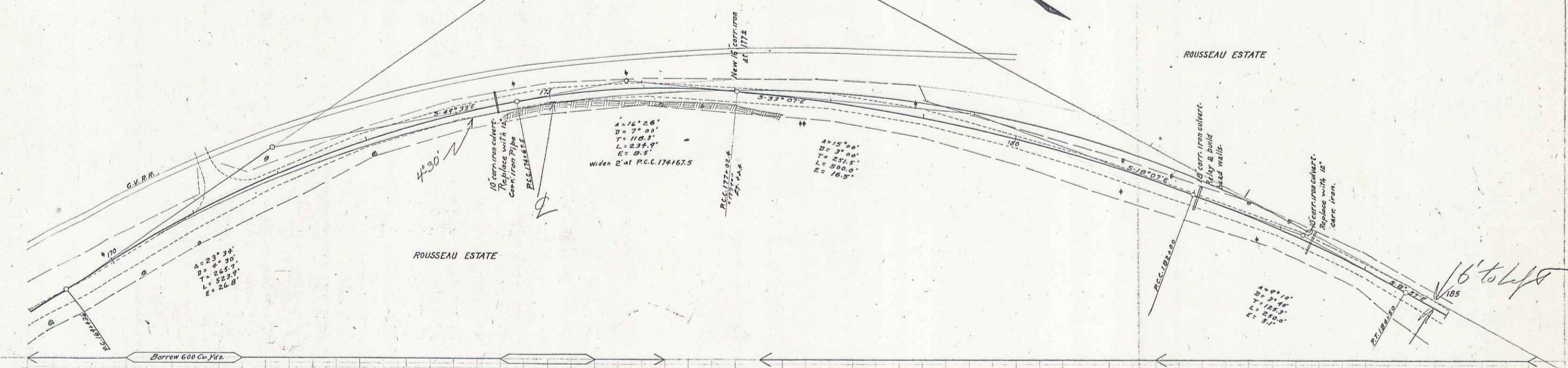
RELAYING PIPE CULVERTS

Sta. 182+04	"	25'
-------------	---	-----

GULVERT REPAIRS REQUIRED

Sta. 174+42	12" Cor. Iron Pipe	30'
	Concrete Headwalls 1-2-4	1.0 Cu Yds.
182+04	18" Cor. Iron Pipe	0.0'
	Concrete Headwalls 1-2-4	1.5 "
183+37	12" Cor. Iron Pipe	35'
	Concrete Headwalls 1-2-4	1.0 "

NO. ROAD	STRT	END	FOOTING	SWEEP	TOTAL
DATE	VF	EF	1820	JK	1820
7					



B.M. Nail in T.I. Pile No. of Sta. 189+95 Elev. 124.87
 B.M. Nail in T.I. Pile No. of Sta. 175+85 Elev. 123.61
 B.M. On Elm Tree No. of Sta. 181+15 Elev. 112.81

Series 37128 Filed
 Sept. 18, 1888