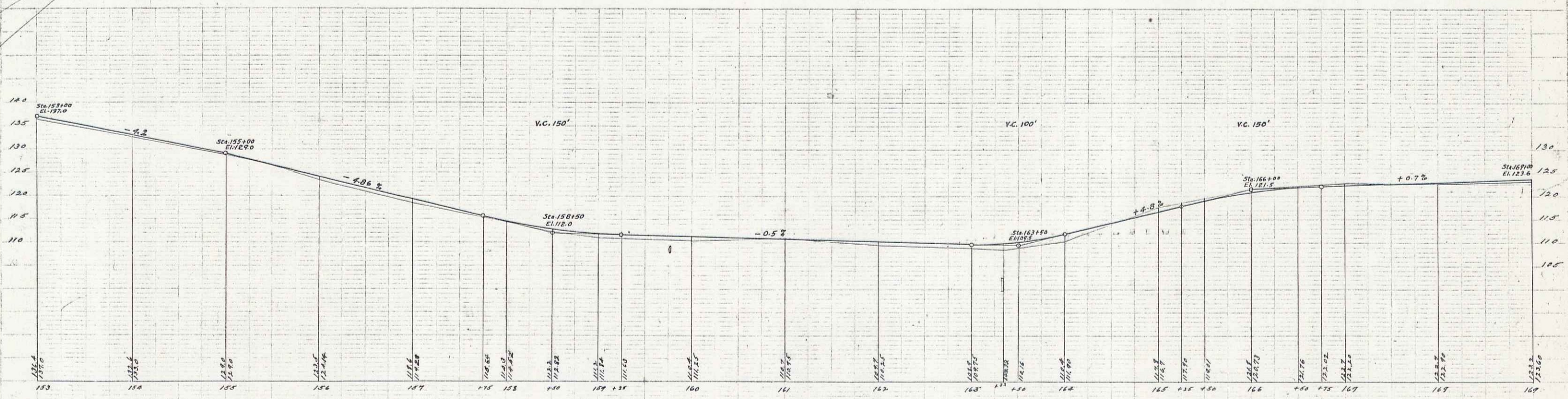
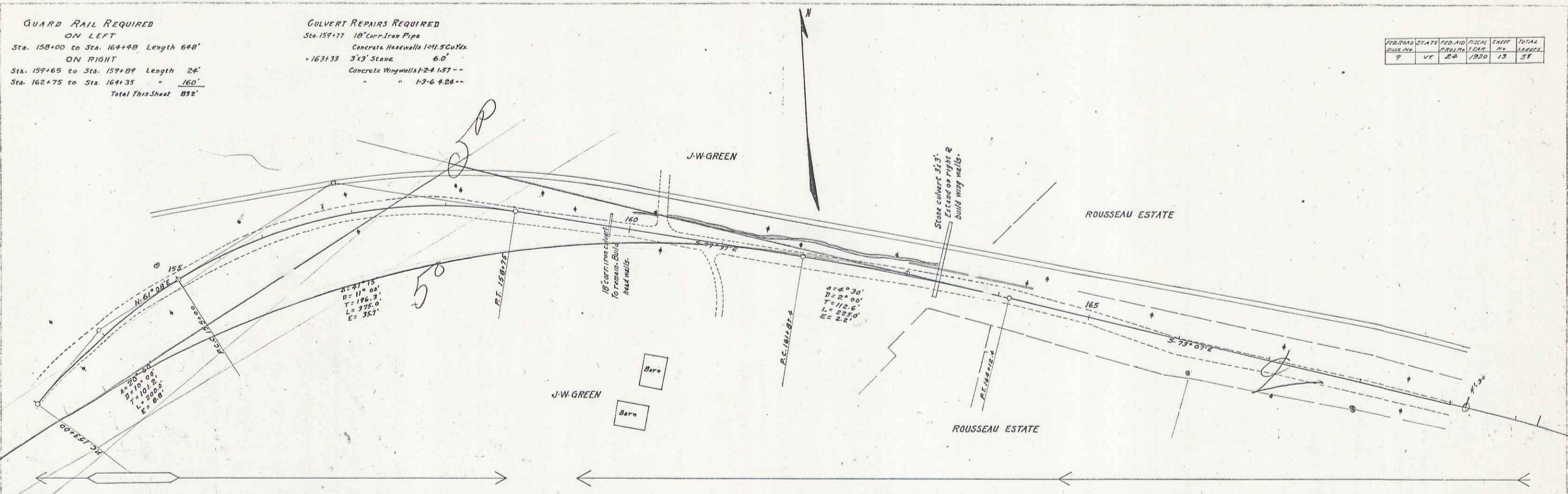


GUARD RAIL REQUIRED
 ON LEFT
 Sta. 158+00 to Sta. 164+48 Length 648'
 ON RIGHT
 Sta. 159+65 to Sta. 159+89 Length 24'
 Sta. 162+75 to Sta. 164+35 " 160'
 Total This Sheet 832'

CULVERT REPAIRS REQUIRED
 Sta. 159+77 18" Cor. Iron Pipe
 Concrete Headwalls 14x1.5 Cu Yds
 - 163+33 3'x3' Stone 6.0'
 Concrete Wingwalls 2-4 1.57' -
 " " 1-2-6 4.28' -

PROJNO	STATION	PROJNO	PROJNO	PROJNO	PROJNO
9	VF	26	1920	13	57



B.M. Nail in Tel. Pole Sta. of Sta. 153+60 Elev. 137.67
 B.M. Base of Rail No. of Sta. 158+80 Elev. 113.03

Series P. 1620 P. 100
 3200' 13 of 39

25