

**GUARD RAIL REQUIRED**

ON LEFT

|             |    |             |        |                       |
|-------------|----|-------------|--------|-----------------------|
| Sta. 142+40 | to | Sta. 151+00 | Length | 752'                  |
| Sta. 151+25 | to | Sta. 152+21 |        | 96'                   |
| ON RIGHT    |    |             |        |                       |
| Sta. 143+75 | to | Sta. 143+99 |        | 24'                   |
| Sta. 148+23 | to | Sta. 148+47 |        | 24'                   |
| Sta. 149+73 | to | Sta. 149+97 |        | 24'                   |
| Sta. 151+39 | to | Sta. 151+63 |        | 24'                   |
|             |    |             |        | Total This Sheet 944' |

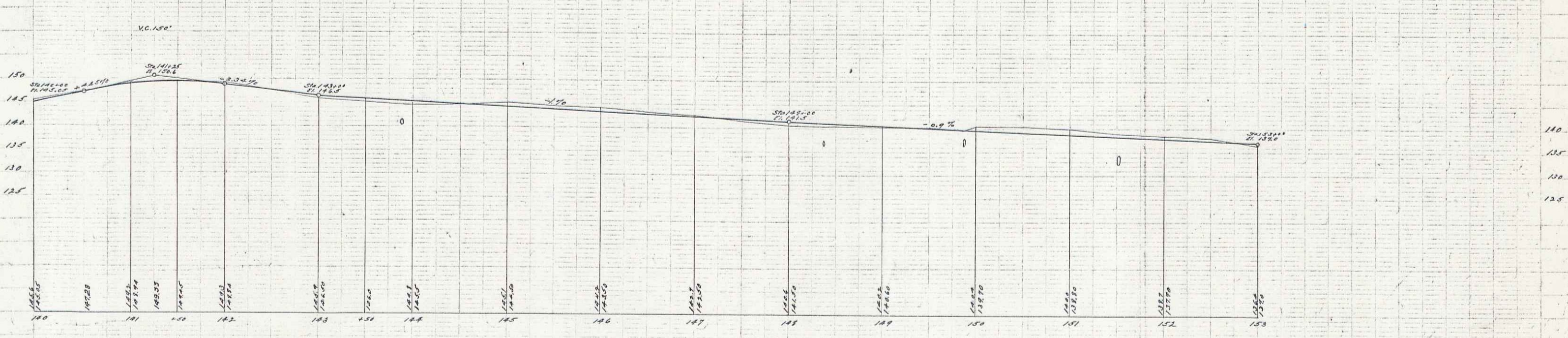
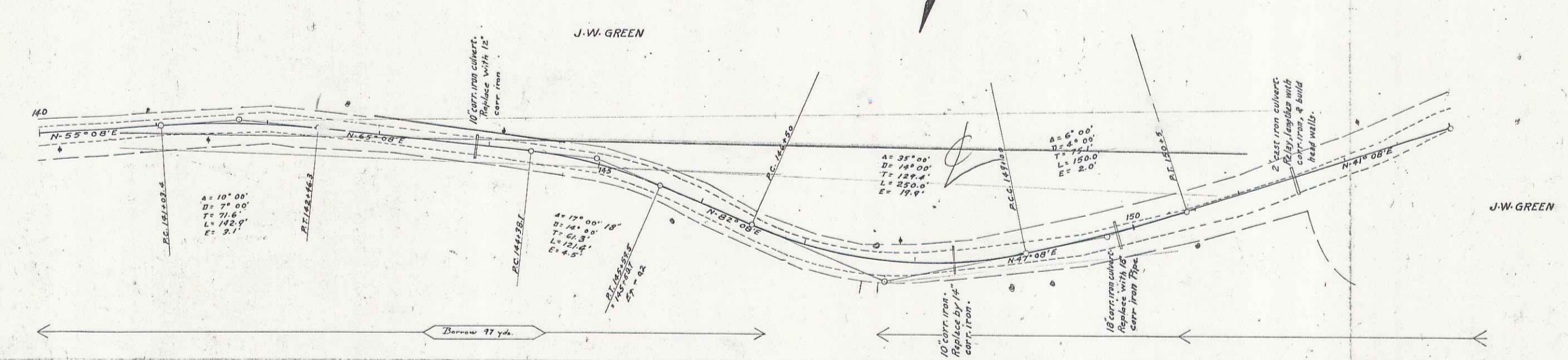
**CULVERT REPAIRS REQUIRED**

|             |                          |             |
|-------------|--------------------------|-------------|
| Sta. 143+07 | 12" Corr. Iron Pipe      | 34'         |
|             | Concrete Headwalls 1-2-4 | 1.0 Cu. Yd. |
| Sta. 148+35 | 14" Corr. Iron Pipe      | 36'         |
|             | Concrete Headwalls 1-2-4 | 1.0 "       |
| Sta. 149+85 | 18" Corr. Iron Pipe      | 38'         |
|             | Concrete Headwalls 1-2-4 | 1.5 "       |
| Sta. 151+51 | 24" Corr. Iron Pipe      | 12'         |
|             | Concrete Headwalls 1-2-4 | 2.0 "       |

**RELAYING PIPE CULVERTS**

Sta. 151+51 - 27'

|               |               |              |
|---------------|---------------|--------------|
| NO. OF SHEETS | NO. OF SHEETS | TOTAL SHEETS |
| 9             | 26            | 35           |



B.M. On Rock North of Sta. 141+90 Elev. 150.30  
 B.M. Nail in Maple Tree S. of Sta. 148+12 Elev. 144.11