

GUARD RAIL REQUIRED

ON LEFT

| | | |
|-------------|----------------|------------|
| Sta. 129+54 | to Sta. 130+50 | Length 96' |
| Sta. 132+18 | to Sta. 132+42 | 24' |
| Sta. 133+00 | to Sta. 134+04 | 24' |
| Sta. 137+57 | to Sta. 139+49 | 192' |

ON RIGHT

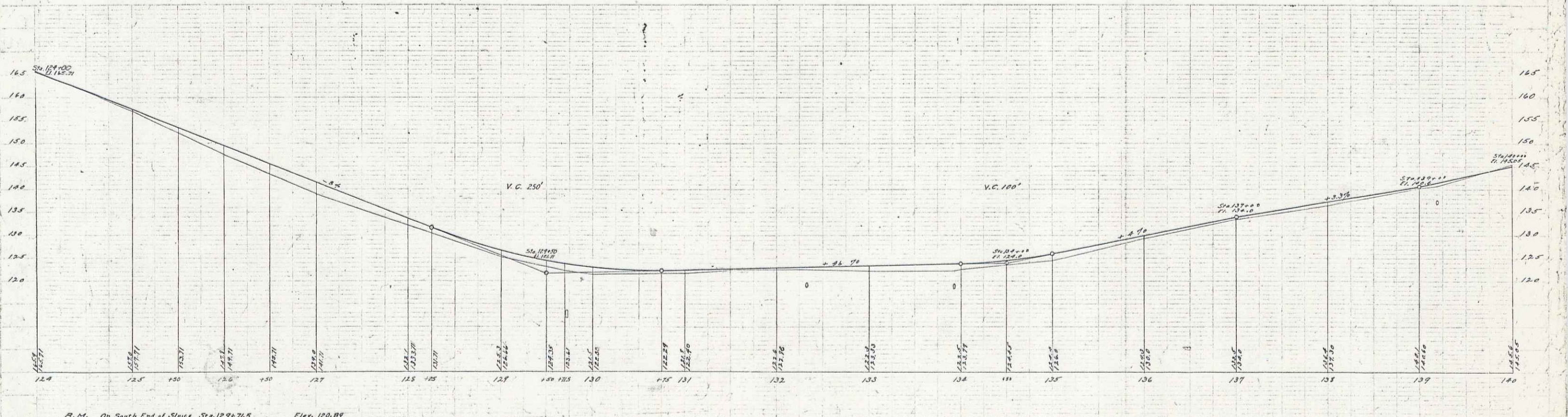
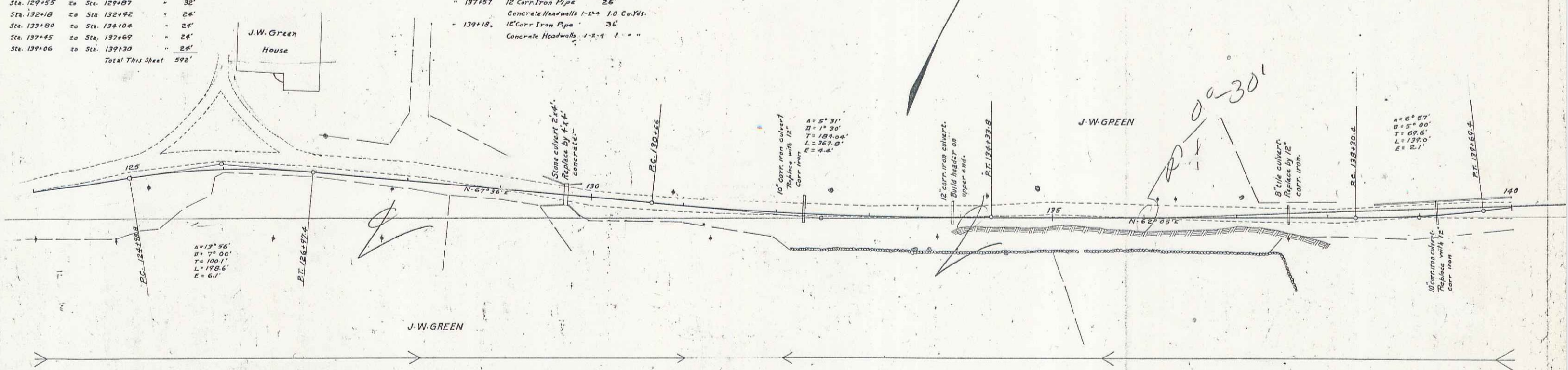
| | | |
|-------------|----------------|------|
| Sta. 125+75 | to Sta. 127+03 | 128' |
| Sta. 129+55 | to Sta. 129+87 | 32' |
| Sta. 132+18 | to Sta. 132+42 | 24' |
| Sta. 133+00 | to Sta. 134+04 | 24' |
| Sta. 137+45 | to Sta. 137+69 | 24' |
| Sta. 139+06 | to Sta. 139+30 | 24' |

Total This Sheet 592'

CULVERTS REPAIRS REQUIRED

| | | |
|---------------|--|----------------|
| Sta. 129+71.5 | 4'x4' Concrete | 41' |
| | 1-2'x Concrete | 13.99 Cu. Yds. |
| | 1-3'x6 " | 19.94 " |
| 132+30 | 12" Corv. Iron Pipe | 38' |
| | Concrete Headwalk 1-2-4 | 1 - " |
| 133+92 | 12" Corv. Iron Pipe | 6' |
| | Concrete Headwalk on Right 1-2-4 0.5 - " | |
| 137+57 | 12" Corv. Iron Pipe | 26' |
| | Concrete Headwalk 1-2-4 1.0 Cu. Yds. | |
| 139+18 | 12" Corv. Iron Pipe | 36' |
| | Concrete Headwalk 1-2-4 1 - " | |

| | | | | |
|----------|------|---------|----|------|
| FORM NO. | REV. | DATE | BY | CHK. |
| 4 | 1 | 2-24-28 | JA | JA |



B.M. On South End of Stake Sta. 129+71.5 Elev. 120.84
 B.M. On Peak South of Sta. 139+30 Elev. 142.91

Series F-24 P-100
 Sheet 11 of 38

23