

GUARD RAIL REQUIRED

ON LEFT

Sta. 80+38 to Sta. 80+62	Length	24'
Sta. 83+54 to Sta. 84+74	"	120'
Sta. 85+38 to Sta. 87+78	"	240'
Sta. 88+50 to Sta. 91+54	"	304'

ON RIGHT

Sta. 80+38 to Sta. 80+62	"	24'
Sta. 83+54 to Sta. 83+78	"	24'
Sta. 85+38 to Sta. 85+62	"	24'
Sta. 90+21 to Sta. 90+45	"	24'

Total This Sheet 784'

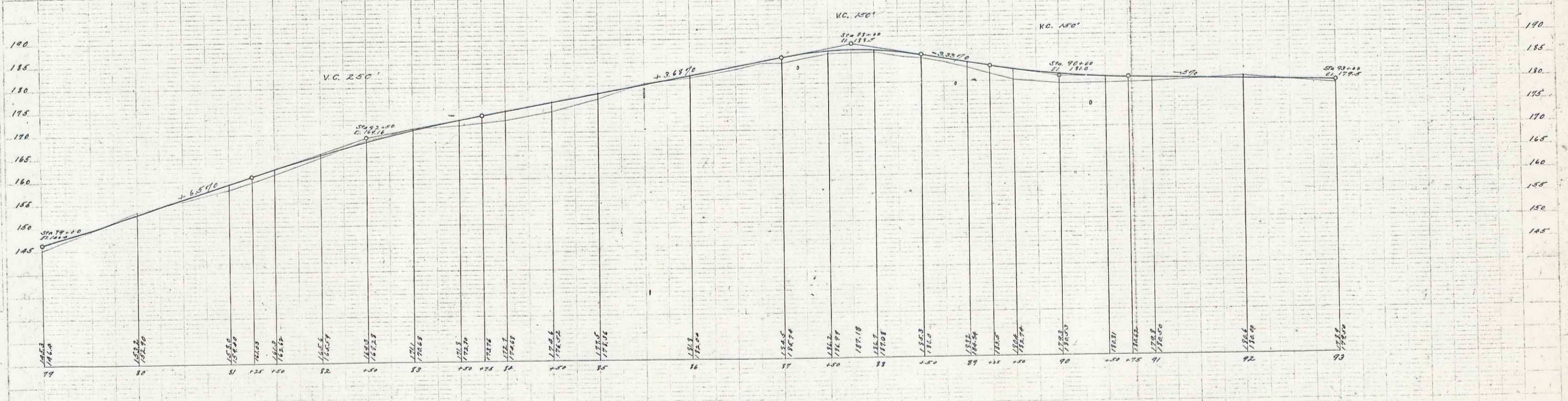
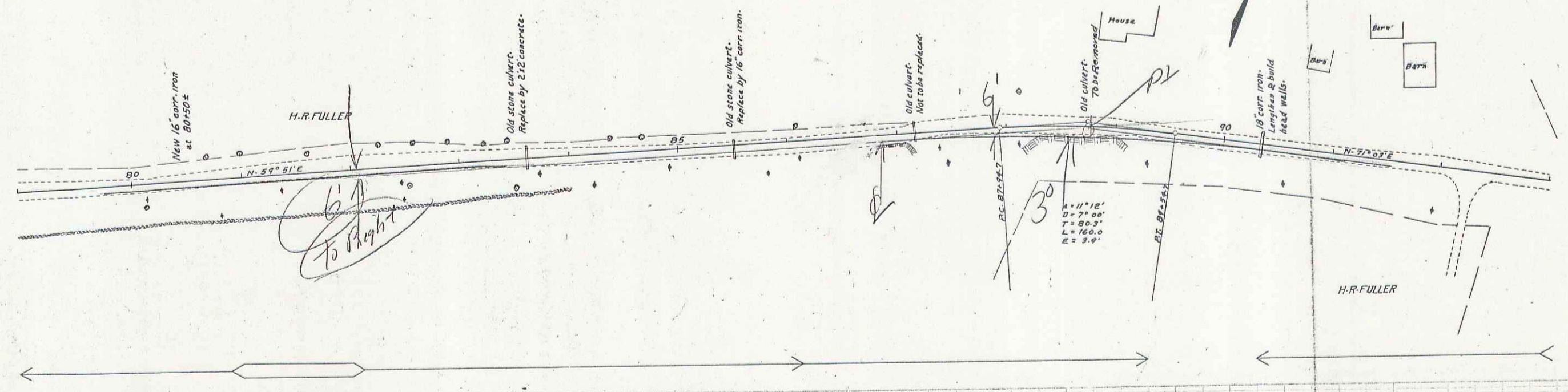
NEW CULVERTS REQUIRED

Sta. 80+50	16" Corr. Iron with B.I.	26'
	Concrete Headwalls 1-2-4	20 Cu Yds.

CULVERT REPAIRS REQUIRED

Sta. 83+66	2x2' Concrete	2.8'
	1-2-4 Concrete	5.65 Cu Yds.
	1-3-6 "	6.79 "
Sta. 85+50	16" Corr. Iron Pipe	26'
	Concrete Headwalls 1-2-4	1.5 Cu Yds.
Sta. 90+33	18" Corr. Iron Pipe	6'
	" " " "	8'
	Concrete Headwalls 1-2-4	1.5 Cu Yds.

FIELD NO.	DATE	TIME	SCALE	TOTAL SHEETS
9	VT	20	1/2" = 1'	37



B.P. On Maple Tree No. of Sta. 88+20 Elev. 187.97

Series F.N. 24 P. 17
Sheet 8 of 38

20