

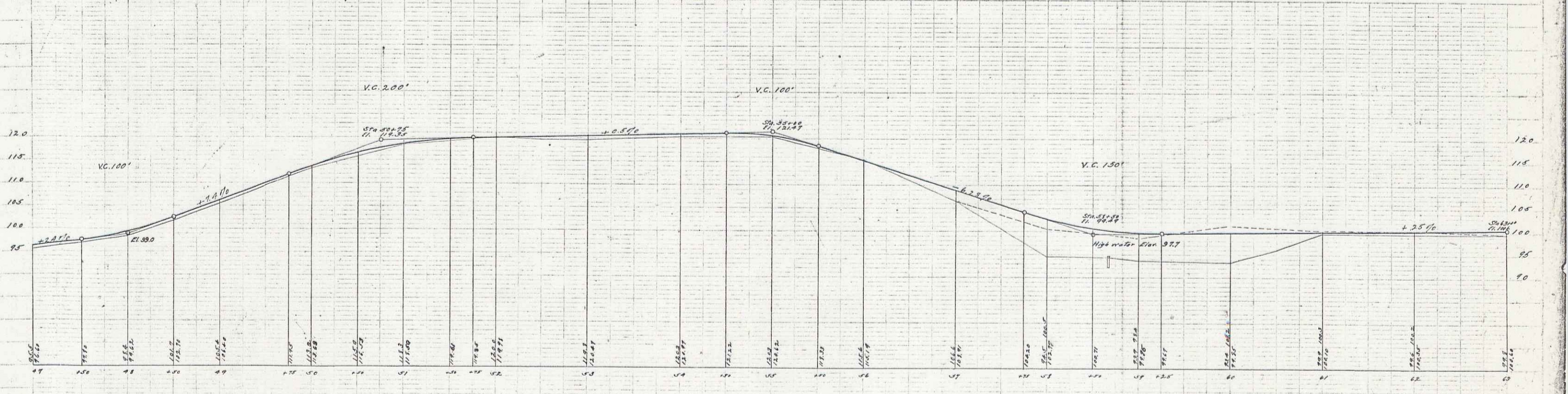
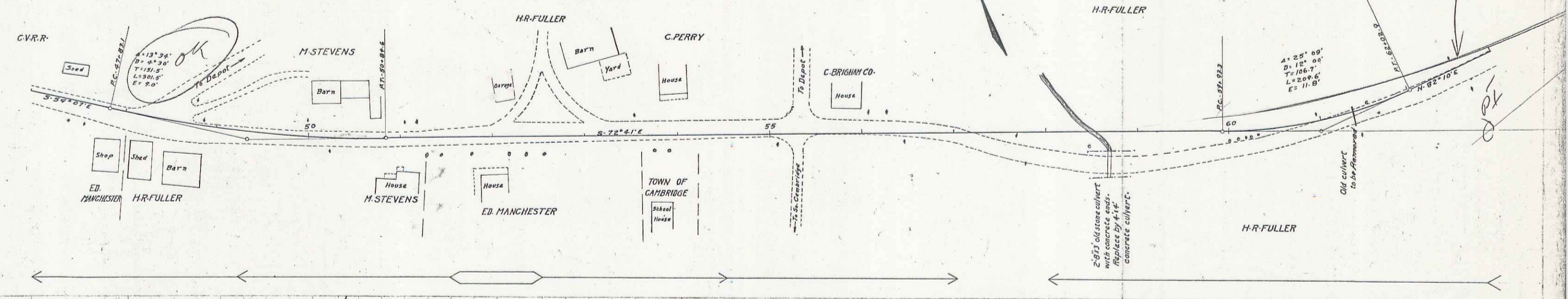
**GUARD RAIL REQUIRED**  
**ON LEFT**  
 Sta. 56+52 to Sta. 63+00 Length 698'  
**ON RIGHT**  
 Sta. 56+50 to Sta. 59+70 " 320'  
 Total This Sheet... 928'

**STONE BASE REQUIRED**  
 Sta. 62+00 to Sta. 63+00 Length 100'

**GULVERT REPAIRS REQUIRED**  
 Sta. 58+67 4x4' Concrete 32'  
 1-2-4 Concrete 11.09 Cu. Yds.  
 1-3-6 " 16.98 "

**UNDERDRAIN REQUIRED**  
 Sta. 57+83 to Sta. 56+00 Length 817'

DATE	BY	REVISION	NO.	TOTAL SHEETS
7	VT	24	1320	6
				38



B. 17. Nail in El. Light Pole Near No. W. Cor. E. Manchester's Shop Elev. 98.37  
 B. 17. Bottom Cor. Board S.W. Cor. House Owned by C. Brigham Co. No. of Sta. 55+60 Elev. 118.80  
 B. 17. No. W. Cor. of No. End Wall on Culvert at Sta. 58+67 Elev. 98.71

Scale 1" = 40' H'd  
 Sheet 6 of 38