

GUARD RAIL REQUIRED ON LEFT
 Sta. 33+50 to Sta. 38+54 Length 504'
 Sta. 41+25 to Sta. 42+53 " 128'
 Sta. 43+88 to Sta. 44+12 " 24'

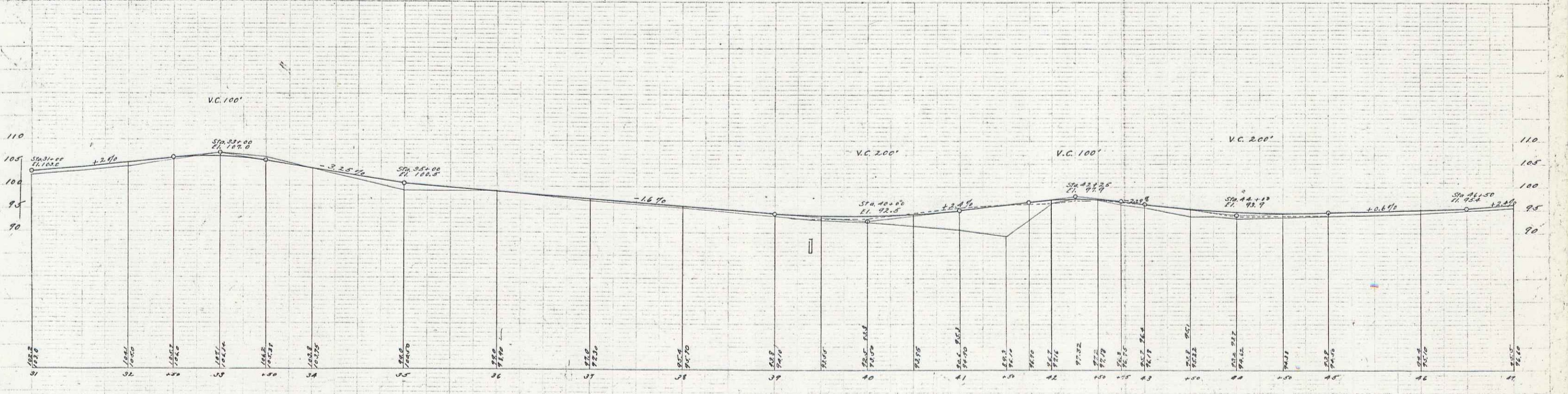
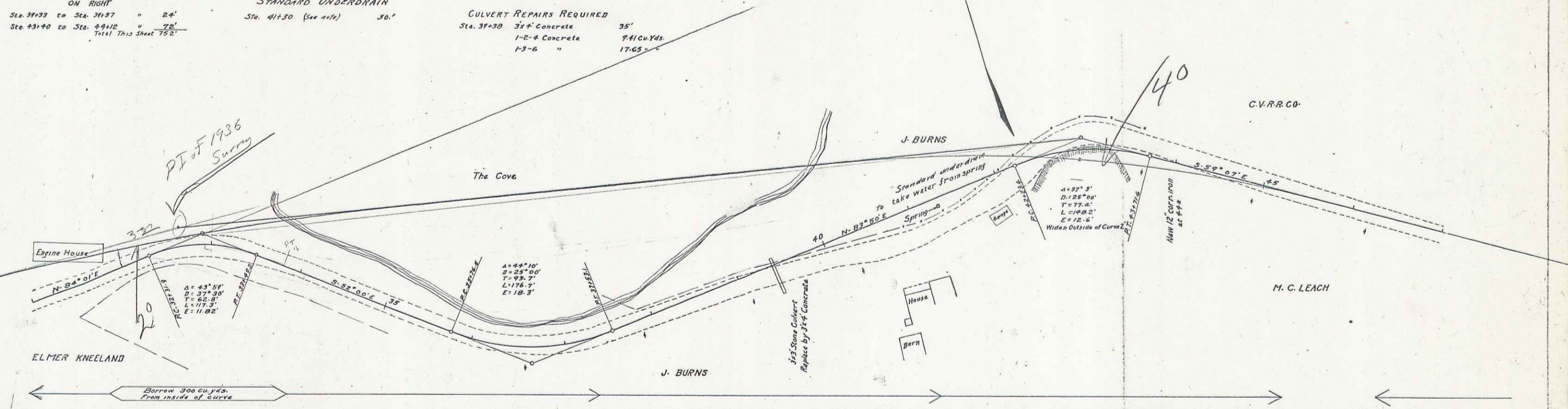
STONE BASE REQUIRED
 Sta. 31+00 to Sta. 40+00 Length 900'

STANDARD UNDERDRAIN
 Sta. 41+50 (see note) 30'

NEW CULVERTS REQUIRED
 44+00 12" Cor. Iron Pipe 32'
 Concrete Headwalls 1-2-4 1.0 Cu Yds.

CULVERT REPAIRS REQUIRED
 Sta. 38+38 3/4" Concrete 35'
 1-2-4 Concrete 7.41 Cu Yds.
 1-3-6 " 17.65 "

NO.	DATE	BY	REVISION	BY	REVISION
1	VT	24	1000	J	38



B.M. Spike in So. East Cor. Engine House Elev. 105.32
 B.M. Top of Foundation N.W. Cor. J. Burns Garage Elev. 98.22