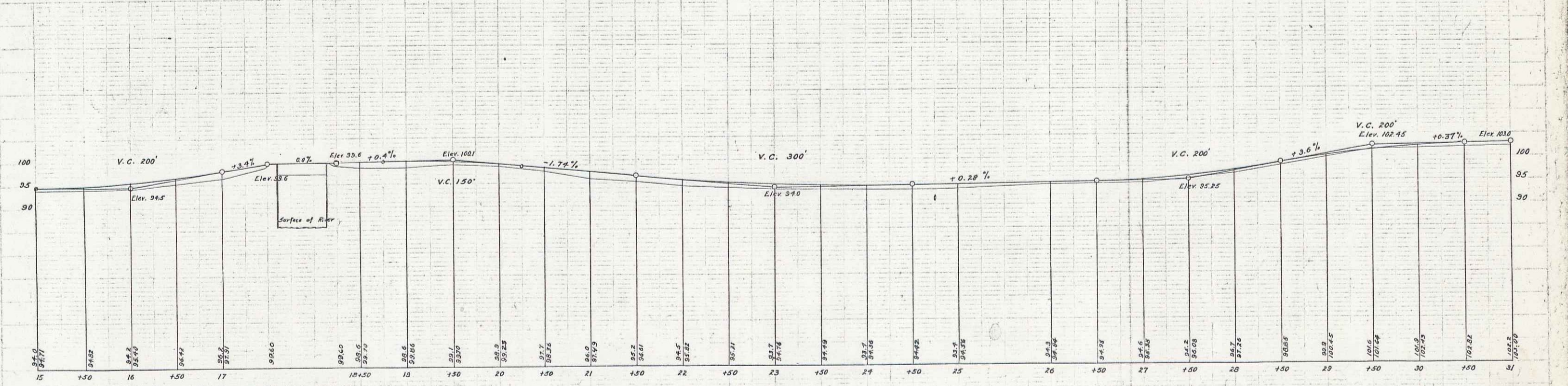
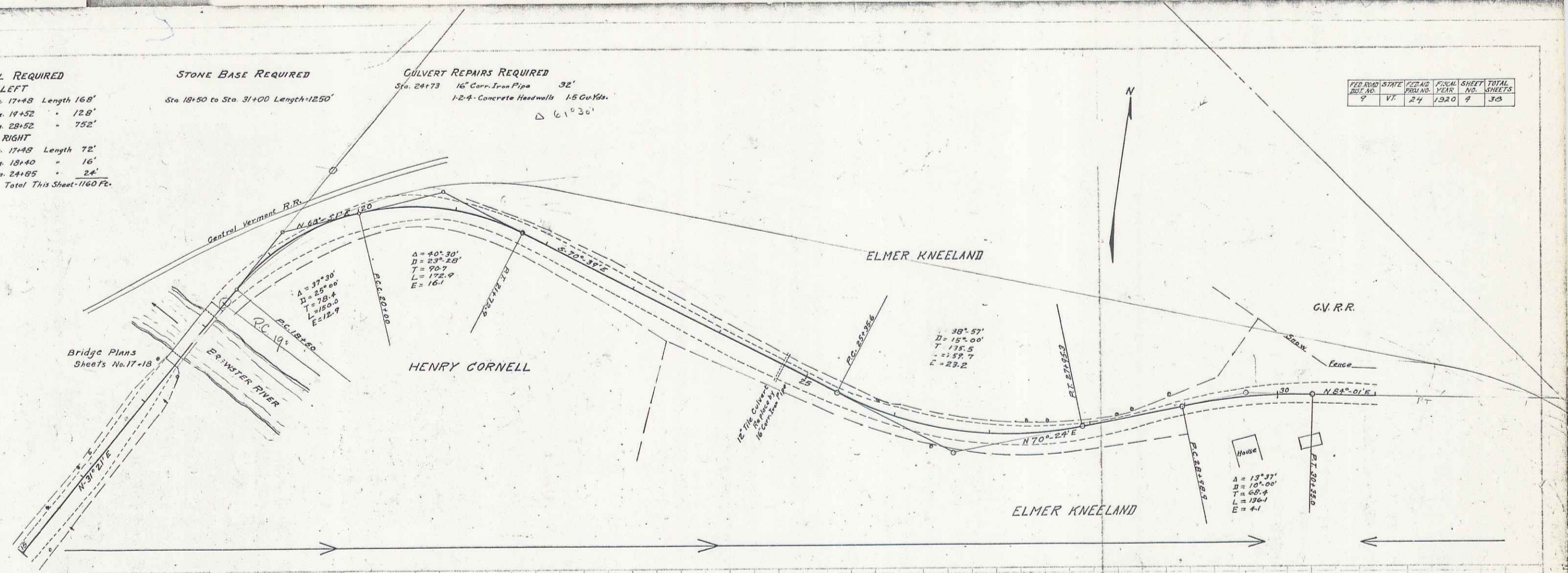


GUARD RAIL REQUIRED
ON LEFT
 Sta. 15+80 to Sta. 17+48 Length 168'
 Sta. 18+24 - Sta. 19+52 - 128'
 Sta. 21+00 - Sta. 23+52 - 252'
ON RIGHT
 Sta. 16+76 to Sta. 17+48 Length 72'
 Sta. 18+24 - Sta. 18+40 - 16'
 Sta. 24+61 - Sta. 24+85 - 24'
 Total This Sheet - 1160 Ft.

STONE BASE REQUIRED
 Sta. 18+50 to Sta. 31+00 Length 1250'

CULVERT REPAIRS REQUIRED
 Sta. 24+73 16" Corr. Iron Pipe 32'
 1-2-4" Concrete Headwalls 1.5 Cu Yds.
 Δ 61°30'

FED. ROAD DIST. NO.	STATE	FISCAL YEAR	SHEET NO.	TOTAL SHEETS
7	Vt.	24	1920	7



B.M. Top of ball inside of top girder S.E. corner R.R. bridge. Elev. 100.
 B.M. Spike in elm tree of Sta. 20+35 Elev. 98.99

Series P. No. 24. 11/10
 Sheet 4 of 8

16