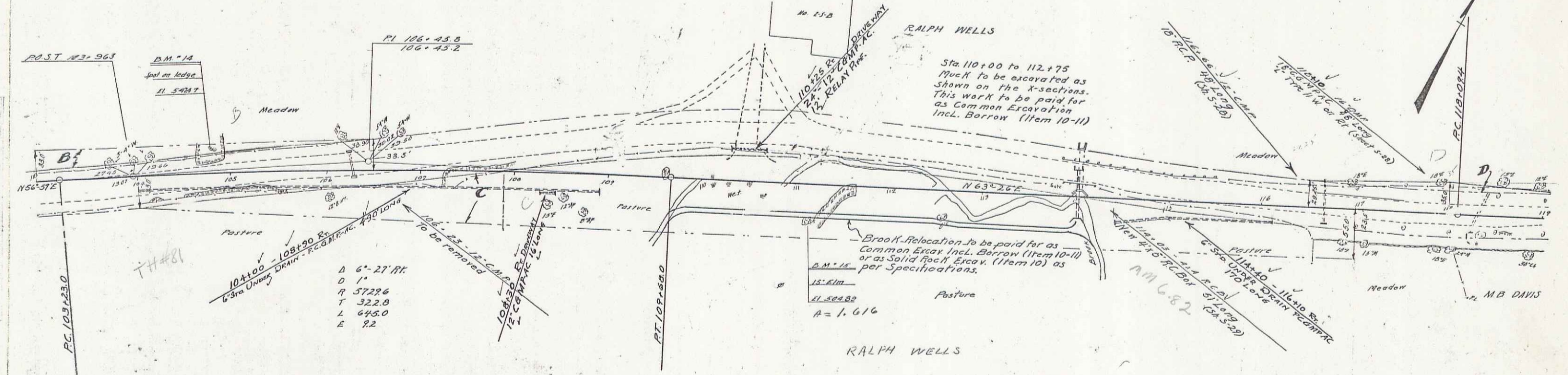


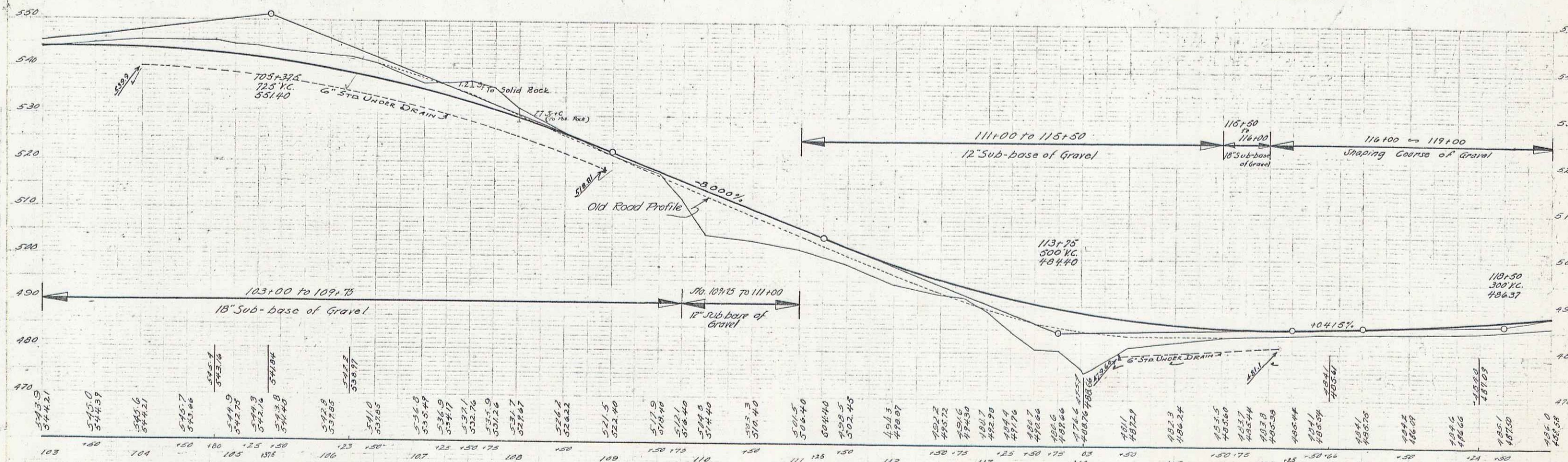
24 1938 11 65  
 CAP 2



104+100 - 108+90 P.C.  
 6" STA UNDER DRAIN P.C. 104+100  
 A 6'-27" RT.  
 D 1'  
 P 5722.6  
 T 322.8  
 L 645.0  
 E 22

Brook Relocation to be paid for as  
 Common Excav. Incl. Borrow (Item 10-11)  
 or as Solid Rock Excav. (Item 10) as  
 per Specifications.  
 15' RIM  
 EL 502.80  
 R = 1.616

PARCEL	INSTRUMENT	DATE	GRANTOR	GRANTEE	RECORDED	REMARKS
A-B-C-D	G.C.O.	11-9-37	RALPH E. WELLS	STOF. VT.	BOOK PAGE DATE 35 548-549 11/2/37	CH. STA 89100



STATION	ELEVATION	STATION	ELEVATION	STATION	ELEVATION	STATION	ELEVATION
103	543.9	107	521.5	111	504.4	115	487.3
104	544.21	108	522.40	112	504.40	116	486.24
105	545.0	109	521.9	113	502.85	117	485.75
106	545.6	110	517.9	114	502.66	118	485.0
107	546.2	111	516.40	115	481.6	119	484.58
108	546.7	112	514.40	116	480.6		
109	547.4	113	512.3	117	479.6		
110	548.1	114	510.40	118	478.6		
111	548.8	115	508.3	119	477.6		
112	549.5	116	506.40				
113	550.2	117	504.40				
114	550.9	118	502.40				
115	551.6	119	500.40				
116	552.3						
117	553.0						
118	553.7						
119	554.4						
120	555.1						
121	555.8						
122	556.5						
123	557.2						
124	557.9						
125	558.6						
126	559.3						
127	560.0						
128	560.7						
129	561.4						
130	562.1						
131	562.8						
132	563.5						
133	564.2						
134	564.9						
135	565.6						
136	566.3						
137	567.0						
138	567.7						
139	568.4						
140	569.1						
141	569.8						
142	570.5						
143	571.2						
144	571.9						
145	572.6						
146	573.3						
147	574.0						
148	574.7						
149	575.4						
150	576.1						
151	576.8						
152	577.5						
153	578.2						
154	578.9						
155	579.6						
156	580.3						
157	581.0						
158	581.7						
159	582.4						
160	583.1						
161	583.8						
162	584.5						
163	585.2						
164	585.9						
165	586.6						
166	587.3						
167	588.0						
168	588.7						
169	589.4						
170	590.1						
171	590.8						
172	591.5						
173	592.2						
174	592.9						
175	593.6						
176	594.3						
177	595.0						
178	595.7						
179	596.4						
180	597.1						
181	597.8						
182	598.5						
183	599.2						
184	599.9						
185	600.6						
186	601.3						
187	602.0						
188	602.7						
189	603.4						
190	604.1						
191	604.8						
192	605.5						
193	606.2						
194	606.9						
195	607.6						
196	608.3						
197	609.0						
198	609.7						
199	610.4						
200	611.1						

SERIES F.A.P. No 24 (cont 2)  
 SHEET 11 OF 65