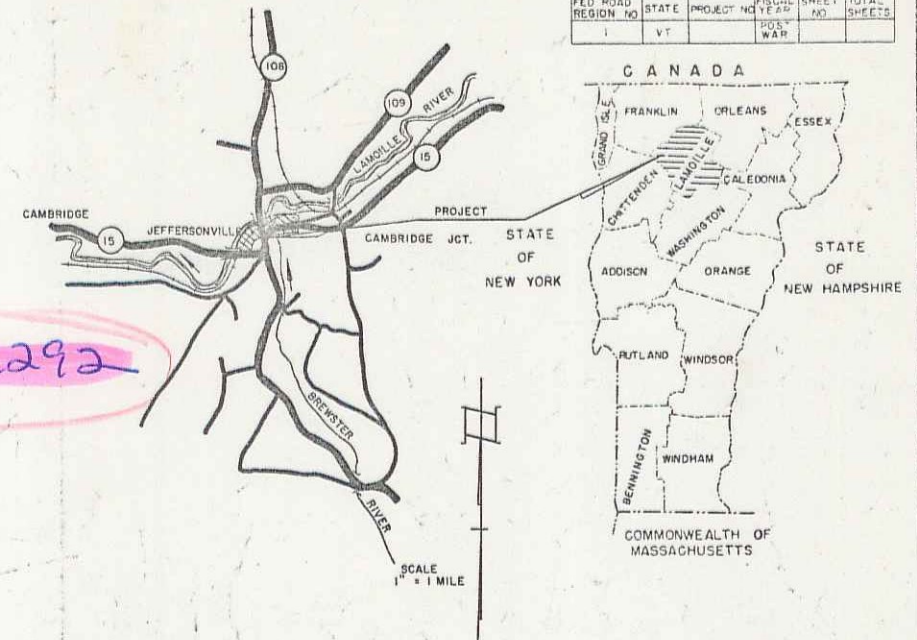


INDEX OF SHEETS

- 1 TITLE PAGE
- 2 TYPICAL CROSS SECTION OF IMPROVED BITUMINOUS CONCRETE PAVEMENT
- 3 QUANTITY SHEET (ITEMS)
- 4 QUANTITY SHEET (DRAINAGE)
- 5-7 EARTHWORKS - ROADWAY
- 8-12 PLAN AND PROFILE
- 13 BRIDGE PLAN
- 14 PRELIMINARY BRIDGE SHEET (INFORMATION)
- 14-A BRIDGE PLAN AND ELEVATION
- 15 SUPERSTRUCTURE PLAN
- 16 DETAILS - ABUTMENTS NO. 1 & 2
- 17 DETAILS OF PIER
- 18 REINFORCING STEEL SCHEDULE
- 19 EARTHWORK (BRIDGE)
- 20 BRIDGE STANDARD SCB 30-56 SHEETS 1 & 2
- 21 BRIDGE STANDARD SB 20-56
- 22 BRIDGE STANDARD SB 56-57
- 23 ROADWAY STANDARD A-61 DRILLING AND BLASTING
- 24 ROADWAY STANDARD B-1 BANKING TABLES
- 25 ROADWAY STANDARD B-9 SLOPE GRADING
- 26 ROADWAY STANDARD D-2 CEMENT RUBBLE MASONRY & UNDERDRAIN
- 27 ROADWAY STANDARD G-3 THREE CABLE GUARD RAIL
- 28 ROADWAY STANDARD G-4 STEEL MARKER POSTS
- 28-A ROADWAY STANDARD J-1 PROJECT MARKERS
- 29 ROADWAY STANDARD RS 56-12 BARRICADES, SIGNS, & LIGHTS
- 29-A ROADWAY STANDARD RS 57-9 FLUSHING BASINS
- 30-52 CROSS SECTIONS
- 53-56 CHANNEL SECTIONS
- 55-A PAILED SHEET - NEW CROSSING

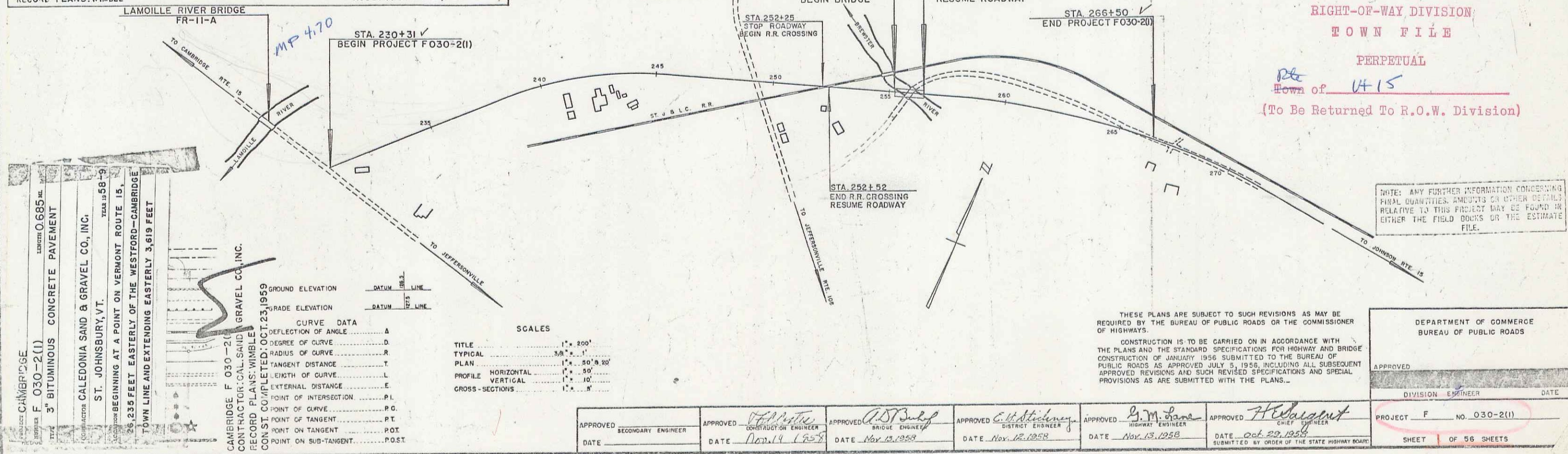
STATE OF VERMONT
DEPARTMENT OF HIGHWAYS
Proposed Improvement
FEDERAL PROJECT
TOWN OF CAMBRIDGE Pin#00R292
COUNTY OF LAMOILLE
VERMONT ROUTE 15
CAMBRIDGE - JOHNSON ROAD



BEGINNING AT A POINT ON VERMONT ROUTE 15, 26,236 FEET EASTERLY OF THE WESTFORD - CAMBRIDGE TOWN LINE AND EXTENDING EASTERLY 3,619 FEET.

ROADWAY	3,674.0 FT.	0.698 MILE
R.R. CROSSING	27.0 FT.	0.005 MILE
BRIDGE	118.0 FT.	0.022 MILE
PROJECT TOTAL	3,819.0 FT.	0.685 MILE

PROJECT NAME & NUMBER	TYPE	PAVEMENT AREA
CAMBRIDGE F 030-2(1)	3" BIT. CONCRETE PAVEMENT	9264 SQ. Y.
RECORD PLANS MATERIALS		
SUBBASE OF GRAVEL: SAFFORD PIT, STEWART PIT, CA 48 BRIDGE, VT. GRANITE BRIDGE CURB: BARRETTO GRANITE CORP. MILFORD, N.H.		
SUBBASE OF SAND: SAFFORD PIT, CAMBRIDGE, VT. BRIDGE RAILING: WARD WELLS CO., INC. NEWTON LOWER FALLS, MASS.		
REFINED TARS: B. R. T. CO., WILSON, MASS. CEMENT: PORTLAND T. J. JOHNSON STORES, CAMBRIDGE, VT.		
CUTBACK ASPHALT: MOBIL OIL CO., E. PROV., R.I.		
D. J. CROHN ASPHALT INC., EAST PROVIDENCE, R.I.		
PEASTONE & GR. TS. MADE IN GRAVEL PLANT, JOHNSON, VT.		
BIT. CL. (ROADWAY) AGGREGATES: CAL. SAID & CRA. CO. PIT, ST. J. & PLAINFIELD, VT.		
ASPHALT: MOBIL - TANDAU OIL CO., ALBANY, N.Y.		
BIT. COI (ERIC) 1: AGGREGATES: NACAU GRAVEL PLANT, JOHNSON, VT., ASPHALT: ESSO OIL CO., EVERETT, MASS.		
CONCRETE (CLASS B): S. T. GRISWOLD CO. INC., ESSEX JCT., VT.		
REIN. STEEL: BETHLEHEM STEEL CO., BETHLEHEM, PA.		
STRUCT. SPIRAL STEEL: VT. STRUCTURAL STEEL CORP., BURLINGTON, VT.		
ACCOMP. PIPE: NEW ENGLAND METAL CULVERT CO., BOSTON, MASS.		
R.C. PIPE: V. COLLINS & CO., WINDSOR, VT.		
TIMBER PILES (UNTREATED): WM. N. FOOTER, REEDS FERRY, N.H.		
(TREATED) NEW ENG. POLE & WOOD TREATING CORP., MERRIMACK, N.H.		
GUARD RAIL: COBURN STEEL POSTS & STEEL MARKER POSTS: BETHLEHEM STEEL CO., BETHLEHEM, PA.		
FLANK GUARD RAIL: S. T. GRISWOLD CO. INC., ESSEX JCT., VT.		
CONTRACTOR: CAL. SAND & GRAVEL CO., INC., ST. JOHNSBURY, VT. CONTRACT: DEC. 3, 1958		
RESIDENT ENGINEER: L. COLLINS, W. WASHNER STARTED: DEC. 3, 1958		
SUPERVISOR: COMPLETED: OCT. 23, 1959		
ACCEPTED: OCT. 23, 1959		
RECORD PLANS: WIMBLE		



RIGHT-OF-WAY DIVISION
TOWN FILE
PERPETUAL
Town of VT 15
(To Be Returned To R.O.W. Division)

NOTE: ANY FURTHER INFORMATION CONCERNING FINAL QUANTITIES, AMOUNTS OR OTHER DETAILS RELATIVE TO THIS PROJECT MAY BE FOUND IN EITHER THE FIELD BOOKS OR THE ESTIMATE FILE.

CAMBRIDGE F 030-2(1)	3" BITUMINOUS CONCRETE PAVEMENT	LENGTH 0.685 MI.
CONTRACTOR: CALEDONIA SAND & GRAVEL CO., INC.	ST. JOHNSBURY, VT.	TEL. 19 88-9
BEGINNING AT A POINT ON VERMONT ROUTE 15, 26,236 FEET EASTERLY OF THE WESTFORD - CAMBRIDGE TOWN LINE AND EXTENDING EASTERLY 3,619 FEET		
CAMBRIDGE F 030-2(1) GRAVEL CO., INC.		
CONTRACTOR: CAL. SAND & GRAVEL CO., INC.		
RECORD PLANS: WIMBLE		
CON. ST. COMPLETED: OCT. 23, 1959		
GROUND ELEVATION	DATUM	FEET LINE
GRADE ELEVATION	DATUM	FEET LINE
CURVE DATA		
DEFLECTION OF ANGLE	Δ
DEGREE OF CURVE	D
RADIUS OF CURVE	R
TANGENT DISTANCE	T
LENGTH OF CURVE	L
EXTERNAL DISTANCE	E
POINT OF INTERSECTION	P.I.
POINT OF CURVE	P.C.
POINT OF TANGENT	P.T.
POINT ON TANGENT	P.O.T.
POINT ON SUB-TANGENT	P.O.S.T.

SCALES

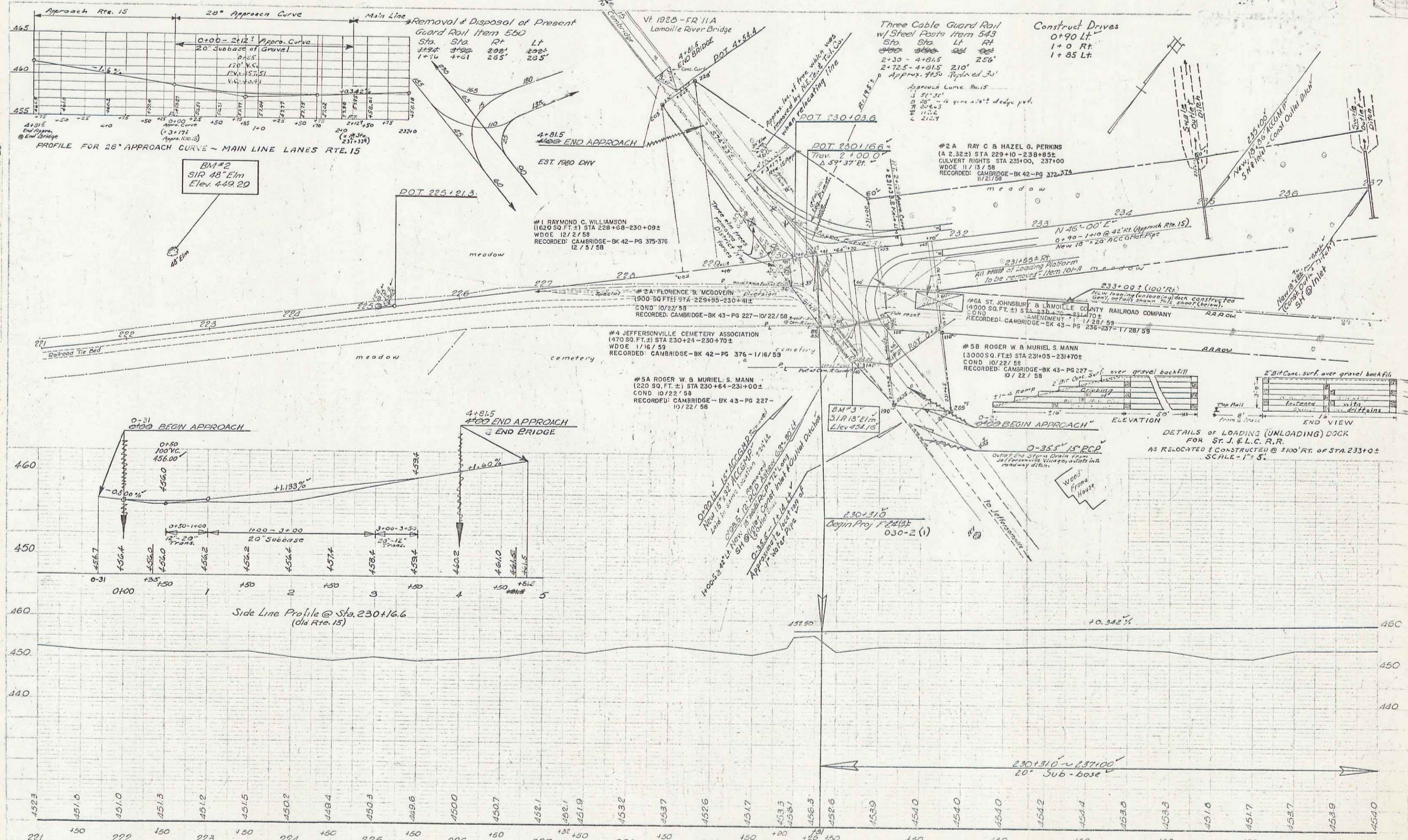
TITLE	1" = 200'
TYPICAL	3/4" = 1'
PLAN	1" = 50' & 30'
PROFILE HORIZONTAL	1" = 50'
VERTICAL	1" = 10'
CROSS-SECTIONS	1" = 10'

THESE PLANS ARE SUBJECT TO SUCH REVISIONS AS MAY BE REQUIRED BY THE BUREAU OF PUBLIC ROADS OR THE COMMISSIONER OF HIGHWAYS.

CONSTRUCTION IS TO BE CARRIED ON IN ACCORDANCE WITH THE PLANS AND THE STANDARD SPECIFICATIONS FOR HIGHWAY AND BRIDGE CONSTRUCTION OF JANUARY 1956 SUBMITTED TO THE BUREAU OF PUBLIC ROADS AS APPROVED JULY 5, 1956, INCLUDING ALL SUBSEQUENT APPROVED REVISIONS AND SUCH REVISED SPECIFICATIONS AND SPECIAL PROVISIONS AS ARE SUBMITTED WITH THE PLANS.

DEPARTMENT OF COMMERCE BUREAU OF PUBLIC ROADS	
APPROVED	DATE
DIVISION ENGINEER	DATE
PROJECT F	NO. 030-2(1)
SHEET 1 OF 56 SHEETS	

APPROVED	APPROVED	APPROVED	APPROVED	APPROVED	APPROVED
SECONDARY ENGINEER	BRIDGE ENGINEER	DISTRICT ENGINEER	HIGHWAY ENGINEER	CHIEF ENGINEER	
DATE	DATE	DATE	DATE	DATE	
	Nov. 14, 1958	Nov. 13, 1958	Nov. 13, 1958	Oct. 29, 1958	



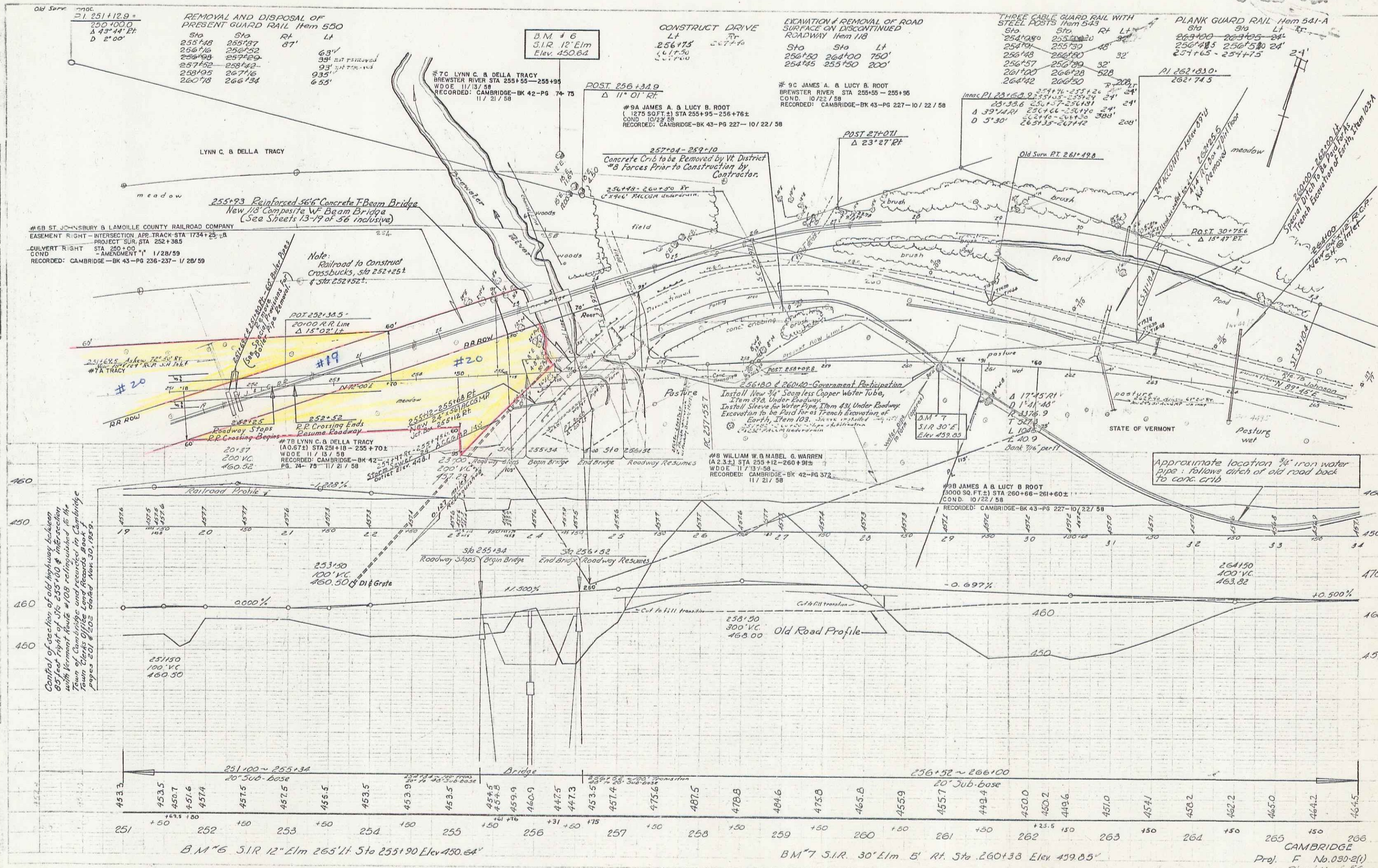
Vertical Curve
11-56
11-56

Vertical Curve
11-56
11-56

B.M. #2 S1R 48' Elm 9811 Sta 222+70 Elev 449.29

B.M. #3 S1R 15' Elm 130' Rt Sta 230+55 Elev 454.16

CAMBRIDGE
Proj. F No. 030-2(1)
Sheet 8 of 56



Old Surv
 21 251+12.9 =
 250+00.0
 Δ 43°44' E
 D 2'00"

REMOVAL AND DISPOSAL OF
 PRESENT GUARD RAIL Item 550

Sta	Sta	RI	LI
255+18	255+37	87'	
256+16	256+52	63'	39' not removed
258+19	258+59	93'	39' not removed
257+52	258+42	93'	
258+05	267+16	935'	
260+18	266+34	655'	

D.M. # 6
 S.I.R. 12' Elm
 Elev. 450.64

CONSTRUCT DRIVE
 LT RT
 256+75 257+75
 467.70 457.70

EXCAVATION & REMOVAL OF ROAD
 SURFACE ON DISCONTINUED
 ROADWAY Item 118

Sta	Sta	LT
256+50	264+00	750'
264+35	255+50	200'

THREE CABLE GUARD RAIL WITH
 STEEL POSTS Item 543

Sta	Sta	RI	LI
254+08	255+30	30'	
254+10	255+30	48'	
256+48	256+80	32'	
256+57	256+80	32'	
261+00	266+28	528'	
264+42	266+50	208'	

PLANK GUARD RAIL Item 541-A

Sta	Sta	LI
264+00	264+05	24'
256+45	256+58	24'
257+65	257+75	

#6B ST. JOHNSBURY & LAMOILLE COUNTY RAILROAD COMPANY
 EASEMENT RIGHT - INTERSECTION AVE. TRACK STA 1734+25.2A
 PROJECT SUR. STA 252+38.5
 CULVERT RIGHT STA 250+00
 AMENDMENT "A" 1/28/59
 RECORDED: CAMBRIDGE-BK 43-PG 227-10/22/59

255+93 Reinforced 36" Concrete T-Beam Bridge
 New 1/8 Composite WF Beam Bridge
 (See Sheets 13-19 of 56 Inclusive)

Note:
 Railroad to Construct
 Crossbucks, Sta 252+251
 & Sta 252+521.

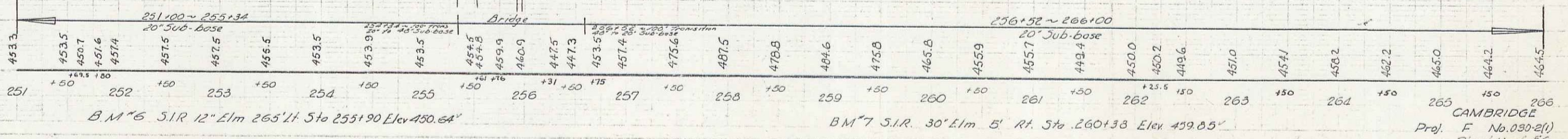
Control of section of left highway between
 251+00 and 255+100 to be retained by
 with Vermont State #108 relinquished to the
 Town of Cambridge and returned to Cambridge
 Town Clerk's Office Land Records Book 7
 pages 201 & 202 dated Nov. 30, 1959.

256+80 & 260+00 - Government Participation
 Install New 3/4" Seamless Copper Water Tube,
 2.7m 378, Under Roadway.
 Install Sleeve for Water Pipe Item 431 Under Roadway.
 Excavation to be Paid for as Trench Excavation of
 Earth, Item 103. Sleeve includes 2" x 1/2"
 256' Price of Underdrain

#8 WILLIAM W.B. MABEL G. WARREN
 (A 2.3.2) STA 255+12 - 260+91.5
 W.D.E. 11/13/58
 RECORDED: CAMBRIDGE-BK 42-PG 372
 11/21/58

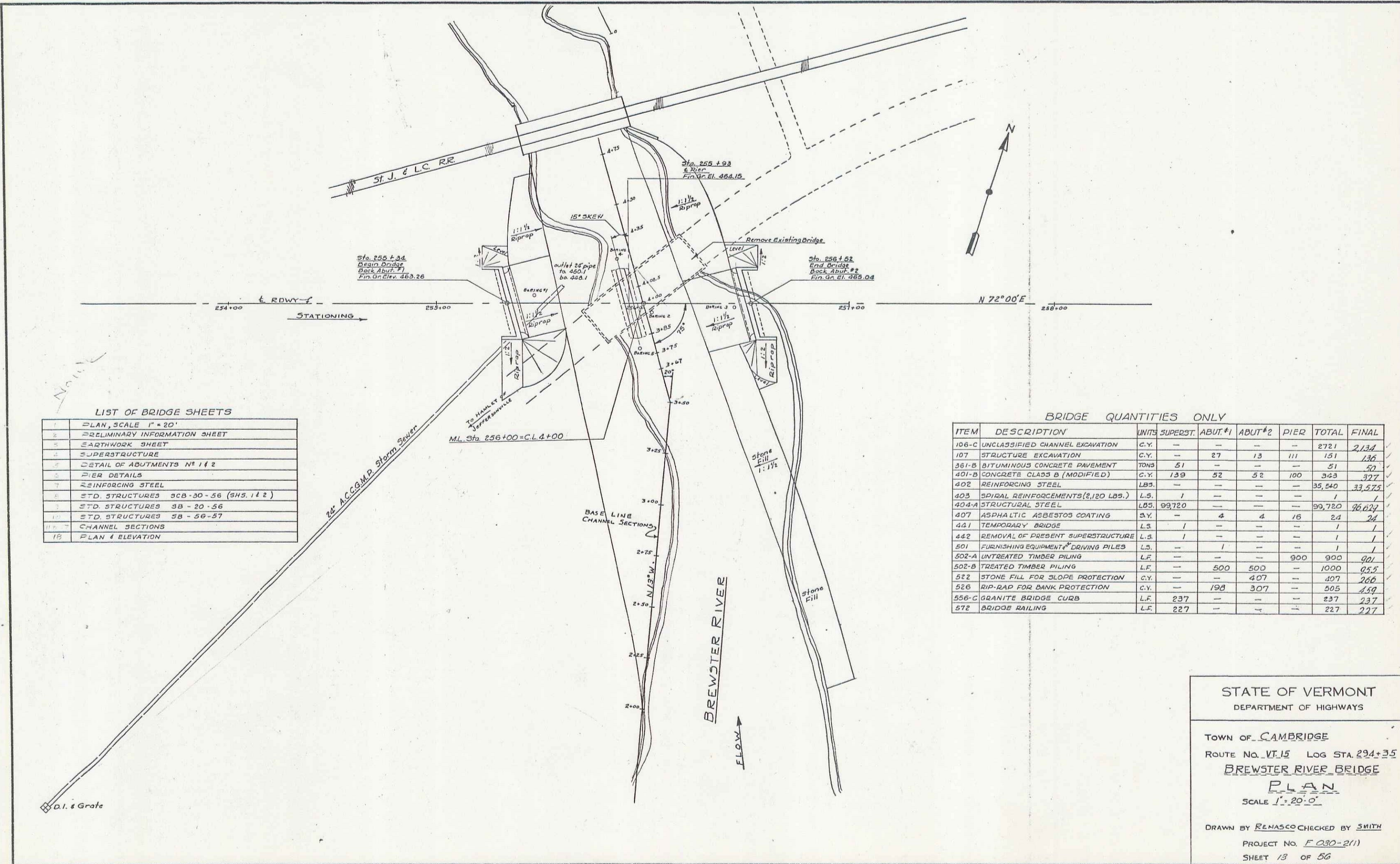
#8B JAMES A. & LUCY B. ROOT
 (5000 SQ. FT.) STA 260+66 - 261+60.2
 C.O.N.D. 10/22/58
 RECORDED: CAMBRIDGE-BK 43-PG 227-10/22/59

Approximate location 3/4" iron water
 pipe - shows arch of old road back
 to conc. crib.



CAMBRIDGE
 Proj. F No. 030-2(1)
 Sheet 11 of 56

4



LIST OF BRIDGE SHEETS

1	PLAN, SCALE 1" = 20'
2	PRELIMINARY INFORMATION SHEET
3	EARTHWORK SHEET
4	SUPERSTRUCTURE
5	DETAIL OF ABUTMENTS NO. 1 & 2
6	PIER DETAILS
7	REINFORCING STEEL
8	STD. STRUCTURES 3CB-30-56 (SHS. 142)
9	STD. STRUCTURES 3B-20-56
10	STD. STRUCTURES 5B-56-57
11	CHANNEL SECTIONS
12	PLAN & ELEVATION

BRIDGE QUANTITIES ONLY

ITEM	DESCRIPTION	UNITS	SUPERST.	ABUT.#1	ABUT.#2	PIER	TOTAL	FINAL
106-C	UNCLASSIFIED CHANNEL EXCAVATION	C.Y.	—	—	—	—	2721	2,134
107	STRUCTURE EXCAVATION	C.Y.	—	27	13	111	151	136
361-B	BITUMINOUS CONCRETE PAVEMENT	TONS	51	—	—	—	51	52
401-B	CONCRETE CLASS B (MODIFIED)	C.Y.	139	52	52	100	343	377
402	REINFORCING STEEL	LBS.	—	—	—	—	35,540	33,575
403	SPIRAL REINFORCEMENTS (2,120 LBS.)	L.S.	1	—	—	—	1	1
404-A	STRUCTURAL STEEL	LBS.	99,720	—	—	—	99,720	96,024
407	ASPHALTIC ASBESTOS COATING	S.Y.	—	4	4	16	24	24
441	TEMPORARY BRIDGE	L.S.	1	—	—	—	1	1
442	REMOVAL OF PRESENT SUPERSTRUCTURE	L.S.	1	—	—	—	1	1
501	FURNISHING EQUIPMENT & DRIVING PILES	L.S.	—	1	—	—	1	1
502-A	UNTREATED TIMBER PILING	L.F.	—	—	—	900	900	901
502-B	TREATED TIMBER PILING	L.F.	—	500	500	—	1000	955
522	STONE FILL FOR SLOPE PROTECTION	C.Y.	—	—	407	—	407	266
526	RIP-RAP FOR BANK PROTECTION	C.Y.	—	198	307	—	505	459
556-C	GRANITE BRIDGE CURB	L.F.	237	—	—	—	237	237
572	BRIDGE RAILING	L.F.	227	—	—	—	227	227

STATE OF VERMONT
DEPARTMENT OF HIGHWAYS

TOWN OF CAMBRIDGE
ROUTE NO. VI.15 LOG STA. 234+35
BREWSTER RIVER BRIDGE
PLAN
SCALE 1" = 20'-0"

DRAWN BY RENASCO CHECKED BY SMITH
PROJECT NO. F.030-2(1)
SHEET 13 OF 56

60