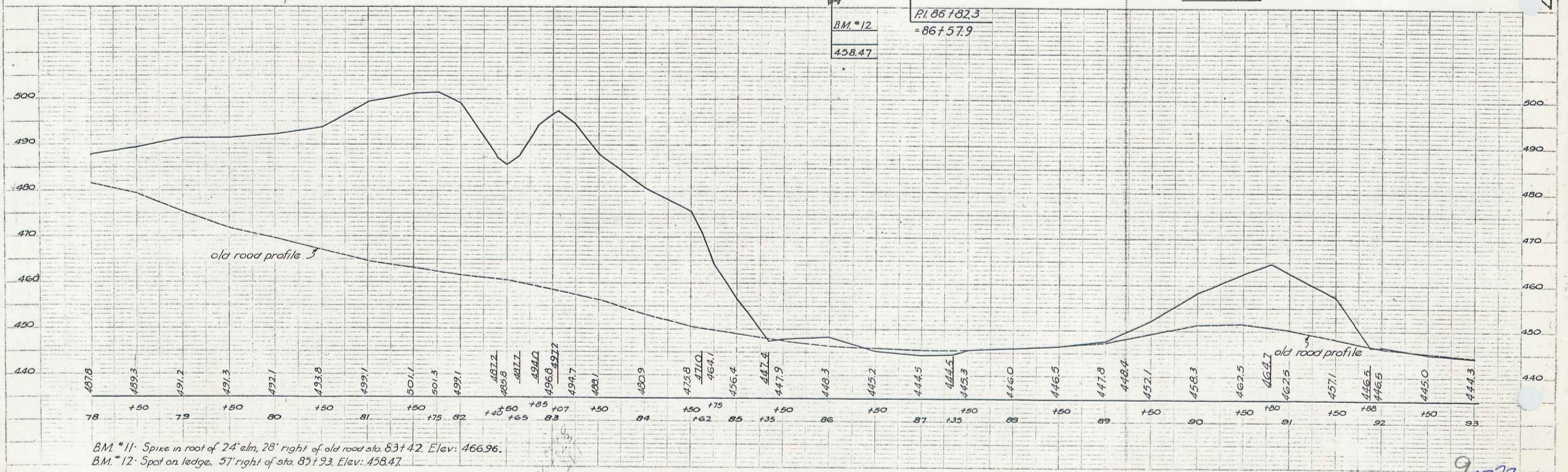
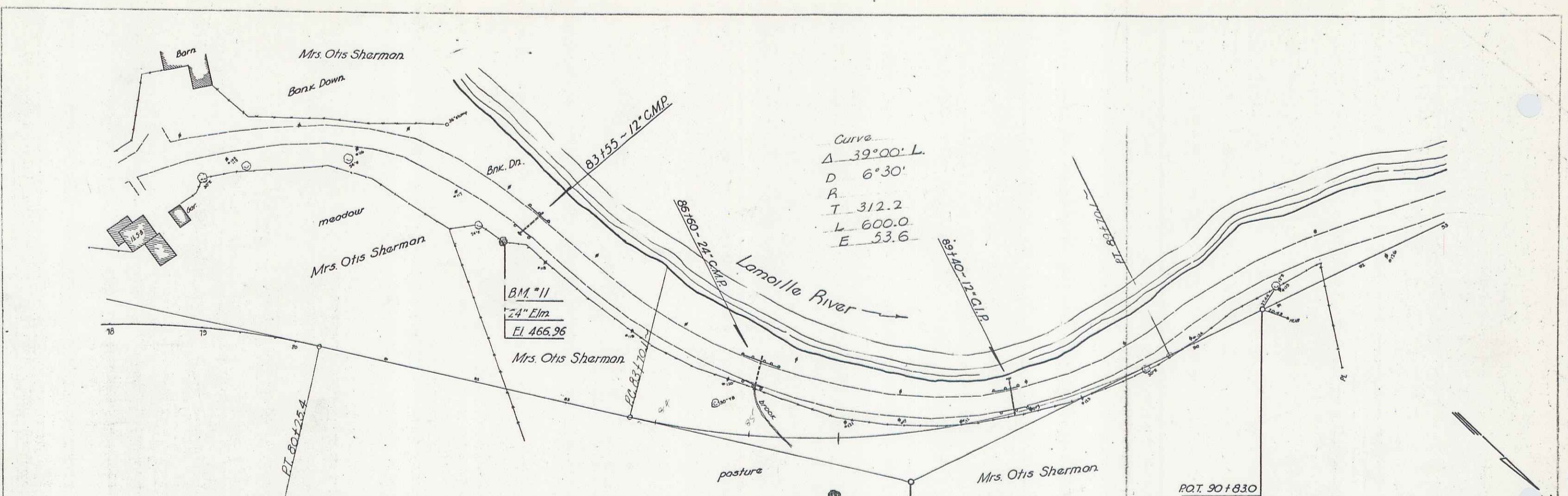


Lane R. Griffith
 Aug. 1937
 10'



BM #11: Spike in root of 24' elm, 28' right of old road sta. 83+42. Elev: 466.96.
 BM #12: Spot on ledge, 57' right of sta. 86+93. Elev: 458.47.

PLATE #1-PLA-PROF. 1/4" = 1' VERT. 1" = 100' HOR.
 18

90P33
 8