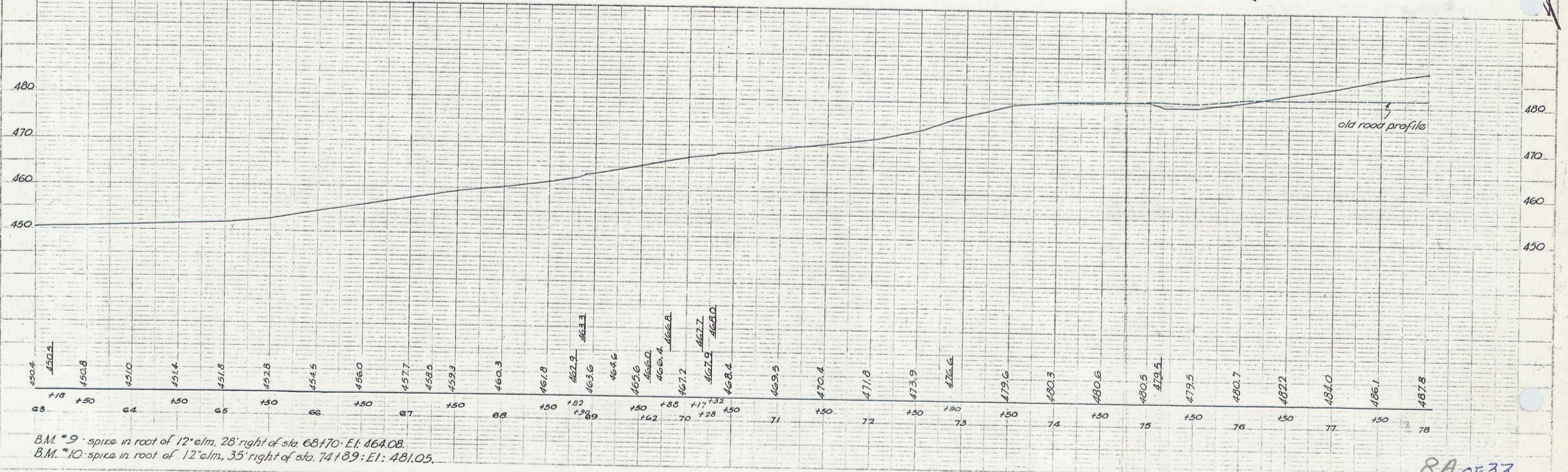
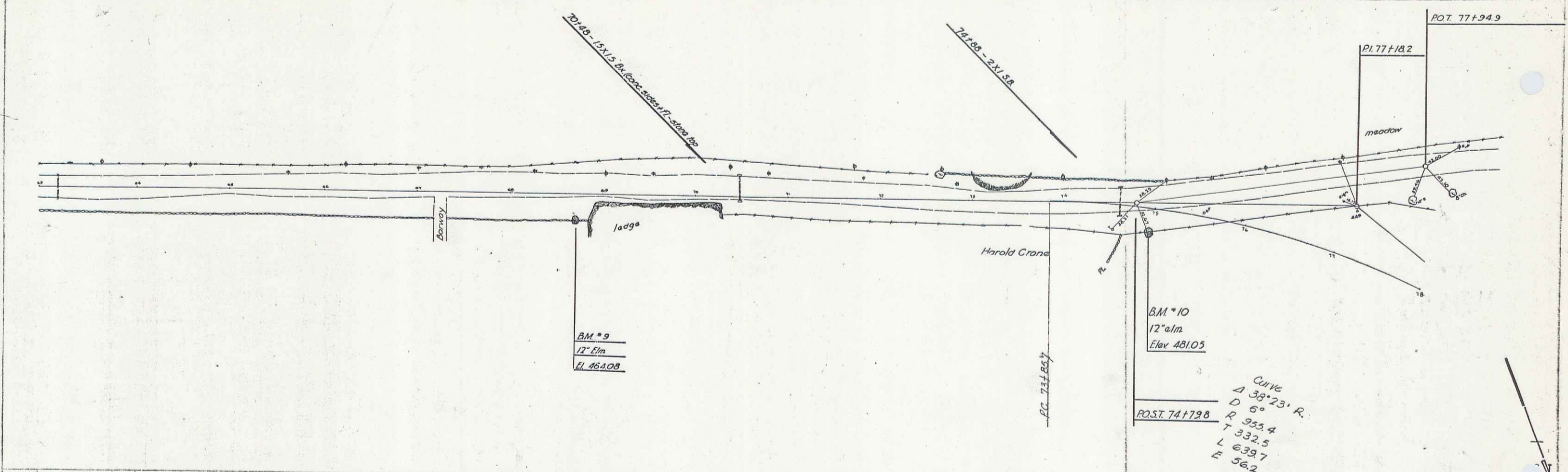


PLAN
 SHEET NO. 1
 DATE 1912
 DRAWN BY
 CHECKED BY
 APPROVED BY
 A. Griffiths
 Jan 1912



B.M. *9 - spike in root of 12" elm, 28' right of sta. 68+70. E.I. 464.08.
 B.M. *10 - spike in root of 12" elm, 35' right of sta. 74+89. E.I. 481.05.

B.M. *10
 12" elm
 Elev 481.05

POST. 74+79.8
 CURVE
 Δ 38° 23' R.
 D 6°
 R 955.4
 T 332.5
 L 639.7
 E 56.2

8A OF 33

7