

FED. ROAD STATE DIST. NO. 9 DIST. NO. 122-A 1937 4 35

NOTE:
Trees to be removed are those marked on the plans.
This work to be paid for as 'Cutting and Removing Trees.' Item 103

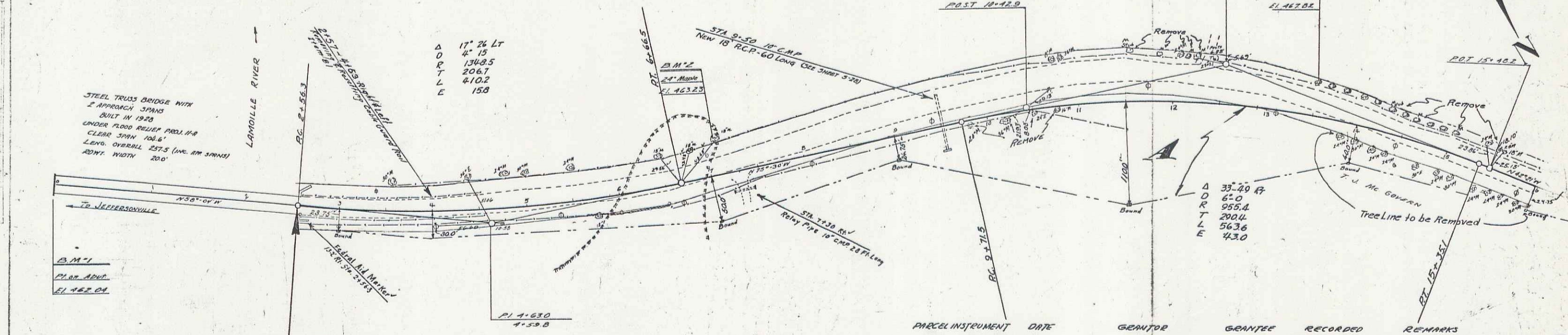
STEVENSON
1936

STEEL TRUSS BRIDGE WITH 2 APPROACH SPANS BUILT IN 1928 UNDER FLOOD RELIEF ACT. CLEAR SPAN 106.6' LONG OVERALL 257.5' (INC. 2M SPANS) ROAD WIDTH 20'

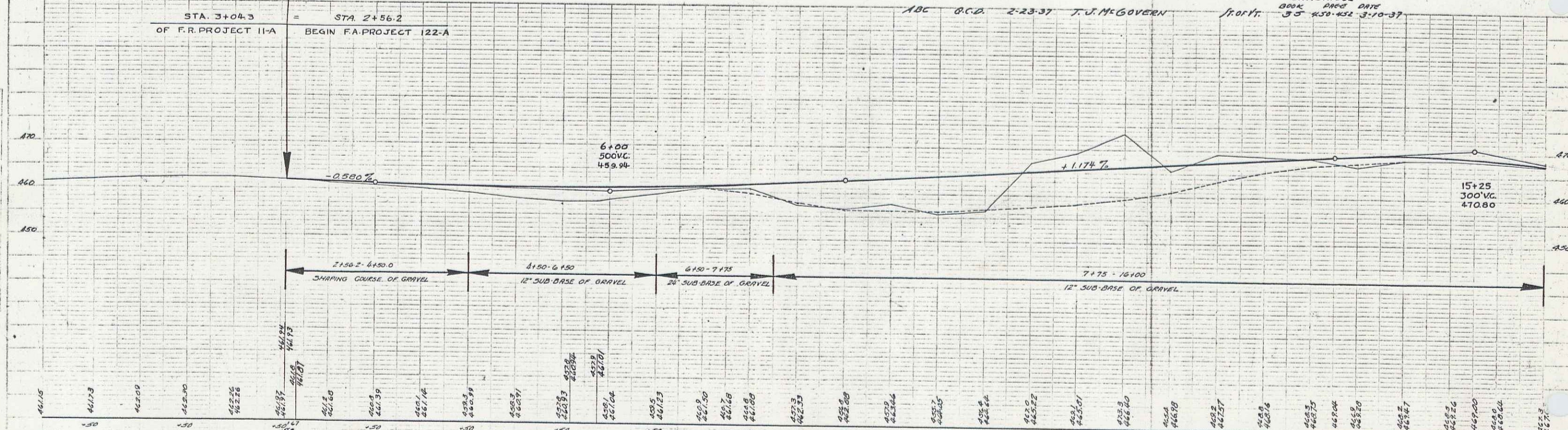
B.M. 1
PL. OR. ADJ.
ELEV. 462.04

Δ 17° 24' LT
D 4' 15"
R 1342.5
T 206.7
L 410.2
E 15.8

Δ 33° 20' RT
D 6' 0"
R 955.4
T 200.4
L 563.6
E 43.0



PARCEL INSTRUMENT	DATE	GRANTOR	GRANTEE	RECORDED	REMARKS
ABC	D.C.D.	2-23-37	T. J. McGOVERN	FRONT	BOOK PAGE DATE 35 450-452 3-10-37



STATION	ELEVATION
4+15	461.5
4+20	461.8
4+25	462.0
4+30	462.2
4+35	462.4
4+40	462.6
4+45	462.8
4+50	463.0
4+55	463.2
4+60	463.4
4+65	463.6
4+70	463.8
4+75	464.0
4+80	464.2
4+85	464.4
4+90	464.6
4+95	464.8
5+00	465.0
5+05	465.2
5+10	465.4
5+15	465.6
5+20	465.8
5+25	466.0
5+30	466.2
5+35	466.4
5+40	466.6
5+45	466.8
5+50	467.0
5+55	467.2
5+60	467.4
5+65	467.6
5+70	467.8
5+75	468.0
5+80	468.2
5+85	468.4
5+90	468.6
5+95	468.8
6+00	469.0
6+05	469.2
6+10	469.4
6+15	469.6
6+20	469.8
6+25	470.0
6+30	470.2
6+35	470.4
6+40	470.6
6+45	470.8
6+50	471.0
6+55	471.2
6+60	471.4
6+65	471.6
6+70	471.8
6+75	472.0
6+80	472.2
6+85	472.4
6+90	472.6
6+95	472.8
7+00	473.0
7+05	473.2
7+10	473.4
7+15	473.6
7+20	473.8
7+25	474.0
7+30	474.2
7+35	474.4
7+40	474.6
7+45	474.8
7+50	475.0
7+55	475.2
7+60	475.4
7+65	475.6
7+70	475.8
7+75	476.0
7+80	476.2
7+85	476.4
7+90	476.6
7+95	476.8
8+00	477.0
8+05	477.2
8+10	477.4
8+15	477.6
8+20	477.8
8+25	478.0
8+30	478.2
8+35	478.4
8+40	478.6
8+45	478.8
8+50	479.0
8+55	479.2
8+60	479.4
8+65	479.6
8+70	479.8
8+75	480.0
8+80	480.2
8+85	480.4
8+90	480.6
8+95	480.8
9+00	481.0
9+05	481.2
9+10	481.4
9+15	481.6
9+20	481.8
9+25	482.0
9+30	482.2
9+35	482.4
9+40	482.6
9+45	482.8
9+50	483.0
9+55	483.2
9+60	483.4
9+65	483.6
9+70	483.8
9+75	484.0
9+80	484.2
9+85	484.4
9+90	484.6
9+95	484.8
10+00	485.0
10+05	485.2
10+10	485.4
10+15	485.6
10+20	485.8
10+25	486.0
10+30	486.2
10+35	486.4
10+40	486.6
10+45	486.8
10+50	487.0
10+55	487.2
10+60	487.4
10+65	487.6
10+70	487.8
10+75	488.0
10+80	488.2
10+85	488.4
10+90	488.6
10+95	488.8
11+00	489.0
11+05	489.2
11+10	489.4
11+15	489.6
11+20	489.8
11+25	490.0
11+30	490.2
11+35	490.4
11+40	490.6
11+45	490.8
11+50	491.0
11+55	491.2
11+60	491.4
11+65	491.6
11+70	491.8
11+75	492.0
11+80	492.2
11+85	492.4
11+90	492.6
11+95	492.8
12+00	493.0
12+05	493.2
12+10	493.4
12+15	493.6
12+20	493.8
12+25	494.0
12+30	494.2
12+35	494.4
12+40	494.6
12+45	494.8
12+50	495.0
12+55	495.2
12+60	495.4
12+65	495.6
12+70	495.8
12+75	496.0
12+80	496.2
12+85	496.4
12+90	496.6
12+95	496.8
13+00	497.0
13+05	497.2
13+10	497.4
13+15	497.6
13+20	497.8
13+25	498.0
13+30	498.2
13+35	498.4
13+40	498.6
13+45	498.8
13+50	499.0
13+55	499.2
13+60	499.4
13+65	499.6
13+70	499.8
13+75	500.0
13+80	500.2
13+85	500.4
13+90	500.6
13+95	500.8
14+00	501.0
14+05	501.2
14+10	501.4
14+15	501.6
14+20	501.8
14+25	502.0
14+30	502.2
14+35	502.4
14+40	502.6
14+45	502.8
14+50	503.0
14+55	503.2
14+60	503.4
14+65	503.6
14+70	503.8
14+75	504.0
14+80	504.2
14+85	504.4
14+90	504.6
14+95	504.8
15+00	505.0
15+05	505.2
15+10	505.4
15+15	505.6
15+20	505.8
15+25	506.0

B.M. 1 RT CORNER OF ABUT. 11' AT STA. 0+00 ELEV. 462.04
B.M. 2 SPIKE IN ROOT OF 24" MAPLE 34' LT STA. 7+10 ELEV. 463.23
B.M. 3 33' LT STA. 15+50 ELEV. 467.82

SHEET 4 OF 35

2