

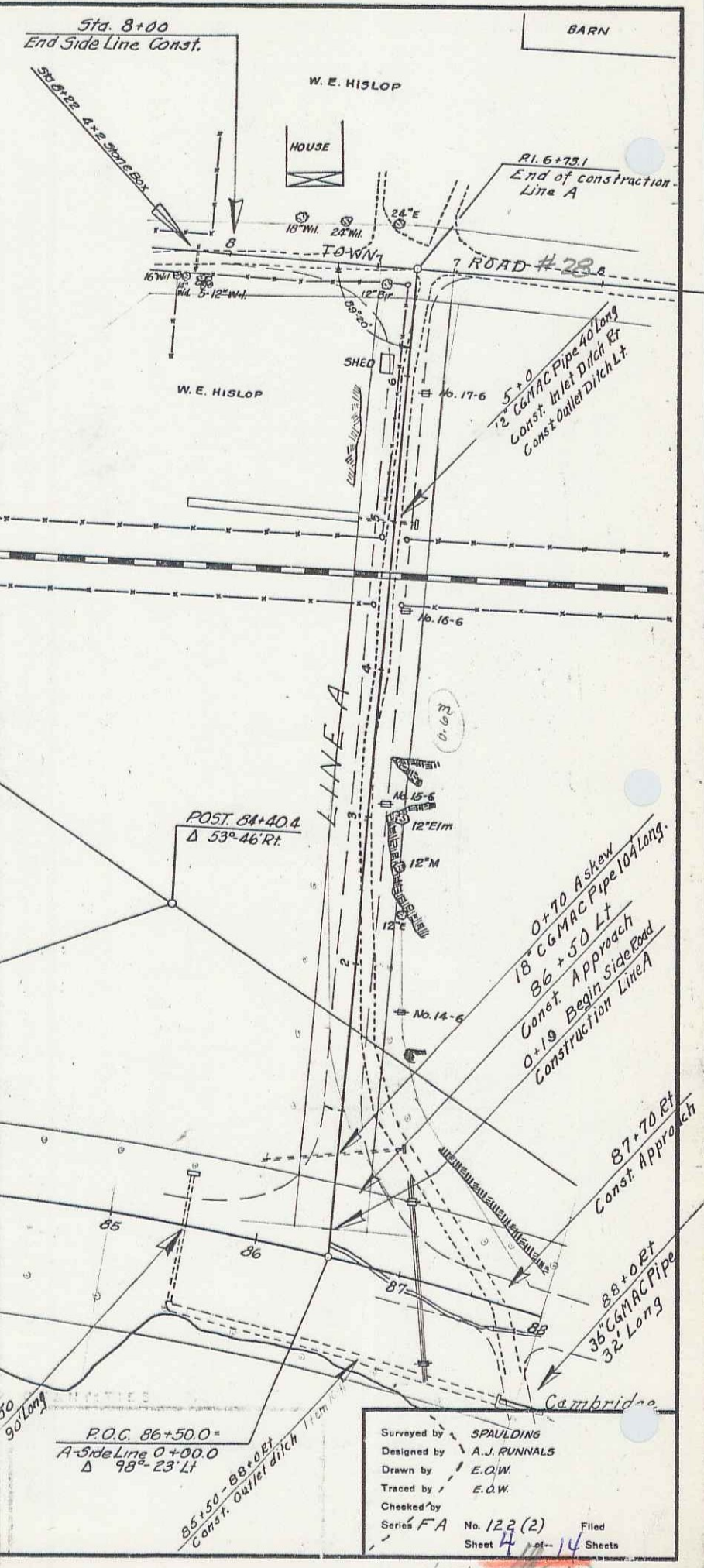
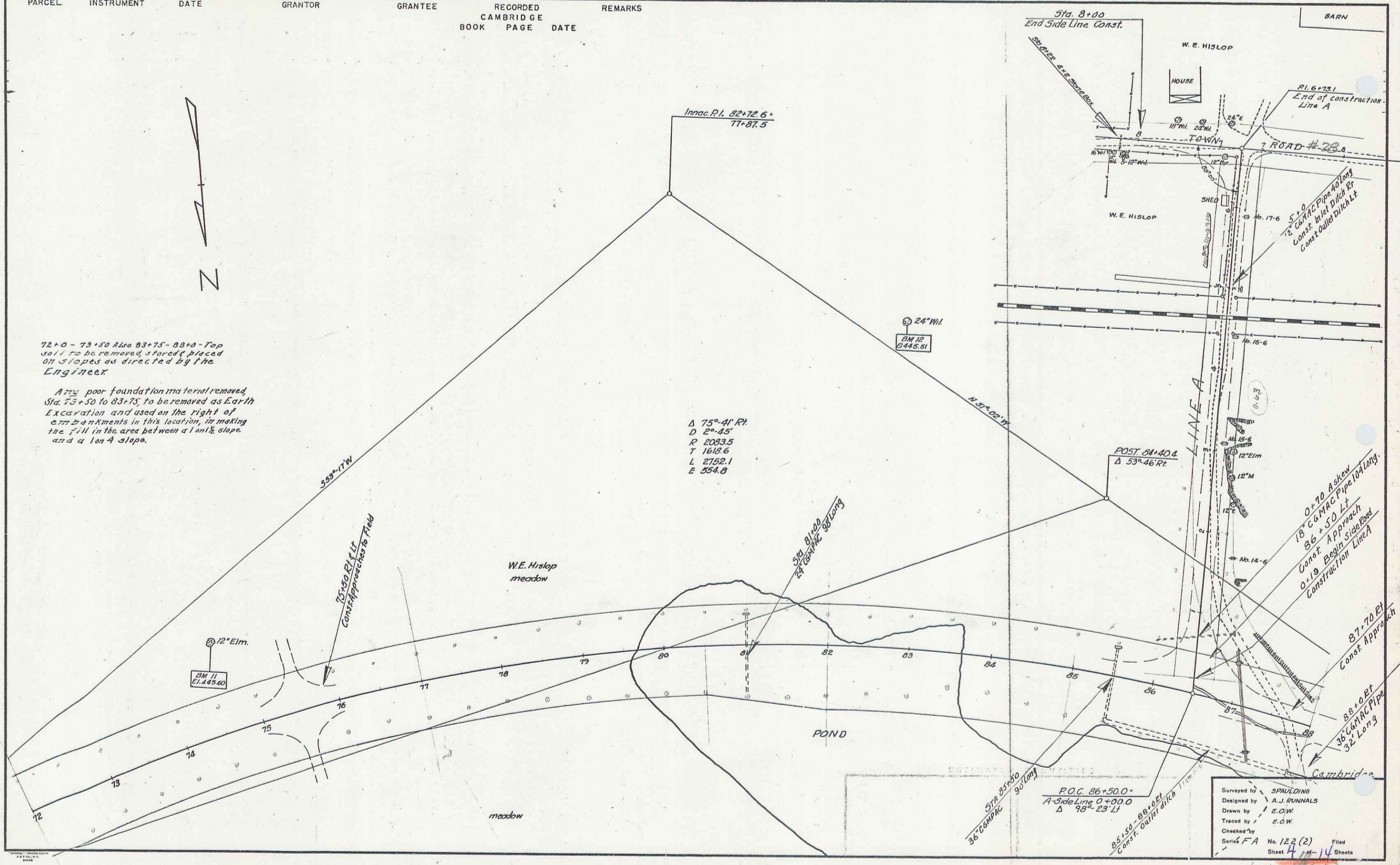
PARCEL	INSTRUMENT	DATE	GRANTOR	GRANTEE	RECORDED CAMBRIDGE	REMARKS
					BOOK PAGE DATE	



72+0 - 73+50 Also 83+75 - 88+0 - Top soil to be removed, stored placed on slopes as directed by the Engineer

At poor foundation material removed, Sta. 75+50 to 83+75, to be removed as Earth Excavation and used on the right of embankments in this location, in making the fill in the area between a 1 on 1/2 slope and a 1 on 4 slope.

Δ 75°-41' RT  
D 2°-45'  
R 2083.5  
T 1618.6  
L 2752.1  
E 554.8



Surveyed by SPALDING  
Designed by A.J. RUNNALS  
Drawn by E.O.W.  
Treed by E.O.W.  
Checked by  
Series FA No. 122 (2) Filed  
Sheet 4 of 14 Sheets

LAYOUT 4