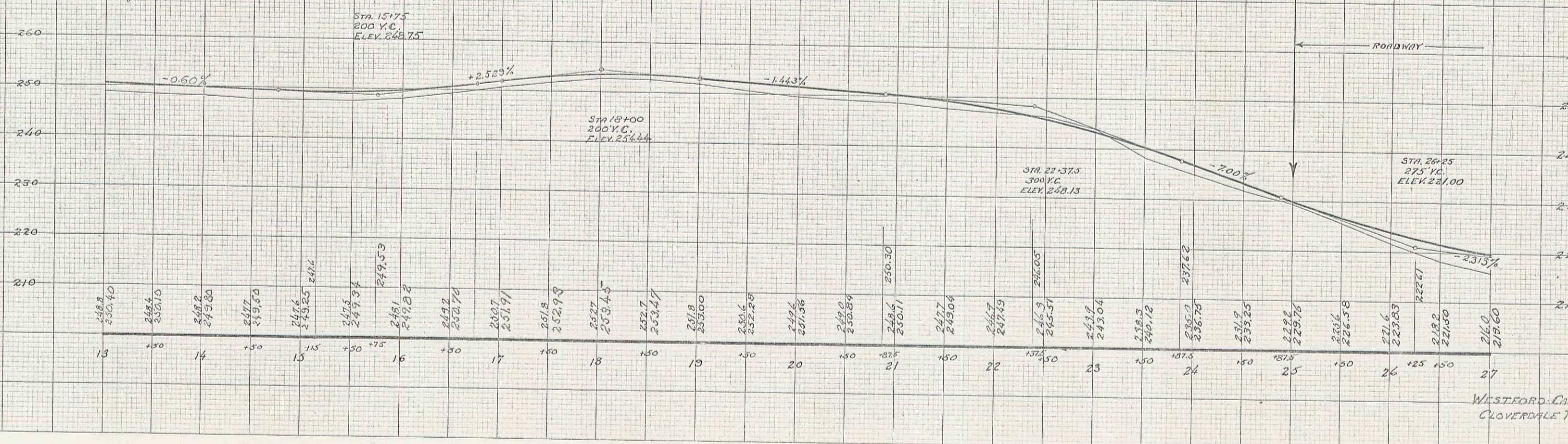
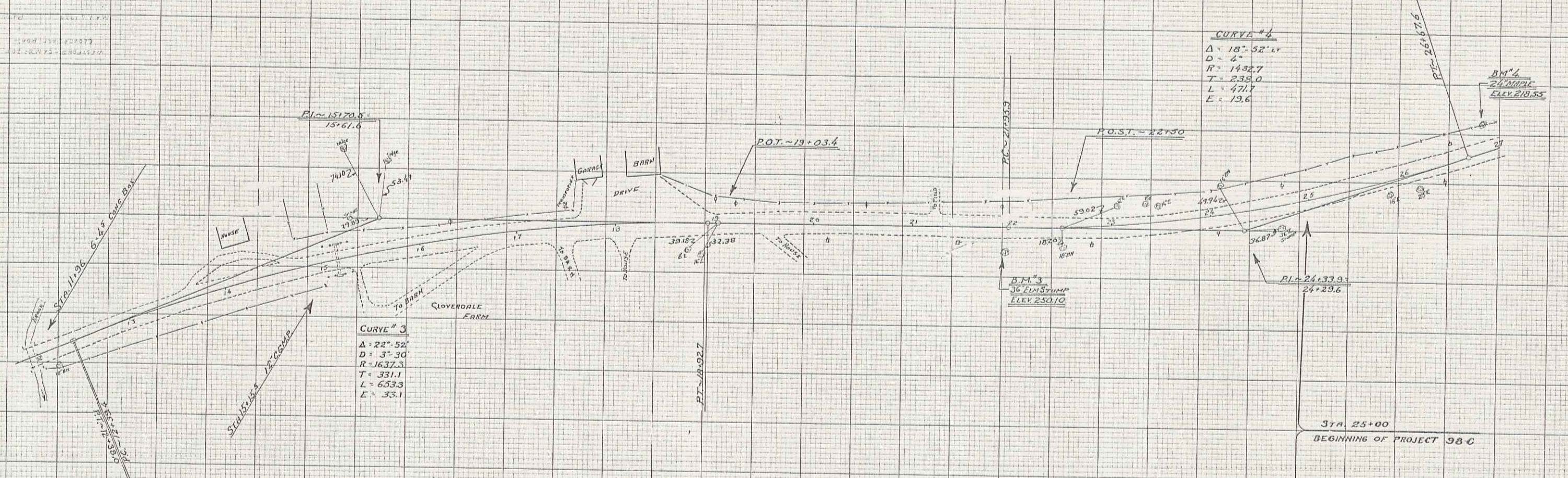


Town: Westford-Cambridge
 Project No. 15 ST Special
 Date: 5/17/1930
 Rte. VT 15
 Pin# 00R288

Westford MP 0.00 - 2.82
 Cambridge MP 0.00 - 1.18

RIGHT-OF-WAY DIVISION
 TOWN FILE
 PERPETUAL
 Town of VT 15
 (To Be Returned To B.O.W. Division)

WESTFORD-CAMBRIDGE
 CLOYERDALE ROAD
 VT 15



STANDARD CROSS SECTION 10 X 10
 HUFFEL & EBER CO. - NEW YORK

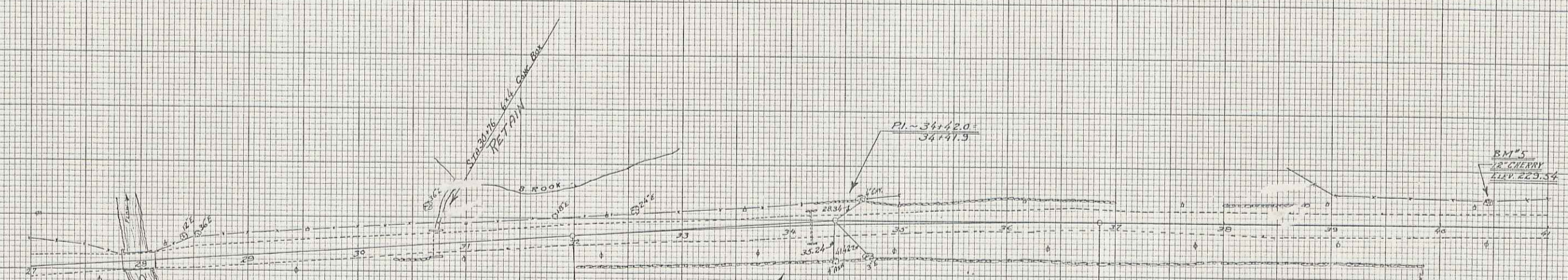
MADE IN U.S.A.

STANDARD CROSS SECTION 10 X 10
 HUFFEL & EBER CO. - NEW YORK

MADE IN U.S.A.

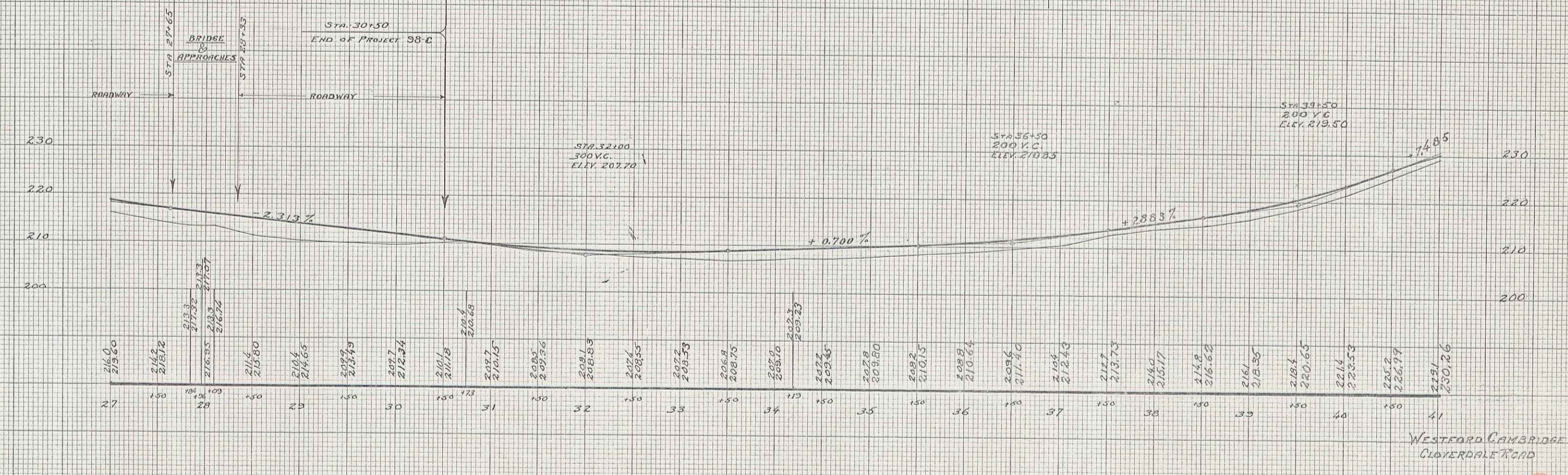
WESTFORD-CAMBRIDGE
 CLOVERDALE ROAD

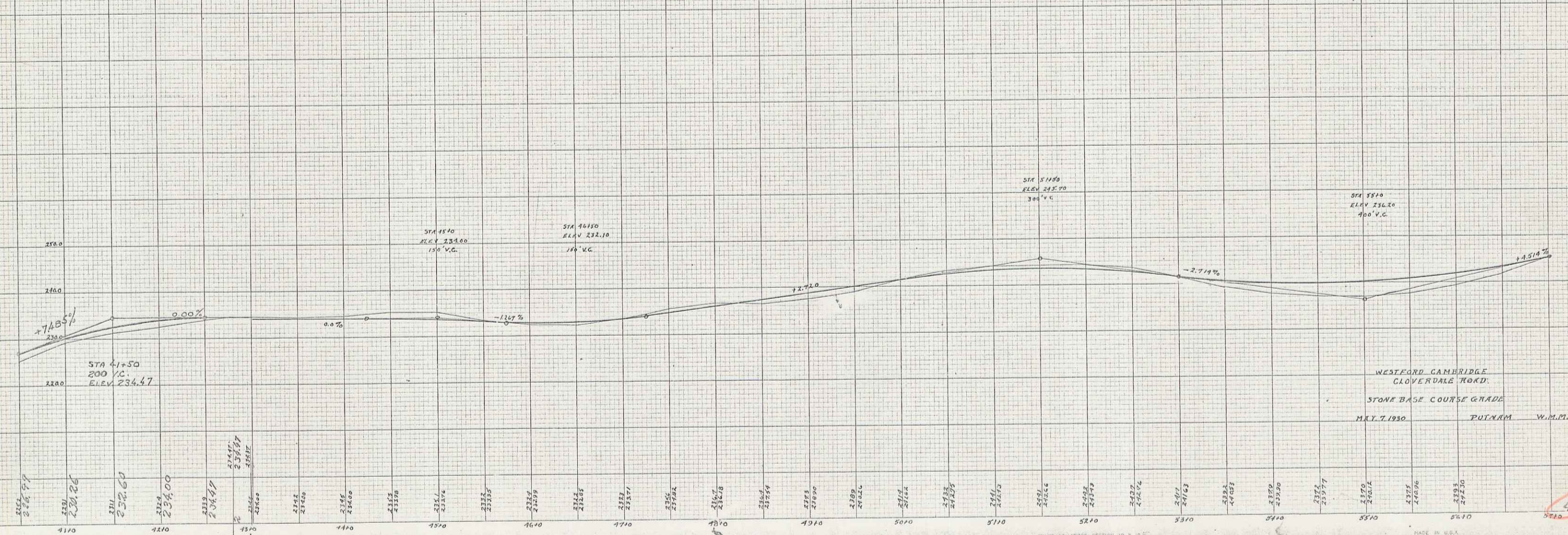
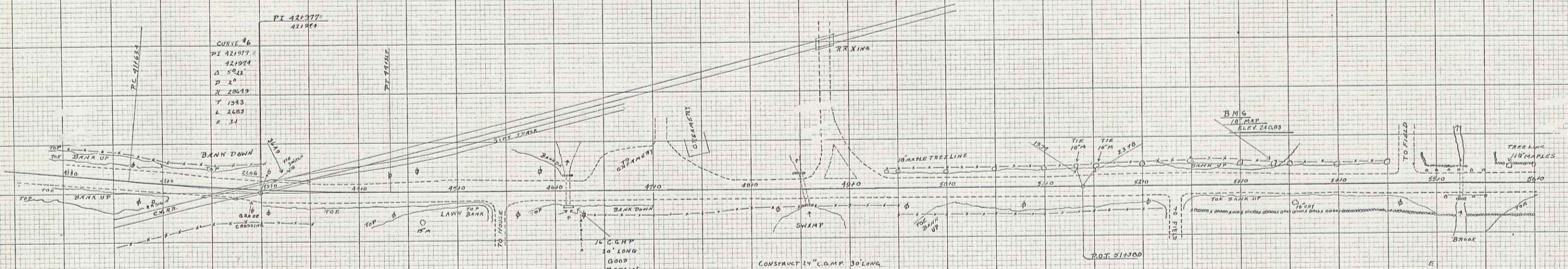
2



CURVE #5

Δ	3° 33' 41"
D	0' 45"
R	7639.5
T	263.4
L	486.7
E	5.9





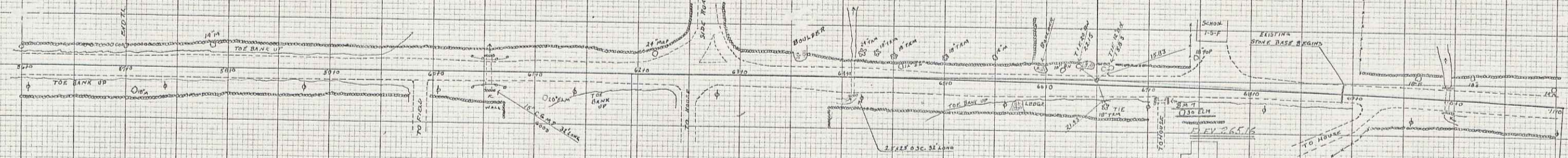
STANDARD CROSS SECTION 10' X 10' REINFORCED CONCRETE - NEW YORK

STANDARD CROSS SECTION 10' X 10' REINFORCED CONCRETE - NEW YORK

MADE IN U.S.A.

WESTFORD CAMBRIDGE CLOVERDALE ROAD.
 STONE BASE COURSE GRADE
 MAY 7, 1930 PUTNAM W.M.M.

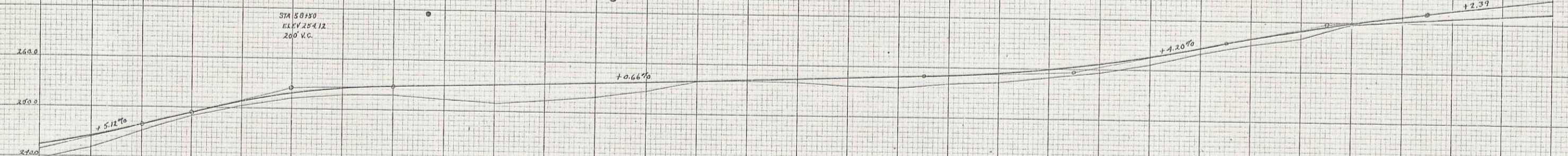
4



CURVE #7
 A 2'-17" RT
 D 0'51"
 R 22.2003
 T 4'14.7
 L 3'12.3
 E 4.6

STA 66728
 ELEV 259.2
 300 V.C.

STA 66770
 ELEV 262.74
 200 V.C.



WESTFORD-CAMBRIDGE
 CLOVERDALE ROAD
 STONE BASE COURSE GRAP
 MAY 7-12-30 PUTMAN

E.H.S.

STANDARD CROSS SECTION 10 X 10
 KUEPPEL & EBER - NEW YORK

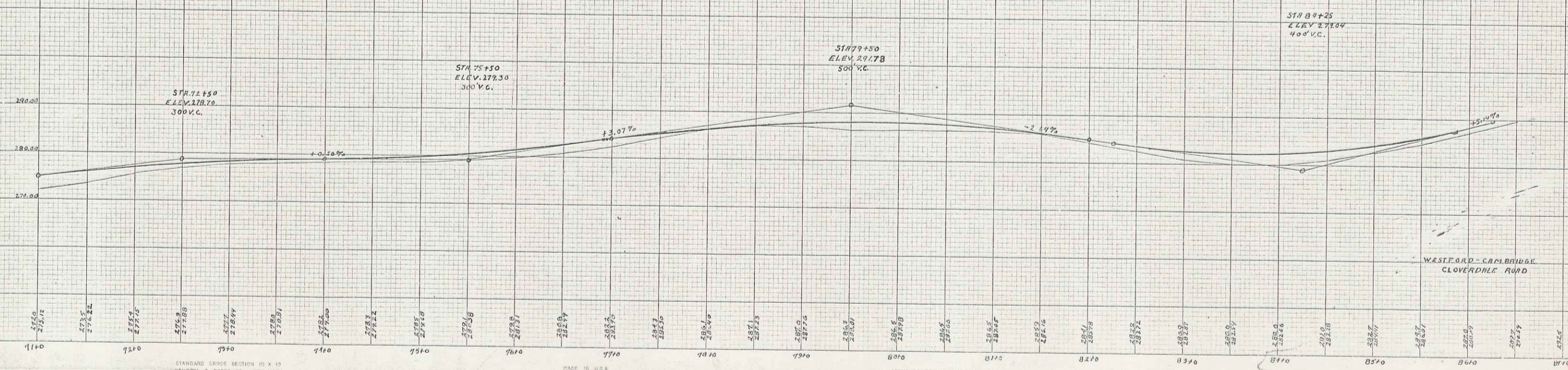
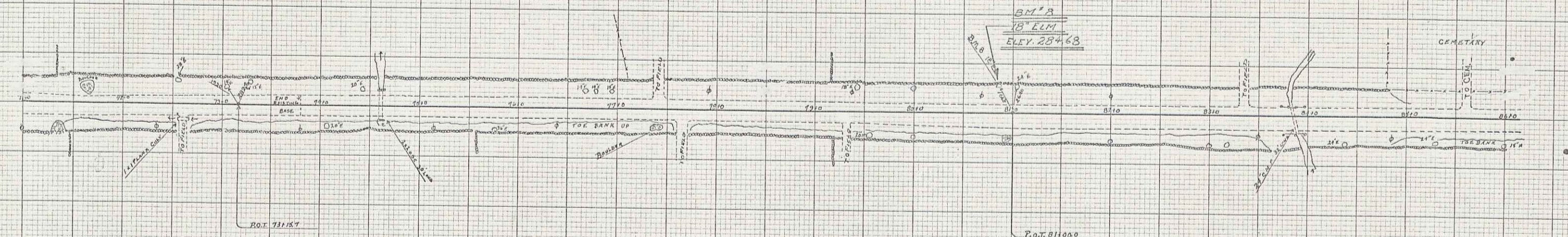
MADE IN U.S.A.

STANDARD CROSS SECTION 10 X 10
 KUEPPEL & EBER - NEW YORK

MADE IN U.S.A.

STANDARD CROSS SECTION 10 X 10
 KUEPPEL & EBER - NEW YORK

5



STANDARD CROSS SECTION 10 x 13
 HENRY A. FISHER CO. - NEW YORK

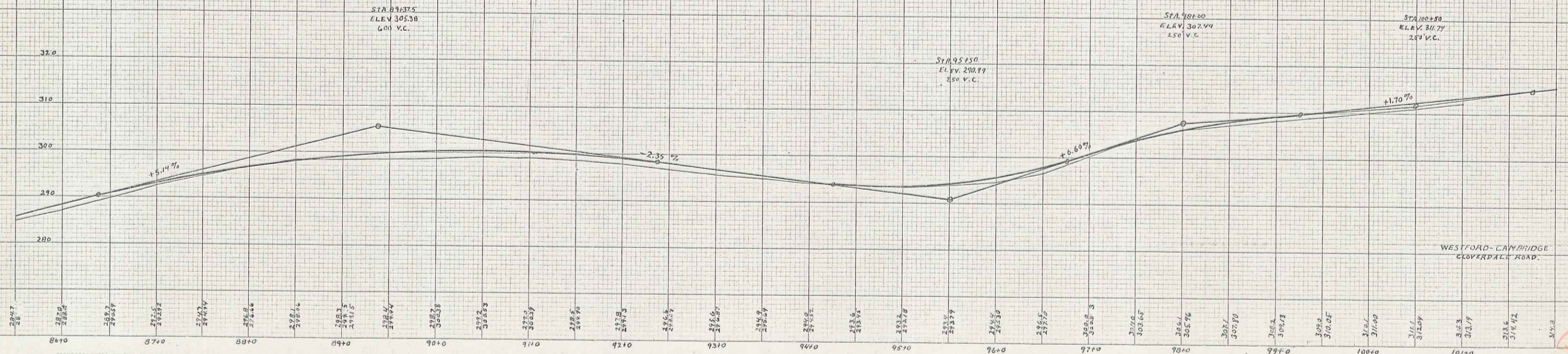
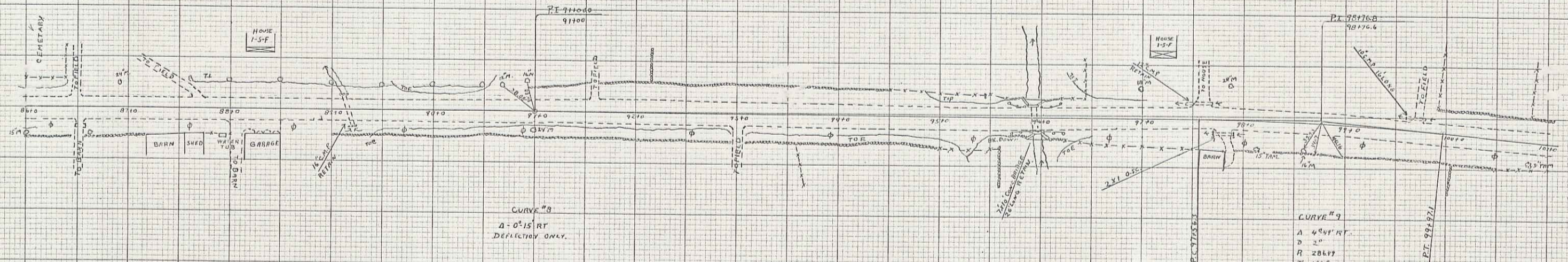
MADE IN U.S.A.

STANDARD CROSS SECTION 10 x 13
 HENRY A. FISHER CO. - NEW YORK

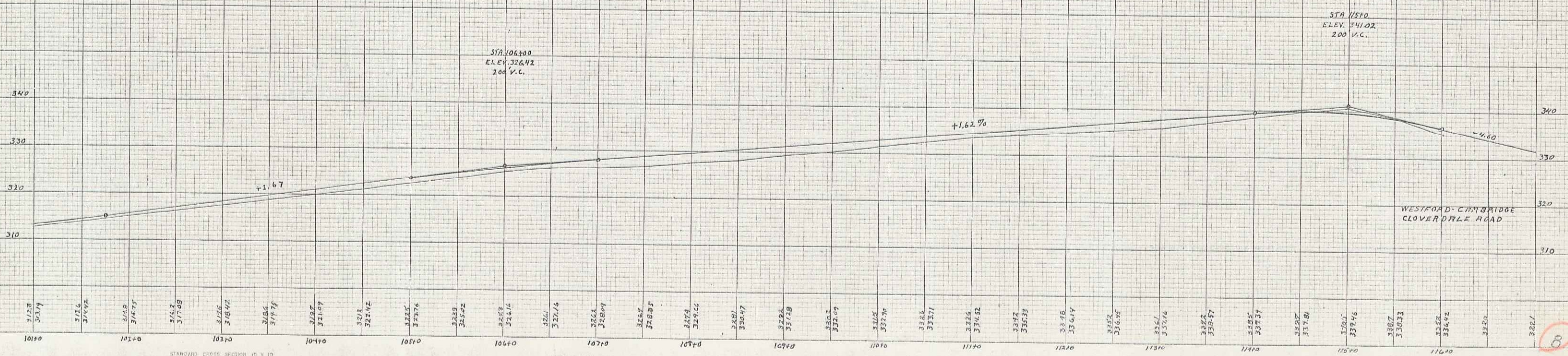
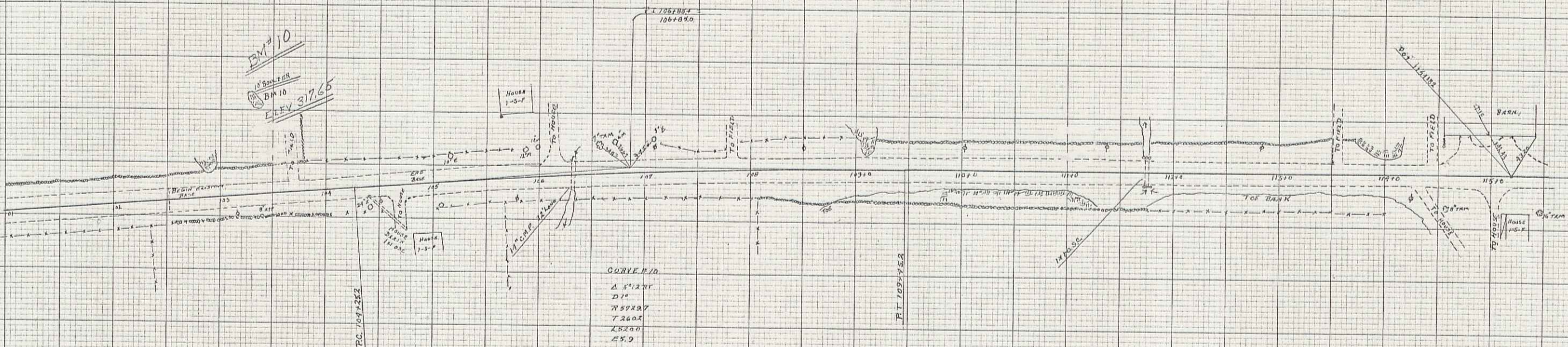
MADE IN U.S.A.

6

6



STANDARD CROSS SECTION 10 X 10
 KEUFFEL & ESSER CO. - NEW YORK
 MADE IN U.S.A.

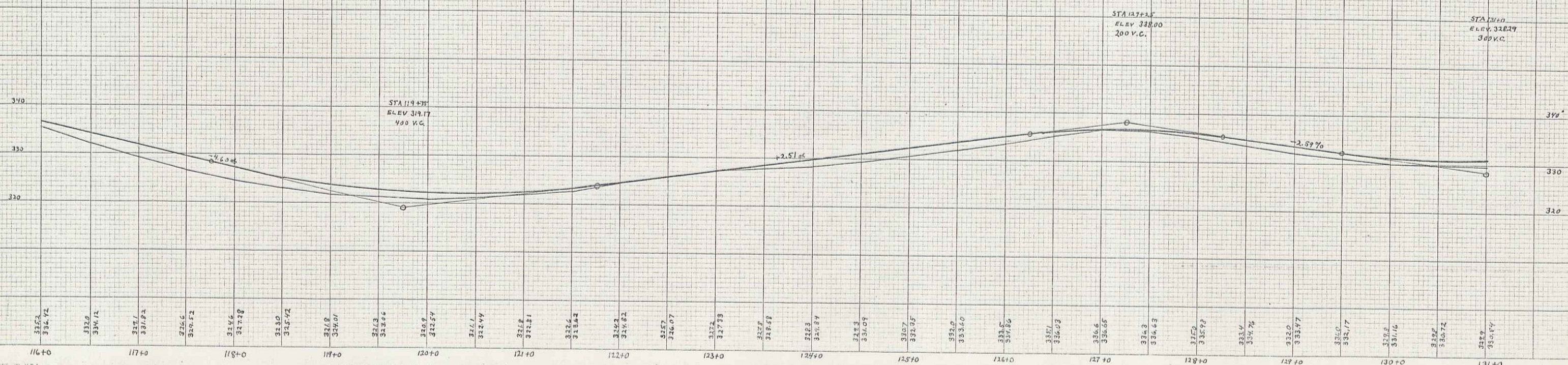
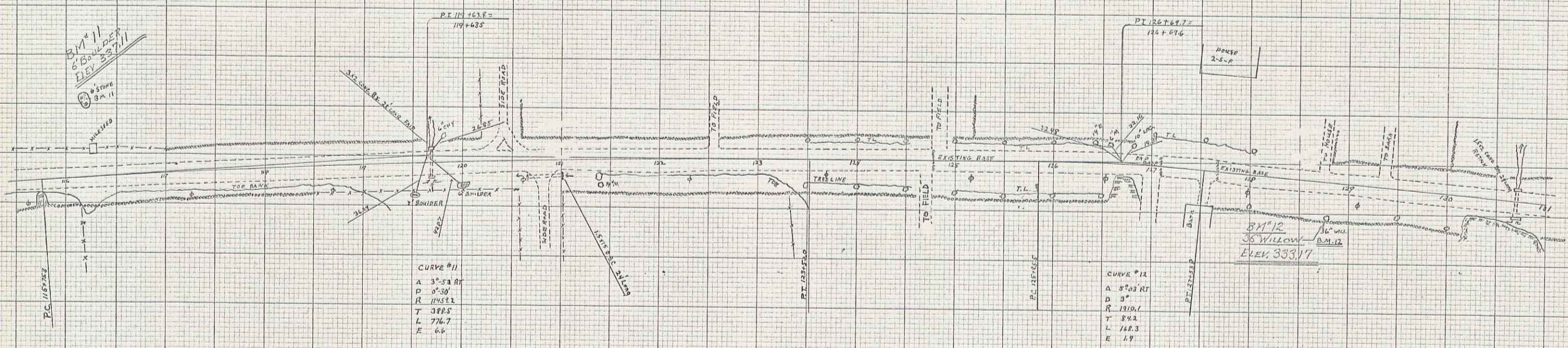


STANDARD CROSS SECTION 10 x 10
 KIEFFEL & ESSER CO. - NEW YORK

MADE IN U.S.A.

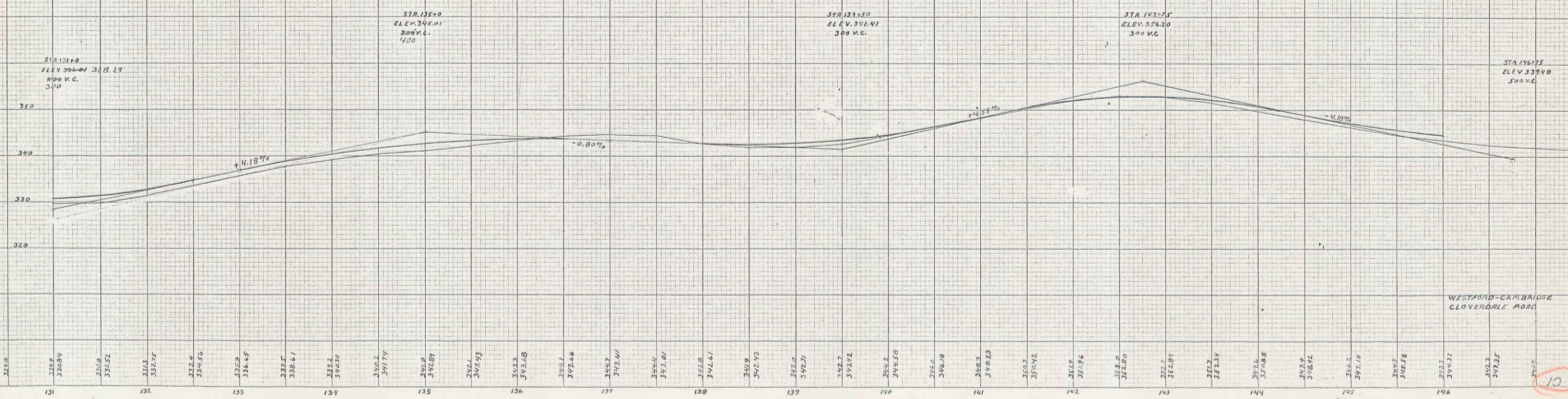
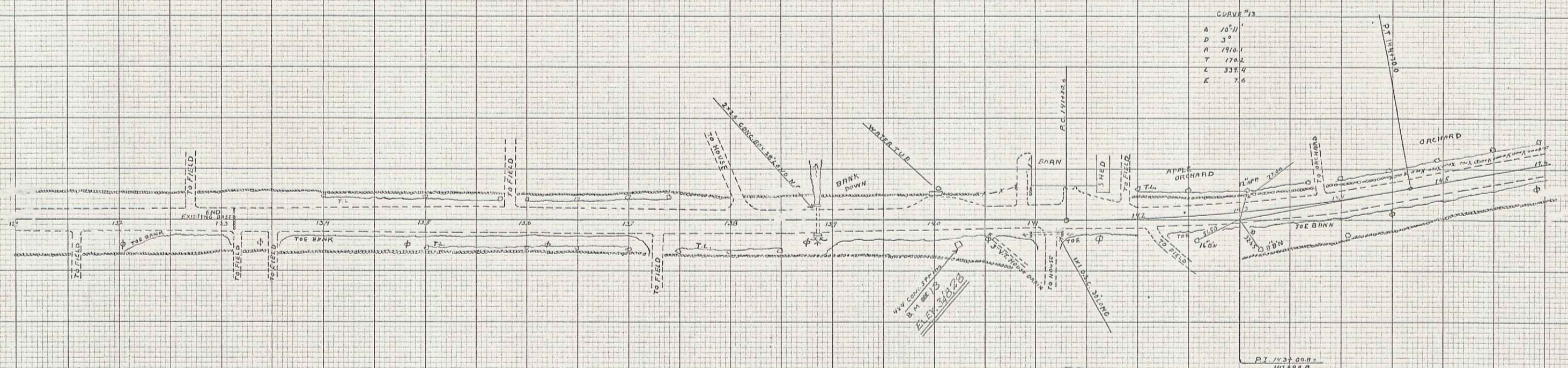
STANDARD CROSS SECTION 10 x 10
 KIEFFEL & ESSER CO. - NEW YORK

MADE IN U.S.A.



MADE IN U.S.A. STANDARD CROSS SECTION 10' x 10' MADE IN U.S.A. STANDARD CROSS SECTION 10' x 10' MADE IN U.S.A.

9



STANDARD CROSS SECTION 10 X 10
 HUFFEL & ESSER CO. - NEW YORK

MADE IN U.S.A.

STANDARD CROSS SECTION 10 X 10
 HUFFEL & ESSER CO. - NEW YORK

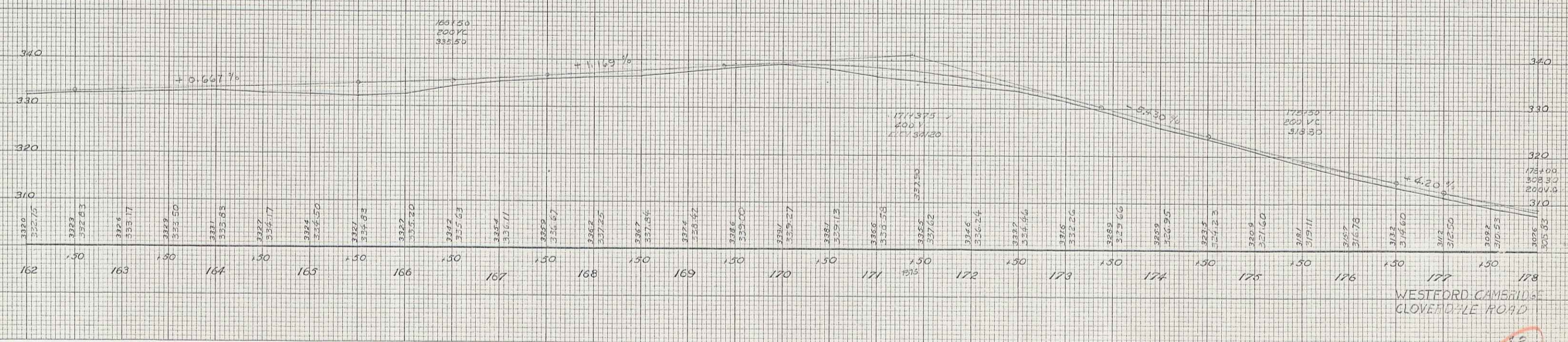
MADE IN U.S.A.

STANDARD CROSS SECTION 10 X 10
 HUFFEL & ESSER CO. - NEW YORK

MADE IN U.S.A.

WESTFORD-CAMBRIDGE
 CLOVERDALE ROAD

10



WESTFORD CAMERON
CLOVERDALE ROAD

16

MADE IN U.S.A.

STANDARD CROSS SECTION 10 X 10
KEUFFEL & ESSER CO. - NEW YORK

MADE IN U.S.A.

STANDARD CROSS SECTION 10 X 10
KEUFFEL & ESSER CO. - NEW YORK

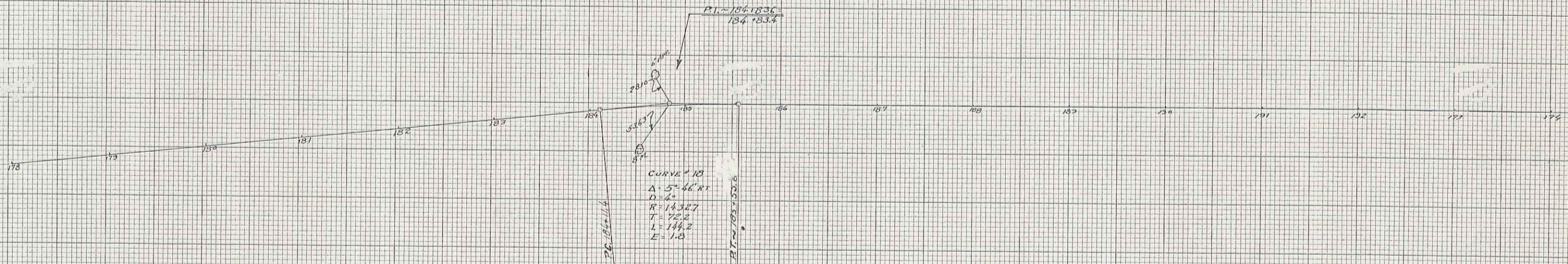
MADE IN U.S.A.

STANDARD CROSS SECTION 10 X 10
KEUFFEL & ESSER CO. - NEW YORK

MADE IN U.S.A.

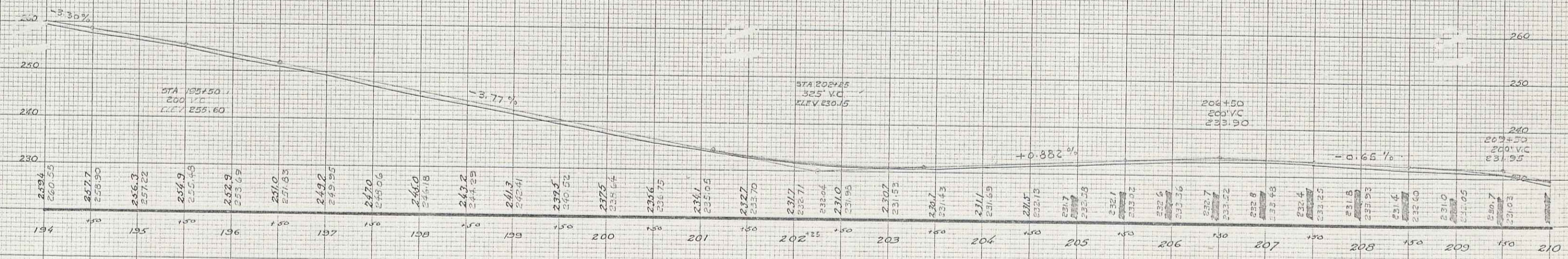
STANDARD CROSS SECTION 10 X 10
KEUFFEL & ESSER CO. - NEW YORK

MADE IN U.S.A.



WESTFORD-CAMBRIDGE
CLOVERDALE ROAD

13



STANDARD CROSS SECTION NO. 10
 KEUFFEL & ESSER CO. - NEW YORK

MADE IN U. S. A.

STANDARD CROSS SECTION NO. 10
 KEUFFEL & ESSER CO. - NEW YORK

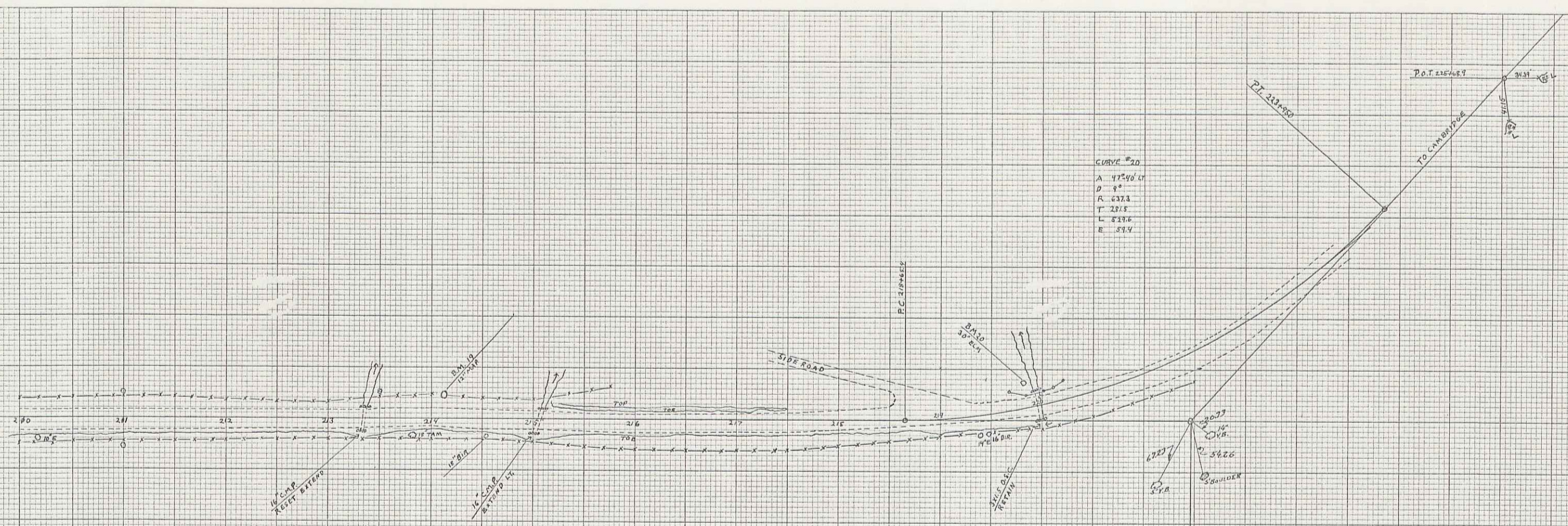
MADE IN U. S. A.

STANDARD CROSS SECTION NO. 10
 KEUFFEL & ESSER CO. - NEW YORK

WESTFORD-CAMBRIDGE
 CLOVERDALE ROAD

14

14



15