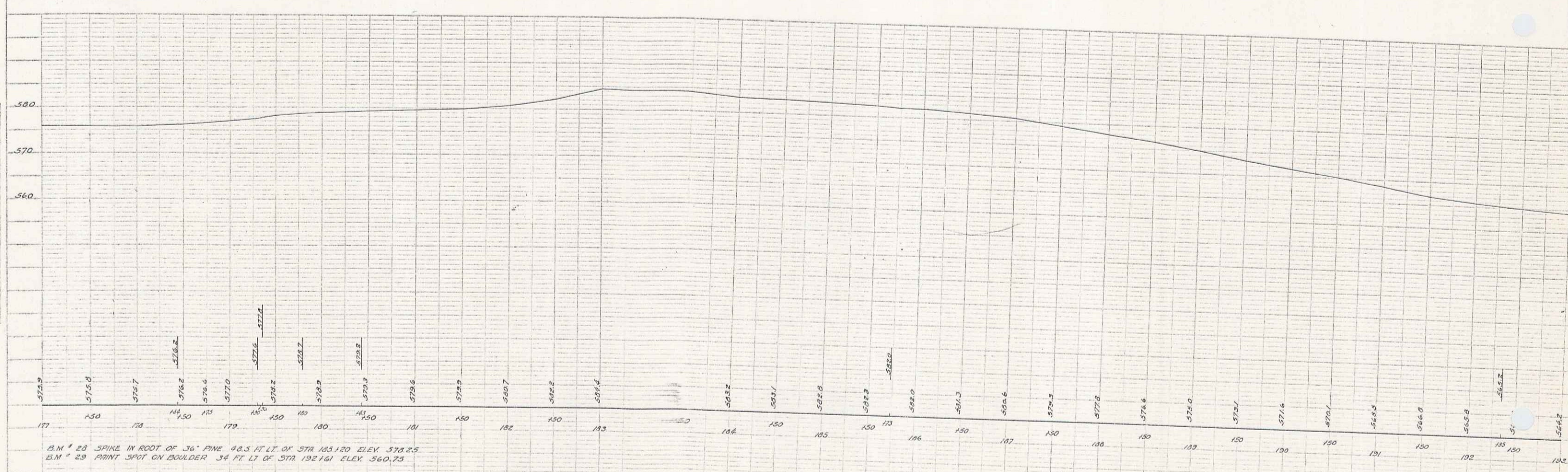
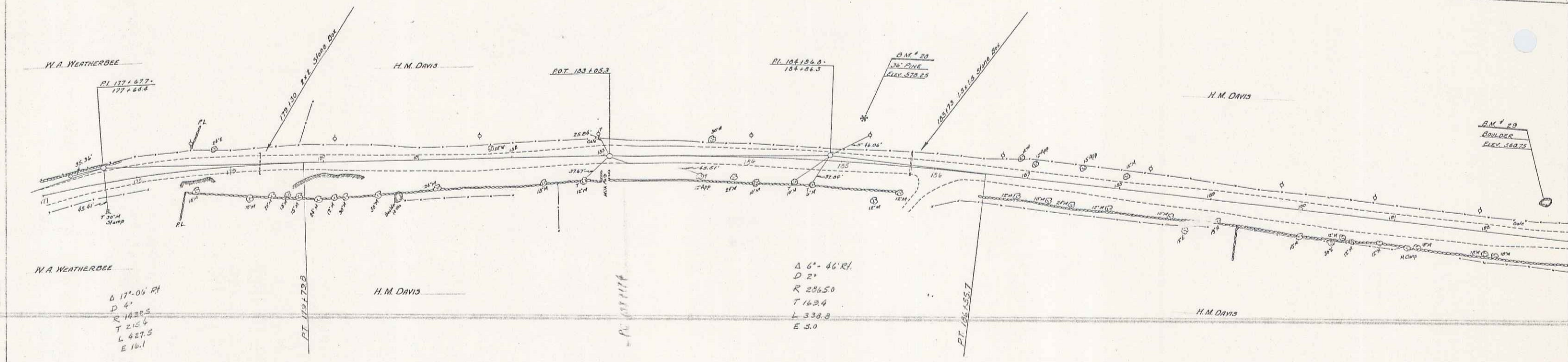


FED. ROAD DIST. NO.	STATE	FED. AID PROJ. NO.	FISCAL YEAR
8	VT		



B.M. # 28 SPIKE IN ROOT OF 36" PINE 48.3 FT LT OF STA 185+20 ELEV. 578.25
 B.M. # 29 PRINT SPOT ON BOULDER 34 FT LT OF STA 192+61 ELEV. 560.75

SERIES NO. 95-1
 SHEET 12 OF 17

13