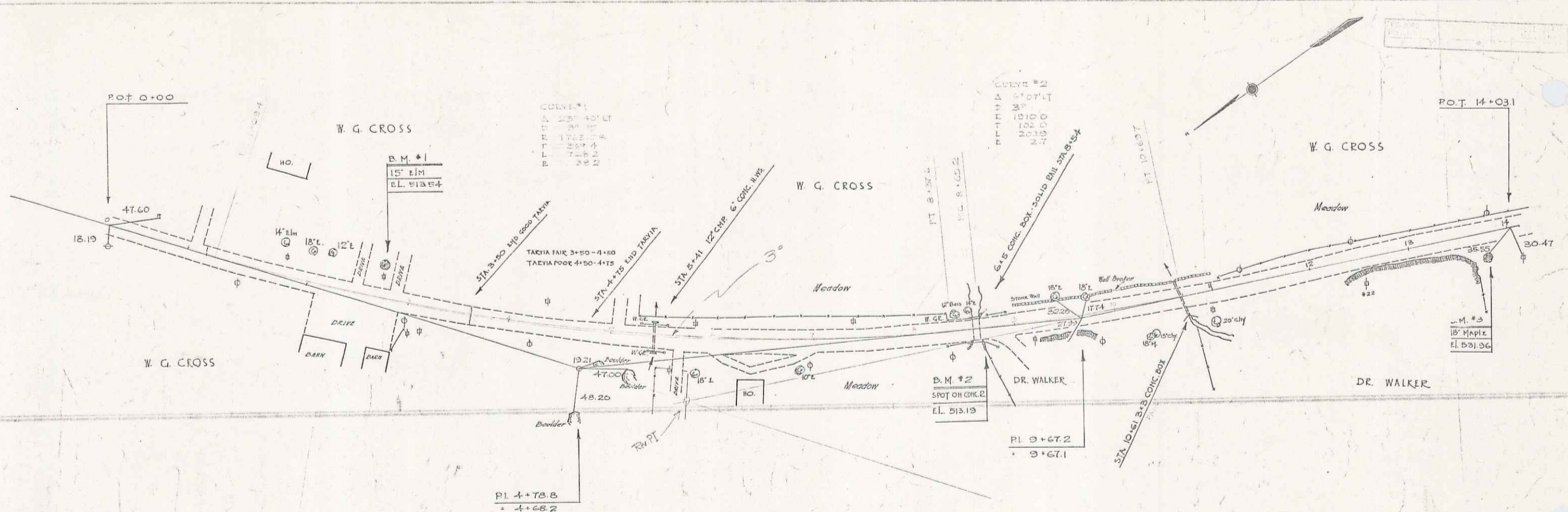
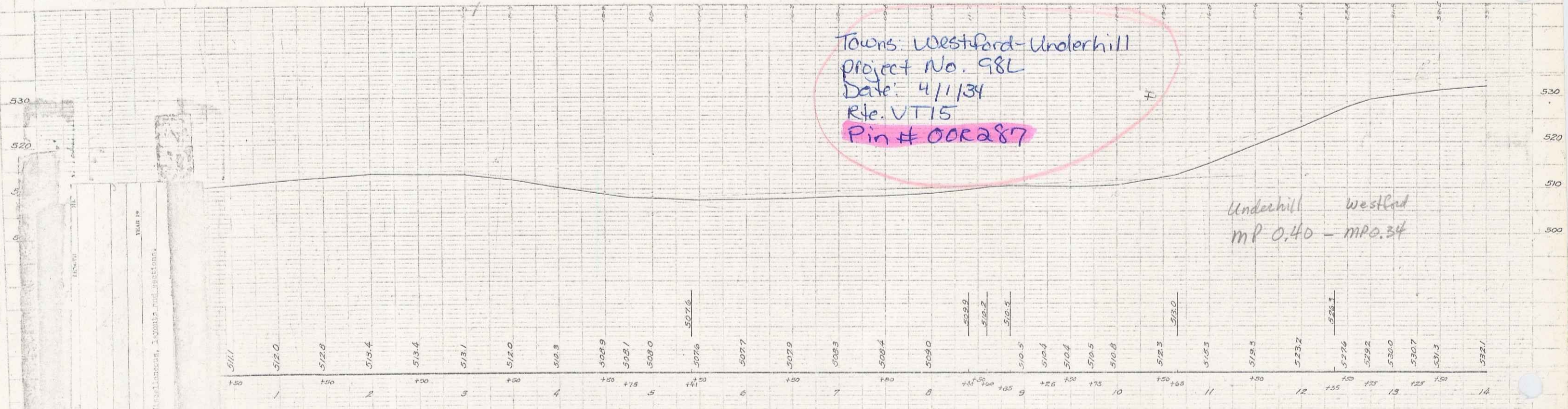


PLAN
 SHEET NO. 8824
 DATE 4/1/34
 DRAWN BY D. MACCHI
 CHECKED BY



Towns: Westford-Underhill
 Project No. 98L
 Date: 4/1/34
 Rte. VT 15
 Pin # 00R287

Underhill westford
 MP 0.40 - MP 0.34



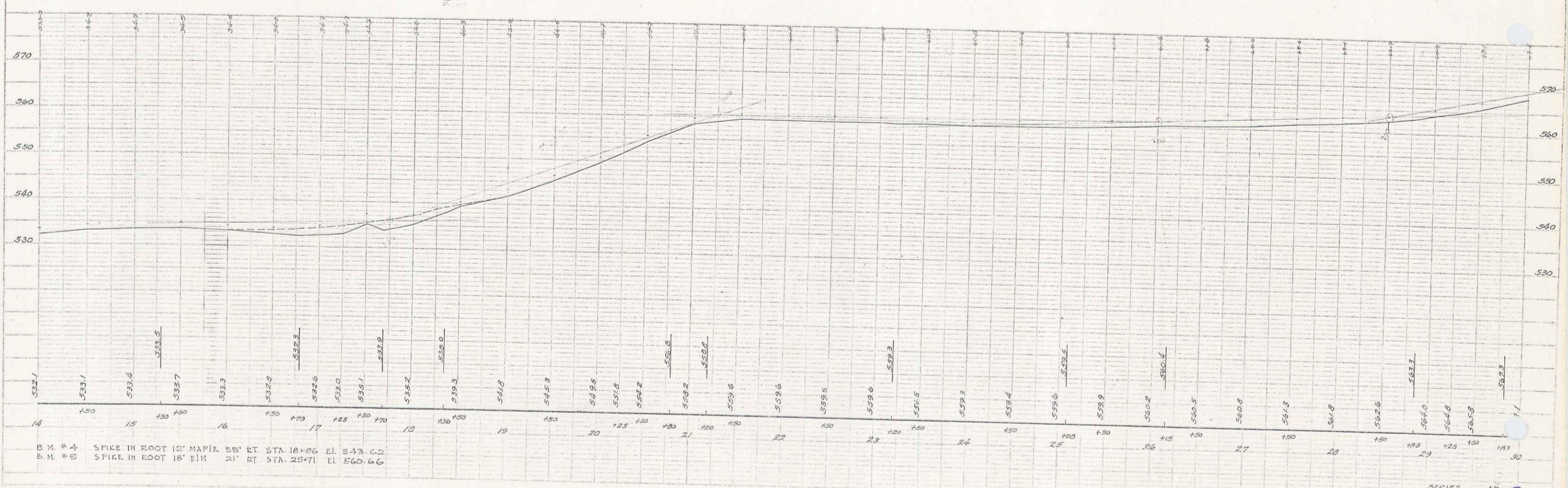
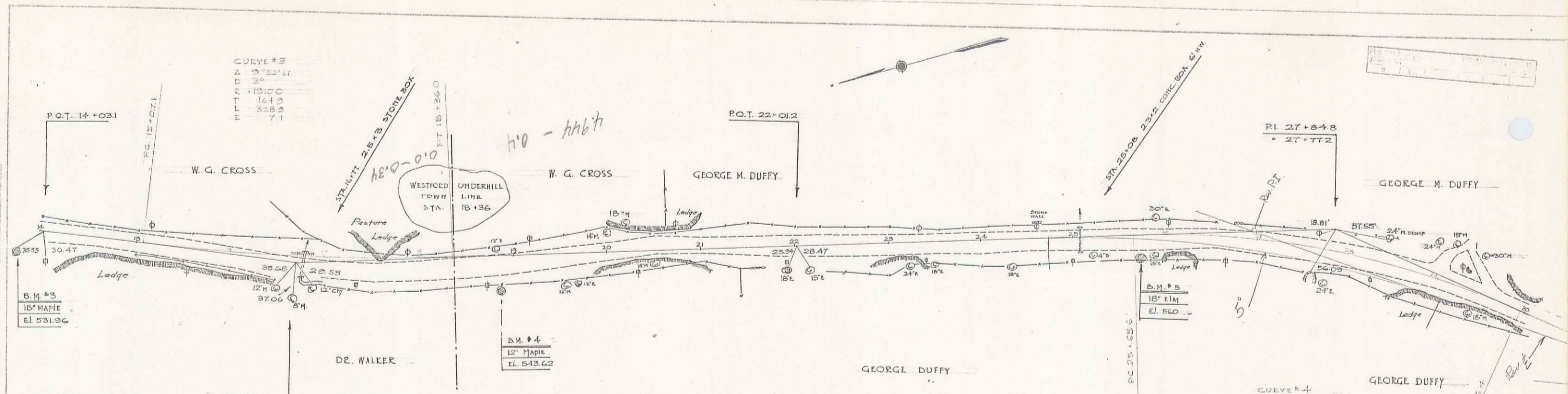
23' LIM 23' LT. STA 2+69 EL 513.54
 CONC. BRIDGE CAN. 12' LT. STA 8+66 EL 513.13
 MAPLE 23' RT. STA 13+76 EL 511.96

SERIES NO. 17
 SHEET 1 OF 17

DIST. # 8 PLANS

1

PLAN
 BARRETT
 D. MACCHI
 4/15/34
 TRACED



PROFILE
 WOOD
 BRUCE

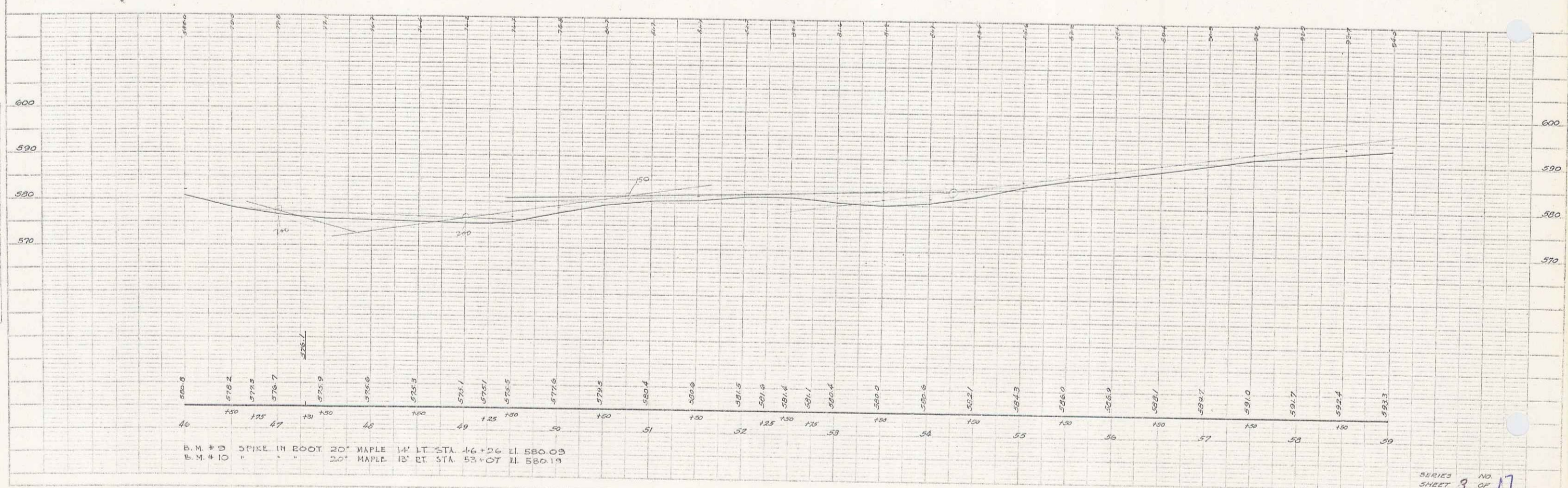
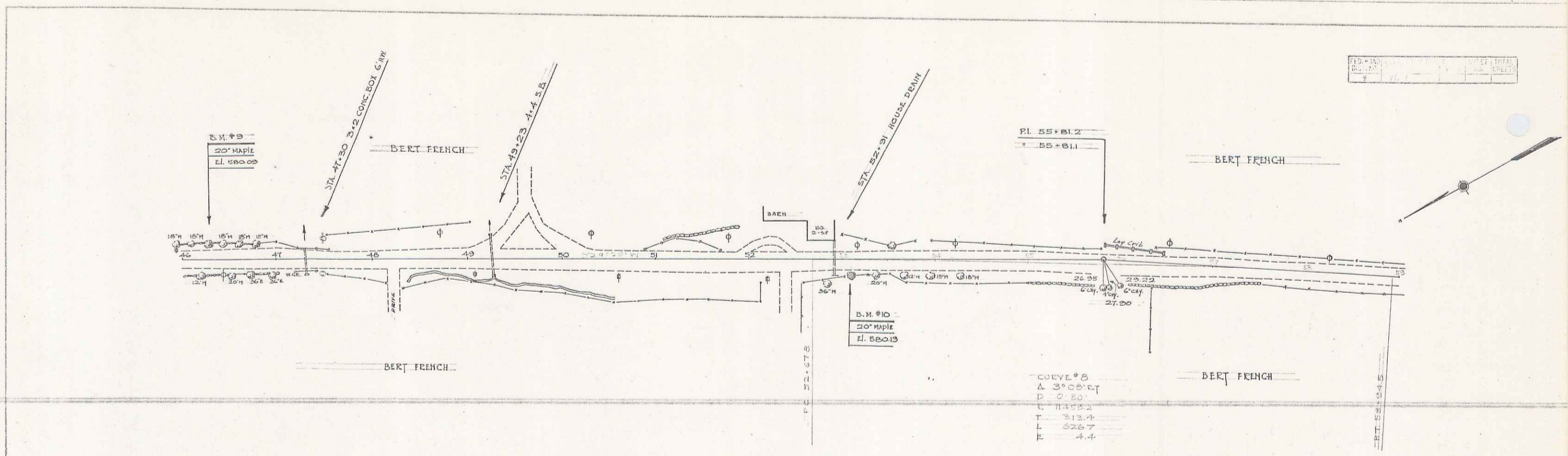
B.M. #4 SPIKE IN ROOT 12" MAPLE 35' RT STA 18+36 EL. 543.62
 B.M. #5 SPIKE IN ROOT 18" ELM 21' RT STA 25+71 EL. 560.66

SERIES NO. 17
 SHEET 2 OF 17

2

PLAN
 BARRETT
 D. WISCH
 1/24/24
 TRACED
 D. WISCH

80' x 11'
 1/24/24
 D. WISCH

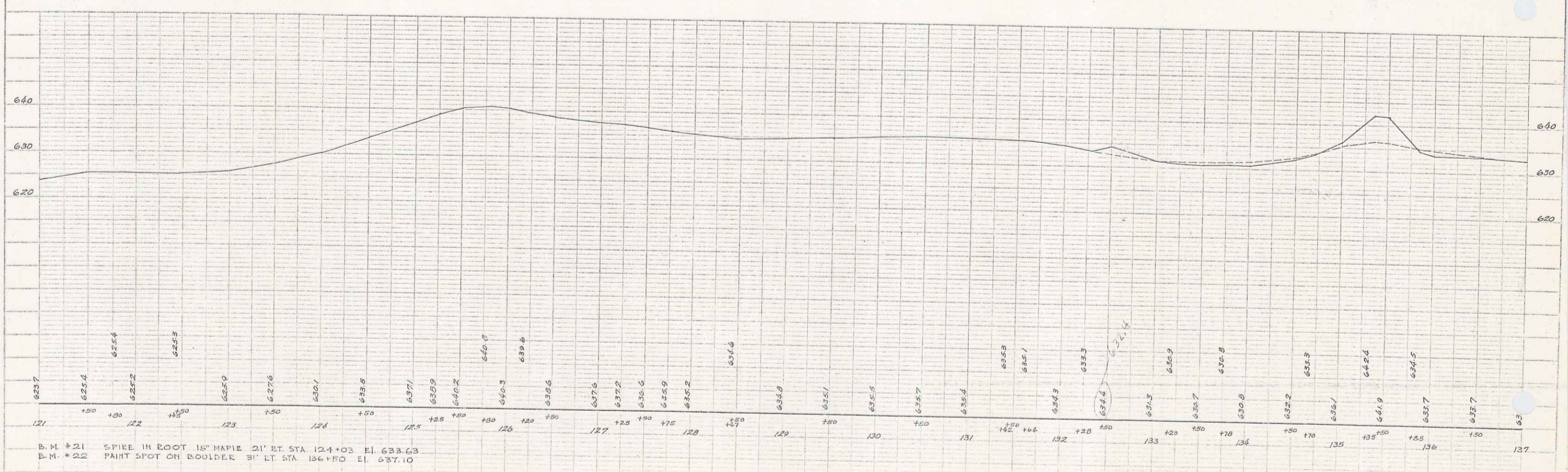
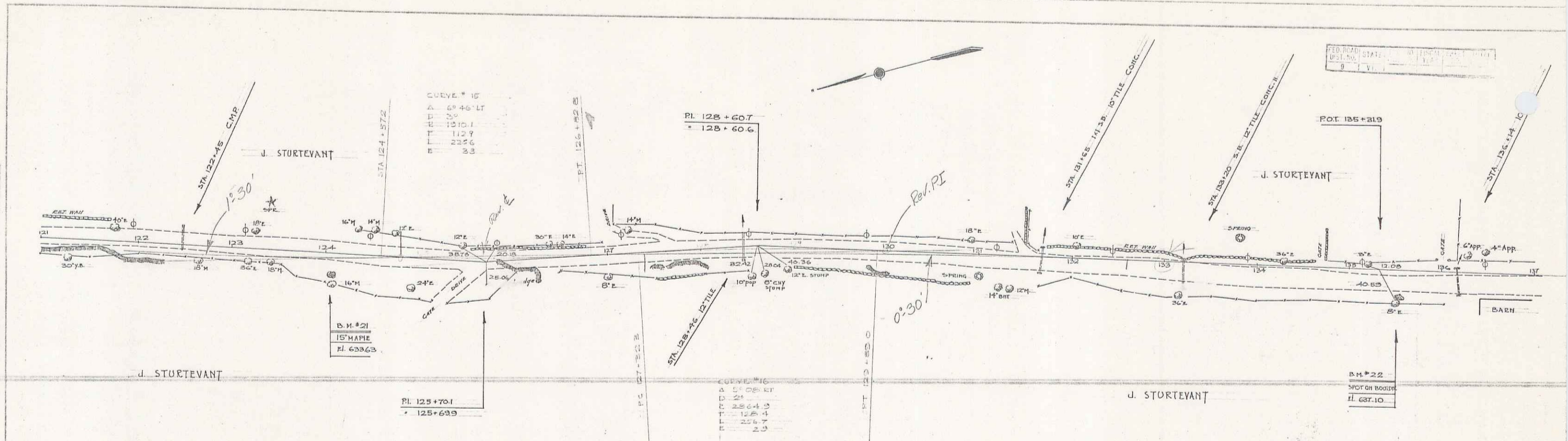


SERIES NO. 3 OF 17

WESTFORD-UNDERHILL & VERIGNE

LAB FILE NO. 100-100-100-100
 DRAWN BY BARRETT D. MACCHI 4/27/54
 CHECKED BY D. MACCHI

WOOD SECT. 100-100-100-100
 DATE 4/27/54
 SCALE 1" = 40'

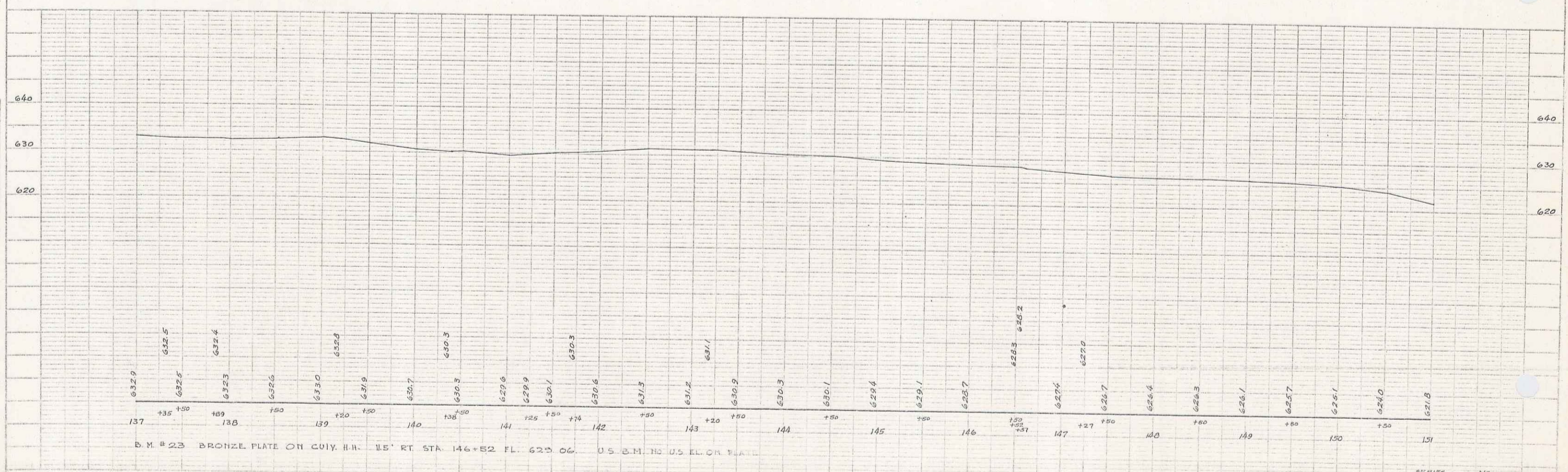
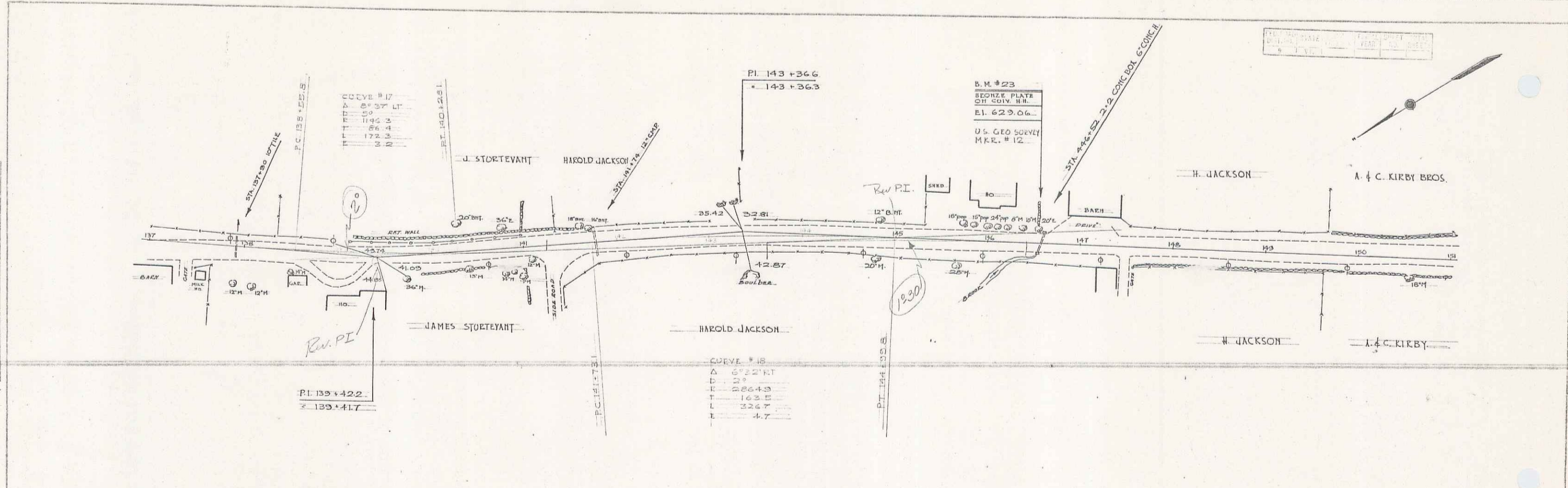


B.M. #21 SPIKE IN ROOT 18" MAPLE 21' RT STA. 124+03 EL. 633.63
 B.M. #22 PAINT SPOT ON BOULDER 31' LT STA. 136+50 EL. 637.10

SERIES NO. 8
 SHEET 8 OF 17

PLAN
 DRAWN BY
 B. MACCHI
 CHECKED BY
 D. MACCHI
 DATE
 11/14/12

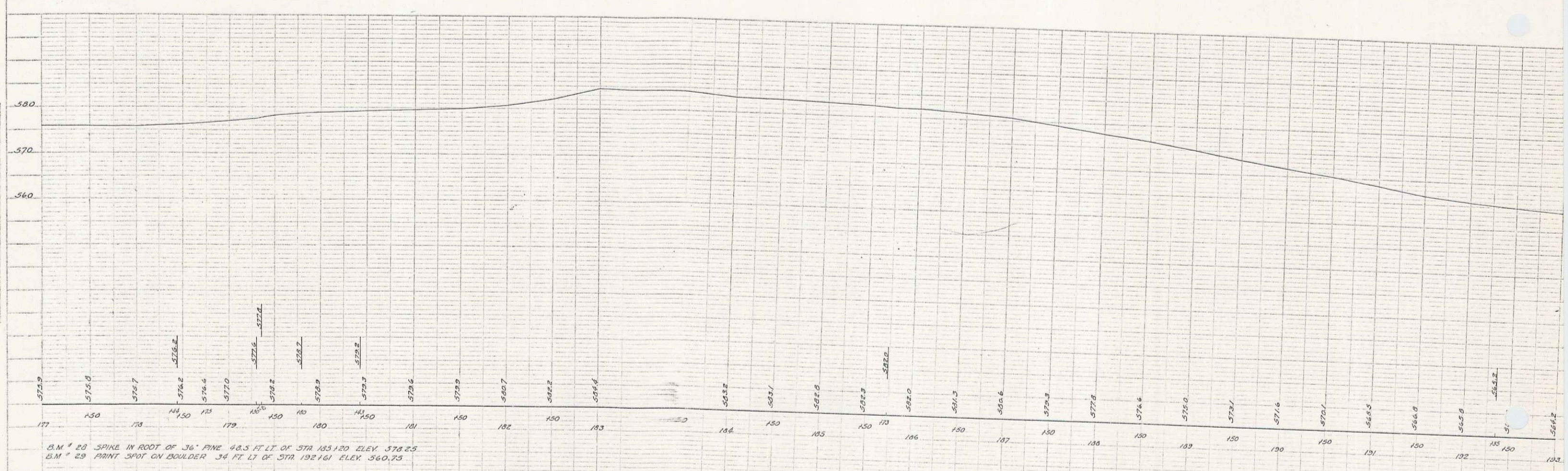
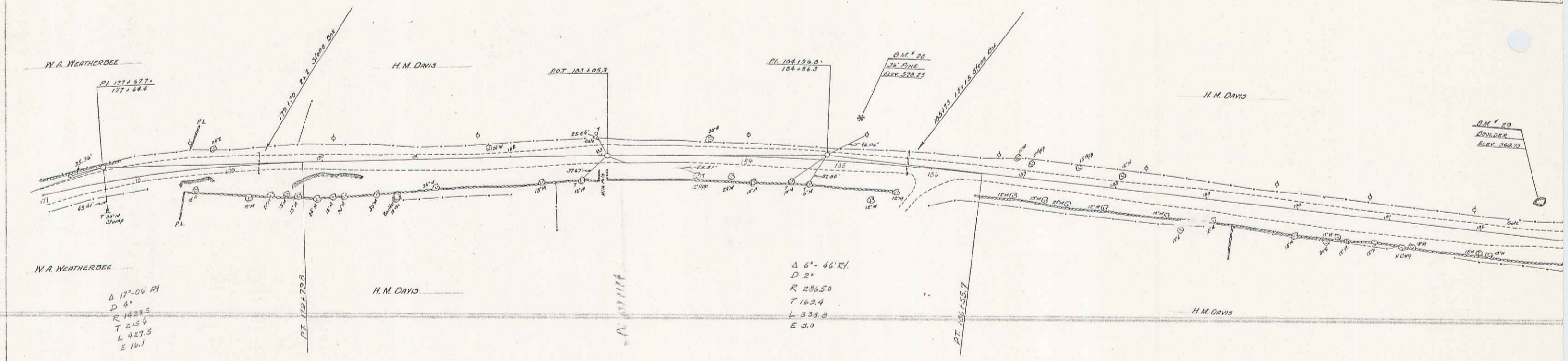
WOOD
 BLOCK
 NO. 23



B.M. #23 BRONZE PLATE ON CUIV. I.I.H. 15' RT. STA. 146+52 FL. 625.06 U.S. G.S. M. 112 U.S. EL. ON PLATE

PLATE # - PLAN PROFILE ON 1/4" X 1/4" DRAWING
 SCALE: 1" = 100' HORIZ. 1" = 10' VERT.

SERIES NO. 9 OF 17
 SHEET 9 OF 17
 13



PLAN
 W.A. WEATHERBEE
 H.M. DAVIS

PLAN
 W.A. WEATHERBEE
 H.M. DAVIS

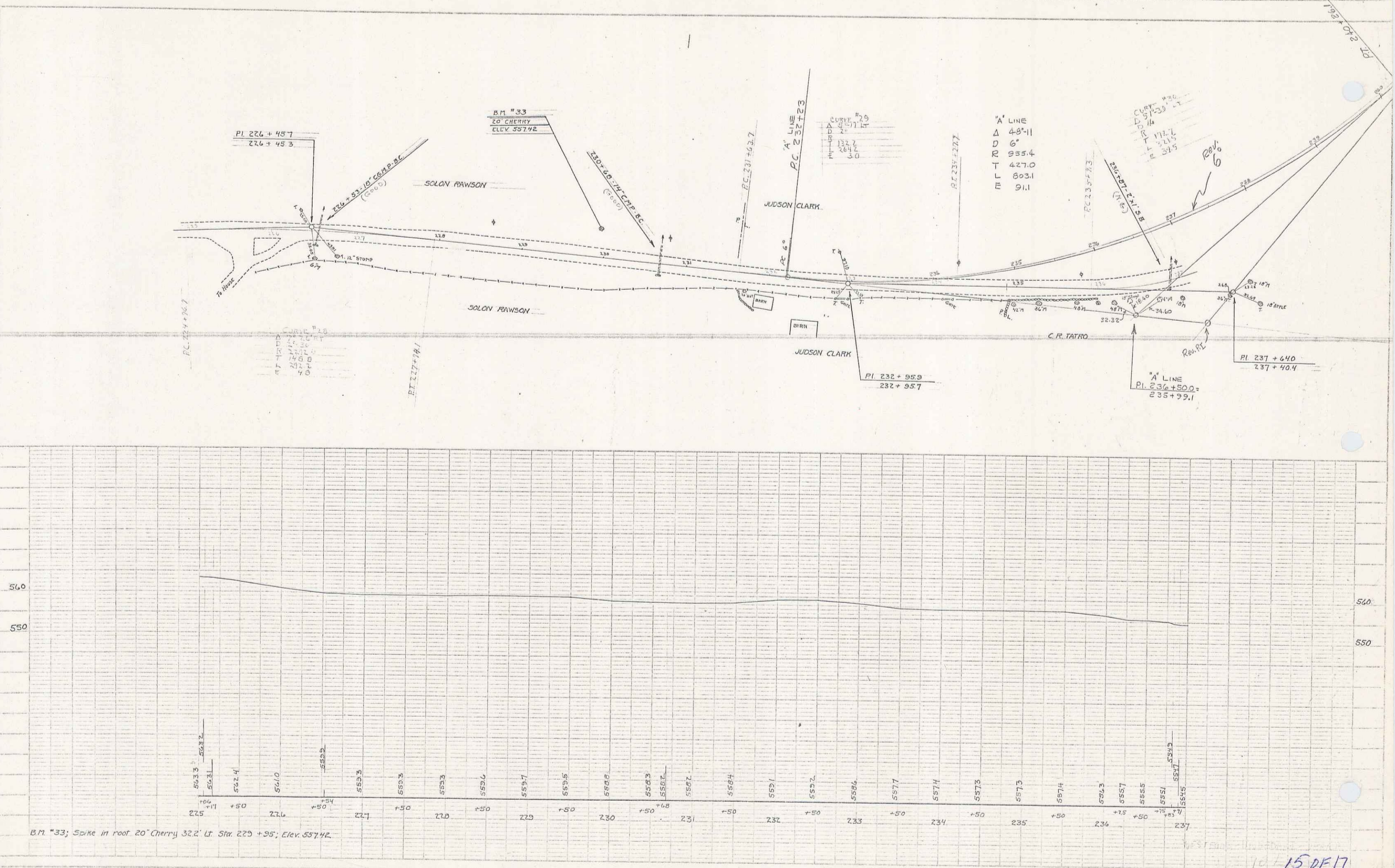
B.M. # 29 SPIKE IN ROOT OF 36" PINE 48.3 FT LT OF STA 185+20 ELEV. 578.25
 B.M. # 29 PRINT SPOT ON BOULDER 34 FT LT OF STA 192+61 ELEV. 560.25

Check H.S.

1997 CR 2 10

PLAN
 C. W. LAYTHE
 LAYTHE
 DATE
 SCALE
 PROJECT NO.

PLAN
 C. W. LAYTHE
 LAYTHE
 DATE
 SCALE
 PROJECT NO.

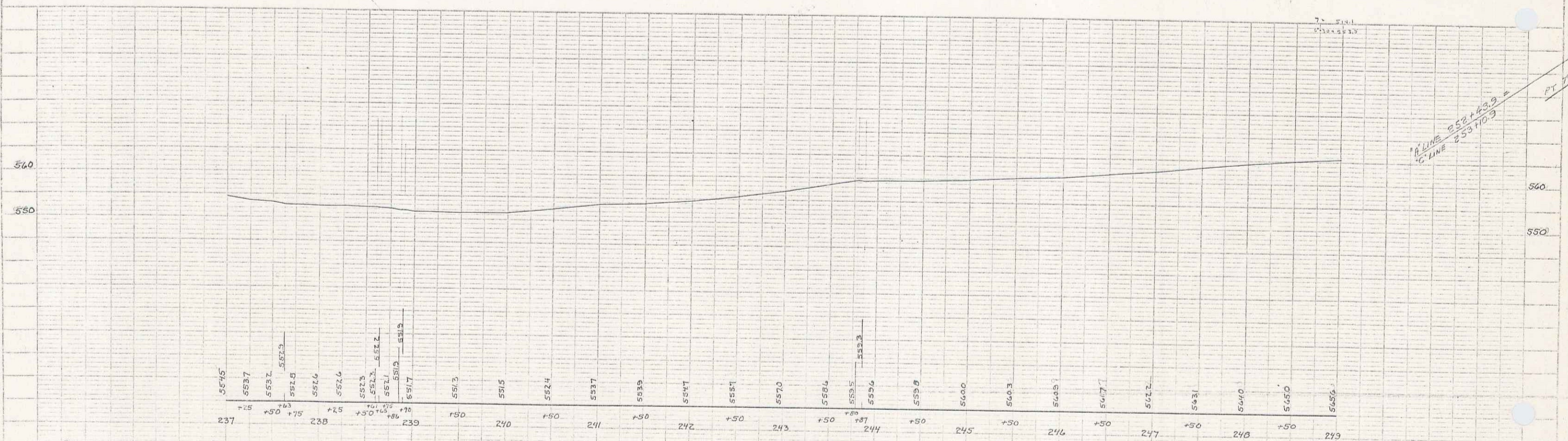
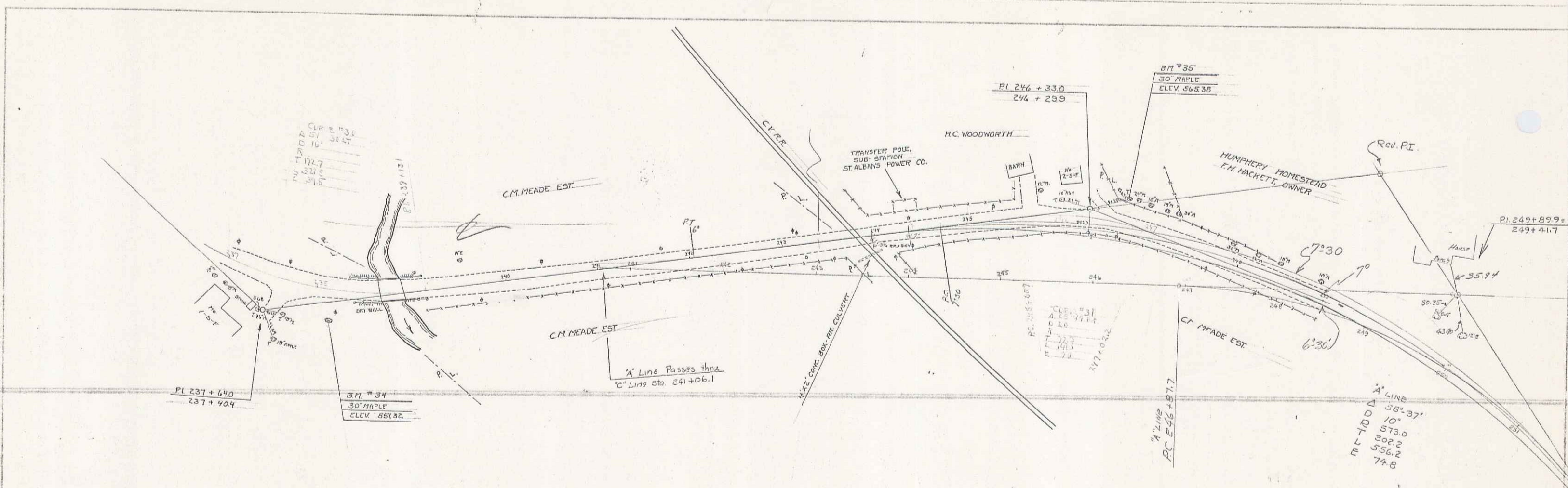


15 OF 17

74

CONSIDER
 LAYING
 TRACKED

CONSIDER
 LAYING
 TRACKED



B.M. 34 - Spike in root 30 Maple - 32.0' Rt Sta 238 + 16 - Elev. 551.32
 B.M. 35 - Spike in root 30 Maple - 28.0' Lt Sta 246 + 65 - Elev. 565.33

PLATE 1 - PUMP PROFILE - 10" DIA. 4" HEAD - 20' HGT. & 10' DIA. 4" HEAD - 20' HGT.

160017

R.N. 37 - Spike in road 30' from 210' to 259' - 04' - Elev. 55079

249	5456
+50	5441
250	5445
+50	5464
251	5455
+50	5417
252	5410
+50	5405
253	5400
+50	5495
254	5493
+50	5493
255	5473
+50	5473
256	5473
+50	5473
257	5473
+50	5473
258	5473
+50	5473
259	5473
+50	5473
260	5473
+50	5473
261	5473



RIGHT-OF-WAY DIVISION
TOWN FILE
PERPETUAL
Town of Utis
[To Be Returned To R.O.W. Division]

MP 0.40±
Sta T/L
19+3.8
undehill / Woodford.
MP 4944 MP 0.00 MP 0.30±

