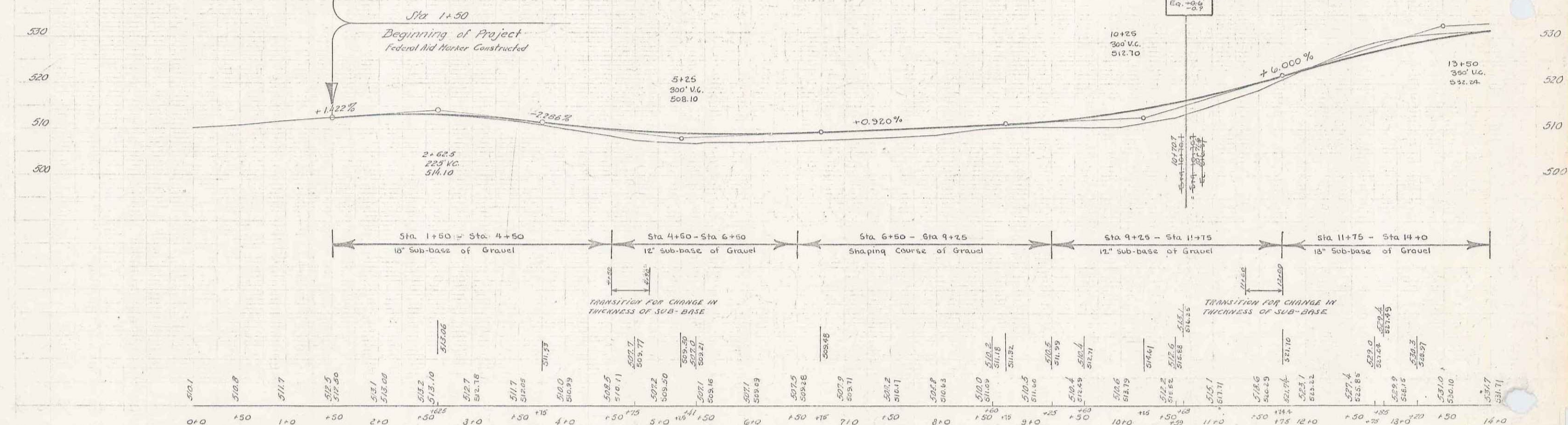
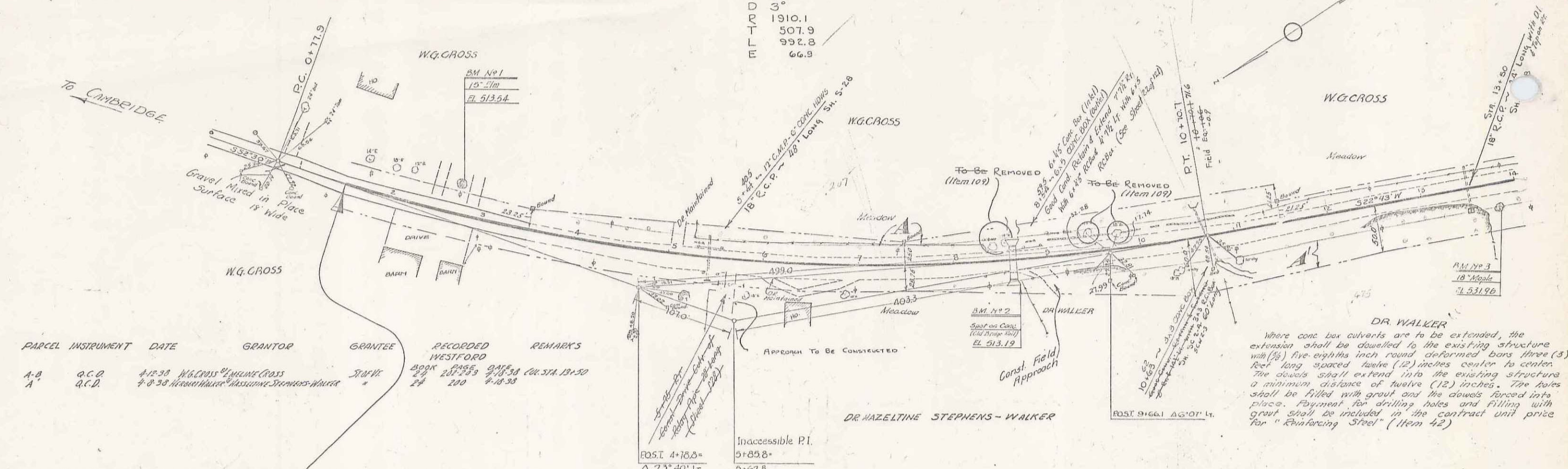


CURVE  
 Δ 29° 47' LT.  
 3°  
 1910.1  
 507.9  
 992.8  
 66.9

98-H 1933 4 121



BM No 1. Spike in root of 13" elm 29 ft left of Sta. 2+69; Elevation: 513.54.  
 BM No 2. Point spot on concrete bridge rail 12 ft right of Sta. 8+00; Elevation: 513.19.  
 BM No 3. Spike in root of 18" maple 23 ft right of Sta. 13+70; Elevation: 531.96.

SERIES PAP No. 98-H  
 SHEET 4 OF 121

4