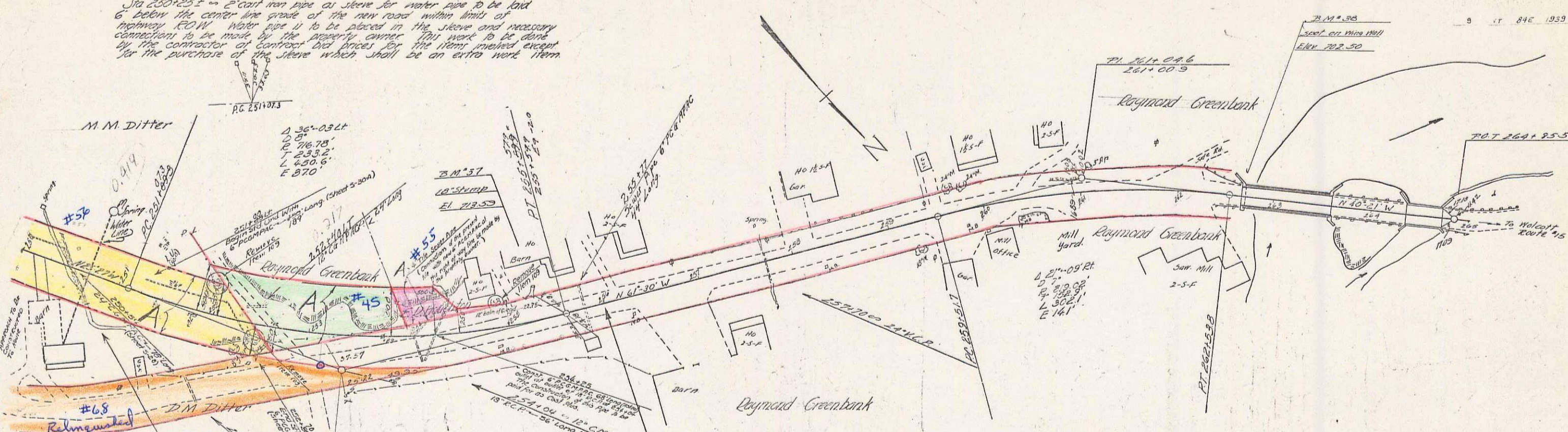


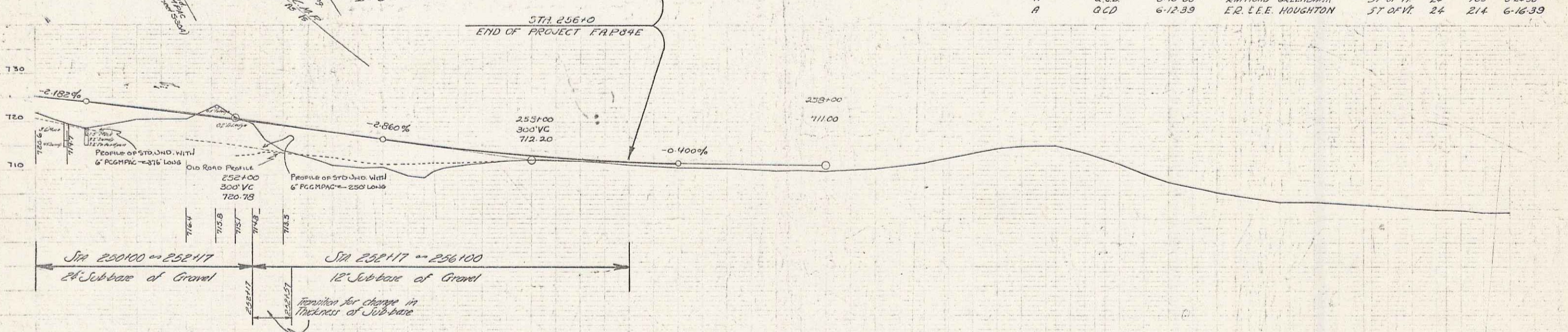
Sta 250+25.1 - 2" cast iron pipe as sleeve for water pipe to be laid 6' below the center line grade of the new road within limits of highway RCV. Water pipe is to be placed in the sleeve and necessary connections to be made by the property owner. This work to be done by the contractor at contract bid prices for the items involved except for the purchase of the sleeve which shall be an extra work item.

G. H. Hart
R. B. Bailey
4/28
4/28

G. H. Hart
R. B. Bailey
2/28
2/28



PARCEL	INSTRUMENT	DATE	GRANTOR	GRANTEE	RECORDED VOLCOFF	REMARKS
A	G.C.D.	9-6-38	M.M. DITTERS	ST OF VT	24	33-38
A	G.C.D.	9-10-38	RAYMOND GREENBANK	ST OF VT	24	33-38
A	G.C.D.	6-12-39	E.R. L.E.E. HOUGHTON	ST OF VT	24	214 6-16-39



STA	EL	THICKNESS
250+00	725.74	24"
250+05	724.49	24"
250+10	724.05	24"
250+15	722.93	24"
250+20	721.76	24"
250+25	721.07	24"
250+30	720.53	24"
250+35	720.09	24"
250+40	719.76	24"
250+45	719.24	24"
250+50	718.58	24"
250+55	718.08	24"
250+60	717.76	24"
250+65	717.06	24"
250+70	716.49	24"
250+75	715.81	24"
250+80	715.42	24"
250+85	715.06	24"
250+90	714.74	24"
250+95	714.04	24"
251+00	713.56	24"
251+05	713.14	24"
251+10	712.96	24"
251+15	712.91	24"
251+20	712.91	24"
251+25	712.91	24"
251+30	712.91	24"
251+35	712.91	24"
251+40	712.91	24"
251+45	712.91	24"
251+50	712.91	24"
251+55	712.91	24"
251+60	712.91	24"
251+65	712.91	24"
251+70	712.91	24"
251+75	712.91	24"
251+80	712.91	24"
251+85	712.91	24"
251+90	712.91	24"
251+95	712.91	24"
252+00	712.91	24"
252+05	712.91	24"
252+10	712.91	24"
252+15	712.91	24"
252+20	712.91	24"
252+25	712.91	24"
252+30	712.91	24"
252+35	712.91	24"
252+40	712.91	24"
252+45	712.91	24"
252+50	712.91	24"
252+55	712.91	24"
252+60	712.91	24"
252+65	712.91	24"
252+70	712.91	24"
252+75	712.91	24"
252+80	712.91	24"
252+85	712.91	24"
252+90	712.91	24"
252+95	712.91	24"
253+00	712.91	24"

2 1/2" x 3/4" SPIKE IN ROOT 10' STUMP 12' ST. STA 255+28 EL 713.59
2 1/2" x 3/4" SPIKE ON BRIDGE WING 18' ST. STA 262+65 EL 702.30

Hardin L. - Wolcott - Route 15
Series 60-116-045
Sheet 23 of 150