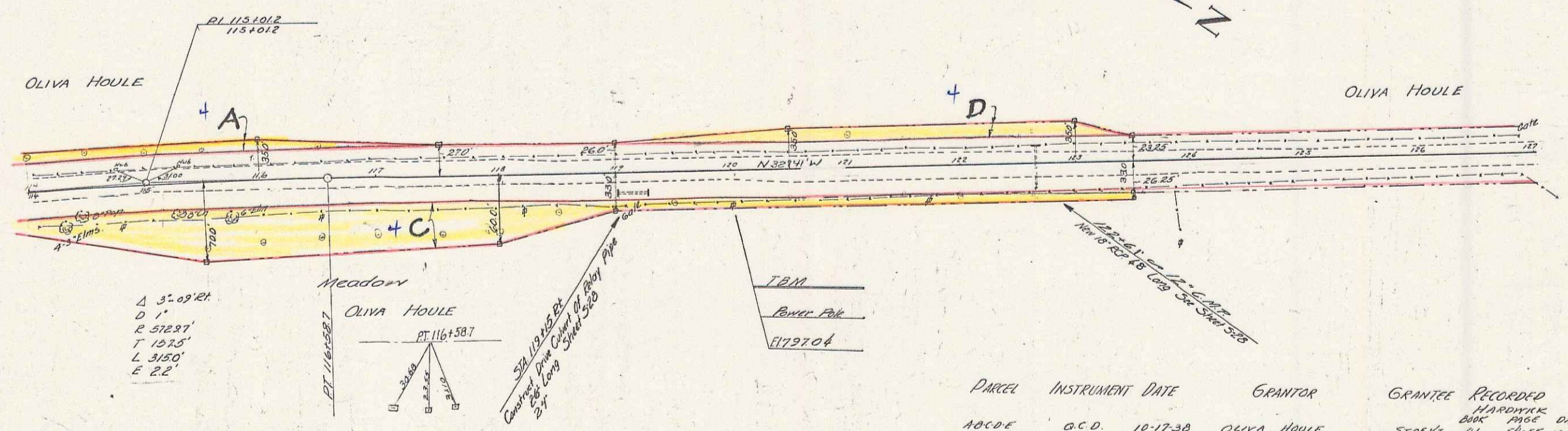
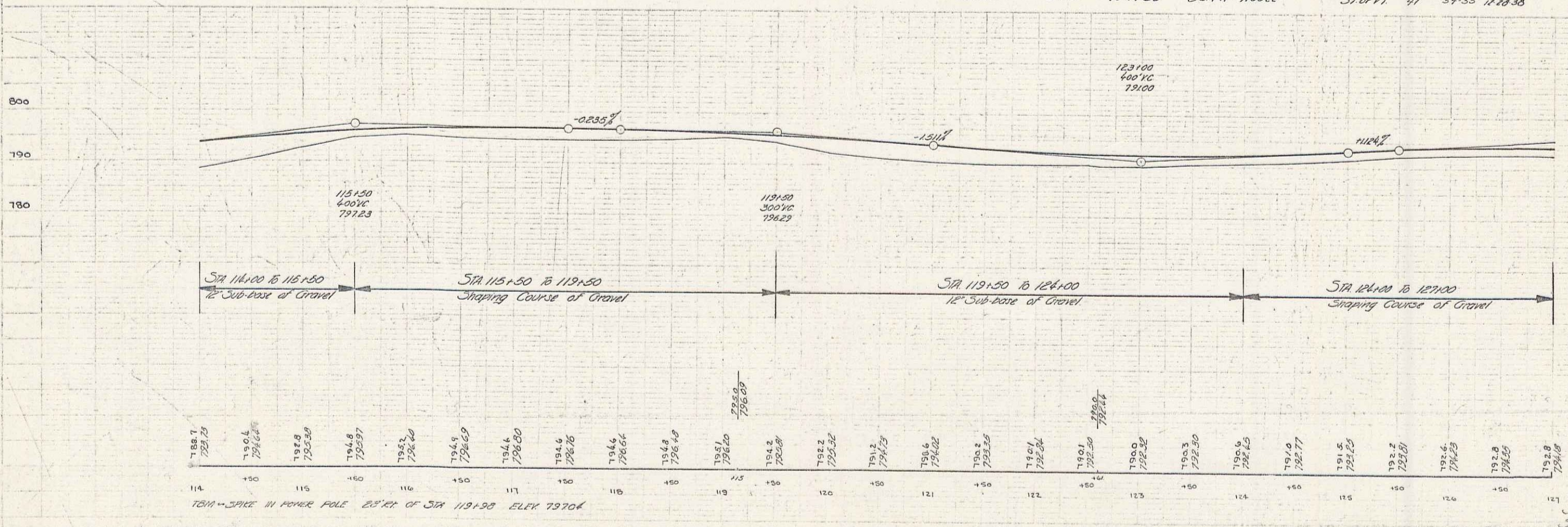


Plan
 1/4" = 100'
 1/8" = 50'
 1/16" = 25'
 1/32" = 12.5'
 1/64" = 6.25'
 1/128" = 3.125'
 1/256" = 1.5625'

Profile
 1" = 10'
 1/2" = 5'
 1/4" = 2.5'
 1/8" = 1.25'



PARCEL	INSTRUMENT	DATE	GRANTOR	GRANTEE	RECORDED
A B C D E	G.C.D.	10-17-30	OLIVA HOULE	STOFFT	HARDWARE BOOK PAGE DATE 91 54-35 11-29-30



TBM - SPIKE IN POWER POLE 25' E of STA 119+30 ELEV 197.04

Hardwick-Walton Route 15
 Series 81-E No. 81-E
 Sheet 14 of 150