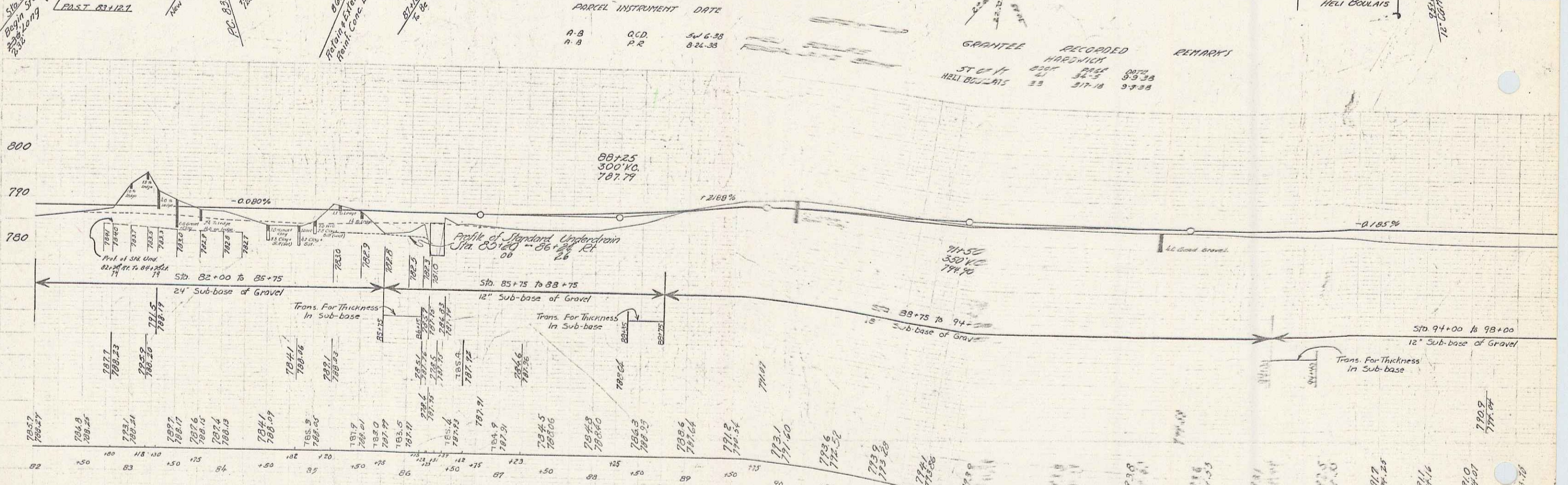
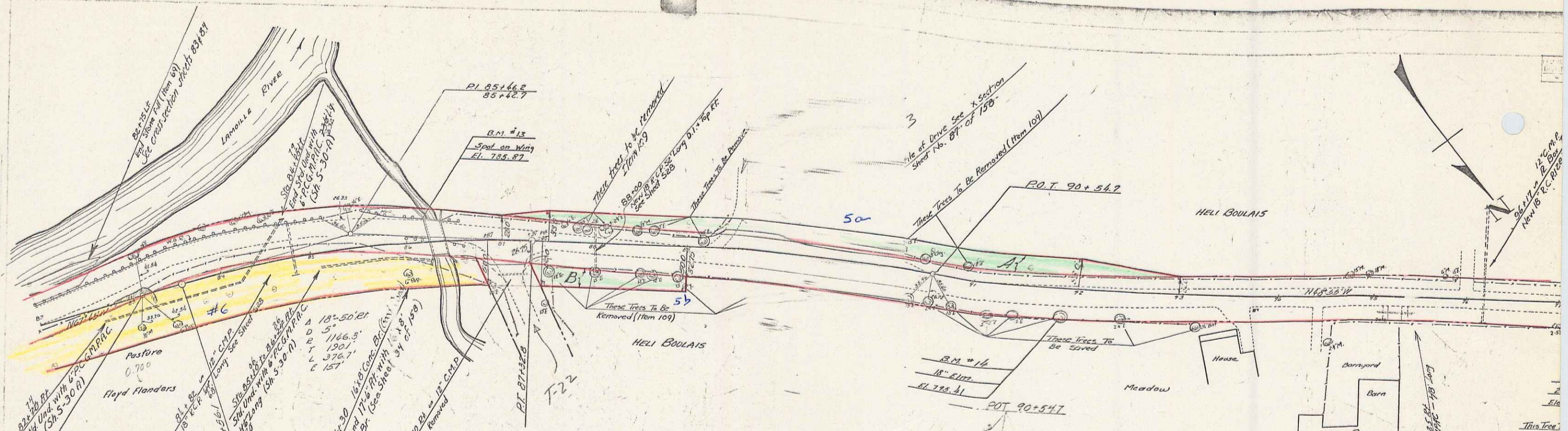


Line between corner 28900 and corner 28900
 1/2" = 100' Horizontal
 1/8" = 10' Vertical
 1/2" = 100' Horizontal
 1/8" = 10' Vertical
 1/2" = 100' Horizontal
 1/8" = 10' Vertical

1/2" = 100' Horizontal
 1/8" = 10' Vertical
 1/2" = 100' Horizontal
 1/8" = 10' Vertical
 1/2" = 100' Horizontal
 1/8" = 10' Vertical



B.M. #13 Spot on Bridge Wing 2711 Sta. 86+16 Elev. 785.87
 B.M. #14 Spike in Road 18' from 25+00 Sta. 214.96 Elev. 785.41
 B.M. #15 " " " 24' from 24+00 Sta. 28+04 Elev. 784.19