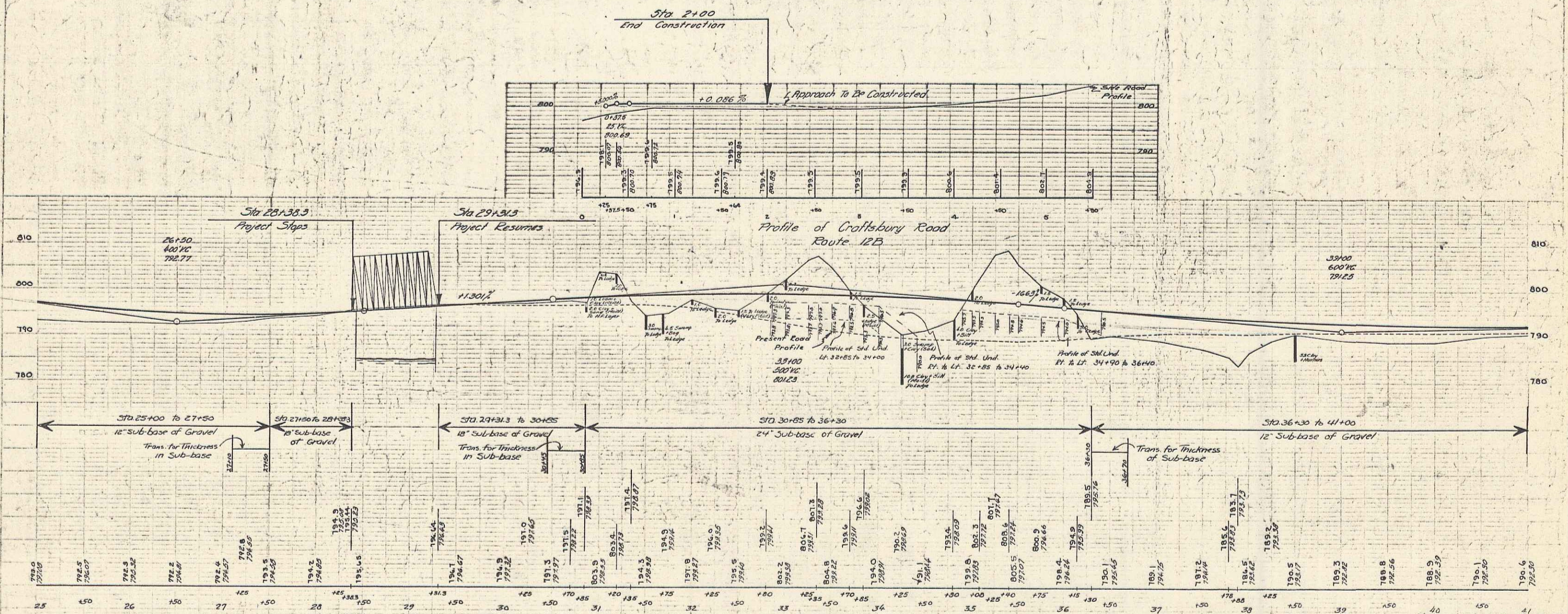


1. All work to be done in accordance with the specifications for the project.  
 2. All work to be done in accordance with the specifications for the project.  
 3. All work to be done in accordance with the specifications for the project.

4. All work to be done in accordance with the specifications for the project.  
 5. All work to be done in accordance with the specifications for the project.



B.M. # 3 Spot on Bridge Wing 14.11 Sta. 28+39 Elev. 793.11  
 B.M. # 6 Spot in Road 24' Elev. 15' Sta. 37+61 Elev. 797.61

Haverhill - Westport Route 15  
 Series PAP No. 84E  
 Sheet 8 of 158

8