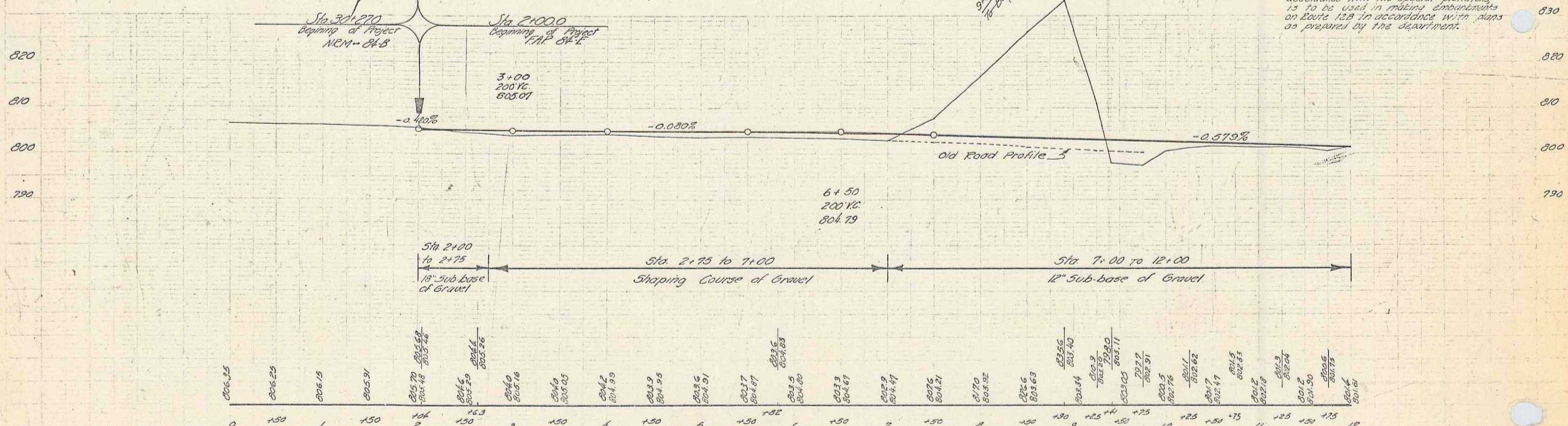
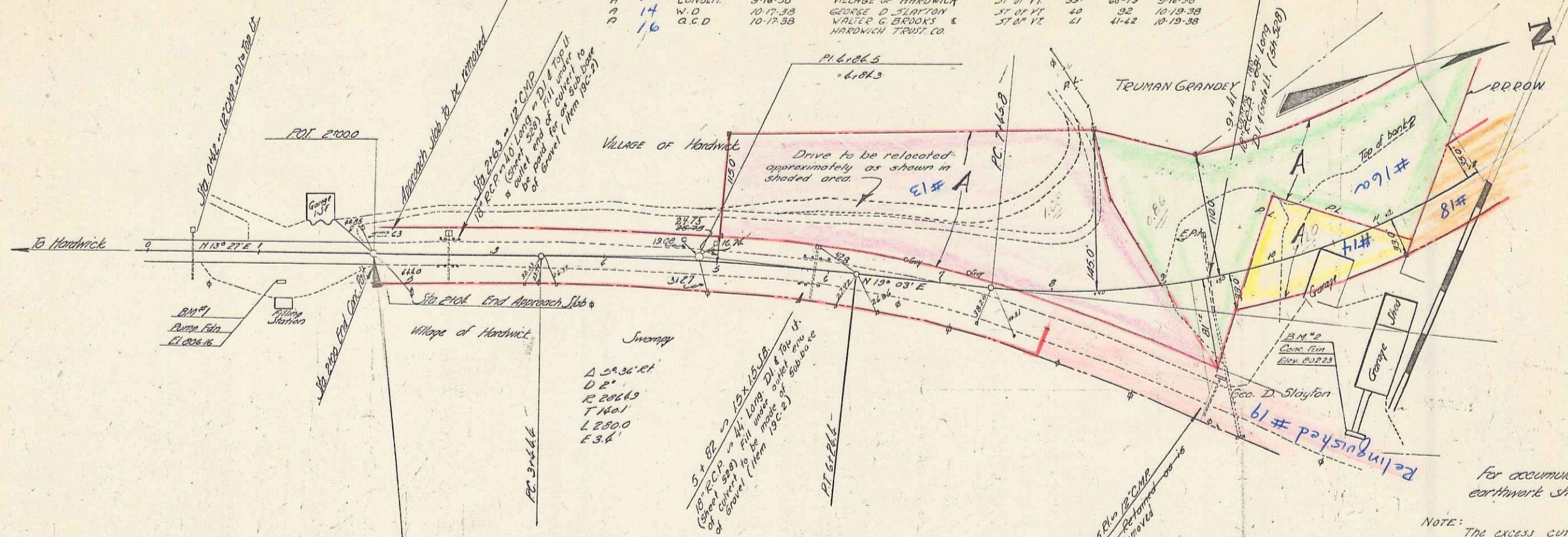


PARCEL	INSTRUMENT	DATE	GRANTOR	GRANTEE	RECORDED	REMARKS
A	13	COND. 9-16-38	VILLAGE OF HARDWICK	ST 81 VT 30	30	9-16-38
A	14	W.O. 10-17-38	GEORGE D. STAYTON	ST 81 VT 40	40	10-19-38
P	16	G.C.D. 10-17-38	WALTER G. BROOKS & HARDWICK TRUST CO.	ST 81 VT 21	21	10-19-38



B.M. 71 Spot on Pump Fill 245' R. Sta 1+20 Elev 806.16
 B.M. 72 " " " 160' R. " 10+00 " 802.23

Hardwick-Walcott Route 12
 Series TAP No. 84-E
 Sheet 5 of 150

NOTE: The excess cut on the project, in accordance with the special provisions is to be used in making embankments on Route 12B in accordance with plans as prepared by the department.