

INDEX OF SHEETS

SHEET NO. 1	TITLE PAGE
2	TYPICAL CROSS-SECTION OF IMPROVEMENT (Grading, drainage, & base, with guard rail, and double foot coat of ref. loc. with pea stone seal. Item 212)
3	BANKING AND WIDENING TABLES
4-5	PLAN AND PROFILE
6	STD. STRUCTURE SHEET, 5-28, PIPE CULVERTS.
7	5-30, GUARD RAIL.
8	5-30A, BOUNDARY MARKERS.
9	5-40, BARRICADES, SIGNS, & LIGHTS.
10	5-41, ROUNDING OF SLOPES.
11-22	CROSS SECTION SHEETS.

STD. STRUCTURE SHEETS APPROVED
BY THE CHIEF ENGINEER:
5-28, JULY 11, 1933.
5-30, AUG. 15, 1934.

(To Be Returned to R.O.W. Division)
Down of UT 15
PERMIT
RIGHT-OF-WAY DIVISION

STATE OF VERMONT
STATE HIGHWAY DEPARTMENT

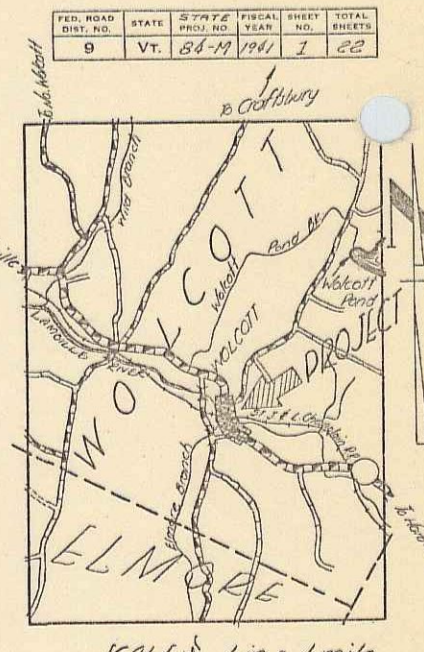
PLAN AND PROFILE OF PROPOSED
STATE HIGHWAY

STATE AID PROJECT

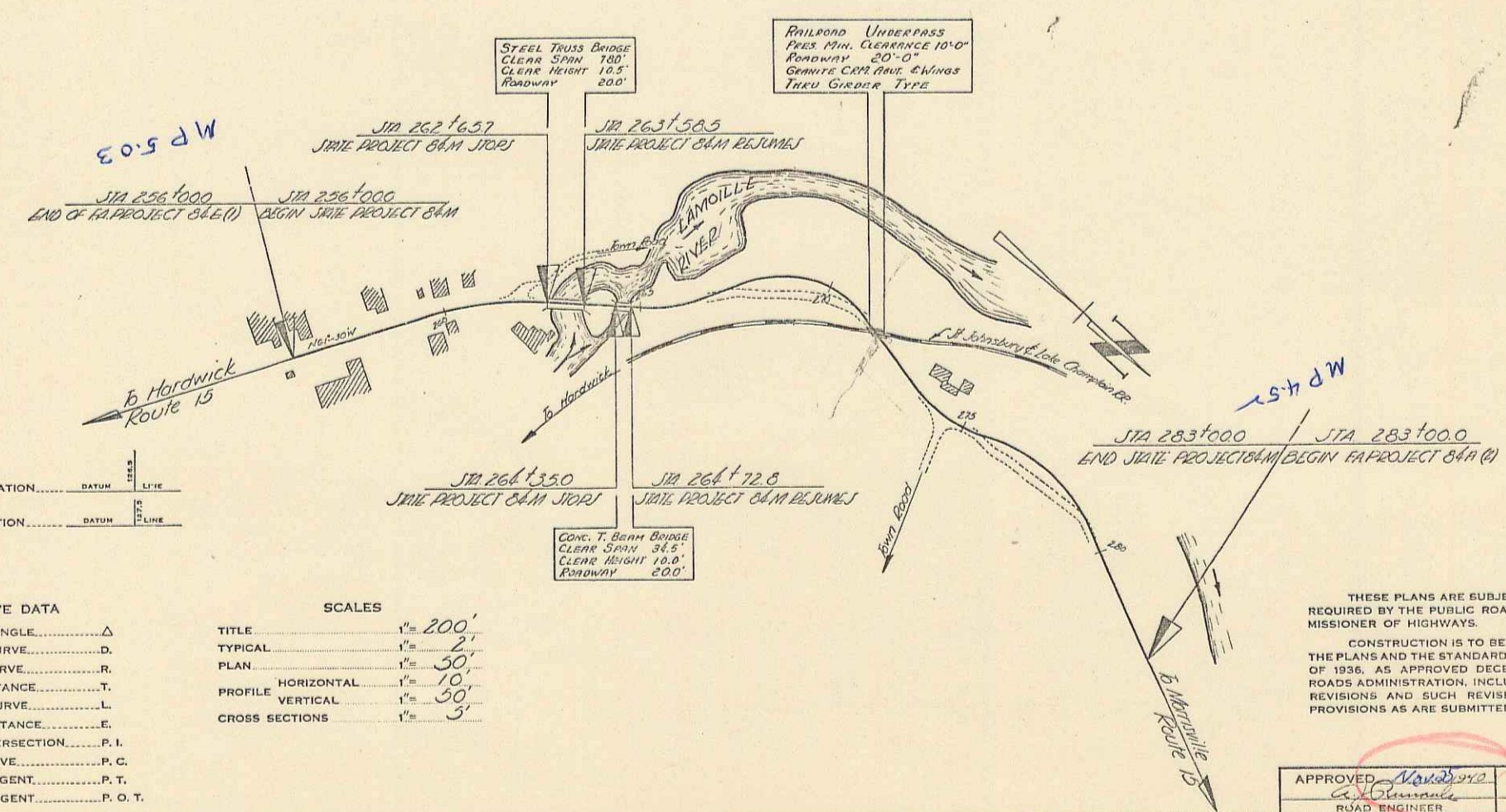
TOWN OF WOLCOTT *Pin# 000283*

HARDWICK - MORRISVILLE ROAD

BEGINNING AT A POINT ON ROUTE 15; 0.27 MI.
SOUTH-EASTERLY FROM THE ST. JOHNSBURY &
LAKE CHAMPLAIN RAILROAD UNDERPASS AND
EXTENDING NORTH-WESTERLY 0.511 MILES.
LENGTH OF PROJECT, 2569.4 FT. = 0.486 MI.



RECORD PLANS
By
G. A. Pierce



COUNTY LINE
TOWN LINE
FENCE LINE
STONE WALL
UNFENCED PROPERTY
GUARD RAIL
TRAVELED WAY
RAILROAD
RETAINING WALL
CENTER LINE
SURVEY LINE
CULVERT
DROP INLET
TROLLEY POLE
POWER POLE
TELEPHONE POLE
TREES
HEDGE

GROUND ELEVATION	DATUM	UNIT
GRADE ELEVATION	DATUM	UNIT

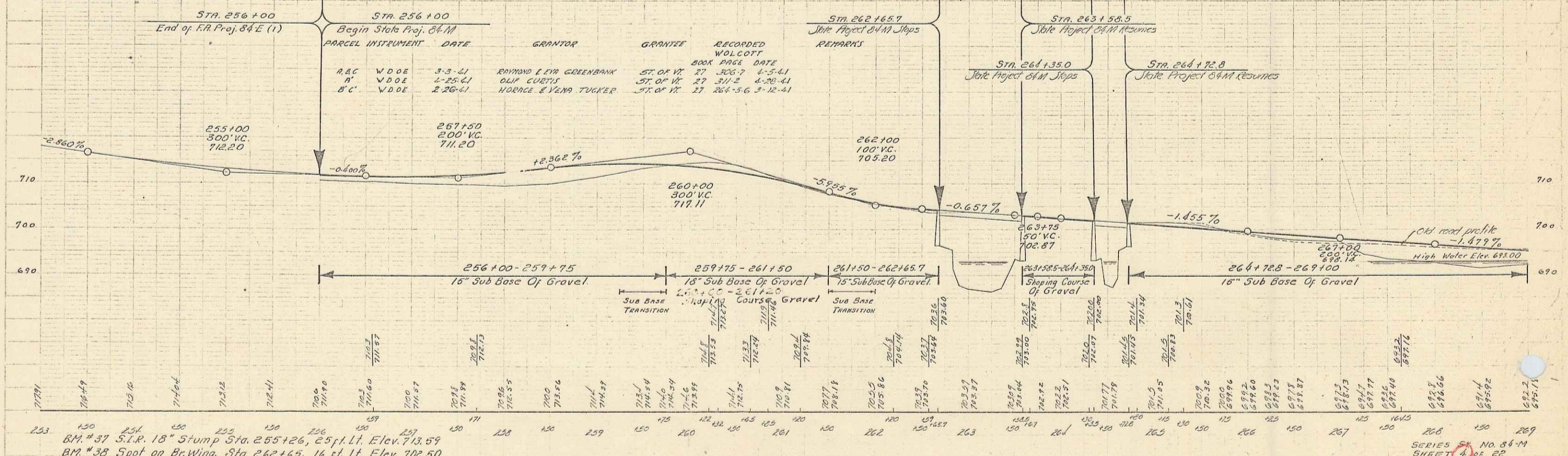
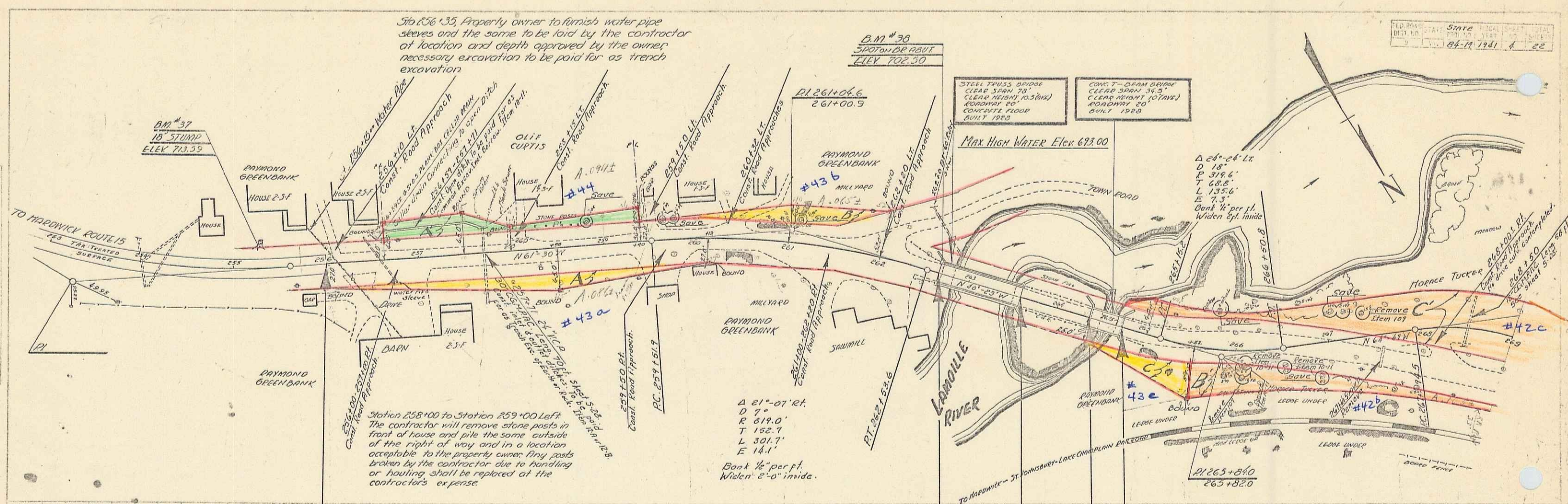
TITLE	1" = 200'
TYPICAL	1" = 2'
PLAN	1" = 50'
PROFILE HORIZONTAL	1" = 10'
PROFILE VERTICAL	1" = 30'
CROSS SECTIONS	1" = 3'

Record Plans
Wolcott ST 84 M
Contractor - Lambert & George 1941

THESE PLANS ARE SUBJECT TO SUCH REVISIONS AS MAY BE
REQUIRED BY THE PUBLIC ROADS ADMINISTRATION OR THE COM-
MISSIONER OF HIGHWAYS.
CONSTRUCTION IS TO BE CARRIED ON IN ACCORDANCE WITH
THE PLANS AND THE STANDARD ROAD AND BRIDGE SPECIFICATIONS
OF 1936, AS APPROVED DECEMBER 29TH, 1936 BY THE PUBLIC
ROADS ADMINISTRATION, INCLUDING ALL SUBSEQUENT APPROVED
REVISIONS AND SUCH REVISED SPECIFICATIONS AND SPECIAL
PROVISIONS AS ARE SUBMITTED WITH THE PLANS.

APPROVED *David 1942* ROAD ENGINEER
APPROVED *David 1250* DISTRICT HIGHWAY COMMISSIONER
SERIES ST. No. 84 M FILED
SHEET 1 OF 22

APPROVED: *G. A. Pierce*
COMMISSIONER OF HIGHWAYS
SUBMITTED BY ORDER OF THE STATE HIGHWAY BOARD
Project No. ST 84 M
Rte. VT 15
RECOMMENDED FOR APPROVAL
DISTRICT ENGINEER
PUBLIC ROADS ADMINISTRATION
FEDERAL WORKS AGENCY
APPROVED
DISTRICT ENGINEER
PUBLIC ROADS ADMINISTRATION
FEDERAL WORKS AGENCY

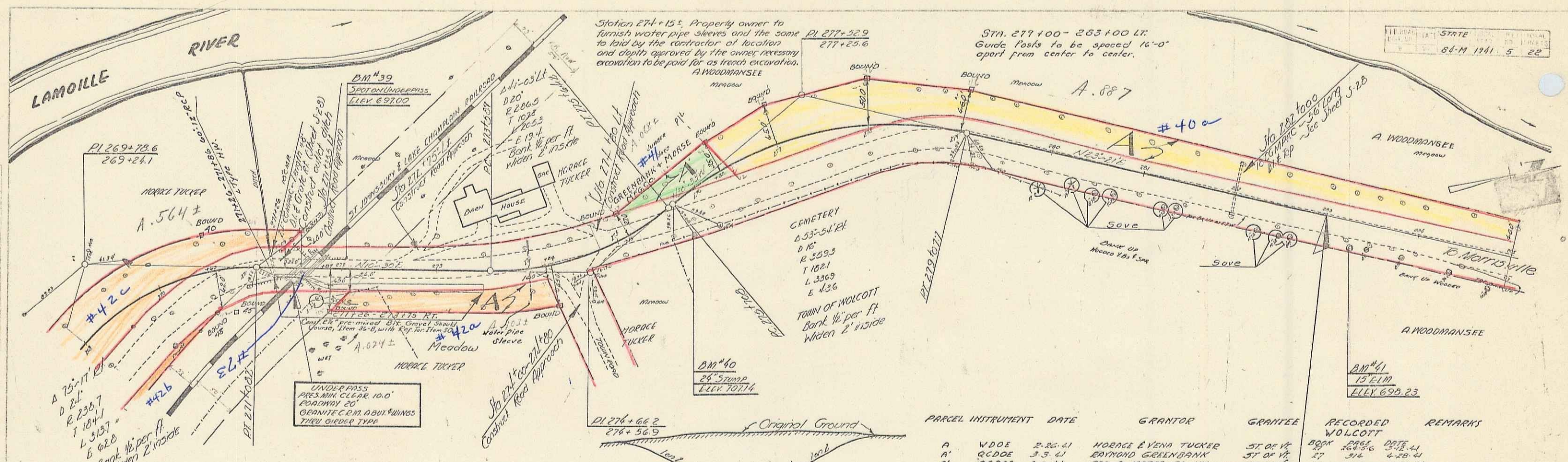


STA. 256+00 End of F.R. Proj. 84 E (1)
 STA. 256+00 Begin State Proj. 84 M
 STA. 262+65.7 State Project 84 M Stops
 STA. 263+58.5 State Project 84 M Resumes
 STA. 264+135.0 State Project 84 M Stops
 STA. 264+72.8 State Project 84 M Resumes

GRANTOR	GRANTEE	RECORDED	WOLCOTT	BOOK	PAGE	DATE	REMARKS
A.B.C. W.D.D.E.	RAYMOND E. GREENBANK	ST. OF VT.	27	306-7	4-5-41		
A' W.D.D.E.	OLUF CURTIS	ST. OF VT.	27	311-2	4-20-41		
B' C' W.D.D.E.	HORACE E. VAND TUCKER	ST. OF VT.	27	264-56	3-12-41		

STA. 256+00-259+75 15" Sub Base Of Gravel
 STA. 259+75-261+50 15" Sub Base Of Gravel
 STA. 261+50-262+65.7 15" Sub Base Of Gravel
 STA. 263+58.5-264+135.0 15" Sub Base Of Gravel
 STA. 264+72.8-269+100 15" Sub Base Of Gravel

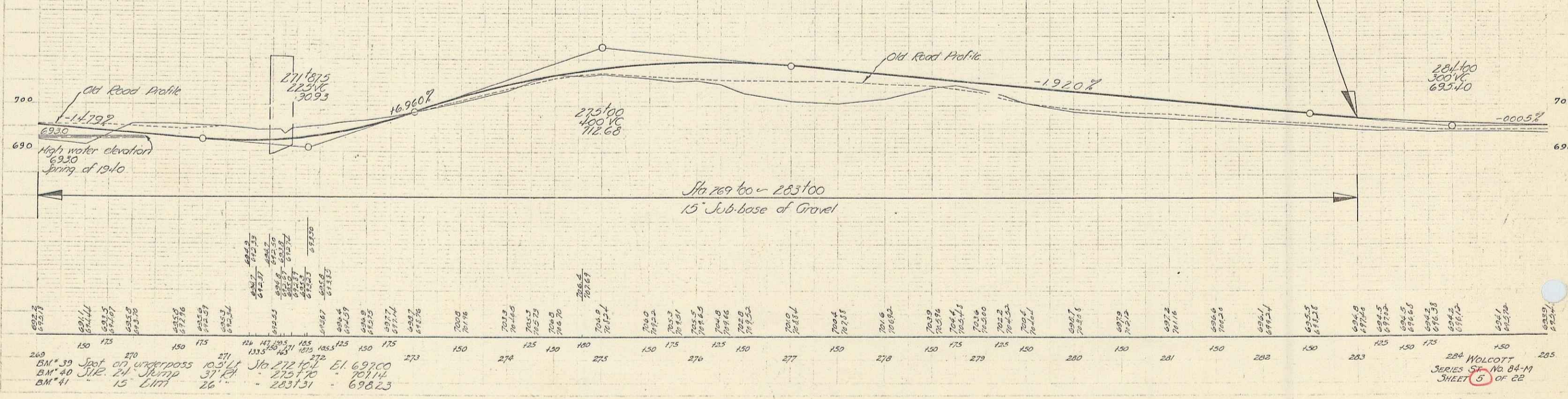
BM #37 S.I.R. 18" Stump Sta. 255+26, 25 ft. Lt. Elev. 713.59
 BM #38 Spot on Br. Wing. Sta. 262+65, 16 ft. Lt. Elev. 702.50



DATA FOR UNDERPASS

STA.	POS.	ELEV.	FINISHED GRADE	CLEARANCE
271+47	109.21	705.6	692.50	13.1
159.2	102.11	705.6	692.67	13.0
16.3	102.11	705.5	692.74	12.7
17.1	104.14	705.3	692.69	12.4

PARCEL	INSTRUMENT	DATE	GRANTOR	GRANTEE	RECORDED	REMARKS
A	WDOE	2-26-41	MORACE & VENA TUCKER	ST. OF VT.	27	314
A'	QCDOE	3-3-41	EDMUND GREENBANK	ST. OF VT.	27	315
A''	WDOE	2-26-41	GEO. A. MORSE CO. INC.	ST. OF VT.	27	239-40
			A.E. L.I.O. WOODMANSEE	ST. OF VT.	27	239-40



269 150 175 270 150 175 271 150 175 272 150 175 273 150 274 125 130 140 160 275 150 175 276 125 150 277 150 278 150 175 279 125 150 280 150 281 150 282 150 283 150 284 150 285

BM*39 Spot at underpass 15' L.H.T. Sta 272+14.1 El 692.00
 BM*40 Spot 24' Stump 37' El 701.14
 BM*41 15' Elm 698.23

284 WOLCOTT SERIES ST. No 84-M SHEET 5 OF 22