

INDEX OF SHEETS

SHEET NO. 1	TITLE PAGE
" 2	TYPICAL CROSS-SECTION OF IMPROVEMENT (24' GRAVEL)
" 3	PLAN AND PROFILE SHEET
" 4	ABUTMENT DETAILS
" 5	STB 20 NO. 25-40-40 SPAN
" 6	SB NO. 20 TYPICAL DETAILS
" 7	SB NO. 21 " "
" 8	SB NO. 11 DAMRADES ETC.
" 9	5 NO. 30 STANDARD STRUCTURES
" 10	WHICROSS SECTIONS
" 11	" 12 5 NO. 31 CURB & CUTTER C63
" 13	" 13 5 2 1/2 BALUSTRADE RAIL
" 14	" 14 5 2 1/2 TYPICAL DETAILS - \$212

Standard sheet 5-30 approved by the Chief Engineer on Aug. 15, 1933.

FED. ROAD DIST. NO.	STATE	FED. AID PROJ. NO.	FISCAL YEAR	SHEET NO.	TOTAL SHEETS
9	VT.	100855	1934	1	16

STATE OF VERMONT
STATE HIGHWAY DEPARTMENT

PLAN AND PROFILE OF PROPOSED
STATE HIGHWAY
NATIONAL RECOVERY HIGHWAY PROJECT

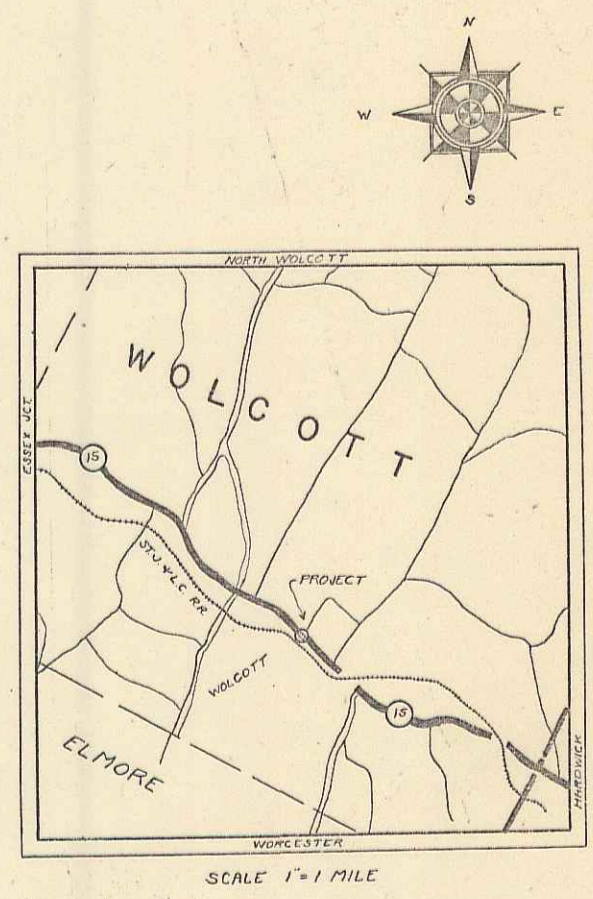
TOWN OF WOLCOTT Pin #002282
ROUTE NO. 15

BRIDGE LOCATED IN WOLCOTT VILLAGE OVER WOLCOTT POND BROOK.

LENGTH BRIDGE & APPROACHES 300 FEET = 0.056 MILES
PROJECT 300 " = 0.056 "

SCALES

PLAN	HORIZONTAL	1" = 20'
PROFILE	VERTICAL	1" = 20'
CROSS SECTIONS		1" = 5'



(To Be Returned To R.O.W. Division)
Town of
VT 15
PERPETUAL
TOWN FILE
RIGHT-OF-WAY DIVISION
MP 4.12

MP 4.08 - MP 4.11

THESE PLANS ARE SUBJECT TO SUCH REVISIONS AS MAY BE REQUIRED BY THE BUREAU OF PUBLIC ROADS, OR THE COMMISSIONER OF HIGHWAYS.
CONSTRUCTION IS TO BE CARRIED ON IN ACCORDANCE WITH THE STANDARD ROAD AND BRIDGE SPECIFICATIONS OF 1930 WITH ALL SUBSEQUENT APPROVED REVISIONS AND SUCH SPECIFICATIONS AND SPECIAL PROVISIONS AS ARE SUBMITTED WITH THE PLANS.

MILEAGE STA. 1021 + 58

CONVENTIONAL SIGNS

COUNTY LINE	GROUND ELEVATION
TOWN LINE	BATHY LINE
FENCE LINE	GRADE ELEVATION
STONE WALL	
UNFENCED PROPERTY	
GUARD RAIL	
TRAVELED WAY	
RAILROAD	
RETAINING WALL	
CENTER LINE	
SURVEY LINE	
CULVERT	
DROP INLET	
TROLLEY POLE	
POWER POLE	
TELEPHONE POLE	
TREES	
HEDGE	

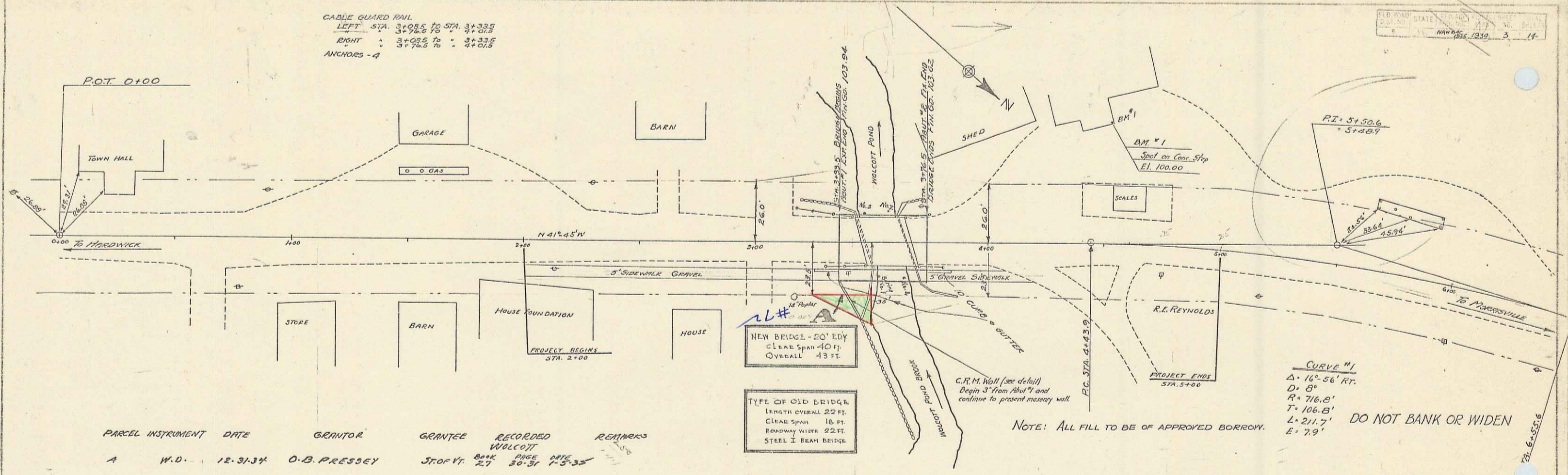
CURVE DATA

DEFLECTION ANGLE	Δ
DEGREE OF CURVE	D
RADIUS OF CURVE	R
TANGENT DISTANCE	T
LENGTH OF CURVE	L
EXTERNAL DISTANCE	E
POINT OF INTERSECTION	P.I.
POINT OF CURVE	P.C.
POINT OF TANGENT	P.T.
POINT ON TANGENT	P.O.T.

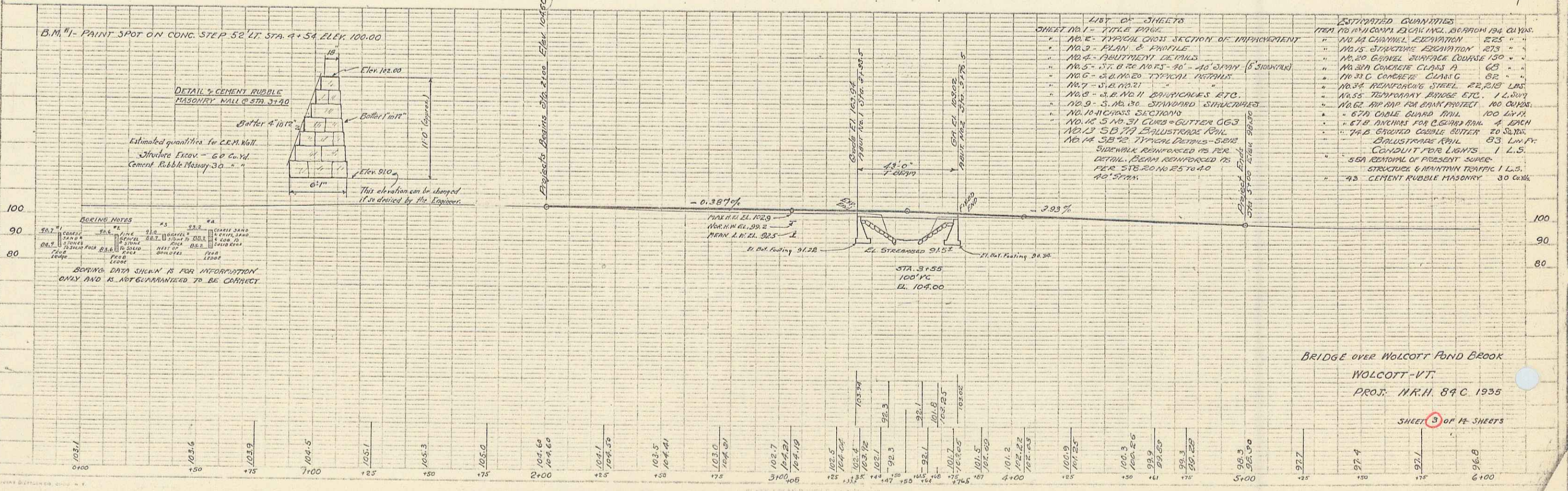
APPROVED: Aug 20-34 (1935)
Project No. NRH 89-C
SUBMITTED BY [Signature] OF THE STATE HIGHWAY BOARD
[Signature]
COMMISSIONER OF HIGHWAYS

RECOMMENDED [Signature] DISTRICT ENGINEER BUREAU OF PUBLIC ROADS
RECOMMENDED FOR APPROVAL [Signature] CHIEF ENGINEER BUREAU OF PUBLIC ROADS
APPROVED [Signature] DIRECTOR BUREAU OF PUBLIC ROADS

CORRECT: [Signature] ROAD ENGINEER
SERIES F. No. 225 FILED
SHEET 1 OF 16



PARCEL	INSTRUMENT	DATE	GRANTOR	GRANTEE	RECORDED	REMARKS
A	W.D.	12-31-34	O.B. PRESSEY	STOF VT.	BOOK 27 PAGE 30-31	1-5-35



PLAN
 SCALE: 1" = 40'

PROFILE
 SCALE: 1" = 10'

BORING NOTES

NO.	DATE	DEPTH	REMARKS
102.1	10/21/35	10.0'	...
102.2	10/21/35	10.0'	...
102.3	10/21/35	10.0'	...
102.4	10/21/35	10.0'	...
102.5	10/21/35	10.0'	...
102.6	10/21/35	10.0'	...
102.7	10/21/35	10.0'	...
102.8	10/21/35	10.0'	...
102.9	10/21/35	10.0'	...
103.0	10/21/35	10.0'	...
103.1	10/21/35	10.0'	...
103.2	10/21/35	10.0'	...
103.3	10/21/35	10.0'	...
103.4	10/21/35	10.0'	...
103.5	10/21/35	10.0'	...
103.6	10/21/35	10.0'	...
103.7	10/21/35	10.0'	...
103.8	10/21/35	10.0'	...
103.9	10/21/35	10.0'	...
104.0	10/21/35	10.0'	...
104.1	10/21/35	10.0'	...
104.2	10/21/35	10.0'	...
104.3	10/21/35	10.0'	...
104.4	10/21/35	10.0'	...
104.5	10/21/35	10.0'	...
104.6	10/21/35	10.0'	...
104.7	10/21/35	10.0'	...
104.8	10/21/35	10.0'	...
104.9	10/21/35	10.0'	...
105.0	10/21/35	10.0'	...