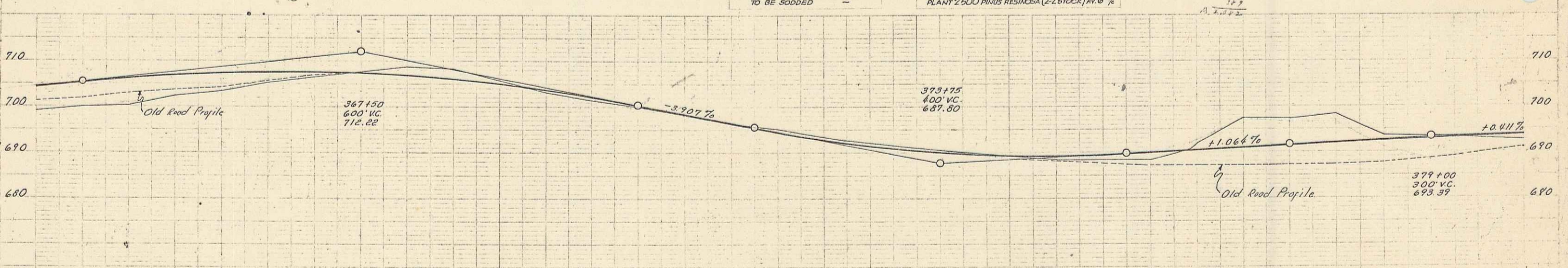
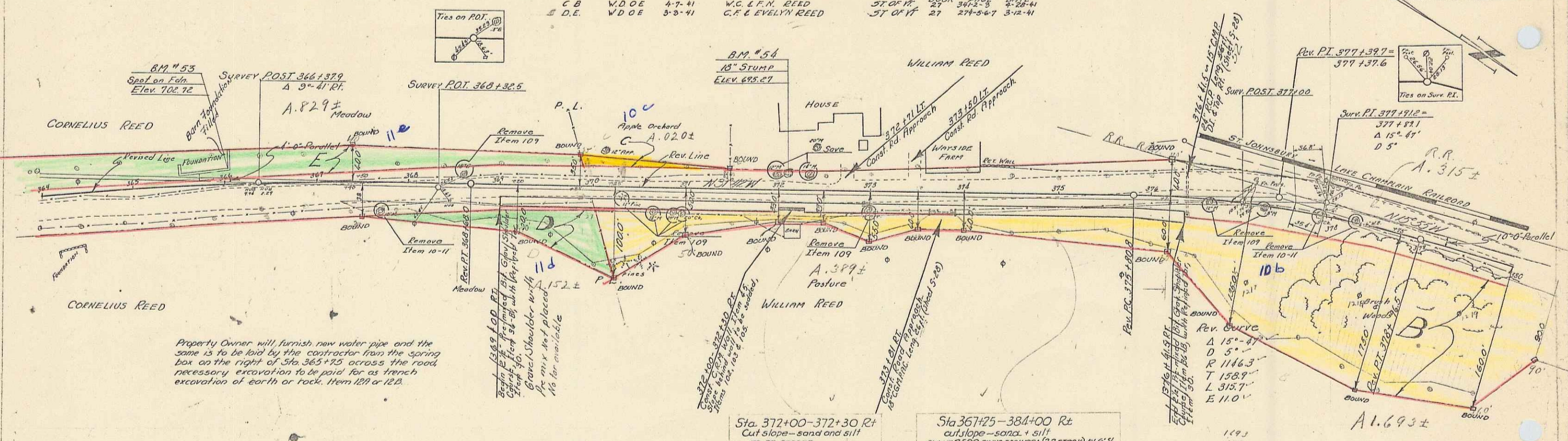


PARCEL INSTRUMENT DATE	GRANTOR	GRANTEE	RECORDED	REMARKS
C.B. W.D.O.E. 4-7-41	W.C. & F.M. REED	ST. OF R.	BOOK 27	PAGE 284
D.E. W.D.O.E. 3-3-41	C.F. & EVELYN REED	ST. OF R.	BOOK 27	PAGE 287

ED. ROAD STATE	FED. AID	SCALE	SHEET	TOTAL
VT.	6411 (2)	1" = 40'	13	163



Station	Elevation	Station	Elevation	Station	Elevation
364	697.20	368	707.07	372	694.68
365	705.82	369	705.21	373	692.8
366	702.51	370	702.32	374	690.71
367	707.91	371	700.60	375	688.57
368	707.61	372	699.55	376	687.70
369	706.66	373	696.59	377	686.19
370	705.2	374	694.68	378	684.74
371	703.90	375	692.8	379	683.15
372	702.32	376	690.71	380	681.59
373	700.60	377	688.57		
374	699.55	378	687.70		
375	696.59	379	686.19		
376	694.68	380	684.74		
377	692.8				
378	690.71				
379	688.57				
380	687.70				

B.M. # 53. Spot on fdn. 17.5' Lt. Sta. 366+06 Elev. 702.72  
 B.M. # 54. S.T.P. 16' Stump 20.5' Lt. Sta. 372+09 Elev. 695.27

SERIES F.A.R. No. 84-R(2) FILED SHEET 13 OF 163