

INDEX OF SHEETS

SHEET NO.	TITLE PAGE
1	23-4 TYPICAL CROSS-SECTION OF IMPROVEMENT (GRADING, DRAINAGE, BASE, GUARD RAIL WITH DOUBLE TACK COAT OF REFINED TAR WITH FEA STONE SEAL ITEM 29A)
2	5 BANKING AND WIDENING TABLES
3	6-20 PLAN AND PROFILE
4	26 DETAILS FOR 4x3 EXTENSION STA 324+21.5
5	27-30 BRIDGE DETAILS STA 398+65 - 399+93
6	31 DETAILS FOR 6x6 R.C.B. STA. 484+30
7	32-34 DETAILS OF BRIDGE EXTENSION STA 502+34
8	35 TYPICAL SECTIONS (ROADSIDE IMPROVEMENT)
9	36 STANDARD STRUCTURE SHEET S-28 PIPE CULVERTS
10	37 " " " " S-30 GUARD RAIL
11	38 " " " " S-30 BRICK CATCH BASIN
12	39 " " " " S-31 BOUNDARY MARKERS
13	40 " " " " S-40 BARRICADES, SIGNS AND LIGHTS
14	41 " " " " S-41 TYPICAL GRADING CROSS SECTIONS
15	42 " " " " S-2-4 CULVERT SECTIONS
16	43 " " " " SCW-4 DETAILS FOR INLET AND OUTLET 4x4 R.C.BOX
17	44 " " " " DETAILS FOR 4x5 R.C.BOX
18	45 " " " " SIB-24 2-64' SPANS 15° SKEW
19	46 " " " " SB5C CABLE GUARD RAIL
20	47-51 CHANNEL SECTIONS
21	52-169 CROSS SECTIONS
22	STANDARD STRUCTURE SHEETS APPROVED BY THE CHIEF ENGINEER
23	S-28 JULY 11, 1933
24	S-30 AUGUST 15, 1934
25	S-31 JULY 25, 1934

STATE OF VERMONT
STATE HIGHWAY DEPARTMENT

PLAN AND PROFILE OF PROPOSED
STATE HIGHWAY

FEDERAL AID PROJECT

TOWN OF WOLCOTT Pin# **00R280**

HARDWICK - MORRISVILLE ROAD

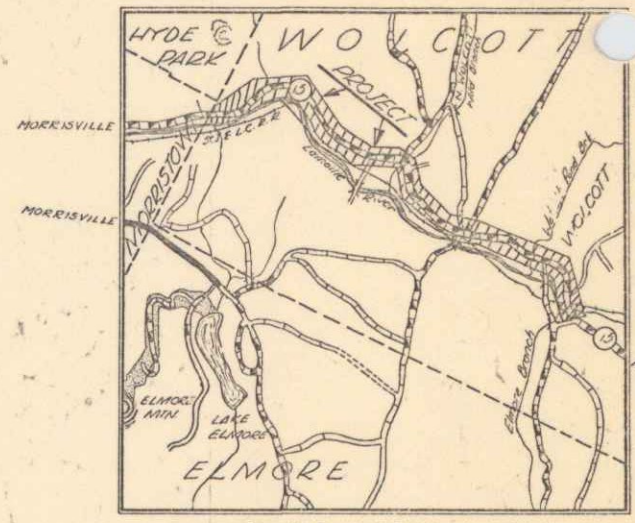
ON ROUTE 15, BEGINNING AT A POINT 1137.0 FT. NORTH OF THE ST. JOHNSBURY & LAKE CHAMPLAIN RAILROAD UNDERPASS, AND EXTENDING NORTH-WESTERLY TO THE WOLCOTT - MORRISTOWN TOWN LINE.

LENGTH OF ROADWAY - 22,126.7 FT. = 4.190 MI.

LENGTH OF BRIDGE - 128.0 FT. = 0.024 MI.

TOTAL LENGTH OF PROJECT - 22,254.7 FT. = 4.214 MI.

FED. ROAD DIST. NO.	STATE	FED. AID PROJ. NO.	FISCAL YEAR	SHEET NO.	TOTAL SHEETS
9	Vt.	64470	1941	1	169



SCALE 1 INCH = 1 MILE

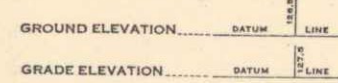
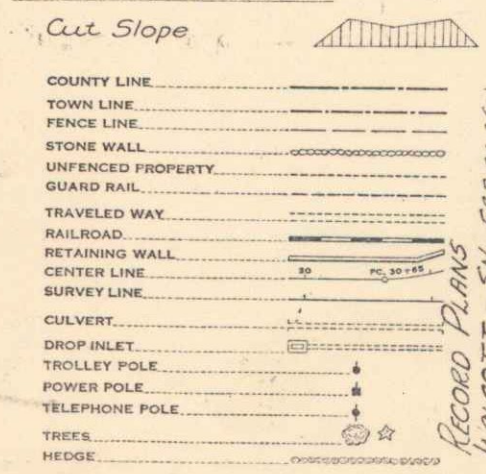
RECORD PLANS

By:

M.P. 0.00

(To Be Returned To R.O.M. Division)
Down of
PERPETUAL
RIGHT-OF-WAY DIVISION

CONVENTIONAL SIGNS -

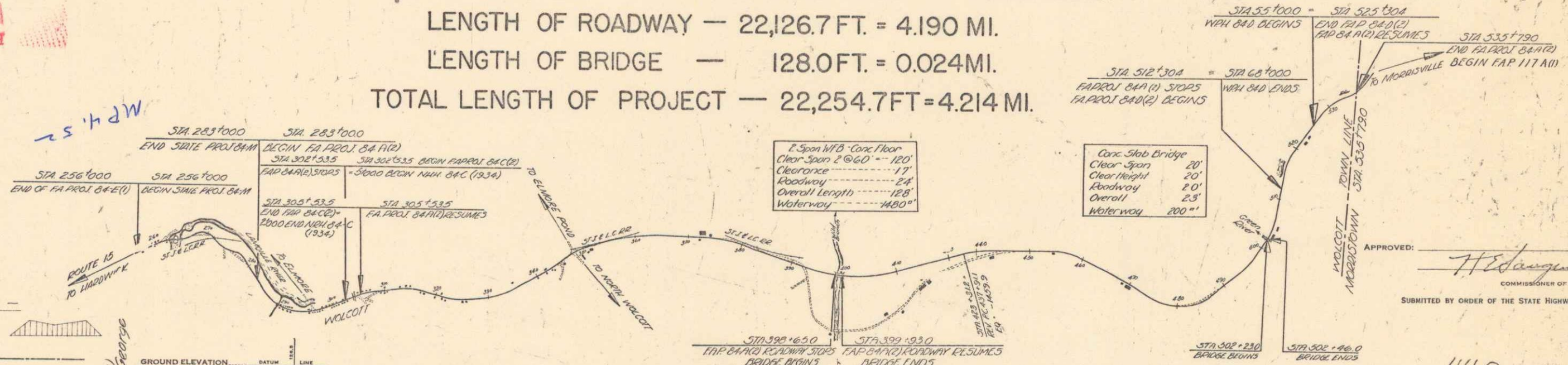


CURVE DATA

DEFLECTION ANGLE	Δ
DEGREE OF CURVE	D
RADIUS OF CURVE	R
TANGENT DISTANCE	T
LENGTH OF CURVE	L
EXTERNAL DISTANCE	E
POINT OF INTERSECTION	P. I.
POINT OF CURVE	P. C.
POINT OF TANGENT	P. T.
POINT ON TANGENT	P. O. T.

SCALES

TITLE	1" = 1000 FT
TYPICAL	1" = 2"
PLAN	1" = 50'
PROFILE	HORIZONTAL 1" = 50'
	VERTICAL 1" = 10'
CROSS SECTIONS	1" = 5'



2-Span W/B Conc. Floor

Clear Span	120'
Clearance	17'
Roadway	24'
Overall Length	128'
Waterway	1400"

Conc. Slab Bridge

Clear Span	20'
Clear Height	20'
Roadway	20'
Overall	25'
Waterway	200"

APPROVED: *H. Edgerton*
COMMISSIONER OF HIGHWAYS
SUBMITTED BY ORDER OF THE STATE HIGHWAY BOARD

440

MM0000 - 0330

Rte. VT 15
Project No. FAP84A (2)

THESE PLANS ARE SUBJECT TO SUCH REVISIONS AS MAY BE REQUIRED BY THE PUBLIC ROADS ADMINISTRATION OR THE COMMISSIONER OF HIGHWAYS.
CONSTRUCTION IS TO BE CARRIED ON IN ACCORDANCE WITH THE PLANS AND THE STANDARD ROAD AND BRIDGE SPECIFICATIONS OF 1936, AS APPROVED DECEMBER 29TH, 1936 BY THE PUBLIC ROADS ADMINISTRATION, INCLUDING ALL SUBSEQUENT APPROVED REVISIONS AND SUCH REVISED SPECIFICATIONS AND SPECIAL PROVISIONS AS ARE SUBMITTED WITH THE PLANS.

APPROVED: <i>Nov. 12, 1940</i> ROAD ENGINEER	APPROVED: <i>Nov. 25, 1940</i> DISTRICT HIGHWAY COMMISSIONER	SERIES F.A.D. NO. 64470 FILED SHEET 1 OF 169
---	---	---