

INDEX OF SHEETS

SHEET NO.	TITLE PAGE
2	TYPICAL CROSS-SECTION OF IMPROVEMENT (GRADING BASE, DRAINAGE & GUARD RAIL)
3	BARRIERS AND MARKING TABLES
4-5	PLAN AND PROFILE SHEETS
6	STANDARD STRUCTURE SHEET 328 PIPE CULVERTS
7	330 GUARD RAIL
8	331 BOUNDARY MARKERS
9	340 BARRIERS, SIGNS AND LIGHTS
10-14	CROSS SECTIONS

Standard Structure Sheet 328 Approved by the Chief Engineer on July 11, 1933
 Standard Structure Sheet 330 Approved by the Chief Engineer on August 15, 1933
 Standard Structure Sheet 331 Approved by the Chief Engineer on July 25, 1934

FED. ROAD DIST. NO.	STATE	W.P.H. PROJ. NO.	FEED. SHEET NO.	TOTAL SHEETS
9	VT.	84-D	1	14

STATE OF VERMONT
 STATE HIGHWAY DEPARTMENT

PLAN AND PROFILE OF PROPOSED
 STATE HIGHWAY

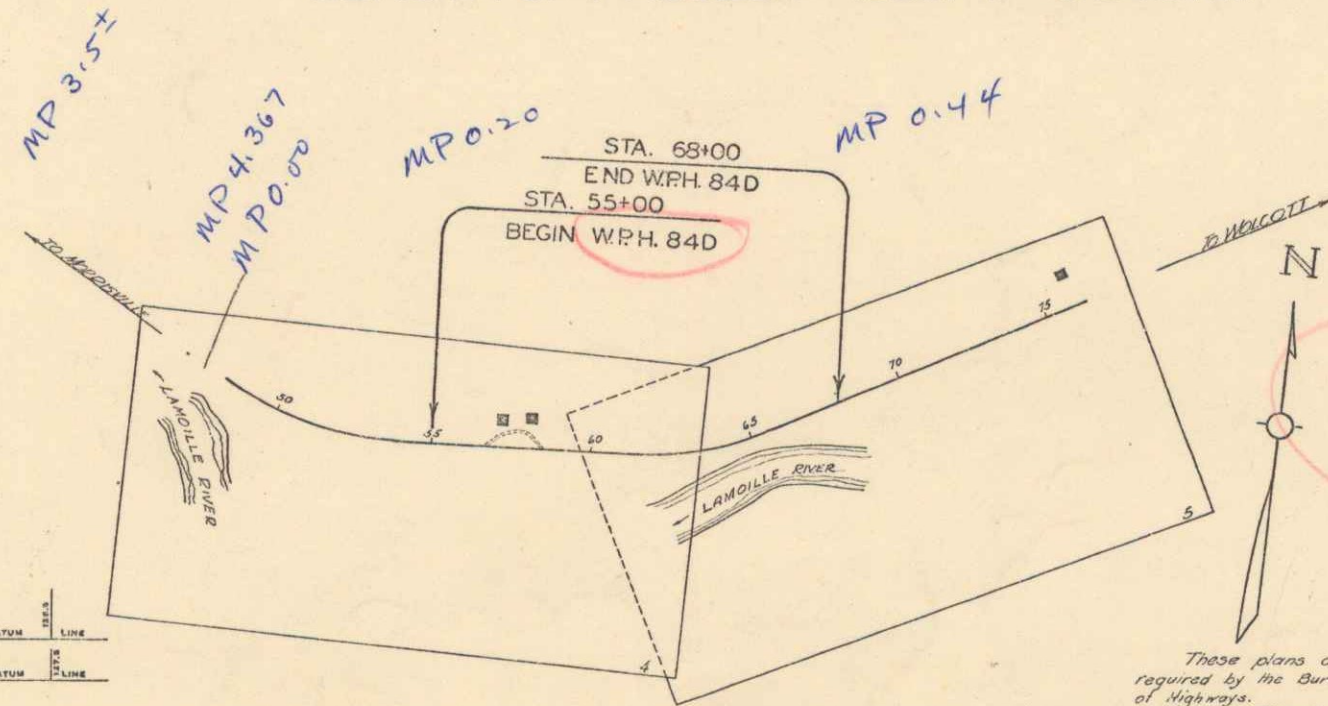
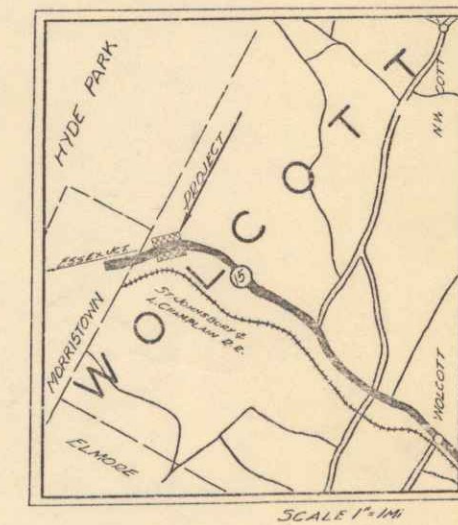
U.S. WORKS PROGRAM HIGHWAY PROJECT (W.P.H. 84-D)

TOWN OF WOLCOTT Pin# 00R278

MORRISVILLE—HARDWICK ROAD

FROM A POINT 250 FT. WEST OF THE HOUSE OF C. J. HOYT
 EASTERLY 0.246 MI.

LENGTH OF PROJECT 1300 FT. = 0.246 MI.



RIGHT-OF-WAY DIVISION
 TOWN FILE
 PERPETUAL
 Town of VT 15
 (To Be Returned To R.O.W. Division)

APPROVED: DEC. 30, 1935
 H.E. Sargent
 Commissioner of Highways
 SUBMITTED BY ORDER OF THE STATE HIGHWAY BOARD

CONVENTIONAL SIGNS

COUNTY LINE	GROUND ELEVATION
TOWN LINE	FENCE LINE
FENCE LINE	STONE WALL
UNFENCED PROPERTY	RAILROAD
GUARD RAIL	TRAVELED WAY
RAILROAD	RETAINING WALL
RETAINING WALL	CENTER LINE
CENTER LINE	SURVEY LINE
SURVEY LINE	CULVERT
CULVERT	DROP INLET
DROP INLET	TROLLEY POLE
TROLLEY POLE	POWER POLE
POWER POLE	TELEPHONE POLE
TELEPHONE POLE	TREES
TREES	HEDGE

CURVE DATA

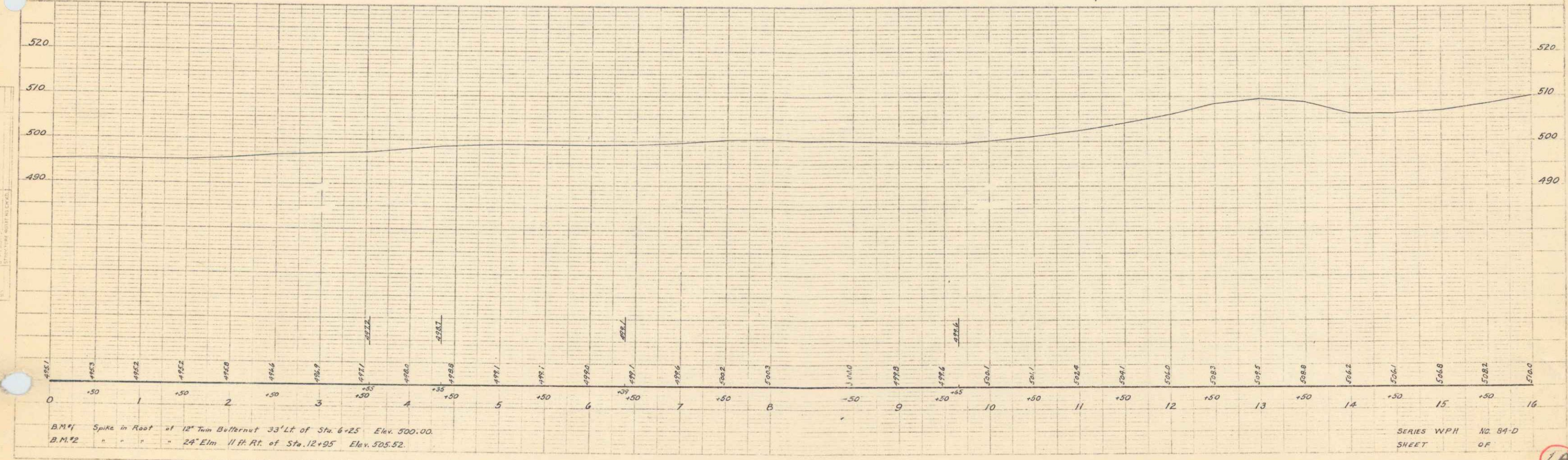
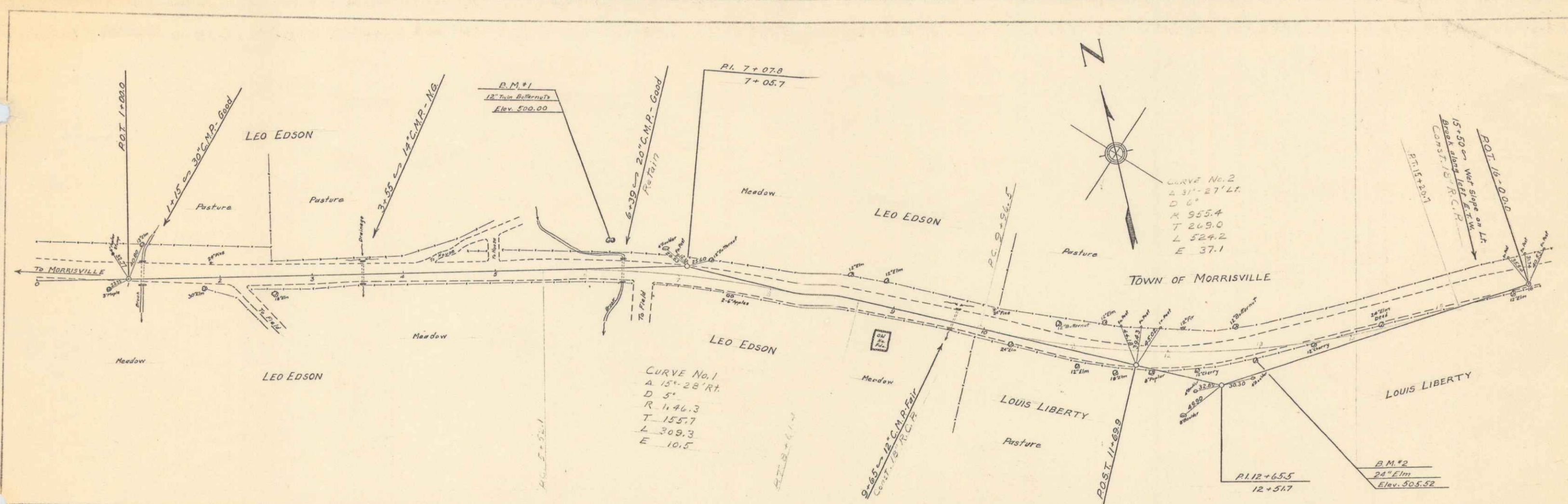
DEFLECTION ANGLE	Δ
DEGREE OF CURVE	D
RADIUS OF CURVE	R
TANGENT DISTANCE	T
LENGTH OF CURVE	L
EXTERNAL DISTANCE	E
POINT OF INTERSECTION	P. I.
POINT OF CURVE	P. C.
POINT OF TANGENT	P. T.
POINT ON TANGENT	P. O. T.

SCALES

TITLE	1" = 300'
TYPICAL	1" = 2'
PLAN	1" = 50'
PROFILE	1" = 10'
CROSS SECTIONS	1" = 5'

These plans are subject to such revisions as may be required by the Bureau of Public Roads or the Commissioner of Highways.
 Construction is to be carried on in accordance with the plans and Standard Road and Bridge Specifications of 1930, including all subsequent approved revisions, and such revised specifications and special provisions as are submitted with the plans.
 Attention of the contractor is called to the fact that the State Highway Board reserves the right to extend this project at the same contract prices. Said cost of extension not to exceed 25% of the amount of the contract.

CORRECTED: [Signature]
 SUPERVISOR
 CHECKED: [Signature]
 DISTRICT ENGINEER
 BUREAU OF PUBLIC ROADS
 SERIES W.P.H. NO. 84-D FILED
 SHEET 1 OF 14



ACTUAL CALLING
 DATE
 NO. OF SHEETS

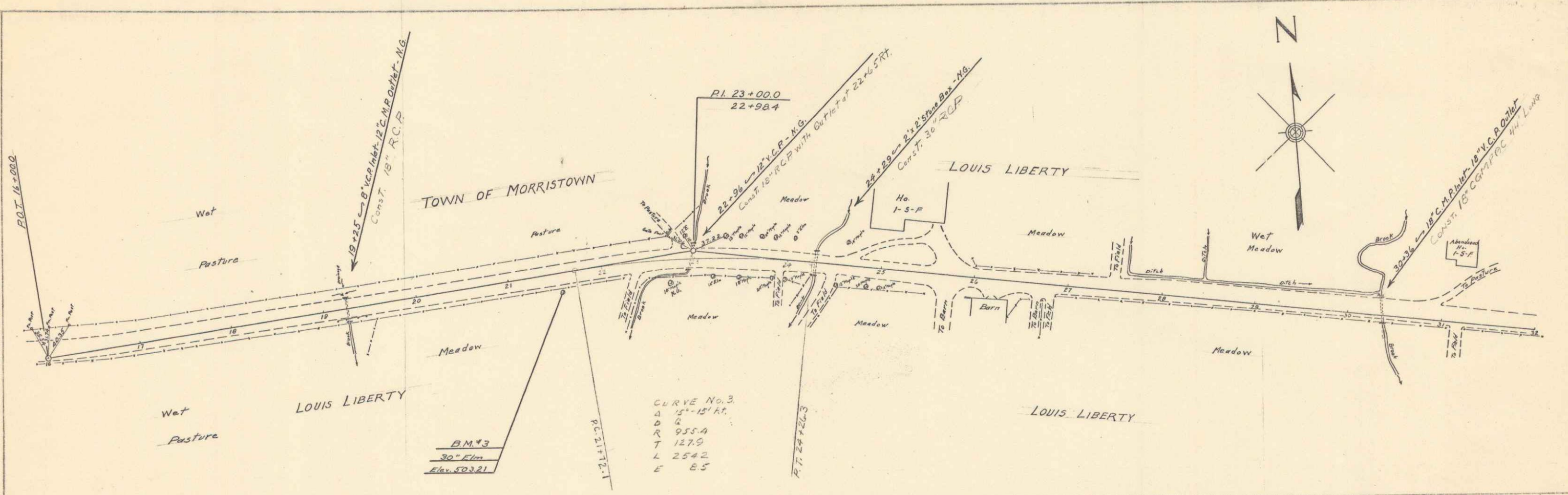
CURVE
 DATA

1A

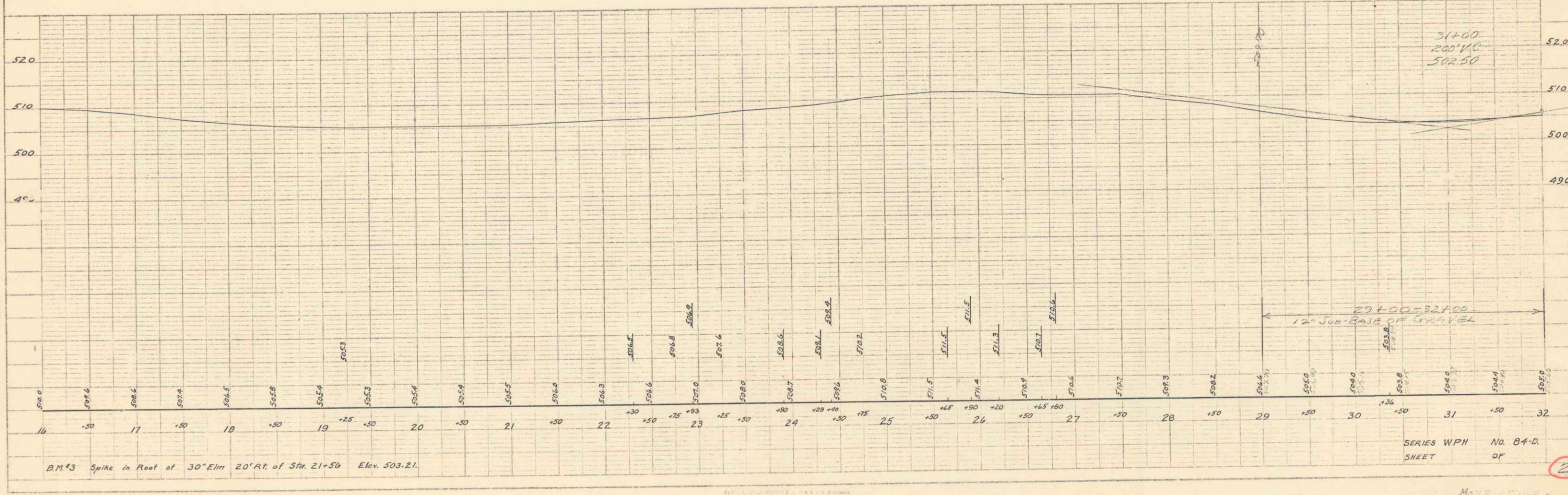
2

PLAN
 DATE 1914
 DRAWN BY
 CHECKED BY

PLAN
 DATE 1914
 DRAWN BY
 CHECKED BY



CURVE No. 3
 Δ $15^{\circ}-15'$ AT
 D 6
 AT 955.0
 T 127.0
 L 254.2
 E 8.5

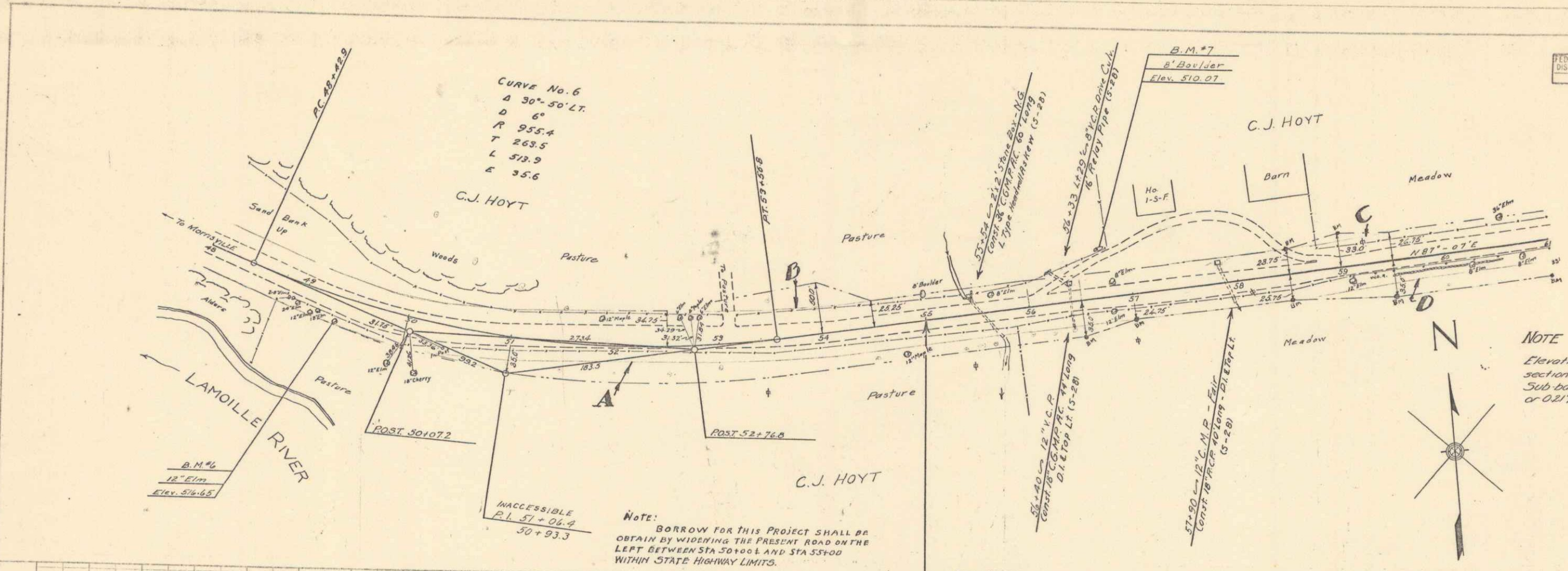


SERIES WPH No. 04-D
 SHEET OF 2

3

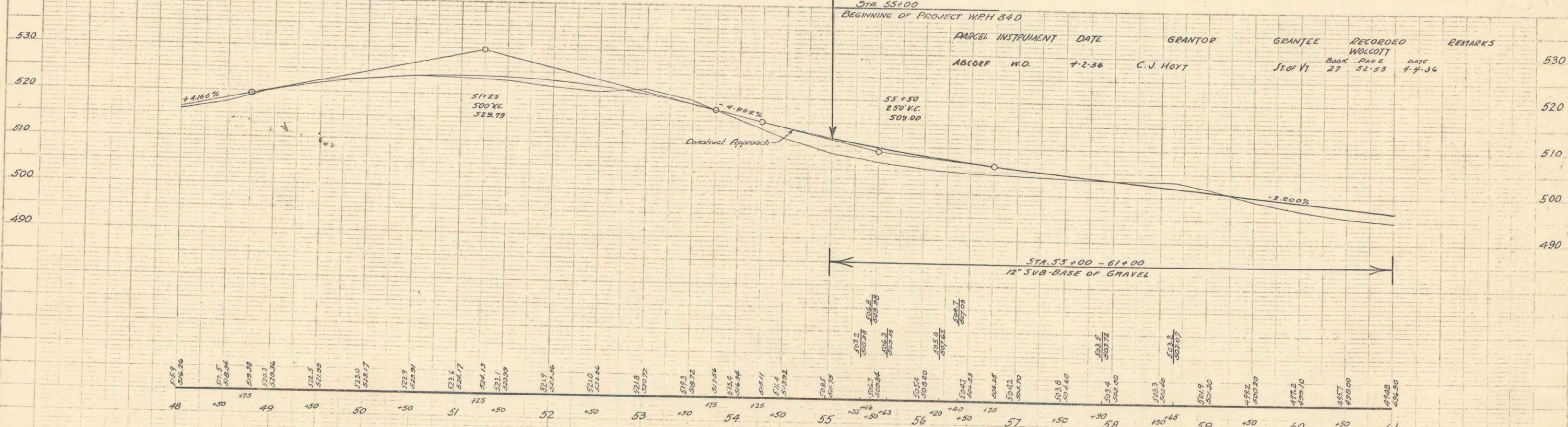
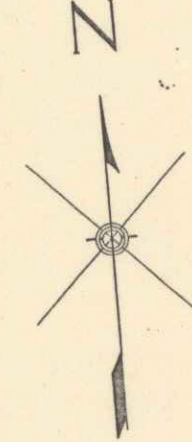
FED. ROAD DIST. NO.	STATE	W.P.M. YEAR	FISCAL YEAR	SHEET NO.	TOTAL SHEETS
84-D	Vt.	1936	4	14	

PLAN
 DATE
 DRAWN BY
 CHECKED BY
 SCALE



NOTE: BORROW FOR THIS PROJECT SHALL BE OBTAIN BY WIDENING THE PRESENT ROAD ON THE LEFT BETWEEN STA 50+00 AND STA 55+00 WITHIN STATE HIGHWAY LIMITS.

NOTE: Elevation shown on layouts and sections are for a finished grade. Sub-base grades are to be 2" or 0.2' lower.



PARCEL INSTRUMENT	DATE	GRANTOR	GRANTEE	RECORDED	REMARKS
ABCOEF	W.D.	4-2-36	C. J. HOYT	Book 27, Page 52-53	4-4-36

B.M.#6 Spike in Roof of 12" Elm 2.4' Rt. of Sta. 49+33 Elev. 516.65
 B.M.#7 Point Spot on 8" Boulder 47' Lt. of Sta. 56+73 Elev. 510.07

SERIES W.P.M. No. 84-D
 SHEET 4 OF 14

