

**INDEX OF SHEETS**

SHEET NO.	TITLE PAGE
2	TYPICAL CROSS-SECTION OF IMPROVEMENT (GRADING BASE, DRAINAGE & GUARD RAIL)
3	BARRIERS AND MARKING TABLES
4-5	PLAN AND PROFILE SHEETS
6	STANDARD STRUCTURE SHEET 328 PIPE CULVERTS
7	330 GUARD RAIL
8	331 BOUNDARY MARKERS
9	340 BARRIERS, SIGNS AND LIGHTS
10-14	CROSS SECTIONS

Standard Structure Sheet 328 Approved by the Chief Engineer on July 11, 1933  
 Standard Structure Sheet 330 Approved by the Chief Engineer on August 15, 1933  
 Standard Structure Sheet 331 Approved by the Chief Engineer on July 25, 1934

FED. ROAD DIST. NO.	STATE	W.P.H. PROJ. NO.	TOTAL SHEETS	SHEET NO.	TOTAL SHEETS
9	VT.	84-D	12	1	12

STATE OF VERMONT  
 STATE HIGHWAY DEPARTMENT

PLAN AND PROFILE OF PROPOSED  
 STATE HIGHWAY

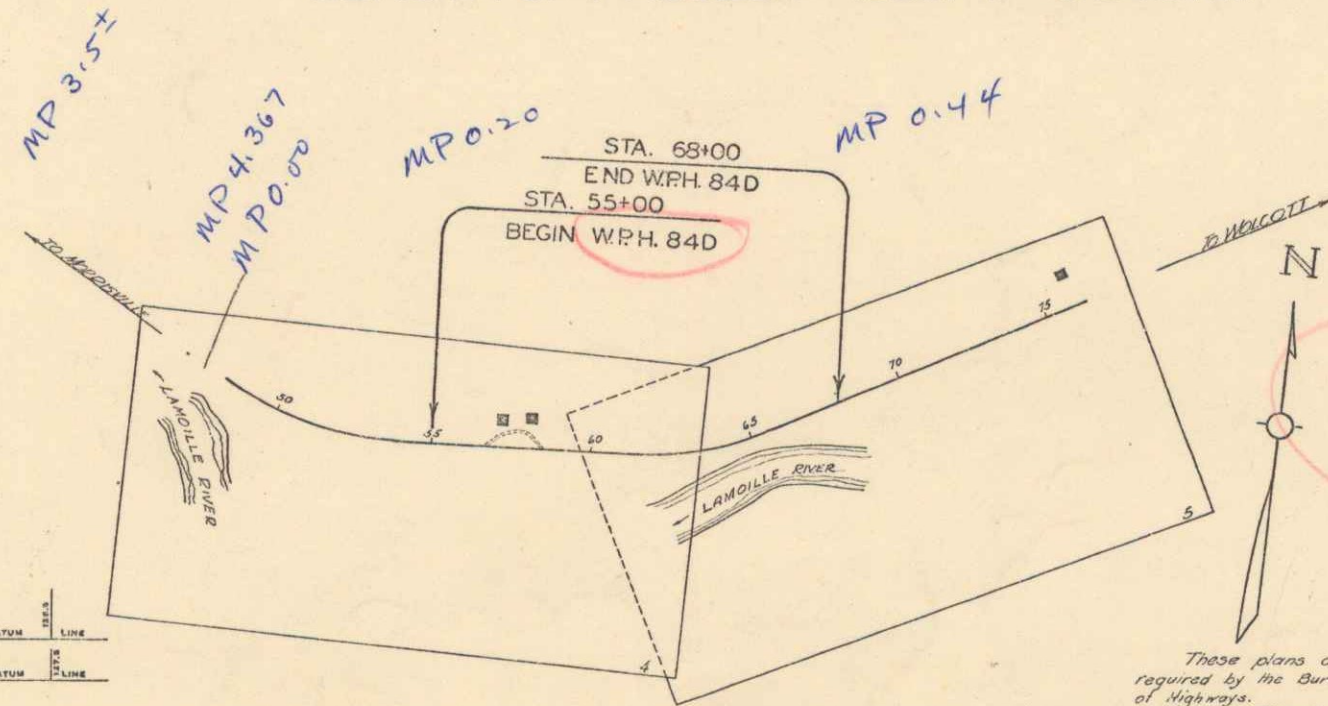
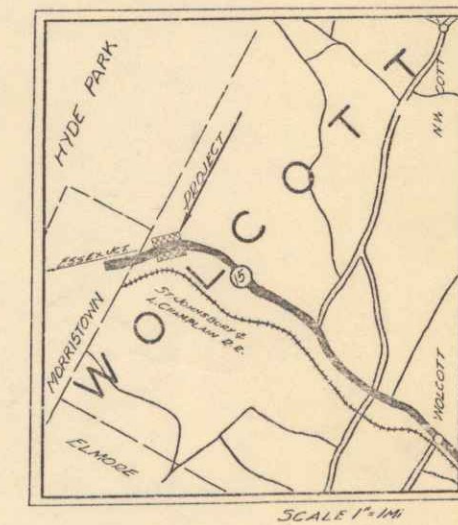
U.S. WORKS PROGRAM HIGHWAY PROJECT (W.P.H. 84-D)

TOWN OF WOLCOTT Pin# 00R278

MORRISVILLE—HARDWICK ROAD

FROM A POINT 250 FT. WEST OF THE HOUSE OF C. J. HOYT  
 EASTERLY 0.246 MI.

LENGTH OF PROJECT 1300 FT. = 0.246 MI.



RIGHT-OF-WAY DIVISION  
 TOWN FILE  
 PERPETUAL  
 Town of Wolcott  
 (To Be Returned To R.O.W. Division)

APPROVED: DEC. 30, 1935  
 H.E. Sargent  
 Commissioner of Highways  
 SUBMITTED BY ORDER OF THE STATE HIGHWAY BOARD

**CONVENTIONAL SIGNS**

COUNTY LINE	GROUND ELEVATION
TOWN LINE	FENCE LINE
FENCE LINE	STONE WALL
UNFENCED PROPERTY	RAILROAD
GUARD RAIL	TRAVELED WAY
RAILROAD	RETAINING WALL
RETAINING WALL	CENTER LINE
CENTER LINE	SURVEY LINE
SURVEY LINE	CULVERT
CULVERT	DROP INLET
DROP INLET	TROLLEY POLE
TROLLEY POLE	POWER POLE
POWER POLE	TELEPHONE POLE
TELEPHONE POLE	TREES
TREES	HEDGE

**CURVE DATA**

DEFLECTION ANGLE	Δ
DEGREE OF CURVE	D
RADIUS OF CURVE	R
TANGENT DISTANCE	T
LENGTH OF CURVE	L
EXTERNAL DISTANCE	E
POINT OF INTERSECTION	P. I.
POINT OF CURVE	P. C.
POINT OF TANGENT	P. T.
POINT ON TANGENT	P. O. T.

**SCALES**

TITLE	1" = 300'
TYPICAL	1" = 2'
PLAN	1" = 50'
PROFILE	1" = 10'
CROSS-SECTIONS	1" = 5'

These plans are subject to such revisions as may be required by the Bureau of Public Roads or the Commissioner of Highways.  
 Construction is to be carried on in accordance with the plans and Standard Road and Bridge Specifications of 1930, including all subsequent approved revisions, and such revised specifications and special provisions as are submitted with the plans.  
 Attention of the contractor is called to the fact that the State Highway Board reserves the right to extend this project at the same contract prices. Said cost of extension not to exceed 25% of the amount of the contract.

CORRECTED: [Signature]  
 SUPERVISOR  
 CHECKED: [Signature]  
 DISTRICT ENGINEER  
 BUREAU OF PUBLIC ROADS  
 SERIES W.P.H. NO. 84-D FILED  
 SHEET 1 OF 14