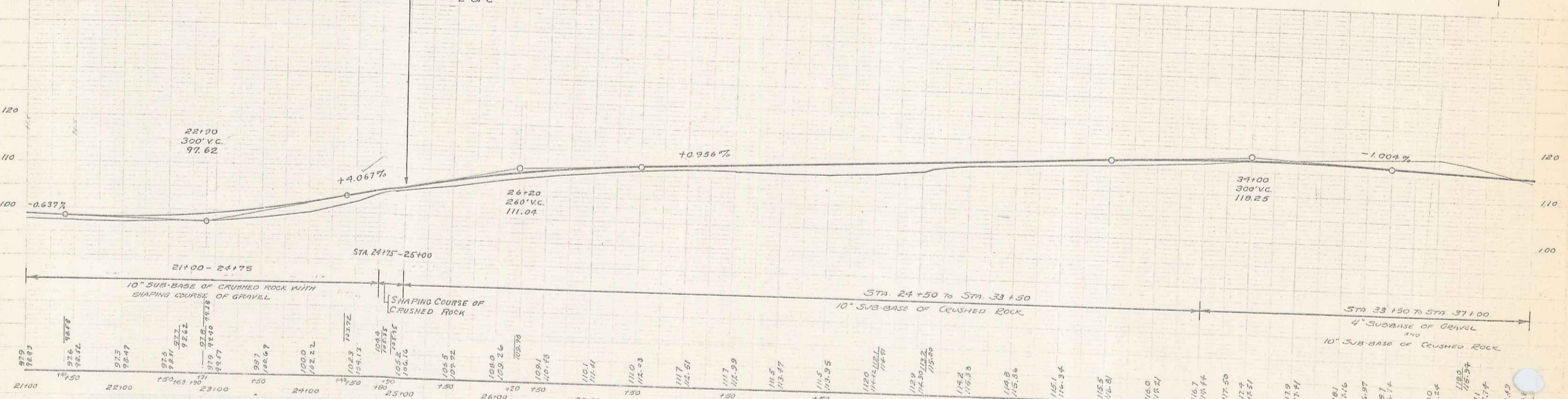
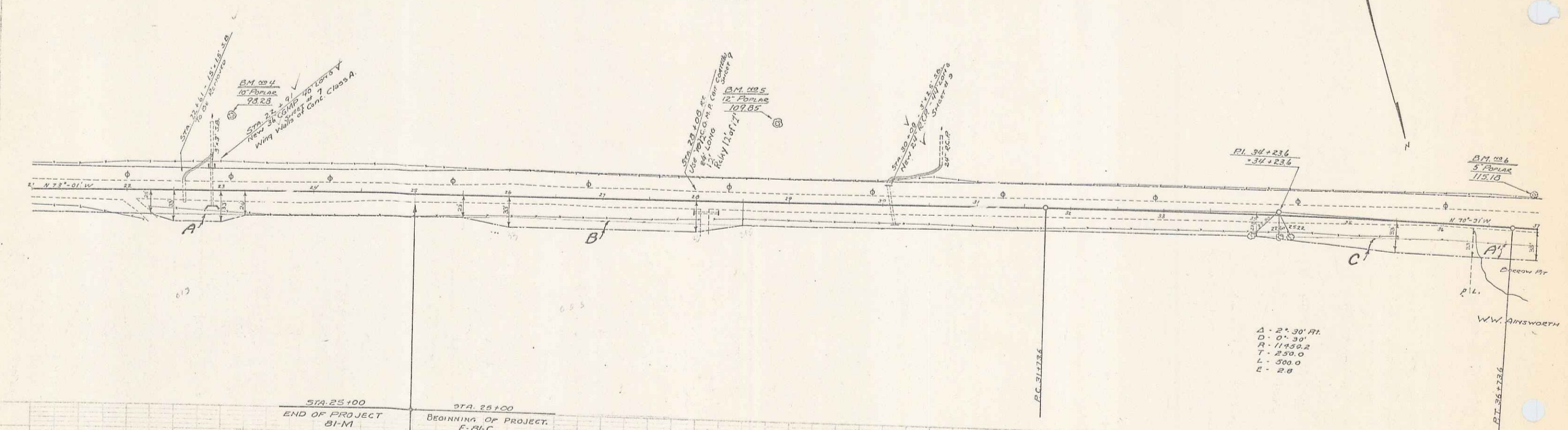


Parcel	Kind of Instrument	Date of Instrument	Grantor	Grantee	Recorded	Remarks
A, B, C	OGD	2-10-33	C.C. Farrington	Stetson	Ask Page	1-17-33
"	"	2-10-33	W.W. Arnswoehr	"	6/8-9	2-17-33

STATE OF MISSISSIPPI  
 81.M.1933 G. 15



Station	Elevation	Station	Elevation	Station	Elevation	Station	Elevation
2100	98.28	2200	98.47	2300	98.57	2400	102.22
2150	98.57	2250	102.22	2350	102.22	2450	102.22
2200	98.47	2300	98.57	2400	102.22	2500	102.22
2250	102.22	2350	102.22	2450	102.22	2550	102.22
2300	98.57	2400	102.22	2500	102.22	2600	102.22
2350	102.22	2450	102.22	2550	102.22	2650	102.22
2400	102.22	2500	102.22	2600	102.22	2700	102.22
2450	102.22	2550	102.22	2650	102.22	2750	102.22
2500	102.22	2600	102.22	2700	102.22	2800	102.22
2550	102.22	2650	102.22	2750	102.22	2850	102.22
2600	102.22	2700	102.22	2800	102.22	2900	102.22
2650	102.22	2750	102.22	2850	102.22	2950	102.22
2700	102.22	2800	102.22	2900	102.22	3000	102.22
2750	102.22	2850	102.22	2950	102.22	3050	102.22
2800	102.22	2900	102.22	3000	102.22	3100	102.22
2850	102.22	2950	102.22	3050	102.22	3150	102.22
2900	102.22	3000	102.22	3100	102.22	3200	102.22
2950	102.22	3050	102.22	3150	102.22	3250	102.22
3000	102.22	3100	102.22	3200	102.22	3300	102.22
3050	102.22	3150	102.22	3250	102.22	3350	102.22
3100	102.22	3200	102.22	3300	102.22	3400	102.22
3150	102.22	3250	102.22	3350	102.22	3450	102.22
3200	102.22	3300	102.22	3400	102.22	3500	102.22
3250	102.22	3350	102.22	3450	102.22	3550	102.22
3300	102.22	3400	102.22	3500	102.22	3600	102.22
3350	102.22	3450	102.22	3550	102.22	3650	102.22
3400	102.22	3500	102.22	3600	102.22	3700	102.22
3450	102.22	3600	102.22	3700	102.22		

B.M. #4 SPIKE IN ROOT 10" POPULAR, 76 FT. LT. STA. 23120 ELEV. 98.28  
 B.M. #5 SPIKE IN ROOT 12" POPULAR 60 FT. LT. STA. 28182 ELEV. 109.85  
 B.M. #6 SPIKE IN ROOT 5" POPULAR 33 FT. LT. STA. 36195 ELEV. 115.18

SERIES F. MAENIC SERIES F. No. 81-M  
 SHEET 5 OF 22 SHEET 6 OF 15