

INDEX OF SHEETS

SHEET NO. 1	TITLE PAGE
" 2	TYPICAL CROSS-SECTION OF IMPROVEMENT (24' GRAVEL)
" 3	PLAN AND PROFILE STA. 0+00 TO 6+00
" 4	PLAN AND PROFILE STA. 6+00 TO 12+00
" 5	S.T.B. 20 NO. 40 (MODIFIED FOR 30° SKEW)
" 6	S.A.G. T&I. - 30° SKEW (ABUT. NO. 1, H=11.0'±; ABUT. NO. 2, H=10.0'±)
" 7	S.B.2-STD DETAILS, S202, S204, S208, S220, S221, S203 (varies)
" 8	S.B.2A " " S223, S227, S232
" 9	S.B.2B " " S241, S243
" 10	S.B.3-SKEW ENDS (30° SKEW)
" 11	S.B.5-STD CABLE RAIL
" 12	S.B.11-BARRICADES, ETC.
" 13	STD. STRUCTURES, SERIES, S NO. 30
" 14-15	CROSS SECTIONS

FED. ROAD DIST. NO.	STATE	FED. AID PROGRAM	FISCAL YEAR	SHEET NO.	TOTAL SHEETS
9	Vt.	ED-1-D	1933	1	15

STATE OF VERMONT  
STATE HIGHWAY DEPARTMENT

PLAN AND PROFILE OF PROPOSED  
STATE HIGHWAY

FEDERAL AID PROJECT

TOWN OF WALDEN *pin #00R274*

ROUTE 15

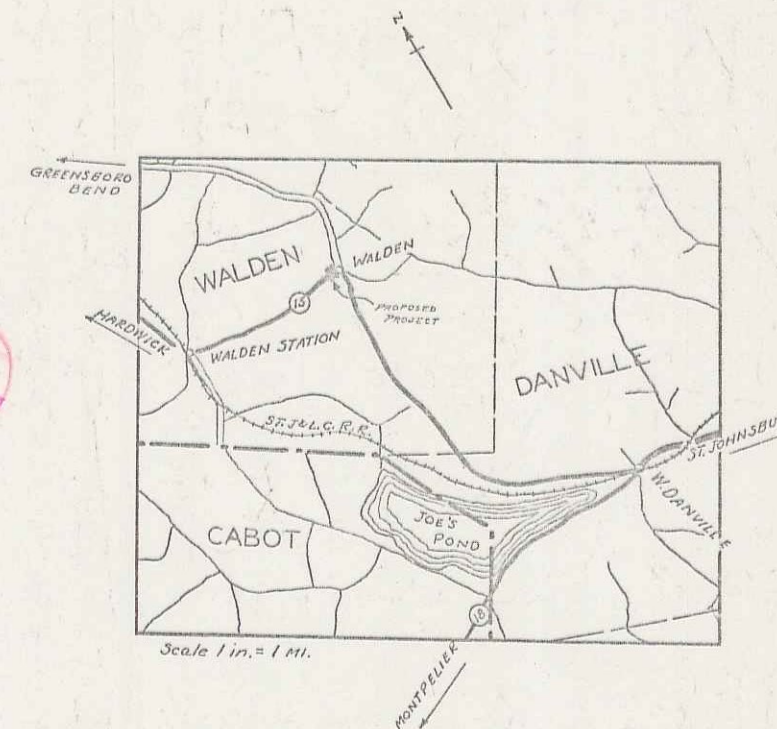
WALDEN HEIGHTS ROAD

BRIDGE LOCATED

3.7 MILES NORTHERLY OF JUNCTION

ROUTE NO. 18

LENGTH BRIDGE & APPROACHES 350 FEET = .066 MILES



*(To Be Returned to R.O.W. Division)*  
*Town of Walden*  
*Perpetual*  
*Right-of-Way Division*  
*Mr. S. J. ...*

SCALES

PLAN-----1 INCH=20 FEET  
PROFILE HORIZONTAL--1 .. =20 ..  
.. VERTICAL--1 .. =20 ..  
CROSS SECTIONS----1 .. = 5 ..

THESE PLANS ARE SUBJECT TO SUCH REVISIONS AS MAY BE REQUIRED BY THE BUREAU OF PUBLIC ROADS OR THE COMMISSIONER OF HIGHWAYS. CONSTRUCTION IS TO BE CARRIED ON IN ACCORDANCE WITH THE STANDARD ROAD AND BRIDGE SPECIFICATIONS OF 1930, WITH SUCH REVISED SPECIFICATIONS AND SPECIAL PROVISIONS AS ARE SUBMITTED WITH THESE PLANS.

Approved June 14, 1933  
SUBMITTED BY *H.E. Sargent* THE STATE HIGHWAY BOARD  
COMMISSIONER OF HIGHWAYS

CONVENTIONAL SIGNS	
COUNTY LINE	GROUND ELEVATION
TOWN LINE	DATUM
PERCE LINE	LINE
STONE WALL	GRADE ELEVATION
UNFENCED PROPERTY	DATUM
GUARD RAIL	LINE
TRAVELED WAY	
RAILROAD	
RESTAURANT	
GEN. LINE	
SURVEY LINE	
CLIFF	
TRUCK STOP	
TRUCK STOP	
POWER POLE	
TELEPHONE POLE	
TREES	
HEDGE	

CURVE DATA	
DEFLECTION ANGLE	Δ
DEGREE OF CURVE	D
RADIUS OF CURVE	R
TANGENT DISTANCE	T
LENGTH OF CURVE	L
EXTERNAL DISTANCE	E
POINT OF INTERSECTION	P. I.
POINT OF CURVE	P. C.
POINT OF TANGENT	P. T.
POINT ON TANGENT	P. O. T.

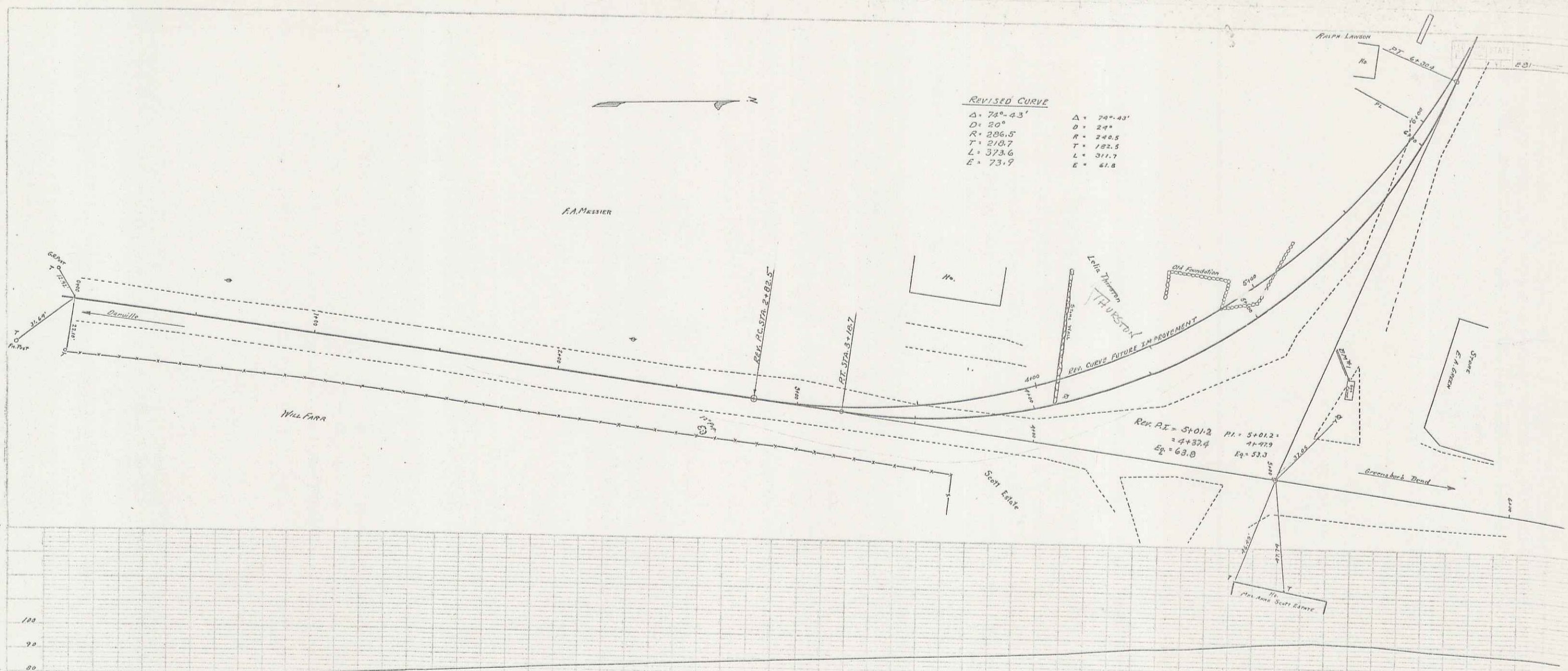
BRIDGE ON ROUTE NO. 15  
MILEAGE STA. 199+00

*Project NO. FAPE 81-D*

RECOMMENDED \_\_\_\_\_  
DISTRICT ENGINEER BUREAU OF PUBLIC ROADS  
RECOMMENDED FOR APPROVAL \_\_\_\_\_  
CHIEF ENGINEER BUREAU OF PUBLIC ROADS  
APPROVED \_\_\_\_\_  
DIRECTOR - BUREAU OF PUBLIC ROADS

SERIES F. NO. 81-D-FILED  
SHEET 1 OF 15

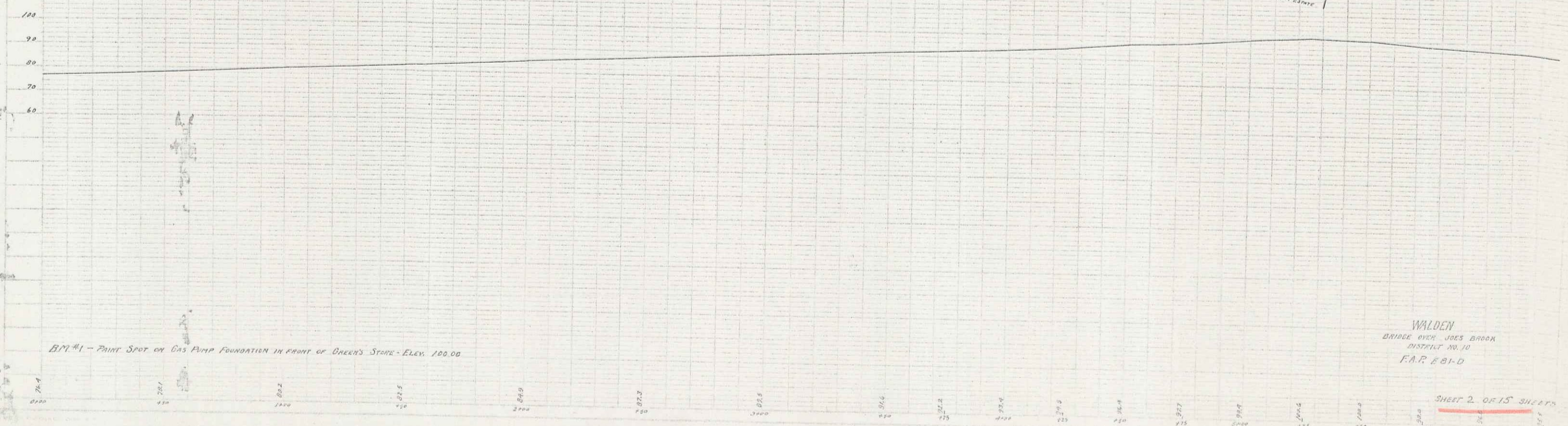
*DIST # 7-1*



**REVISED CURVE**

$\Delta = 74^{\circ} 43'$	$\Delta = 70^{\circ} 43'$
$D = 20^{\circ}$	$D = 24^{\circ}$
$R = 206.5$	$R = 248.5$
$T = 210.7$	$T = 182.5$
$L = 373.6$	$L = 311.7$
$E = 73.9$	$E = 41.8$

$PI = 5+01.2$   
 $PI = 5+01.2$   
 $Eq = 63.0$   
 $Eq = 53.0$



BPM #1 - POINT SPOT ON GAS PUMP FOUNDATION IN FRONT OF GREEN'S STORE - ELEV. 100.00

WALDEN  
 BRIDGE OVER JOES BROOK  
 DISTRICT NO. 10  
 F.A.P. 881-D

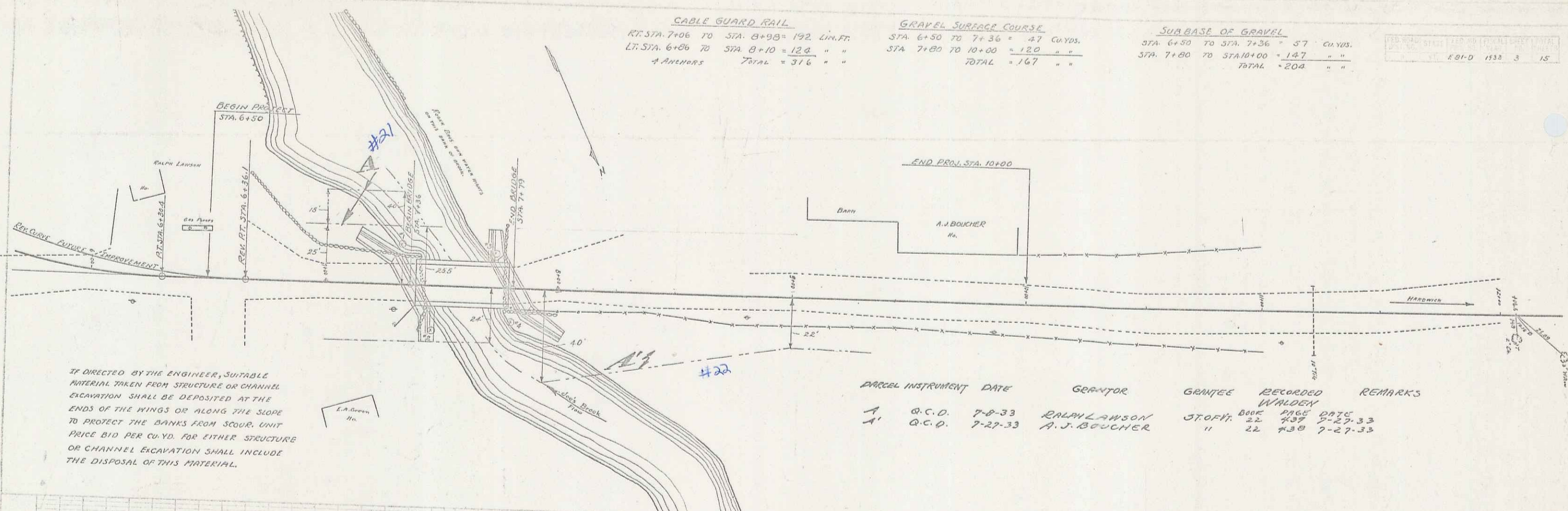
SHEET 2 OF 15 SHEETS

**CABLE GUARD RAIL**  
 RT. STA. 7+06 TO STA. 8+98 = 192 LIN. FT.  
 LT. STA. 6+86 TO STA. 8+10 = 124 " "  
 \* ANCHORS TOTAL = 316 " "

**GRAVEL SURFACE COURSE**  
 STA. 6+50 TO 7+36 = 87 CU YDS.  
 STA. 7+80 TO 10+00 = 120 " "  
 TOTAL = 207 " "

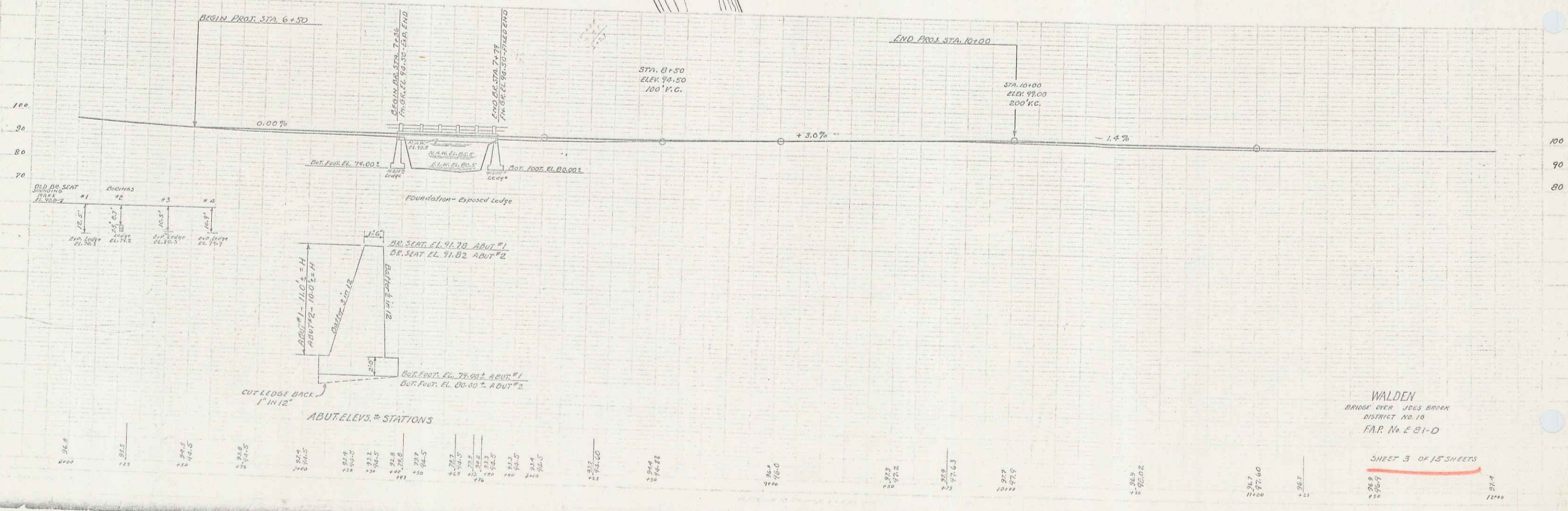
**SUBBASE OF GRAVEL**  
 STA. 6+50 TO STA. 7+36 = 87 CU YDS.  
 STA. 7+80 TO STA. 10+00 = 127 " "  
 TOTAL = 214 " "

STATION	STAKE	AREA	PERCENTAGE	TOTAL
ST. 601-D	1133	3	15	



IF DIRECTED BY THE ENGINEER, SUITABLE MATERIAL TAKEN FROM STRUCTURE OR CHANNEL EXCAVATION SHALL BE DEPOSITED AT THE ENDS OF THE KINGS OR ALONG THE SLOPE TO PROTECT THE BANKS FROM SCOUR. UNIT PRICE BID PER CU. YD. FOR EITHER STRUCTURE OR CHANNEL EXCAVATION SHALL INCLUDE THE DISPOSAL OF THIS MATERIAL.

PARCEL	INSTRUMENT	DATE	GRANTOR	GRANTEE	RECORDED	REMARKS
A	B.C.D.	7-8-33	RALPH LAWSON	STOFF	BOOK PAGE DATE	22 437 7-27-33
A'	O.C.D.	7-27-33	A. J. BOUCHER	"	22 438	7-27-33



WALDEN  
 BRIDGE OVER JESSE BROOK  
 DISTRICT NO. 10  
 F.A.R. No. E 81-D

SHEET 3 OF 15 SHEETS