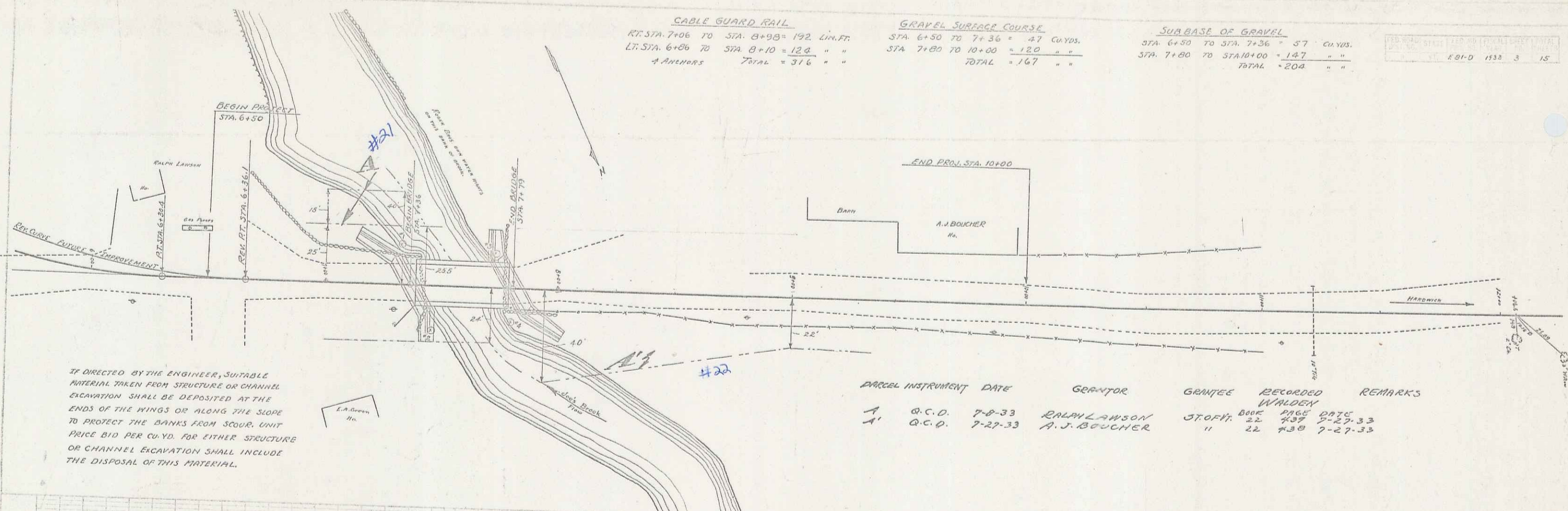


CABLE GUARD RAIL
 RT. STA. 7+06 TO STA. 8+98 = 192 LIN. FT.
 LT. STA. 6+86 TO STA. 8+10 = 124 " "
 * ANCHORS TOTAL = 316 " "

GRAVEL SURFACE COURSE
 STA. 6+50 TO 7+36 = 87 CU YDS.
 STA. 7+80 TO 10+00 = 120 " "
 TOTAL = 167 " "

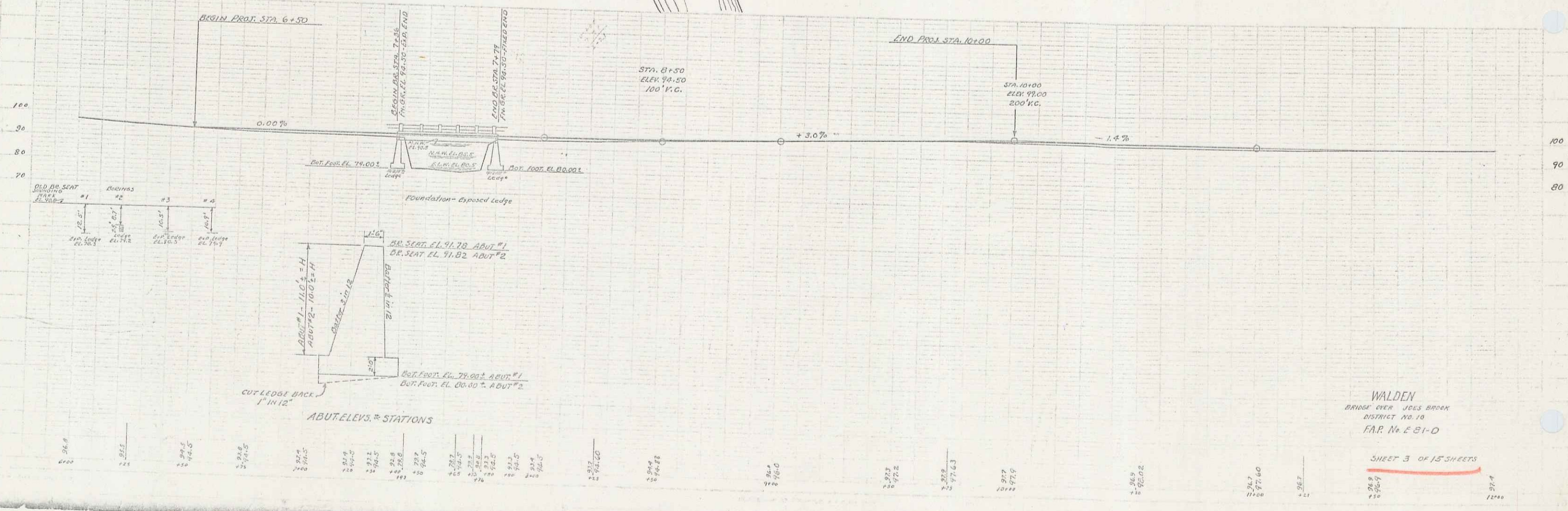
SUBBASE OF GRAVEL
 STA. 6+50 TO STA. 7+36 = 87 CU YDS.
 STA. 7+80 TO STA. 10+00 = 127 " "
 TOTAL = 204 " "

LINE	STAKE	AREA	PERCENTAGE	TOTAL
1	1	1	100	1
2	2	2	100	2
3	3	3	100	3
4	4	4	100	4
5	5	5	100	5
6	6	6	100	6
7	7	7	100	7
8	8	8	100	8
9	9	9	100	9
10	10	10	100	10
11	11	11	100	11
12	12	12	100	12
13	13	13	100	13
14	14	14	100	14
15	15	15	100	15



IF DIRECTED BY THE ENGINEER, SUITABLE MATERIAL TAKEN FROM STRUCTURE OR CHANNEL EXCAVATION SHALL BE DEPOSITED AT THE ENDS OF THE KINGS OR ALONG THE SLOPE TO PROTECT THE BANKS FROM SCOUR. UNIT PRICE BID PER CU. YD. FOR EITHER STRUCTURE OR CHANNEL EXCAVATION SHALL INCLUDE THE DISPOSAL OF THIS MATERIAL.

PARCEL	INSTRUMENT	DATE	GRANTOR	GRANTEE	RECORDED	REMARKS
A	B.C.D.	7-8-33	RALPH LAWSON	STOFF	BOOK PAGE DATE	22 437 7-27-33
A'	Q.C.D.	7-27-33	A.J. BOUCHER	"	22 438	7-27-33



WALDEN
 BRIDGE OVER JOES BROOK
 DISTRICT NO. 10
 F.A.R. No. E 81-0

SHEET 3 OF 15 SHEETS