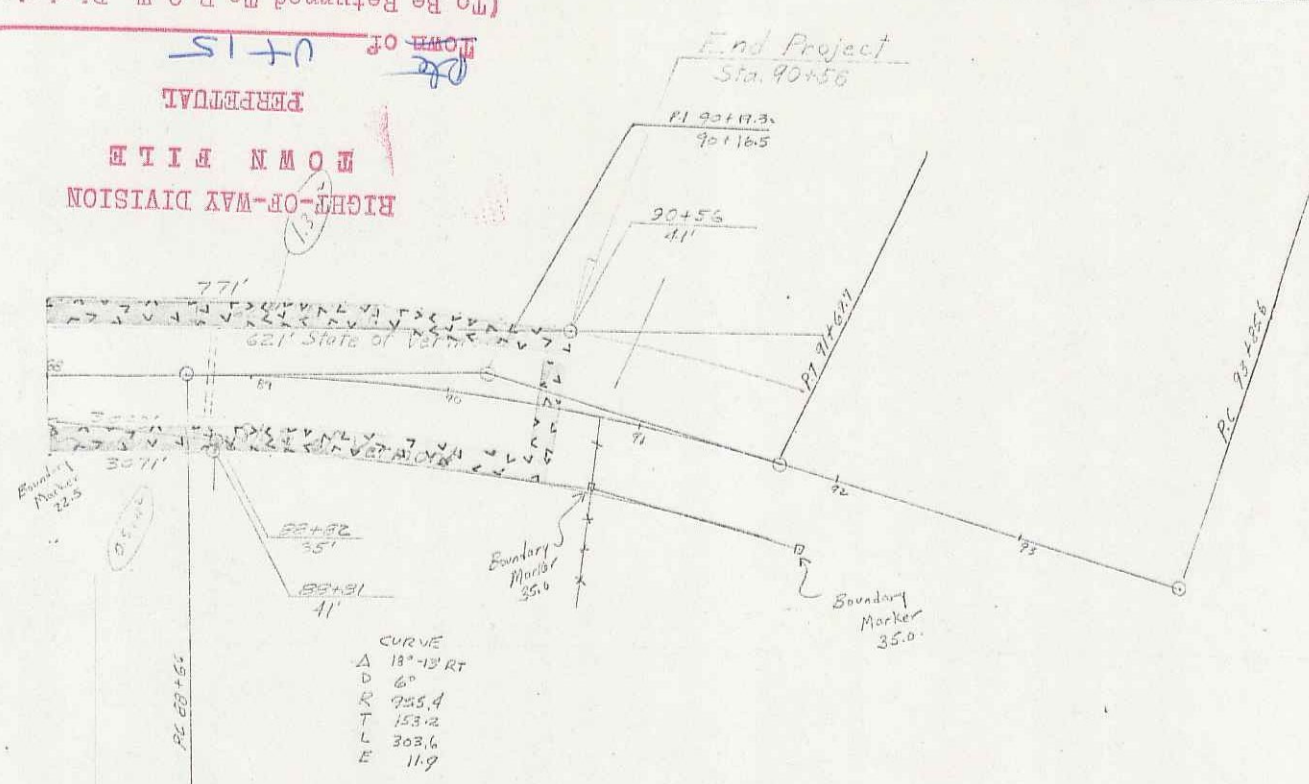


Walden

(To Be Returned To R.O.W. Division)

DOWN R.I.T.E.
PERPETUAL
RIGHT-OF-WAY DIVISION
Town of UTIS



M.P. 3.60 ± - 4.40 ±

PLAN	DATE
REVISED	BY
NOTED	BY
NO. OF SHEETS	
NO. OF SHEETS CHECKED	
NO.	

TABLE	DATE
REVISED	BY
NOTED	BY
NO. OF SHEETS	
NO. OF SHEETS CHECKED	
NO.	

PLATE 1 - PLAN - PROFILE OR P.A.A.S. DRAWING
K & E CO. NO. 255-T

Sheet 10 of 40
10A 14