

INDEX OF SHEETS

SHEET NO. 1	TITLE PAGE
" 2	TYPICAL CROSS-SECTION OF IMPROVEMENT OR STONE MIXED-IN-PLACE SURFACE COURSE WITH CUT BACK ASPHALT CRUSHED GRAVEL BASE COURSE
" 3	BANKING & WIDENING TABLES
" 4-10	PLAN & PROFILE SHEETS
" 11	STANDARD STRUCTURE SHEET 8-30 GRAD RAIL, GUYE POSTS
" 12	STANDARD STRUCTURE SHEET 8-40 BRACKENBERRY SIGNS AND LIGHTS
" 13	STANDARD STRUCTURE SHEET 8-50 APPROVED BY THE CHIEF ENGINEER, AUGUST 15, 1933

FED. ROAD DIST. NO.	STATE	FED. AID PROJ. NO.	FISCAL YEAR	SHEET NO.	TOTAL SHEETS
9	VT.	81-G	1936	1	12

STATE OF VERMONT
STATE HIGHWAY DEPARTMENT

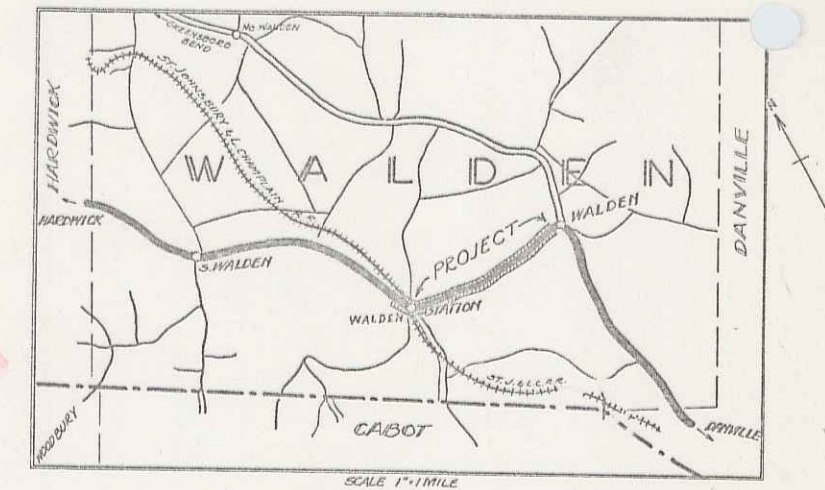
PLAN AND PROFILE OF PROPOSED
STATE HIGHWAY

FEDERAL AID PROJECT

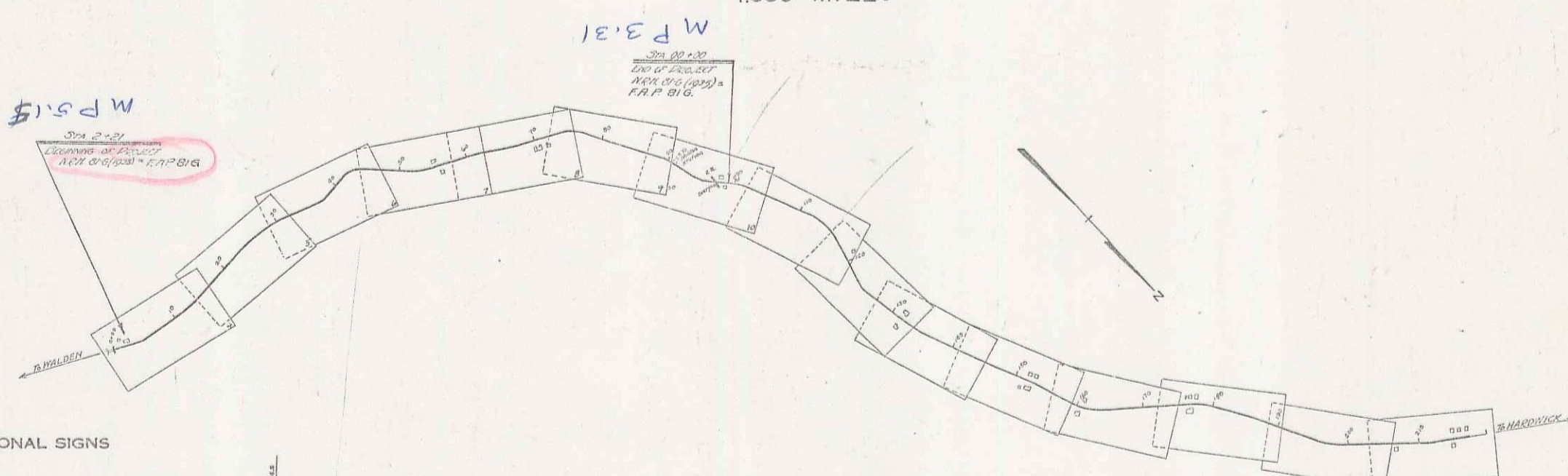
TOWN OF WALDEN *Pin # 000273*
WALDEN-HARDWICK ROAD *Rte. VT 15*

FROM THE RESIDENCE OF A.J. BOUCHER
WESTERLY 1.838 MILES TO 225
FEET WEST OF UNDERPASS

LENGTH OF PROJECT $9706 \frac{55}{100}$ FEET =
1.838 MILES



(To Be Returned To R.O.W. Division)
Form of *UT-15*
PERMIT
HIGHWAY DIVISION



CONVENTIONAL SIGNS

COUNTY LINE	GROUND ELEVATION
TOWN LINE	FENCE LINE
STONE WALL	UNFENCED PROPERTY
UNFENCED PROPERTY	GUARD RAIL
GUARD RAIL	TRAVELED WAY
TRAVELED WAY	RAILROAD
RAILROAD	RETAINING WALL
RETAINING WALL	CENTER LINE
CENTER LINE	SURVEY LINE
SURVEY LINE	CULVERT
CULVERT	DROP INLET
DROP INLET	TROLLEY POLE
TROLLEY POLE	POWER POLE
POWER POLE	TELEPHONE POLE
TELEPHONE POLE	TREES
TREES	HEDGE

CURVE DATA

DEFLECTION ANGLE	Δ
DEGREE OF CURVE	D
RADIUS OF CURVE	R
TANGENT DISTANCE	T
LENGTH OF CURVE	L
EXTERNAL DISTANCE	E
POINT OF INTERSECTION	P. I.
POINT OF CURVE	P. C.
POINT OF TANGENT	P. T.
POINT ON TANGENT	P. O. T.

SCALE

TITLE	1"=1000'
PLAN	1"=50'
PROFILE	1"=10'

These plans are subject to such revisions as may be required by the Bureau of Public Roads and the Commissioner of Highways. Construction is to be carried on in accordance with the plans and standard road and bridge specifications of 1930 including all subsequent approved revisions and such revised specifications and special provisions as are submitted with the plans.

APPROVED: *AUG. 13 1934 (April 15, 1936)*
W. H. ...
COMMISSIONER OF HIGHWAYS
SUBMITTED BY ORDER OF THE STATE HIGHWAY BOARD

RECOMMENDED
DISTRICT ENGINEER
RECOMMENDED FOR APPROVAL
CHIEF ENGINEER
APPROVED
DIRECTOR BUREAU OF PUBLIC ROADS

** PLOT SET
INCLUDES
ADDITIONAL SHEETS*

CORRECT *AUG. 13 1934*
SERIES 88-816 FILED
SHEET 1 OF 12

DIST # 7