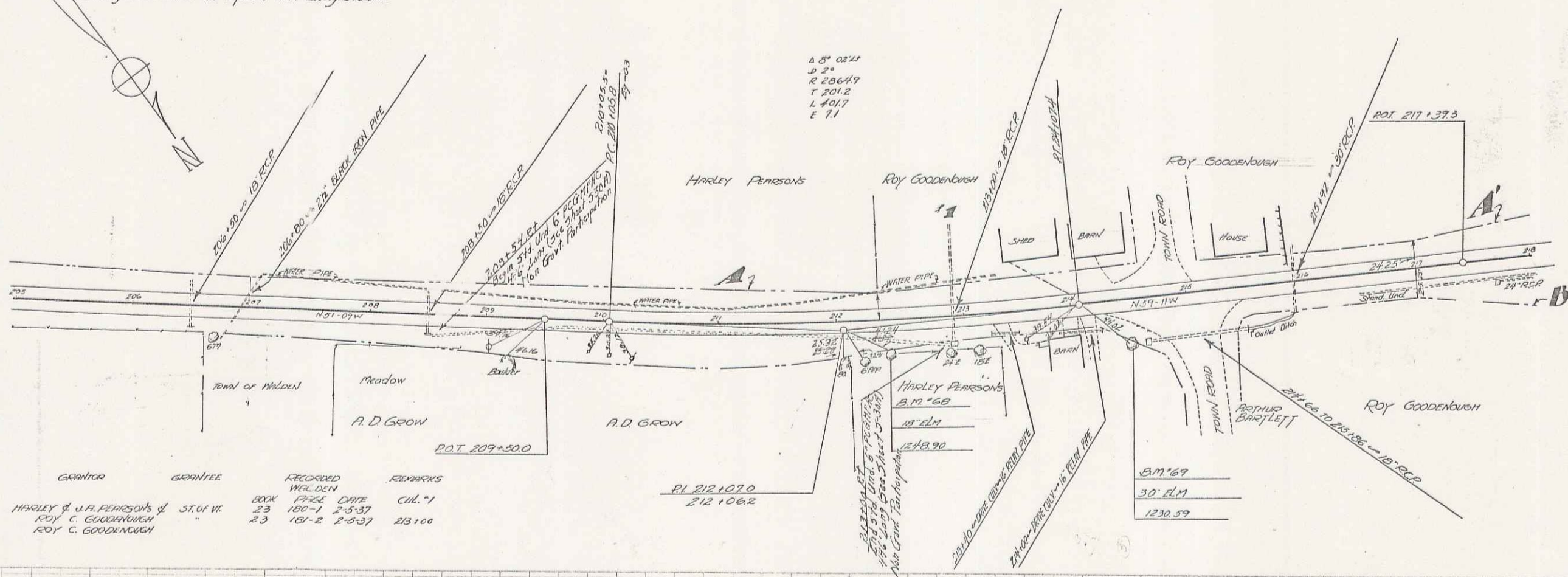
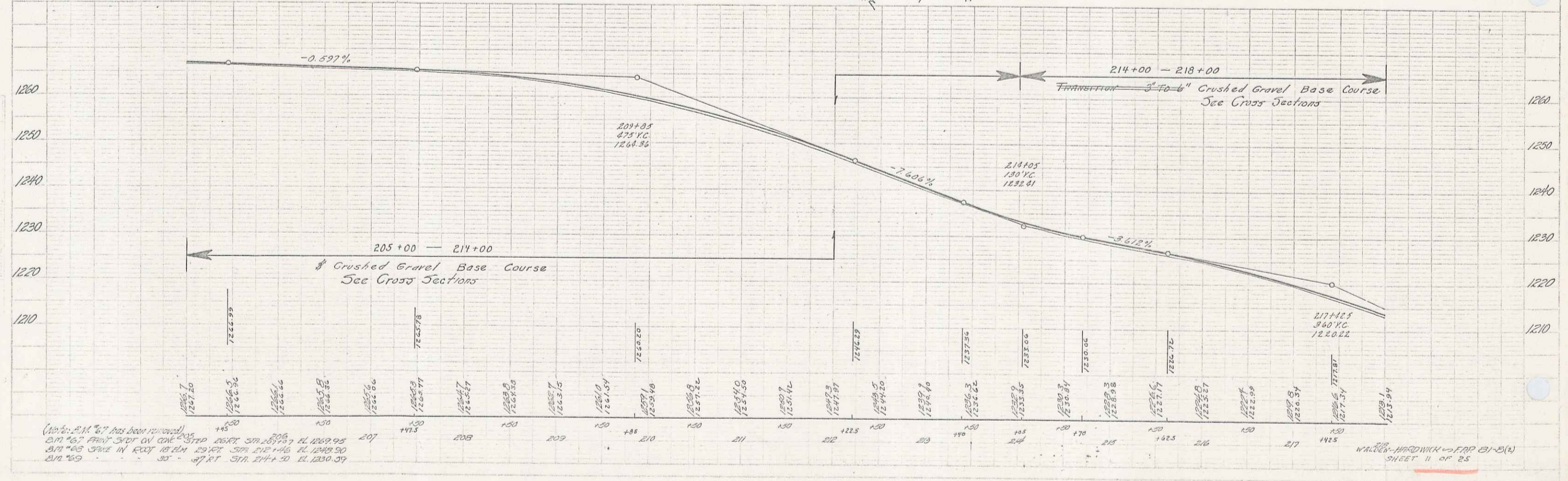


Sta 200+35-212+25
Existing base removed and replaced with heavy sub-base

818(2) 1940 11 25



FARCEL	KIND OF INSTRUMENT	DATE OF INSTRUMENT	GRANTOR	GRANTEE	RECORDED	REMARKS
A	Q.C.D.	1-28-37	HARLEY & U.R. PARSONS & ST. W.	ROY C. GOODENBUSH	BOOK 23 PAGE 180-1	2-3-37
A'B	Q.C.D.	1-28-37	ROY C. GOODENBUSH	ROY C. GOODENBUSH	BOOK 23 PAGE 181-2	2-3-37



(Note: P.M. 67 has been removed)
 207 1269.95
 208 1269.90
 209 1269.85
 210 1269.80
 211 1269.75
 212 1269.70
 213 1269.65
 214 1269.60
 215 1269.55
 216 1269.50
 217 1269.45
 218 1269.40

WALTON-HARDWICK - MAP 81-2(A)
SHEET 11 OF 25