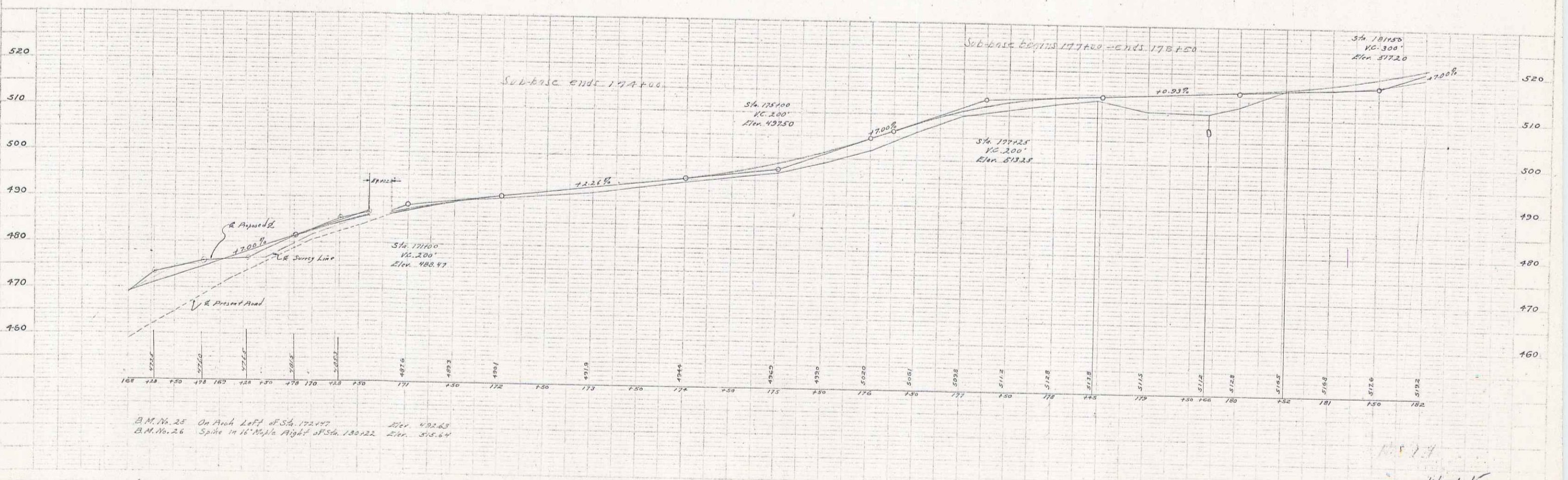
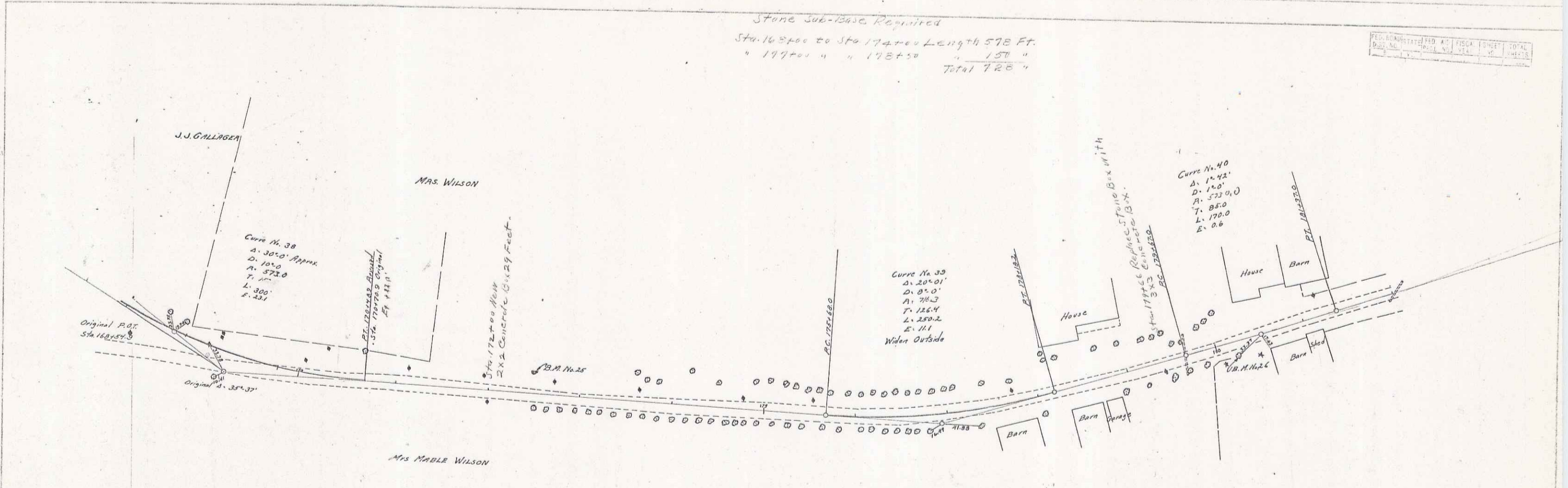


Stone Sub-base Required
 Sta. 16800 to Sta 17200 Length 578 Ft.
 " 19900 " " 17800 " 157 "
 Total 735 "

PER. ENGINEER	PROJ. NO.	TOTAL SHEETS	TOTAL SHEETS

W. H. WALKER
 D. L. LAND
 3/17/23

W. H. WALKER
 D. L. LAND
 G. K. CHASE
 3/17/23



B.M. No. 25 On Arch Left of Sta. 17247 Elev. 492.65
 B.M. No. 26 Spike in 16' Maple Right of Sta. 13022 Elev. 514.64

14 of 45 42