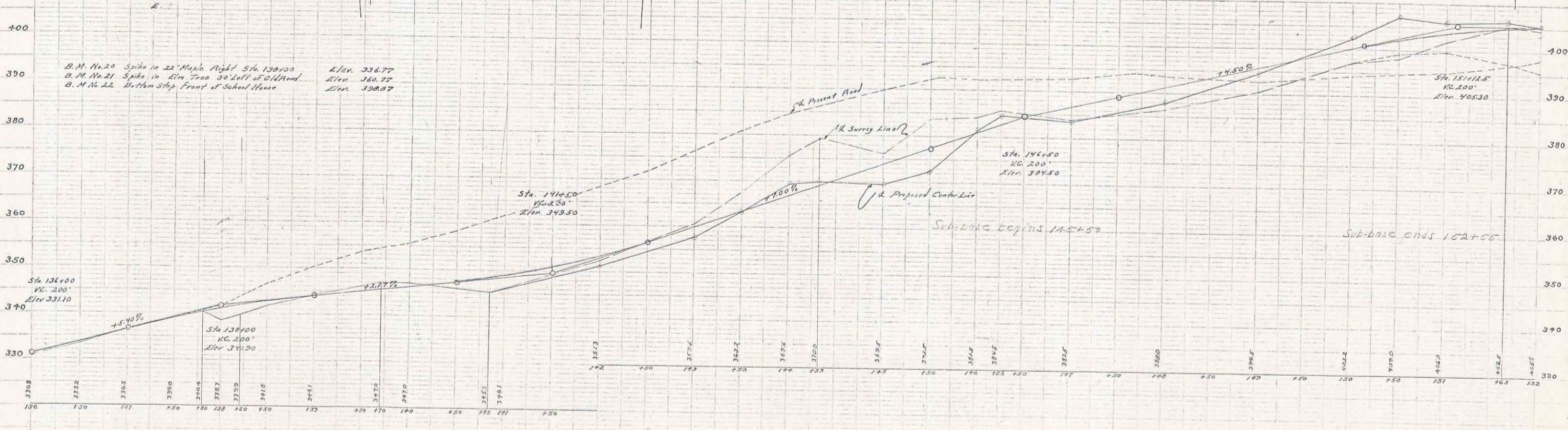
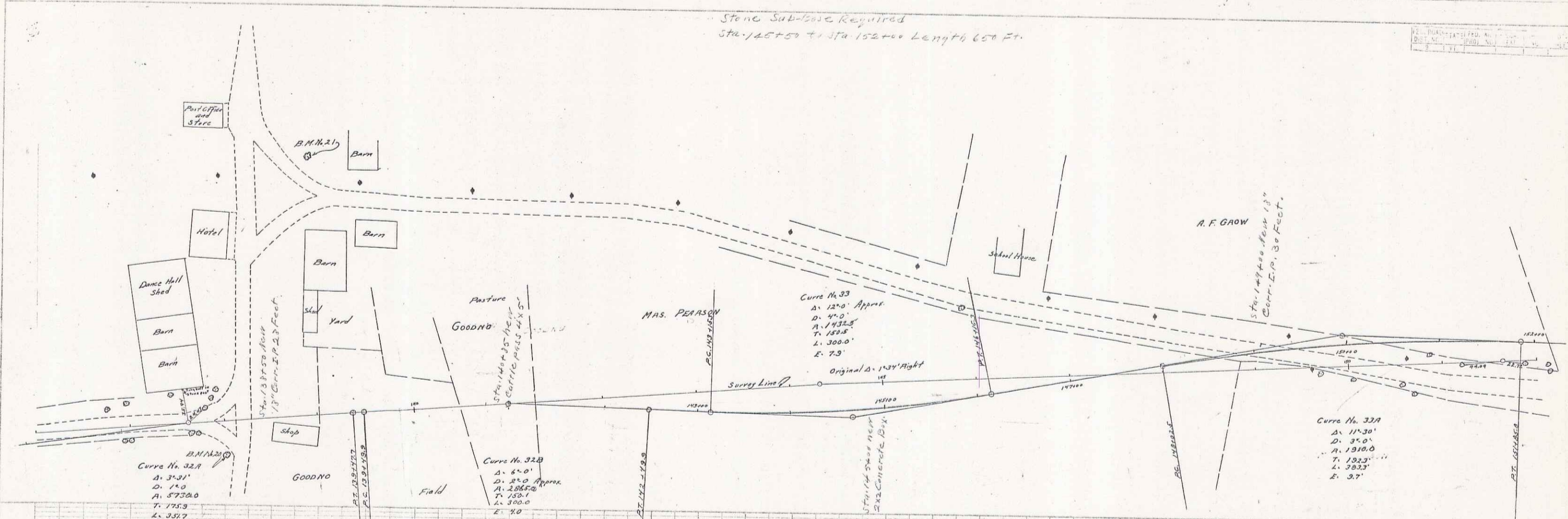


Stone Sub-base Required
Sta. 145+50 to Sta. 152+50 Length 650 Ft.

PL. 1000-1000-1000
DATE: 10/10/1912
BY: [Signature]



10/10/1912
C. E. Wood
D. L. Bond

10/10/1912
C. E. Wood
D. L. Bond

Series F. No.
Sheet 12 45

40