

**WOODEN GUARD RAIL REQUIRED**

Sta.	ON LEFT	Length
Sta. 13+00	to Sta. 14+00	200 FT
Sta. 14+00	to Sta. 22+12	812 FT
Sta. 24+06	to Sta. 27+00	294 FT
<b>TOTAL THIS SHEET 1002 FT.</b>		

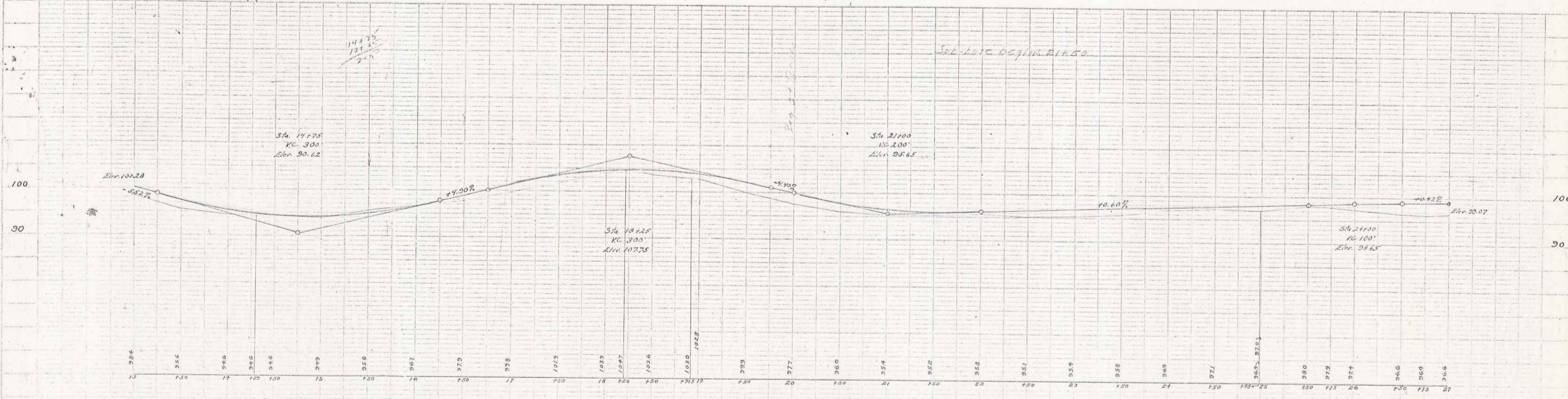
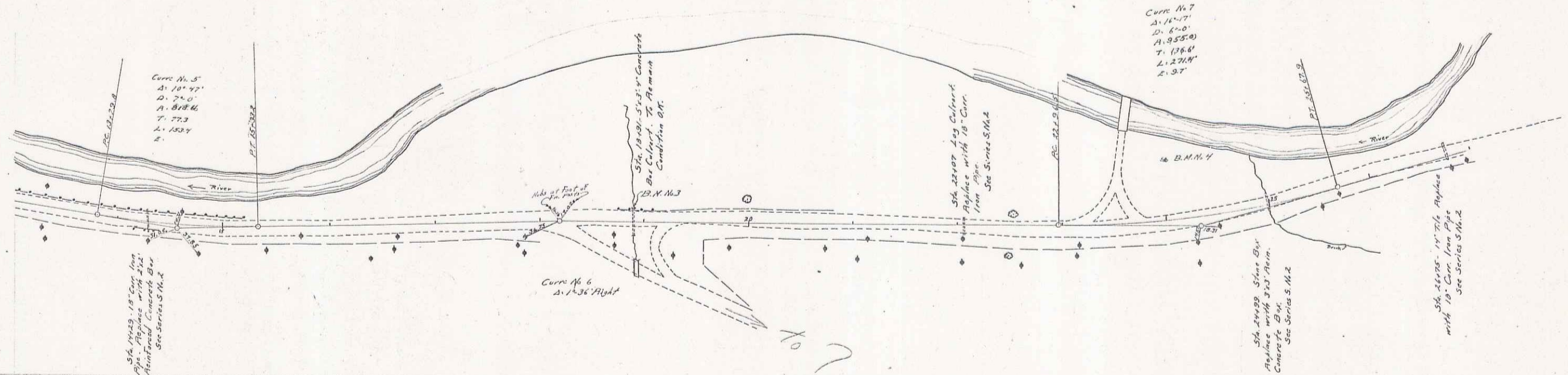
**NEW CULVERTS REQUIRED**

Sta. 14+29	2'x2' Reinforced Concrete Box	3.2 cu yd
	1-2.5 Concrete	9.7 "
	Reinforcing Steel	14.4 lb.
Sta. 22+07	18" Cor. Iron Pipe Length 30 FT	
	1-2.5 Concrete	2.3 cu yd.
Sta. 24+99	3'x3' Reinforced Concrete Box	
	1-2.4 Concrete	3.8 cu yd.
	1-2.5 Concrete	22.4 "
	Reinforcing Steel	196 lb.
Sta. 26+75	18" Cor. Iron Pipe Length 30 FT	
	1-2.5 Concrete	2.3 cu yd.

**SUB-BASE REQUIRED**

Sta. 27+50 to Sta. 27+00 Length 500 FT

NO.	DATE	BY	REVISION
1			
2			
3			
4			
5			



B.M. No. 3 S.W. Corner of N. Highway Culvert Sta. 14+29 Elev. 103.83  
 B.M. No. 4 S.W. 1/4 30' Elev. Left of Sta. 24+00 Elev. 95.35

Series No. 418  
 Sheet 4 of 4