

WOODEN GUARD RAIL REQUIRED

| ON LEFT | | |
|----------|---------|---------------|
| Sta. | To Sta. | Length 24 Ft. |
| 0+12 | 0+12 | 00 |
| 2+48 | 2+48 | 24 |
| 4+02 | 13+00 | 898 |
| ON RIGHT | | |
| Sta. | To Sta. | Length 24 Ft. |
| 0+12 | 0+12 | 00 |
| 2+48 | 2+48 | 24 |
| 4+02 | 4+26 | 24 |
| 7+38 | 7+62 | 24 |
| 9+88 | 10+12 | 24 |

TOTAL THIS SHEET 1154 Ft.

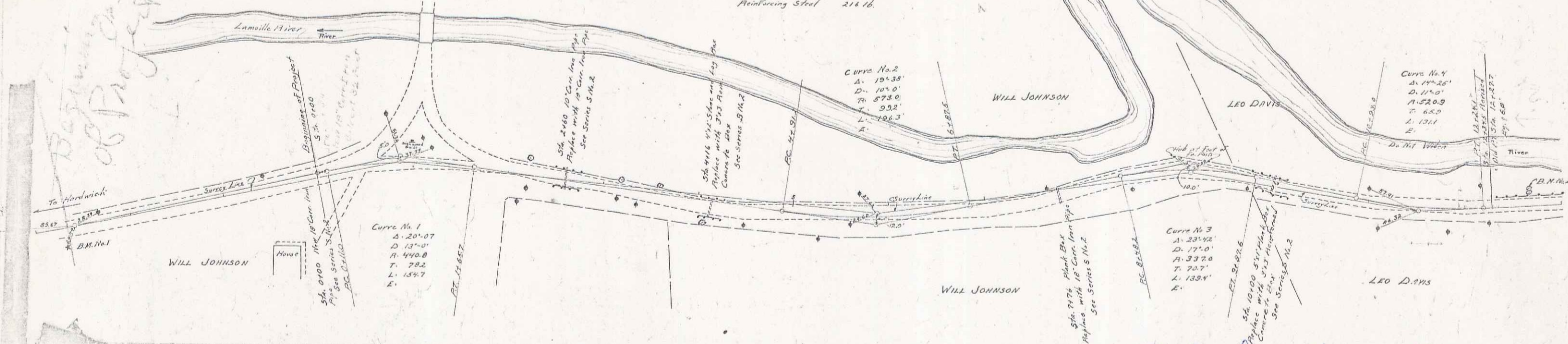
SUB-BASE REQUIRED

| Sta. | To Sta. | Length 1306.8 Ft. Ex-60' |
|------|---------|--------------------------|
| 0+00 | 13+00 | 1306.8 |

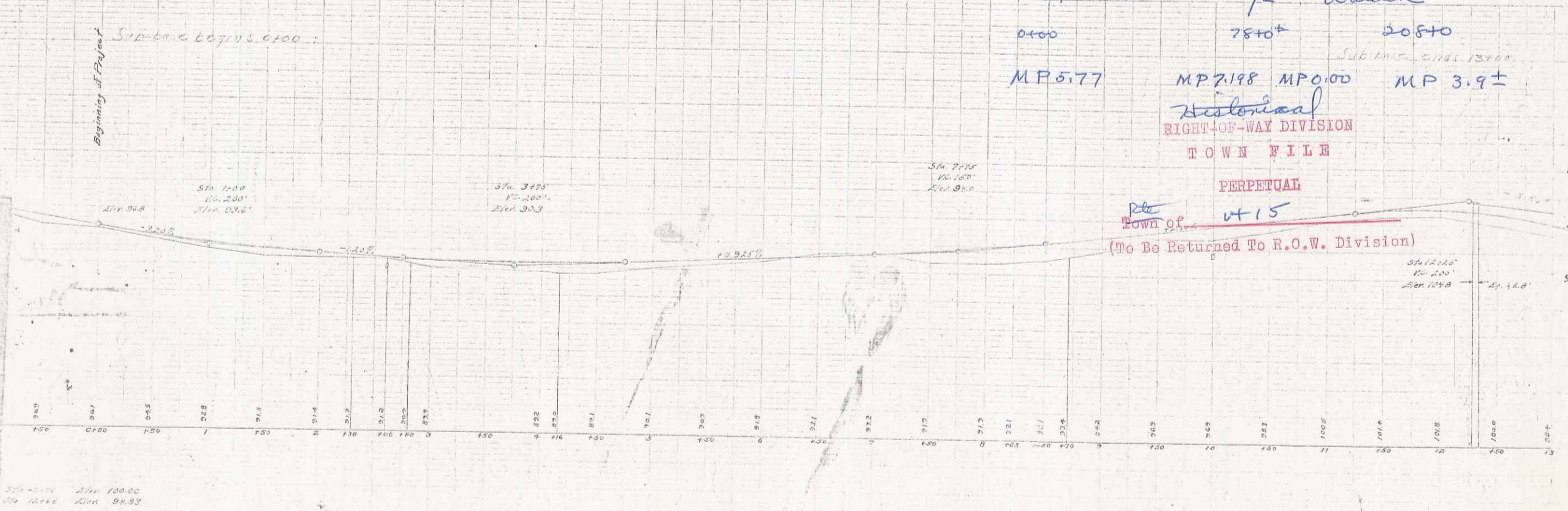
NEW CULVERTS REQUIRED

| Sta. | Length | Material |
|-------|-----------|--|
| 0+00 | 32 Ft. | 18" Cor. Iron Pipe 1-2 1/2" Concrete |
| 2+60 | 30 Ft. | 18" Cor. Iron Pipe 1-2 1/2" Concrete |
| 4+16 | 3.8 cu yd | 3 1/2" Reinforced Concrete Box 1-2 1/2" Concrete Reinforcing Steel |
| 7+76 | 38 Ft. | 18" Cor. Iron Pipe 1-2 1/2" Concrete |
| 10+00 | 4.2 cu yd | 3 1/2" Reinforced Concrete Box 1-2 1/2" Concrete Reinforcing Steel |

| | |
|---------|-----------|
| DATE | 11-1-20 |
| BY | W. J. ... |
| CHECKED | ... |
| DATE | ... |



| | |
|---------|-----------|
| DATE | 11-1-20 |
| BY | W. J. ... |
| CHECKED | ... |
| DATE | ... |



Handwick T/W Walden
 0+00 78+0 105+0
 MP 3.77 MP 2.98 MP 0.00 MP 3.9±
 Historical
 RIGHT-OF-WAY DIVISION
 TOWN FILE
 PERPETUAL
 Town of VT 15
 (To Be Returned To R.O.W. Division)