

- "INDEX OF SHEETS"**
- 1 TYPICAL SECTIONS
  - 2-7 LAYOUTS
  - 8-10 STANDARD STRUCTURES
  - 11-20 CROSS-SECTIONS

**WOOD GUARD RAIL REQUIRED**

CULVERT STATION	LEFT	RIGHT
199+7.0	24'	24'
202+50	24'	24'
209+6.8	-	24'

**CABLE GUARD RAIL REQUIRED**

STATION TO STATION	LEFT	RIGHT
209+06 - 209+86	80'	-

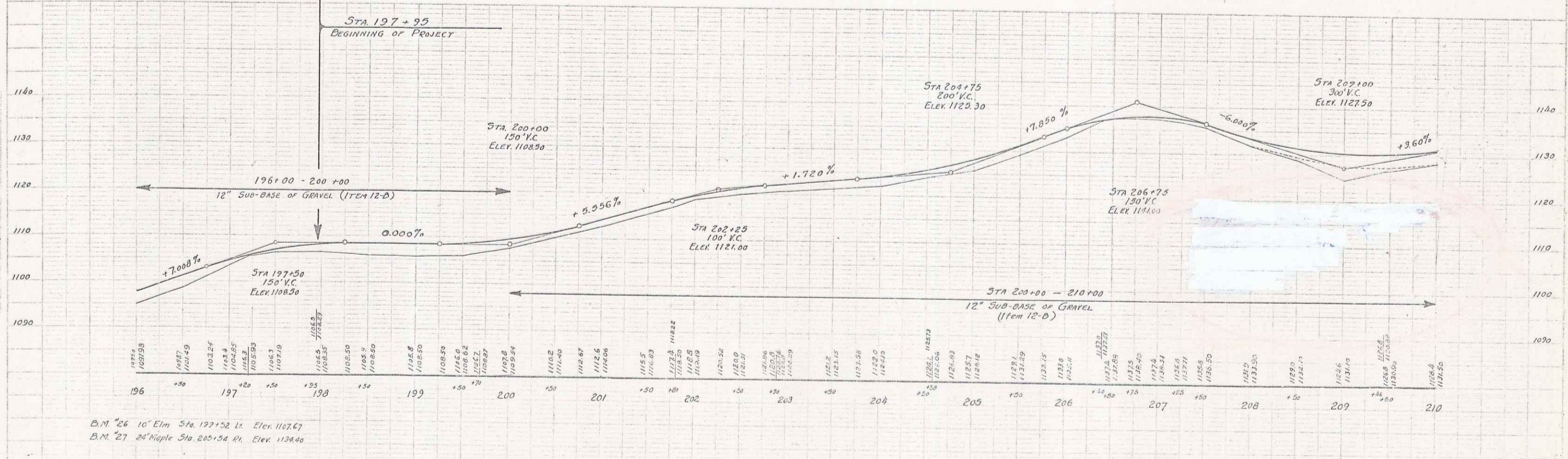
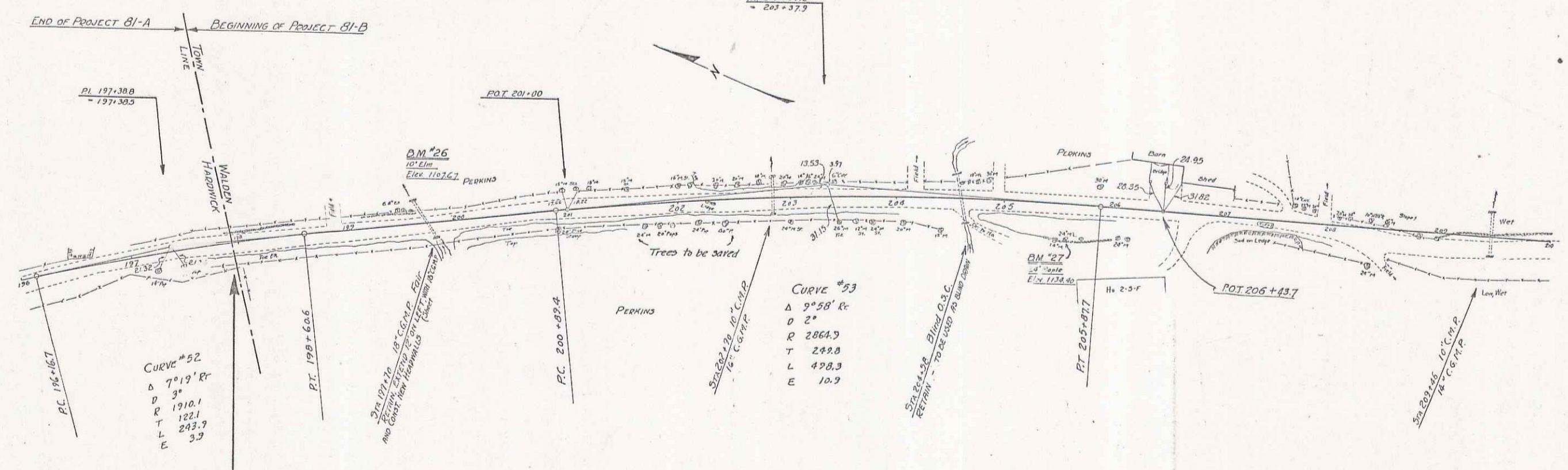
**NEW CORR GALV METAL PIPE CULVERTS PROVIDED**

STATION	SIZE	LENGTH	CEMENT EXPOSED MASONRY
202+90	16"	32'	2.7 cu yds
203+46	14"	40'	2.5 cu yds

**CULVERT REPAIRS REQUIRED**

STATION	NATURE OF REPAIRS	C.G.M.P.	CEMENT EXPOSED MASONRY
199+70	Extend 12' Lz + Const. new headwalls	18"	3.3 cu yds

PROJECT NO.	81-B
DATE	1930
SHEET NO.	2
TOTAL SHEETS	20



B.M. #26 10' Elm Sta. 197+52 Ls. Elev. 1167.67  
 B.M. #27 24' Maple Sta. 205+52 Rl. Elev. 1134.40

WALDEN BI-B  
 Sheet 2 of 20

B2 25