

WOOD GUARD RAIL REQUIRED

CONVERT STATION	LEFT	RIGHT
158+43	24'	24'
161+90	-	24'
164+19	-	24'
165+00	-	24'
167+54	24'	24'
171+88	-	24'

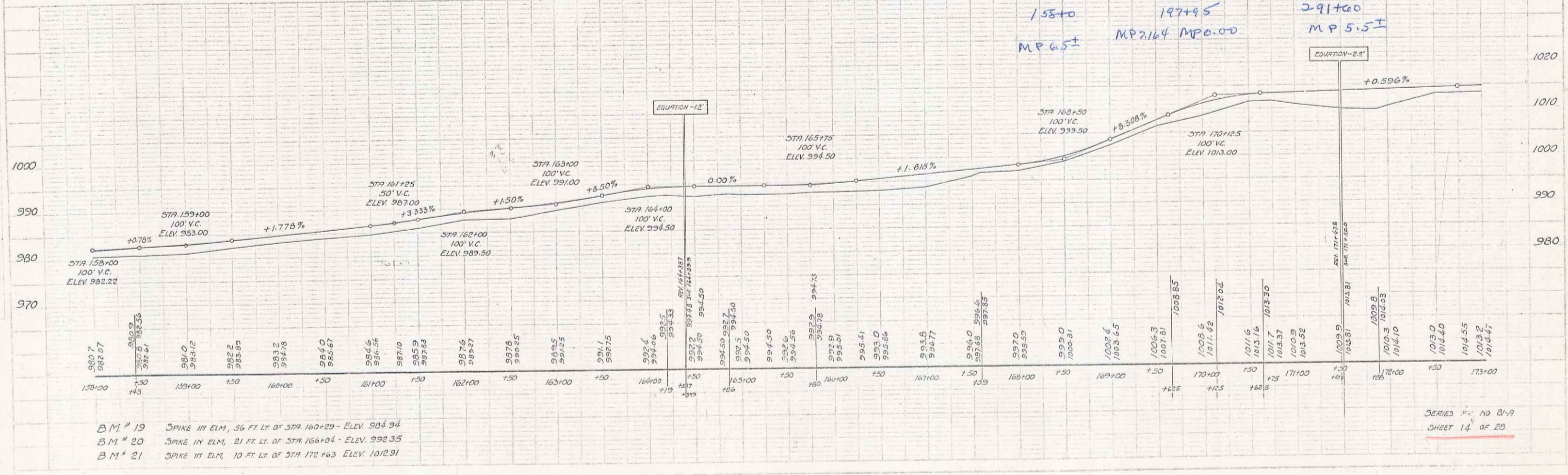
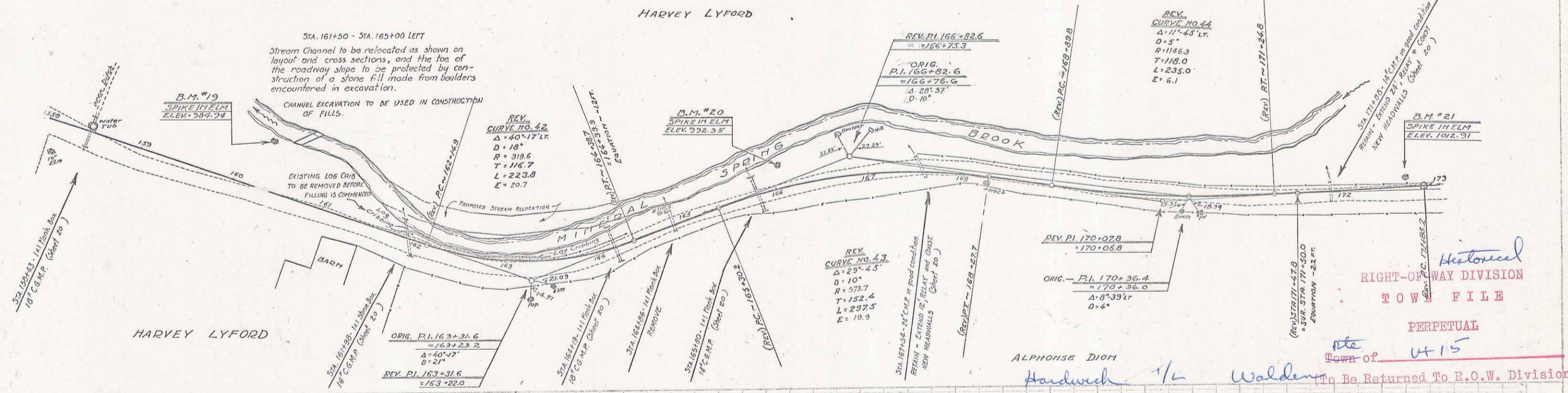
CABLE GUARD RAIL REQUIRED

STA. TO STA.	LEFT	RIGHT
161+70 - 165+94	424'	-
163+25 - 172+77	352'	-

NEW CORR GALV METAL PIPE CULVERTS REQUIRED

STATION	SIZE	LENGTH	CEMENT BRICK MASONRY
159+43	18"	32'	3.3 cu yds
161+00	16"	40'	2.7 "
164+19	18"	40'	3.3 "
165+00	16"	40'	2.5 "
167+54	24"	12'	4.0 "
171+00	14"	24'	2.5 "

STATE OF VERMONT
 ROAD DISTRICT NO. 1
 PROJECT NO. 112
 SHEET NO. 14 OF 20
 DATE: 8-1-1950



B.M. # 19 SPIKE IN ELM, 56 FT. LT. OF STA 160+29 - ELEV. 984.94
 B.M. # 20 SPIKE IN ELM, 21 FT. LT. OF STA 165+04 - ELEV. 992.35
 B.M. # 21 SPIKE IN ELM, 10 FT. LT. OF STA 172+63 - ELEV. 1012.91

SERIES NO. 87-A
 SHEET 14 OF 20