

78+00
MPS.05

118+0
MP 5.77
Historical
RIGHT-OF-WAY DIVISION
TOWN FILE
PERPETUAL
Rte. VT 15
(To Be Returned To R.O.W. Division)

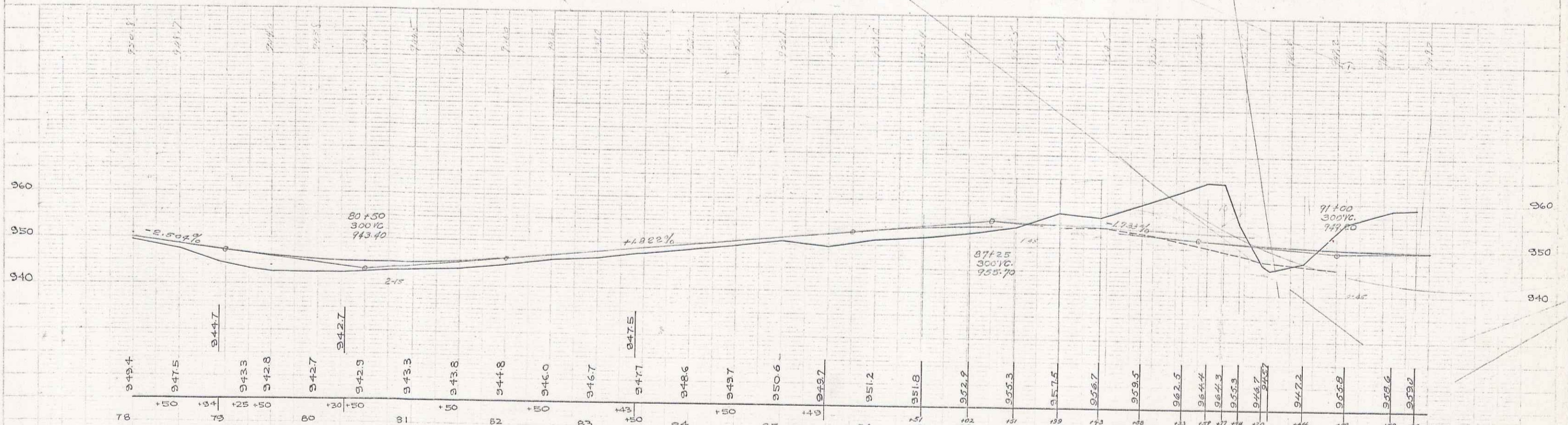
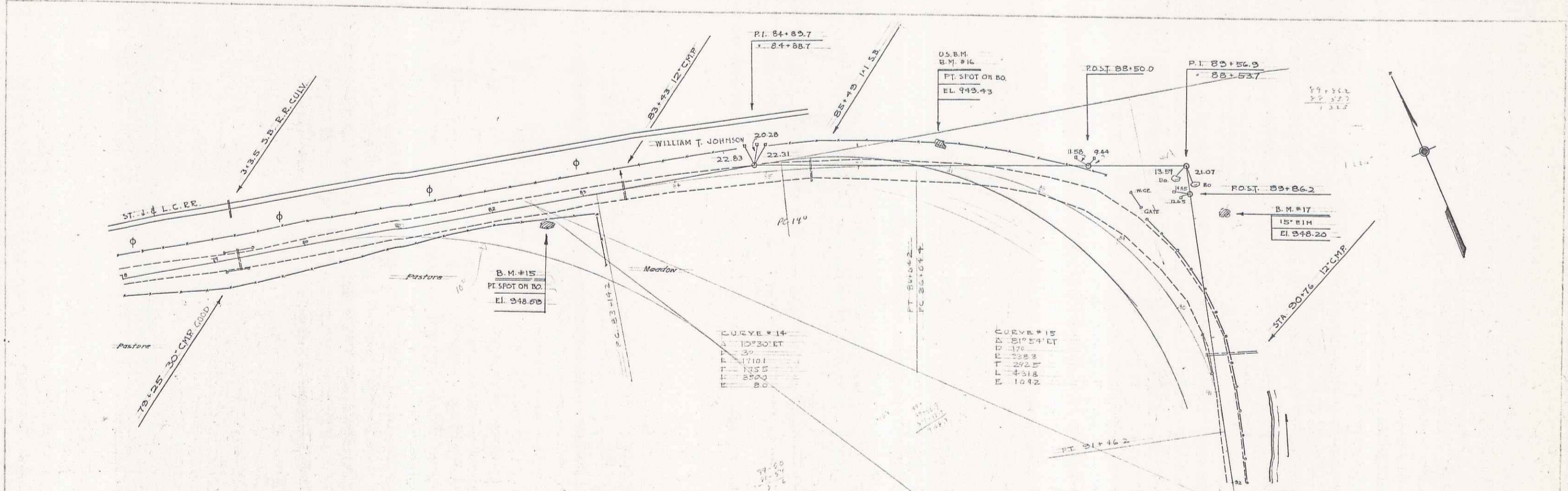
Rte. VT 15
Plan Book 268
Date: 1/11/29?
Town: HARDWICK
Project FAP 81K

ESTIMATED QUANTITIES	

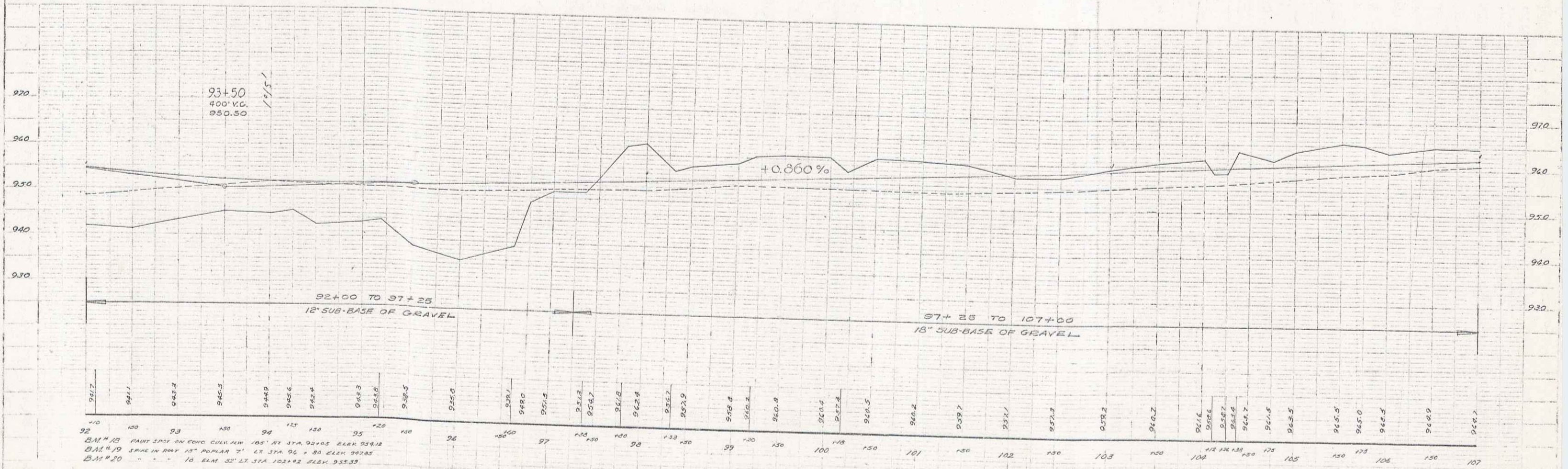
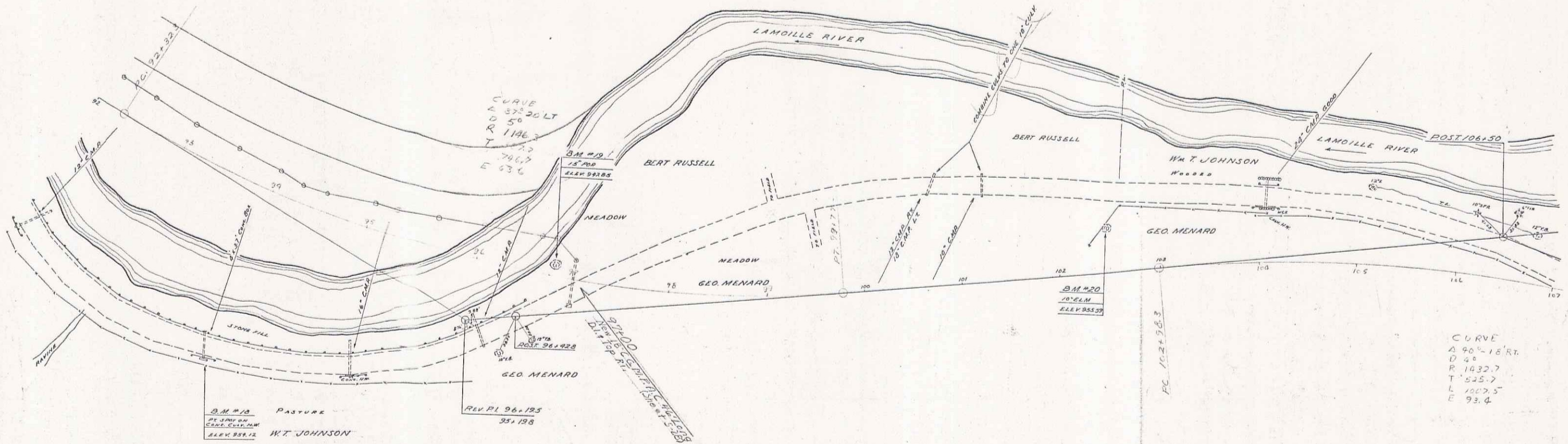
Surveyed by A.D. Wood Designed by L.M. Bjorn Drawn by L.M. Bjorn Traced by Checked by Series FAP No. 81K of 6 Sheets Sheet 1 of 6

WOOD
B. MACCHI 6/74
D. MACCHI 6/74

WOOD
B. MACCHI

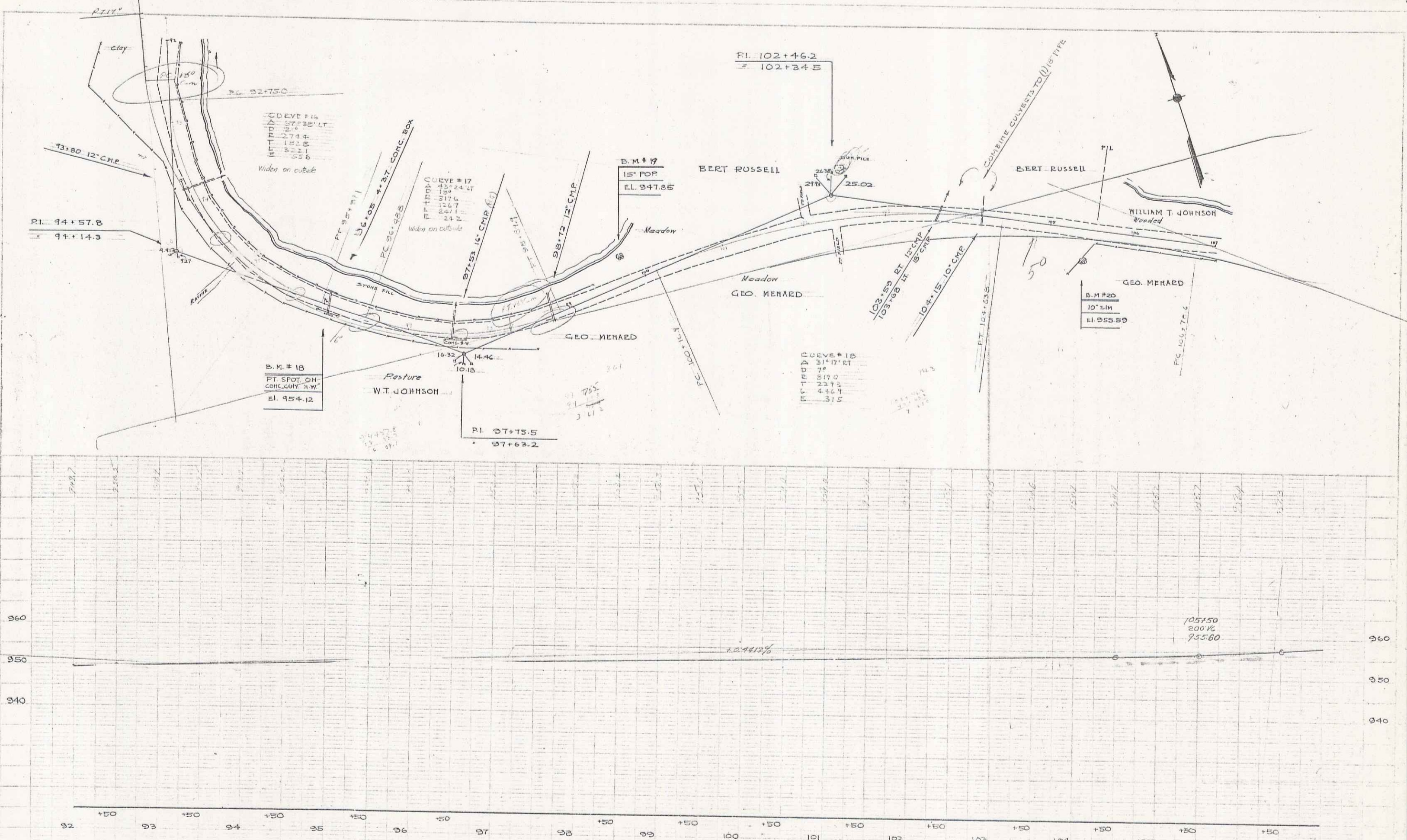


B. M. #15 PAINT SPOT ON ROULIER 15' ET STA 82+50 949.4
 B. M. #16 USBM " " 21' LT. STA 86+85 955.7
 B. M. #17 SPIKE IN ROOT 15' EIM 97' LT. STA 89+60 948.2



WOOD
BLANCHI
D. MASCHI

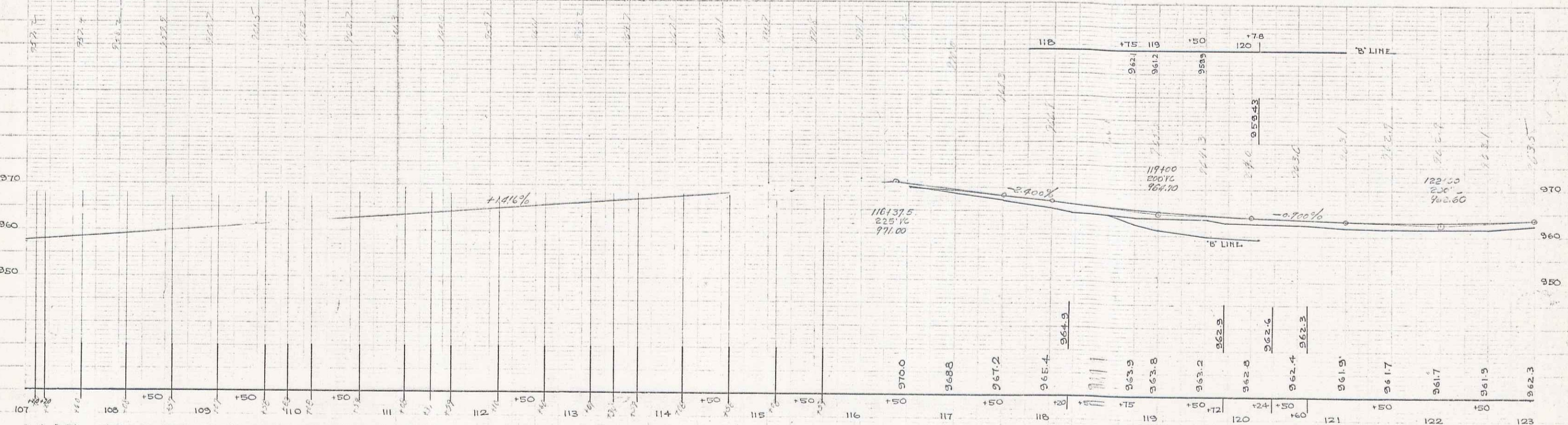
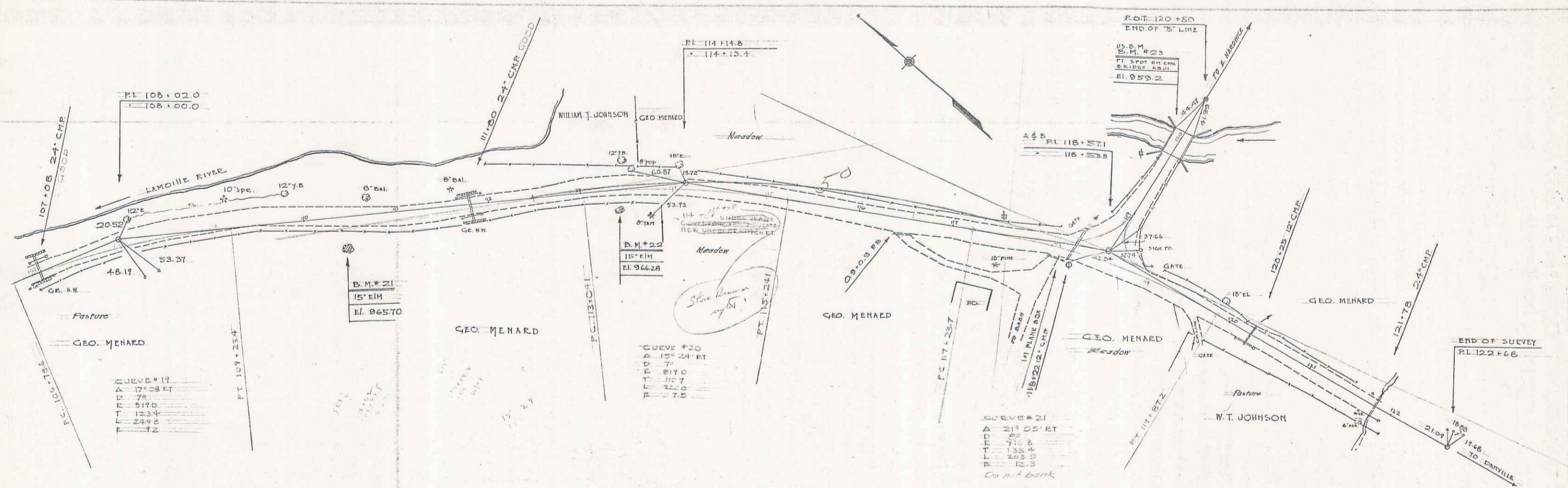
WOOD
BLANCHI
D. MASCHI



B.M. #18 PAINT SPOT ON CONC. COL. H.W. 121 FT. RT. STA. 96+07 EL. 954.12
 B.M. #19 SPIKE IN ROOT 15' POPLAR 31' LT. STA. 99+80 EL. 947.85
 B.M. #20 SPIKE IN ROOT 10' ELM 35' EL. STA. 105+42 EL. 955.59

546
5

WOOD 1932
 BY ACCCH 1/31
 D. MACCII 1/31



B.M. #21 SPIKE IN ROOT 15" EIM 30' ET STA 110+42 EI 965.70
 B.M. #22 SPIKE IN ROOT 15" EIM 15' ET STA 113+39 EI 966.28
 B.M. #23 US.B.M. PAINT SPOT ON CONC. BRIDGE ABUTMENT 125 FT LT STA 120+07 EI 959.2

6 of 6
 6