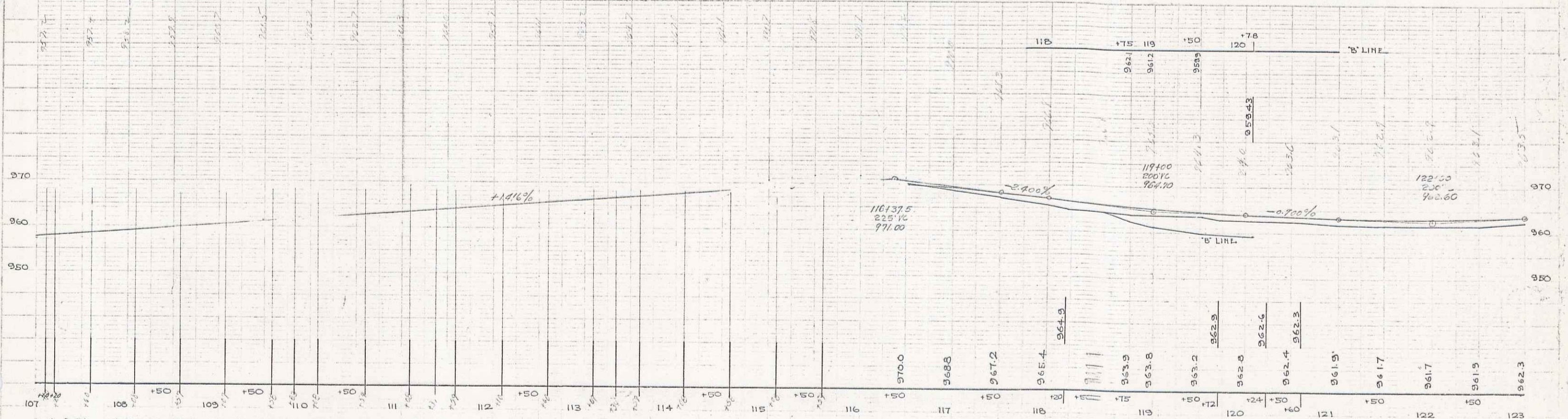
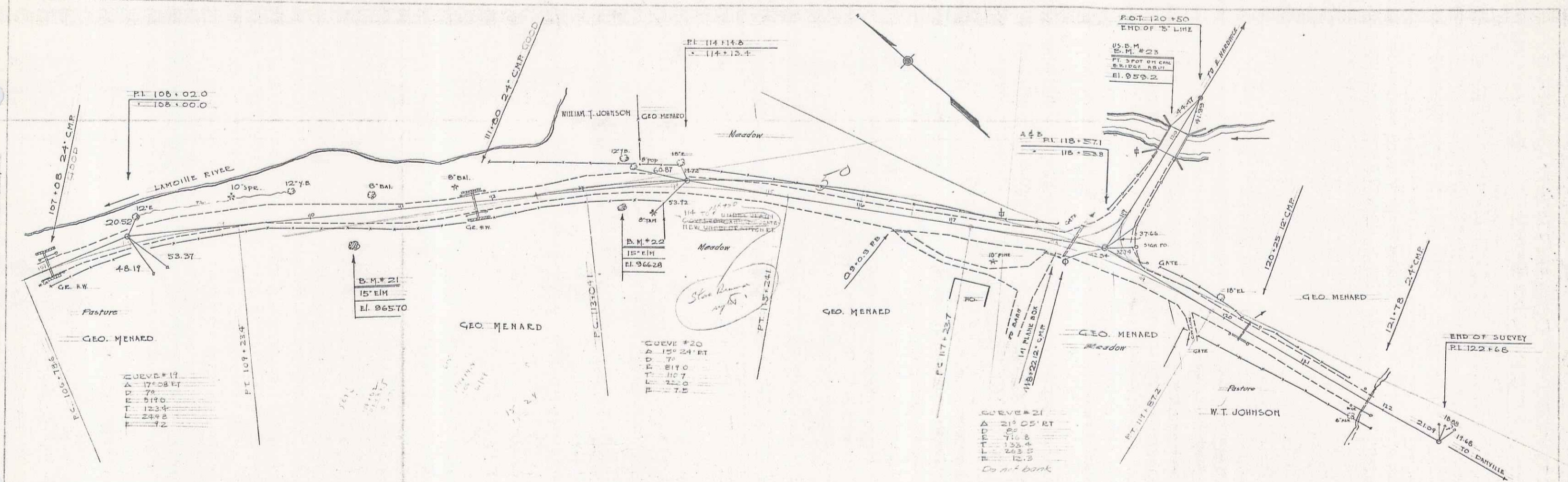


WOOD 1932
 BY ACCCH 1/31
 D. MACCII 1/31



B.M. # 21 SPIKE IN ROOT 15' EIM 30' ET STA 110+42 EI 965.70
 B.M. # 22 SPIKE IN ROOT 15' EIM 15' ET STA 113+39 EI 966.28
 B.M. # 23 US.B.M. PAINT SPOT ON CONC. BRIDGE ABUTMENT 125 FT LT STA 120+07 EI 959.2

6 of 6
 6