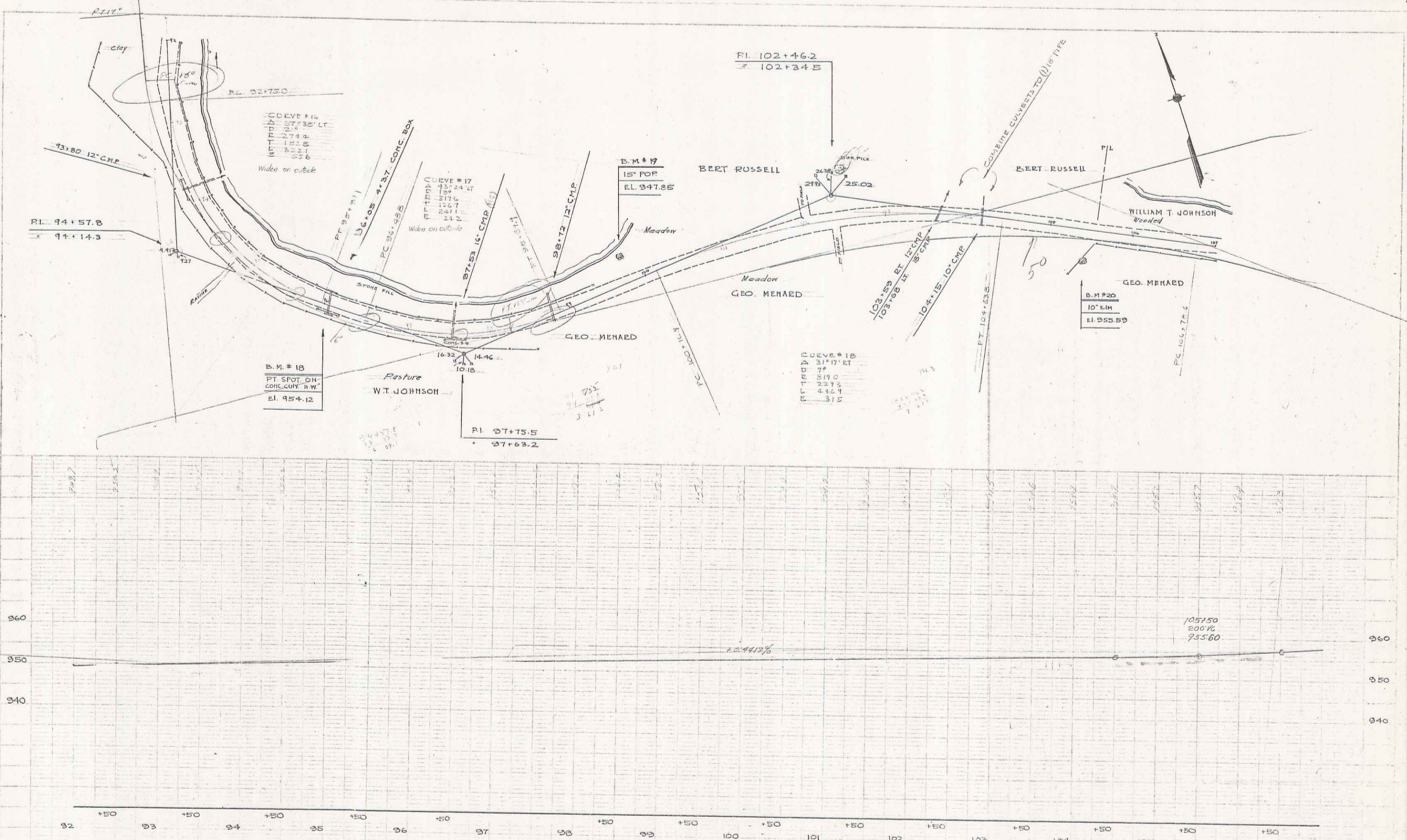


WOOD
BLANCHI
D. MASCHI

WOOD
BLANCHI
D. MASCHI



B.M. #18 PAINT SPOT ON CONC. COL. H.W. 121 FT. RT. STA. 96+07 EL. 954.12
 B.M. #19 SPIKE IN ROOT 15' POPLAR 31' LT. STA. 99+80 EL. 947.85
 B.M. #20 SPIKE IN ROOT 10' ELM 35' EL. STA. 105+42 EL. 955.59

546
5