

**NEW CULVERTS REQUIRED**

Sta. 175+00 18" Reinf. Conc. Pipe, 36 ft long  
 Conc. Class B (1-2-5) 3.1 cu. yds.  
 Reinf. Steel 33 lbs.

Sta. 177+25 18" Reinf. Conc. Pipe, 32 ft long  
 Conc. Class A (1-2-4) 0.9 cu. yds.  
 Reinf. Steel 14 lbs.

Sta. 180+72 24" Reinf. Conc. Pipe, 32 ft long  
 Conc. Class A (1-2-4) 2.6 cu. yds.  
 Reinf. Steel 34 lbs.

Sta. 182+22 18" Reinf. Conc. Pipe, 32 ft long  
 Conc. Class B (1-2-5) 3.1 cu. yds.  
 Reinf. Steel 33 lbs.

Sta. 183+75 18" Reinf. Conc. Pipe, 32 ft long  
 Conc. Class B (1-2-5) 3.1 cu. yds.  
 Reinf. Steel 33 lbs.

Sta. 184+95 4x3 Reinf. Conc. Box  
 Conc. Class A (1-2-4) 12.7 cu. yds.  
 Reinf. Steel 112 lbs.

**NEW CABLE GUARD RAIL REQUIRED**

**ON LEFT**  
 Sta. 173+00 to Sta. 177+00 Length 400 FT  
 Sta. 180+00 to Sta. 183+00 " 300 "

**TOTAL ON SHEET 700 FT.**

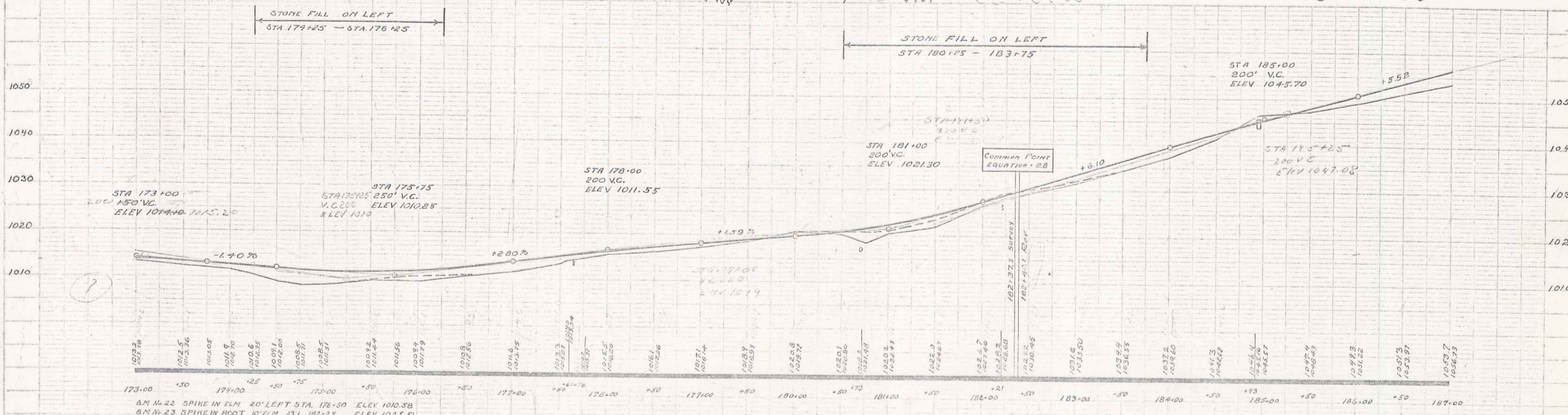
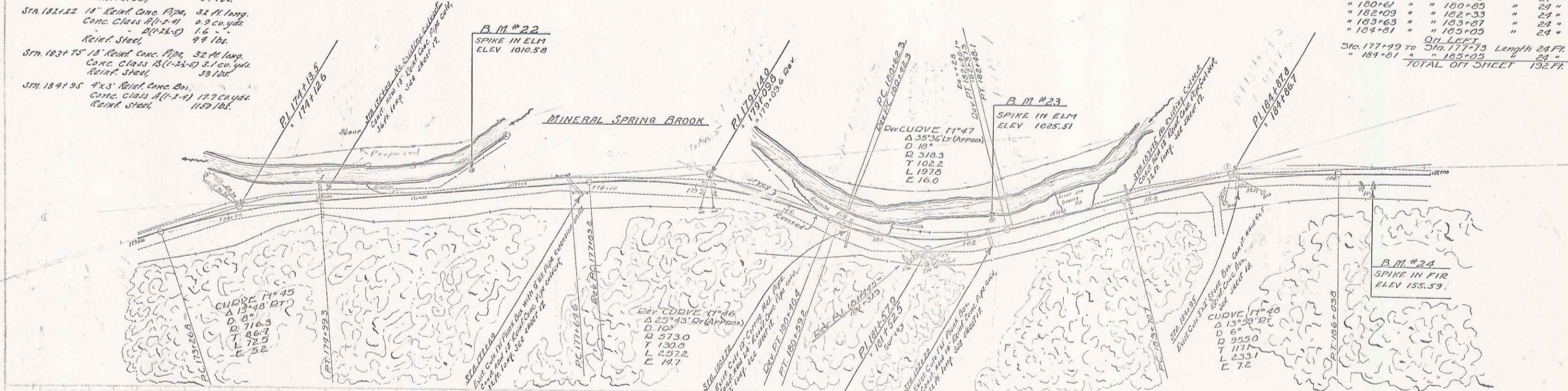
FED. ROAD DIST. NO.	STATION	DATE	DESIGNER	SCALE	SHEET NO.	TOTAL SHEETS
		APRIL 1928			15	31

**NEW WOOD GUARD RAIL REQUIRED**

**ON RIGHT**  
 Sta. 174+05 to Sta. 175+15 Length 24 FT  
 " 177+55 " " 177+75 " 24 "  
 " 180+45 " " 180+65 " 24 "  
 " 182+05 " " 182+25 " 24 "  
 " 183+65 " " 183+85 " 24 "  
 " 184+85 " " 185+05 " 24 "

**ON LEFT**  
 Sta. 177+45 to Sta. 177+75 Length 24 FT  
 " 184+85 " " 185+05 " 24 "

**TOTAL ON SHEET 132 FT.**



B.M. #22 SPIKE IN ELM 20' LEFT STA. 176+50 ELEV 1010.58  
 B.M. #23 SPIKE IN ELM 10' LEFT STA. 182+25 ELEV 1025.51  
 B.M. #24 SPIKE IN FIR 10' RIGHT STA. 186+39 ELEV 1055.59

SERIES FROM ILL  
 SHEET 15 OF 31

12